

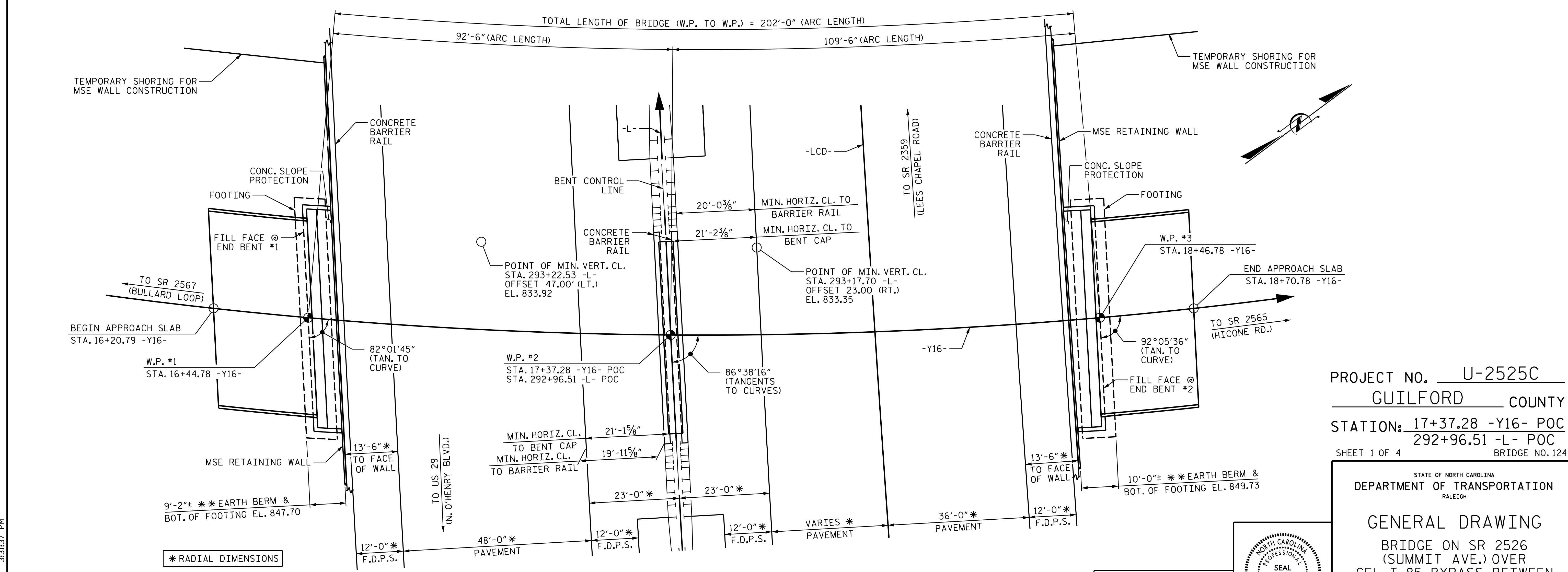
GRADE DATA -Y16-

(+)1.0039% (-)0.7926%

PI STA 19+27.00 -Y16-
EL. 862.89
VC = 140'

HORIZONTAL CURVE DATA

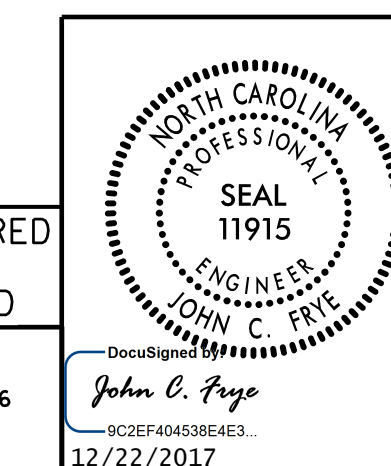
| | -L- | -LCD- | -Y16- |
|----------|---------------------|-------------------------------|-------------------------------|
| PI | STA. 288+11.64 | PI STA. 58+58.43 | PI STA. 16+65.48 |
| Δ | = 9°50' 53.9" (RT.) | Δ = 10°28' 13.4" (RT.) | Δ = 23°02' 41.3" (LT.) |
| D | = 0°34' 22.6" | D = 0°39' 17.3" | D = 4°58' 56.1" |
| L | = 1,718.85' | L = 1,599.00' | L = 462.54' |
| T | = 861.55' | T = 801.73' | T = 234.44' |
| R | = 10,000.00' | R = 8,750.00' | R = 1,150.00' |



PROJECT NO. U-2525C
GUILFORD COUNTY
 STATION: 17+37.28 -Y16- POC
292+96.51 -L- POC
 SHEET 1 OF 4 BRIDGE NO. 1240

STATE OF NORTH CAROLINA
 DEPARTMENT OF TRANSPORTATION
 RALEIGH

GENERAL DRAWING
 BRIDGE ON SR 2526
 (SUMMIT AVE.) OVER
 GEL I-85 BYPASS BETWEEN
 SR 2567 AND SR 2565



DOCUMENT NOT CONSIDERED FINAL UNLESS ALL SIGNATURES COMPLETED

PLANS PREPARED BY:
M MOTT MACDONALD
 PO Box 700
 Fuquay-Varina, NC 27526
 (919) 552-2253
 www.mottmac.com
 LICENSE NO. F-0669

| REVISIONS | | | | SHEET NO. | |
|-----------|-----|-------|-----|-----------|-------|
| NO. | BY: | DATE: | NO. | BY: | DATE: |
| 1 | | | 3 | | |
| 2 | | | 4 | | |

SHEET NO. S1-1
 TOTAL SHEETS 29

11/27/2017 11:27:07 AM C:\Users\jwilliams\OneDrive\Documents\Projects\U-2525C-SML\CDL-401240.dgn
 12/21/2017 11:27:07 AM C:\Users\jwilliams\OneDrive\Documents\Projects\U-2525C-SML\CDL-401240.dgn

DRAWN BY: J. T. WILLIAMS DATE: 8-2016
 CHECKED BY: J. E. MONDOLFI DATE: 8-2017
 DESIGN ENGINEER OF RECORD: J. C. FRYE DATE: 11-2017

BENT FOUNDATION NOT SHOWN FOR CLARITY
 ** EARTH BERM WIDTH IS DEPENDENT ON FINAL RETAINING WALL DESIGN.