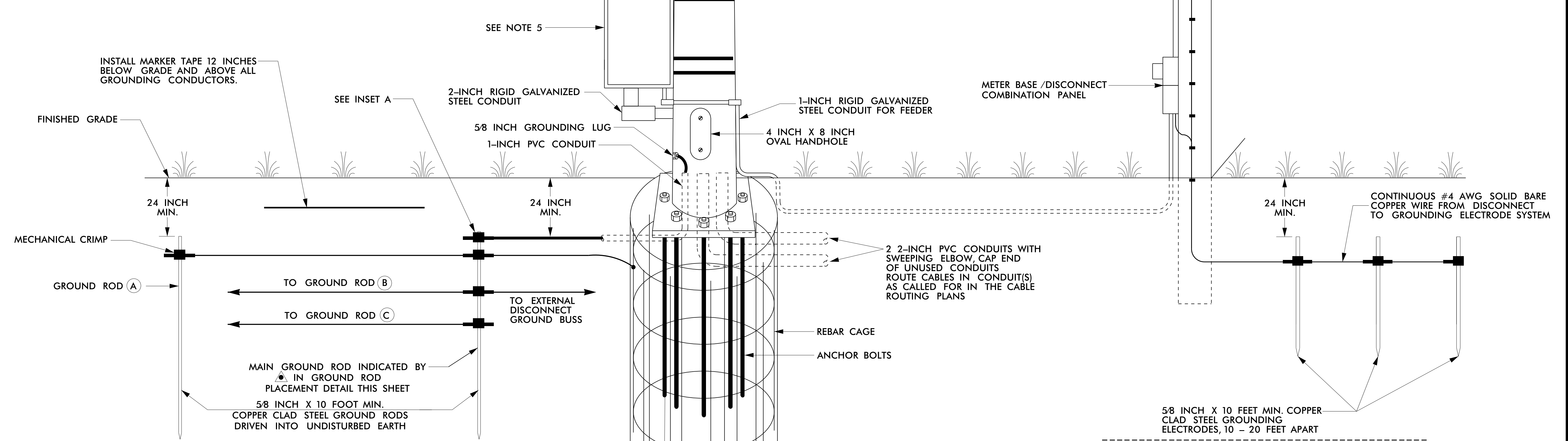
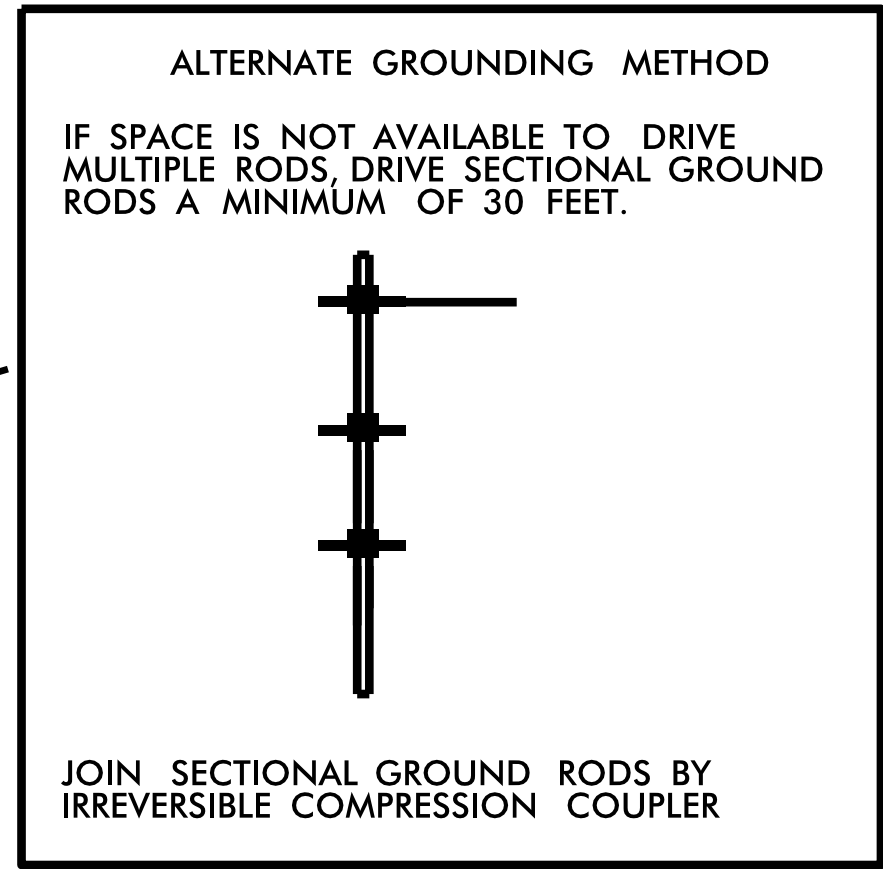


- NOTES**
1. BOND 0.5 INCH DIAMETER, 28 STRAND (MINIMUM) CLASS II COPPER CONDUCTOR TO THE MAIN GROUND ROD BY A MECHANICAL CRIMP USING AN IRREVERSIBLE COMPRESSION TOOL.
 2. MECHANICALLY CRIMP ALL CONNECTIONS TO GROUND RODS USING AN IRREVERSIBLE COMPRESSION TOOL.
 3. BOND #4 AWG SOLID BARE COPPER WIRE TO REBAR CAGE AND THE MAIN GROUND ROD BY A MECHANICAL CRIMP USING AN IRREVERSIBLE COMPRESSION TOOL.
 4. ENSURE CAMERA HOUSING, CAMERA, AND PAN-TILT UNIT ARE BONDED TO POLE.
 5. REMOVE BONDING JUMPER BETWEEN EQUIPMENT CABINET GROUND BUSS AND NEUTRAL BUSS.
 6. THE CONTRACTOR MAY, UPON APPROVAL OF THE ENGINEER, INSTALL A 30-FOOT SECTIONAL GROUND ROD WHEN CONDITIONS WILL NOT ALLOW FOR THE INSTALLATION OF THE 3 - RADIALGROUND RODS.
 7. INSTALL MARKER TAPE DIRECTLY ABOVE ALL GROUNDING ELECTRODES AND CONDUCTORS AT A DEPTH OF 12 INCHES.



	<p>Prepared in the Offices of:</p> <p>CCTV CAMERA WITH CABINET ON METAL POLE WITH AERIAL ELECTRICAL SERVICE TYPICAL DETAIL</p>		<p>SEAL</p> <p>NORTH CAROLINA PROFESSIONAL ENGINEER</p> <p>SEAL 031636</p> <p>PAUL P. MARAK</p> <p>11/14/2017</p> <p>SIGNATURE DATE</p>					
	<p>DIVISION 07 GUILFORD CO. GREENSBORO</p> <p>PLAN DATE: NOVEMBER 2017 REVIEWED BY: P.P. MARAK, PE</p> <p>PREPARED BY: G.A. GREEN REVIEWED BY: M.A. ASLAMI, PE</p>	<p>SCALE</p> <p>0</p> <p>N/A</p>		<table border="1"> <tr> <th>REVISIONS</th> <th>INIT.</th> <th>DATE</th> </tr> <tr> <td> </td> <td> </td> <td> </td> </tr> </table>	REVISIONS	INIT.	DATE	
REVISIONS	INIT.	DATE						

CADD Filename: