

OVERLAP PROGRAMMING DETAIL FOR OVERLAPS A AND C*

(program controller as shown below)

*NOTE FOR ALL OVERLAPS: Use Default values for Overlap 'PLUS' programming details.

FROM MAIN MENU PRESS "1" CONTROLLER AND THEN "5" OVERLAPS

```

Overlaps
1.General Parm
2.Program
3.Status
    
```

```

Enter Overlap # 1
then press Enter
    
```

```

Overlap A-1
1.Program Parm
2.Confl Prog+
3.Program Parm+
    
```

```

OvrIp A-1 Ps.....
Included Ps 2 0 0 0 0 0 0 0
Modifier Ps 0 0 0 0 0 0 0 0
Type:NORMAL Grn: 0 Yel: 3.5 Red: 1.5
    
```

PRESS "ESC" TWICE

```

Enter Overlap # 3
then press Enter
    
```

```

Overlap C-3
1.Program Parm
2.Confl Prog+
3.Program Parm+
    
```

```

OvrIp C-3 Ps.....
Included Ps 5 0 0 0 0 0 0 0
Modifier Ps 6 0 0 0 0 0 0 0
Type:FYA-4 Grn: 0 Yel: 3.5 Red: 1.5
    
```

PRESS "ESC" THREE TIMES

Notice type FYA-4 →

```

Overlaps
1.General Parm
2.Program
3.Status
    
```

```

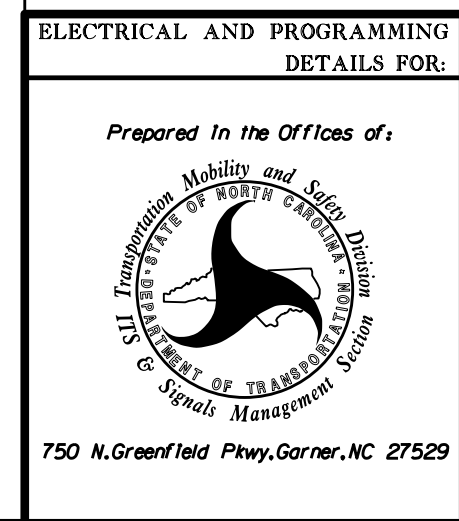
General Overlap Parameters
Lock Inhibit OFF
Confl Lock Enable OFF
Parent P Cirnc ON
Extra Included Phases OFF
InhibitLockInterval ALWAYS
    
```

OVERLAP PROGRAMMING COMPLETE

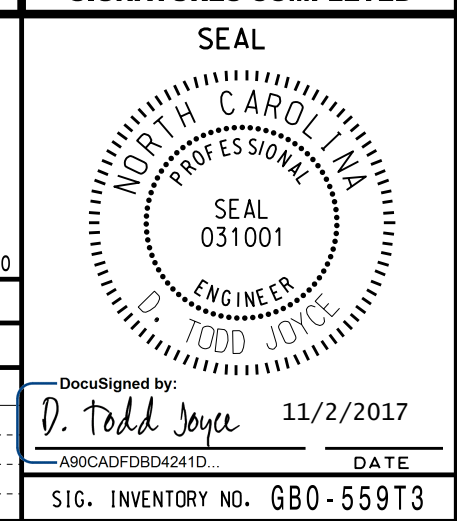
THIS ELECTRICAL DETAIL IS FOR THE SIGNAL DESIGN: GBO-559T3
 DESIGNED: October 2017
 SEALED: 10/31/2017
 REVISED:

Electrical Detail - Temp 3 - Sheet 2 of 3

DOCUMENT NOT CONSIDERED FINAL UNLESS ALL SIGNATURES COMPLETED



Electrical AND PROGRAMMING DETAILS FOR:
N. Elm Street at United Health Care and Lake Jeanette Office Park
 Division 7 Guilford County Greensboro
 PLAN DATE: October 2017 REVIEWED BY: T. Joyce
 PREPARED BY: C. Strickland REVIEWED BY:
 REVISIONS INIT. DATE
 DocuSigned by: *D. Todd Joyce* 11/2/2017
 AR0CADFD804241D DATE
 SIG. INVENTORY NO. GBO-559T3



G:\09-2017_09-29
 C:\NTS\SIG\IS\Sig\06\work\hous\Sig_Maps\FY17\ck\and\gbo-559_sim\el_xxx.dgn
 cbsr:ckland