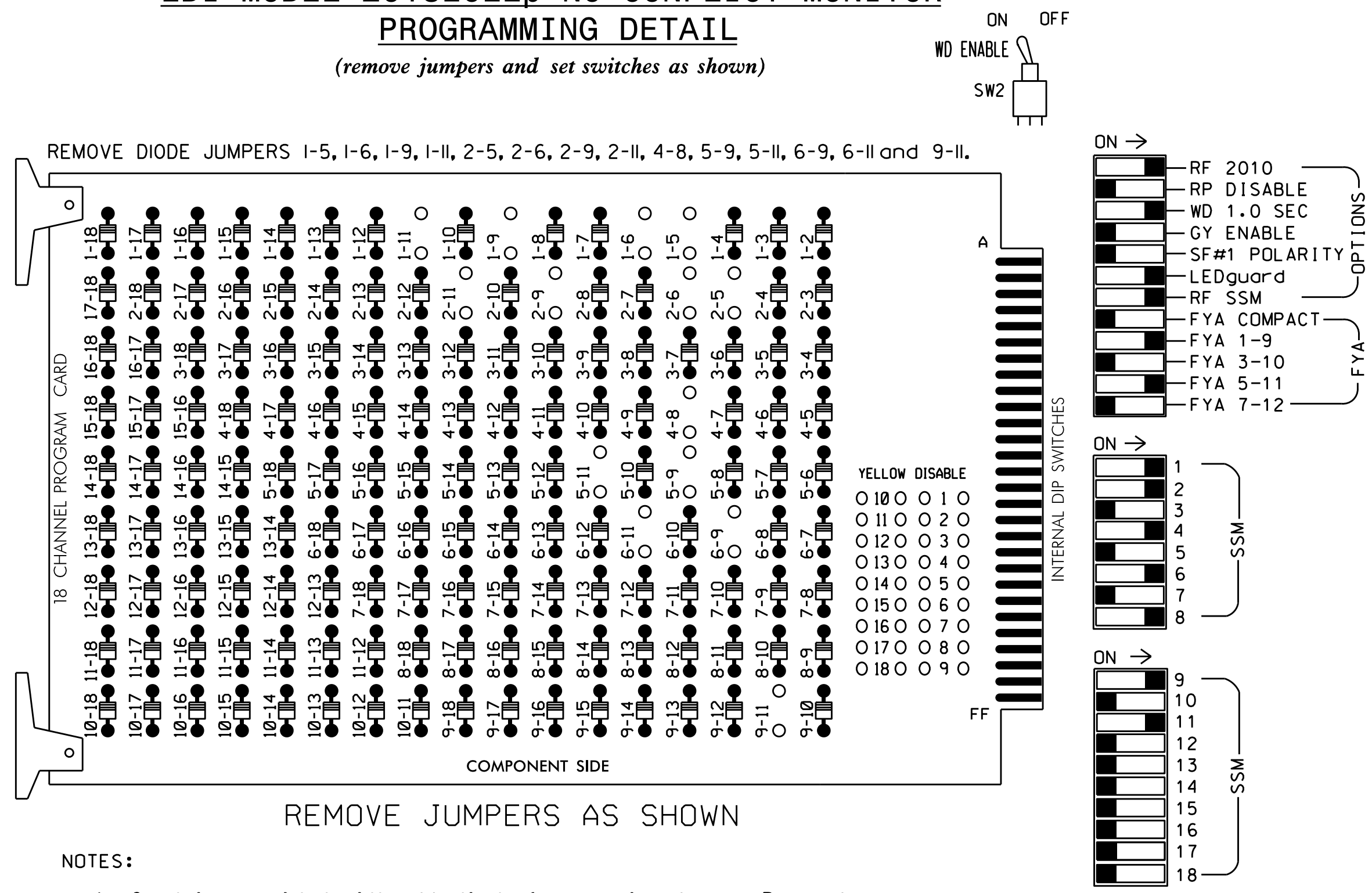


EDI MODEL 2018EClip-NC CONFLICT MONITOR

PROGRAMMING DETAIL

(remove jumpers and set switches as shown)



NOTES:

- Card is provided with all diode jumpers in place. Removal of any jumper allows its channels to run concurrently.
- Ensure jumpers SEL2-SEL5 and SEL9 are present on the monitor board.
- Ensure that Red Enable is active at all times during normal operation.
- Ensure Conflict Monitor Ethernet port is connected to a Switch port located within the cabinet.

■ = DENOTES POSITION OF SWITCH

NOTES

- To prevent "flash-conflict" problems, insert red flash program blocks for all unused vehicle load switches in the output file. The installer shall verify that signal heads flash in accordance with the Signal Plans.
- Initialize database in Naztec 2070 local software (Apogee) as FULL-CALTRANS. This initialization should be done prior to programming controller.
- Initialize I/O "C1-C11-ABC IO Mode" to USER (MM 1-8-6). Then set "Init 2A" to MODE 5 (MM 1-8-9-3).
- Program phases 2 and 6 for Start Up In Green.
- Program "Start Up Flash" for 0 sec. The conflict monitor will govern start-up flash time.
- Ensure "Local Flash Start" feature is set to "DRK".
- Program controller to provide a 1 second delay on the Flash Sense/Local Flash input. Use the following logic statement to provide this functionality:

```
FROM MAIN MENU->1->8->7 (I/O LOGIC) Result Src.Fcn TimeOp Time
1208 = 01208 DLY 1
```
- Program phases 4 and 8 for Dual Entry.
- The cabinet and controller are part of the City of Greensboro Signal System.

EQUIPMENT INFORMATION

CONTROLLER.....2070
 CABINET.....332 W/ AUX
 SOFTWARE.....NAZTEC APOGEE
 CABINET MOUNT.....BASE
 OUTPUT FILE POSITIONS...18 (12-STD, 6-AUX)
 LOAD SWITCHES USED.....S1,S2,S5,S7,S8,S11,AUX S1, AUX S4
 PHASES USED.....1,2,4,5,6,8
 OVERLAP A.....*
 OVERLAP B.....NOT USED
 OVERLAP C.....*
 OVERLAP D.....NOT USED
 * See Overlap Programming Detail Sheet 2.

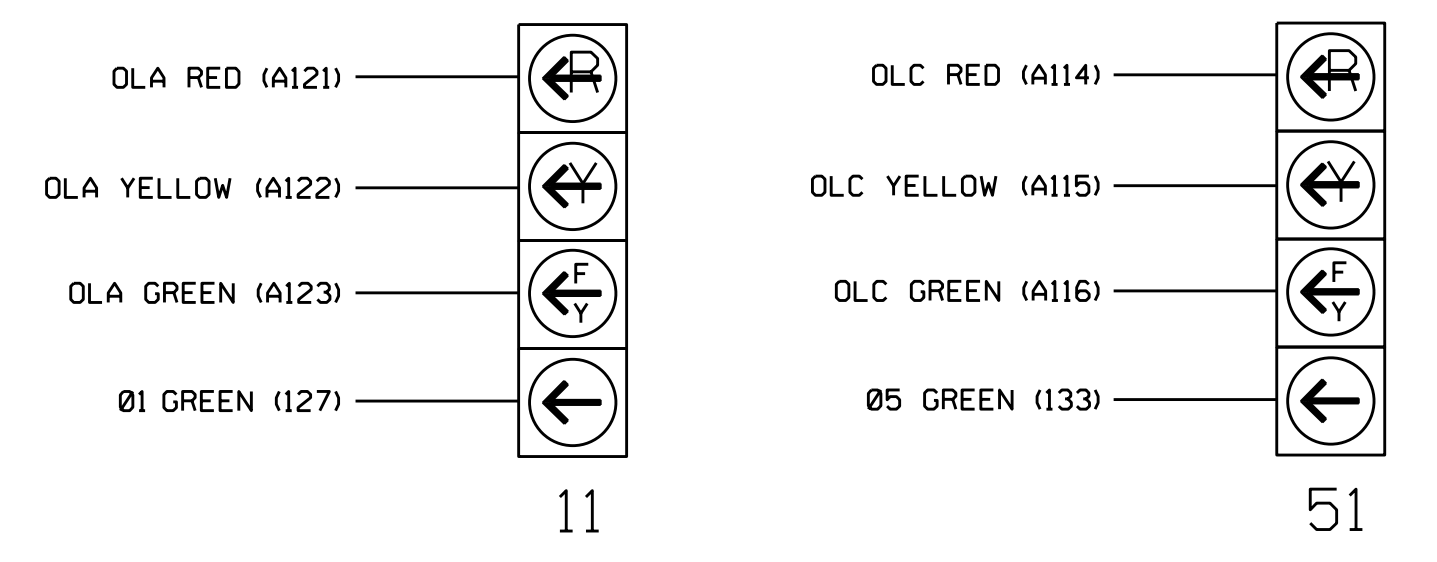
SIGNAL HEAD HOOK-UP CHART

LOAD SWITCH NO.	S1	S2	S3	S4	S5	S6	S7	S8	S9	S10	S11	S12	AUX S1	AUX S2	AUX S3	AUX S4	AUX S5	AUX S6
CMU CHANNEL NO.	1	2	13	3	4	14	5	6	15	7	8	16	9	10	17	11	12	18
PHASE	1	2	2 PED	3	4	4 PED	5	6	6 PED	7	8	8 PED	OLA	OLB	SPARE	OLC	OLD	SPARE
SIGNAL HEAD NO.	11*	82	21,22	NU	NU	41,42	NU	51*	61,62	NU	NU	81,82	NU	11*	NU	NU	51*	NU
RED		*	128			101			134			107						
YELLOW			129			102		*	135			108						
GREEN			130			103			136			109						
RED ARROW													A121				A114	
YELLOW ARROW			126										A122				A115	
FLASHING YELLOW ARROW													A123				A116	
GREEN ARROW	127	127							133									

NU = Not Used
 * Denotes install load resistor. See load resistor installation detail this sheet.
 * See pictorial of head wiring in detail below.

4 SECTION FYA PPLT SIGNAL WIRING DETAIL

(wire signal heads as shown)



INPUT FILE POSITION LAYOUT

(front view)

FILE	U	1	2	3	4	5	6	7	8	9	10	11	12	13	14
U	∅ 1	∅ 1	∅ 2	∅ 3	∅ 4	∅ 5	∅ 6	∅ 7	∅ 8	∅ 9	∅ 10	∅ 11	∅ 12	∅ 13	FS
L	1A	1B	2A	3A	4A	5A	6A	7A	8A	9A	10A	11A	12A	13A	DC ISOLATOR
U	NOT USED	∅ 1	NOT USED	∅ 3	∅ 4	∅ 5	∅ 6	∅ 7	∅ 8	∅ 9	∅ 10	∅ 11	∅ 12	∅ 13	ST
L	1C	1C	2C	3C	4C	5C	6C	7C	8C	9C	10C	11C	12C	13C	DC ISOLATOR

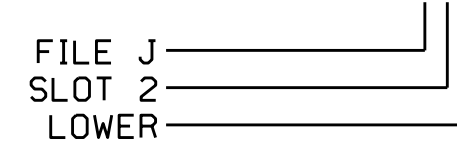
EX.: 1A, 2A, ETC. = LOOP NO.'S

FS = FLASH SENSE
 ST = STOP TIME

INPUT FILE CONNECTION & PROGRAMMING CHART

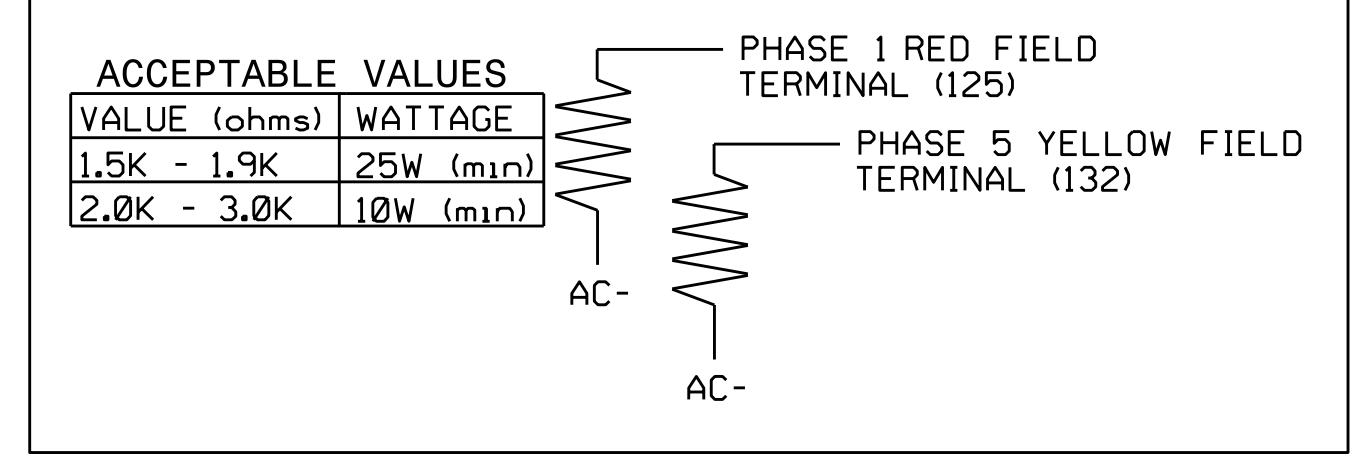
LOOP NO.	LOOP TERMINAL	INPUT FILE POS.	PIN NO.	DETECTOR NO.	CALL PHASE	SWITCH	DELAY TIME	EXTEND TIME	CALL	EXTEND	ADDED INIT.
1A	TB2-1,2	11U	56	1	1		15		X	X	
1B	TB2-5,6	12U	39	2	1		15		X	X	
1C	TB2-7,8	12L	43	3	1		15		X	X	
2A	TB2-9,10	13U	63	4	2				X	X	X
4A	TB4-9,10	16U	41	8	4				X	X	
4B	TB4-11,12	16L	45	9	4				X	X	
5A	TB3-1,2	J1U	55	15	5		15		X	X	
6A	TB3-5,6	J2U	40	16	6				X	X	X
8A	TB5-9,10	J6U	42	22	8				X	X	

INPUT FILE POSITION LEGEND: J2L



LOAD RESISTOR INSTALLATION DETAIL

(install resistors as shown below)



Electrical Detail - Sheet 1 of 3

THIS ELECTRICAL DETAIL IS FOR THE SIGNAL DESIGN: 07-1723
 DESIGNED: September 2017
 SEALED: 10/24/2017
 REVISED:

Electrical AND PROGRAMMING DETAILS FOR: SR 2523 (Yanceyville Street) at I-840 WB Ramps and Peach Orchard Drive

Division 7 Guilford County Greensboro

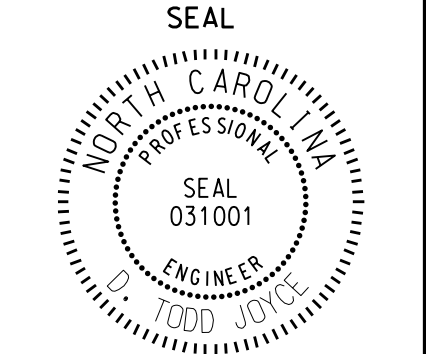
PLAN DATE: October 2017 REVIEWED BY: T. Joyce

PREPARED BY: C. Strickland REVIEWED BY:

REVISIONS: _____ INIT. DATE

750 N. Greenfield Pkwy, Garner, NC 27529

DOCUMENT NOT CONSIDERED FINAL UNLESS ALL SIGNATURES COMPLETED



DocuSigned by: D. Todd Joyce 10/30/2017
 SIG. INVENTORY NO. 07-1723

27-001-2017 11:16
 S:\IT\ASIS\115_Signal\work\hgr\oups\g_Maps\Trick\lancho\1123_sml_e_xxx.dgn
 C:\Users\TJ\Documents\Signal Management System