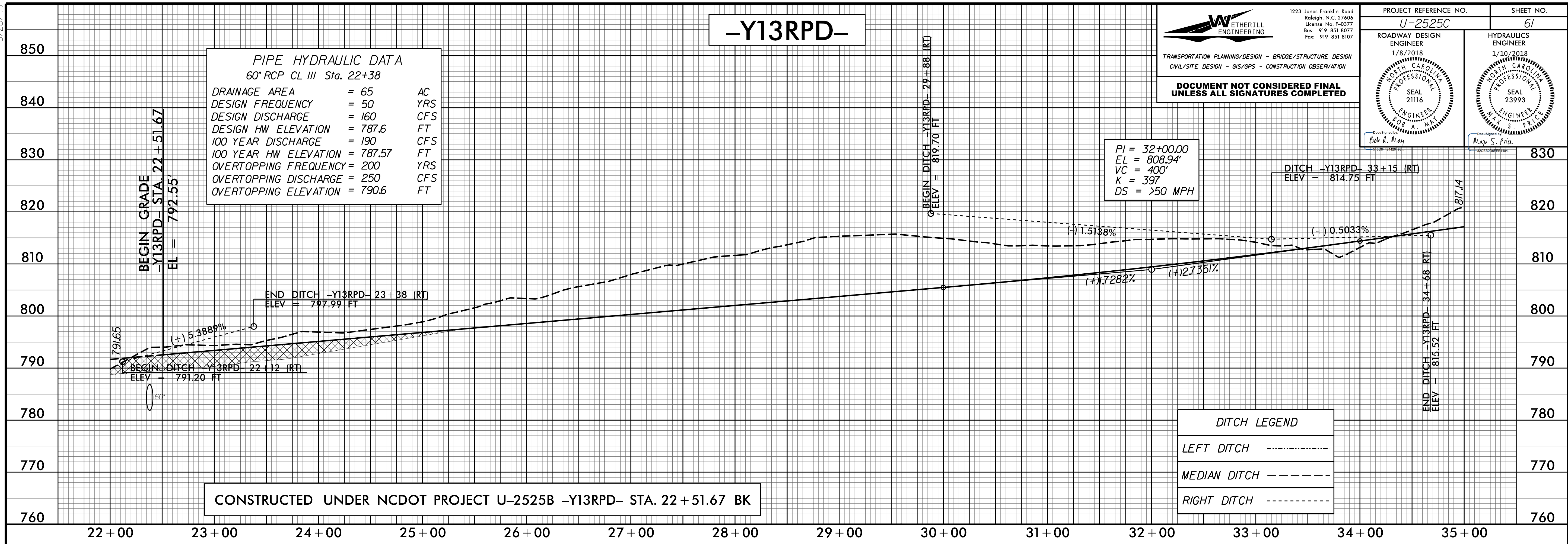


5/25/2017

12/6/2017 U:\2525c_rdy_psh_61.pfl.dgn



PIPE HYDRAULIC DATA
60" RCP CL III Sta. 22+38

DRAINAGE AREA	= 65	AC
DESIGN FREQUENCY	= 50	YRS
DESIGN DISCHARGE	= 160	CFS
DESIGN HW ELEVATION	= 787.6	FT
100 YEAR DISCHARGE	= 190	CFS
100 YEAR HW ELEVATION	= 787.57	FT
OVERTOPPING FREQUENCY	= 200	YRS
OVERTOPPING DISCHARGE	= 250	CFS
OVERTOPPING ELEVATION	= 790.6	FT

WETHERILL ENGINEERING
1223 Jones Franklin Road
Raleigh, N.C. 27606
License No. F-0377
Bus: 919 851 8077
Fax: 919 851 8107

TRANSPORTATION PLANNING/DESIGN - BRIDGE/STRUCTURE DESIGN
CIVIL/SITE DESIGN - GIS/GPS - CONSTRUCTION OBSERVATION

**DOCUMENT NOT CONSIDERED FINAL
UNLESS ALL SIGNATURES COMPLETED**

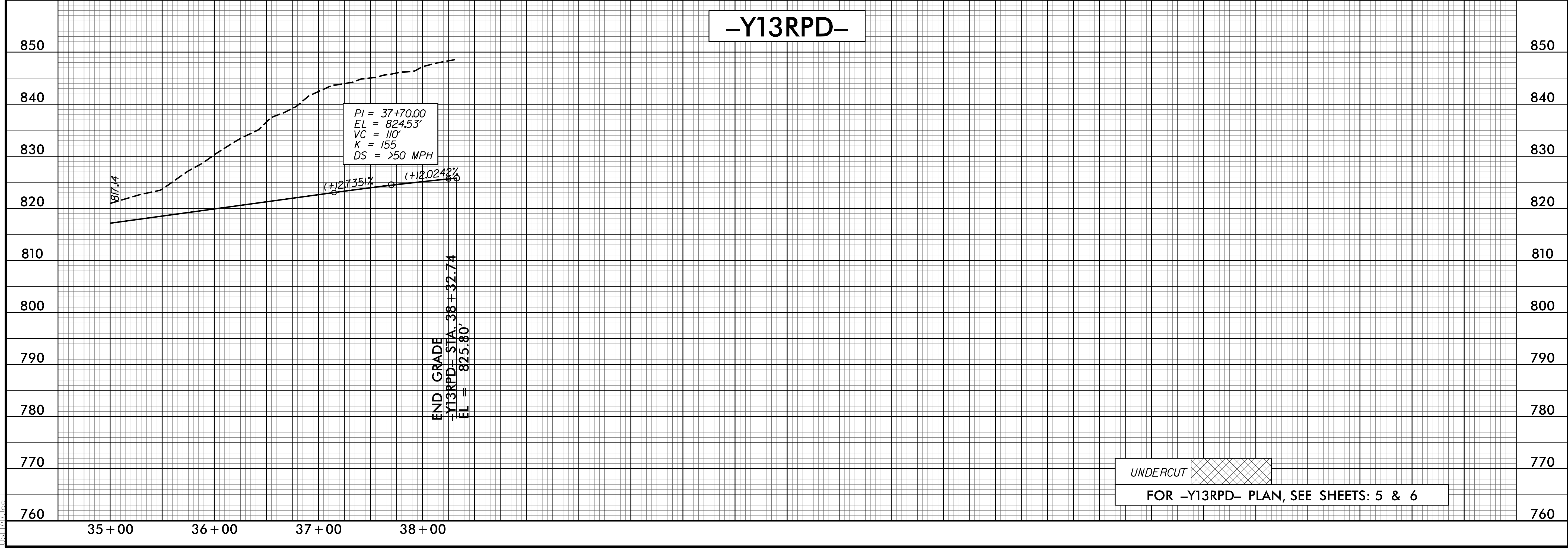
PROJECT REFERENCE NO. U-2525C	SHEET NO. 61
ROADWAY DESIGN ENGINEER 1/8/2018 SEAL 21116 Bob L. May	HYDRAULICS ENGINEER 1/10/2018 SEAL 23993 Max S. Price

PI = 32+00.00
EL = 808.94'
VC = 400'
K = 397
DS = >50 MPH

DITCH LEGEND

LEFT DITCH	-----
MEDIAN DITCH	-----
RIGHT DITCH	-----

CONSTRUCTED UNDER NCDOT PROJECT U-2525B -Y13RPD- STA. 22 + 51.67 BK



PI = 37+70.00
EL = 824.53'
VC = 110'
K = 155
DS = >50 MPH

UNDERCUT
FOR -Y13RPD- PLAN, SEE SHEETS: 5 & 6