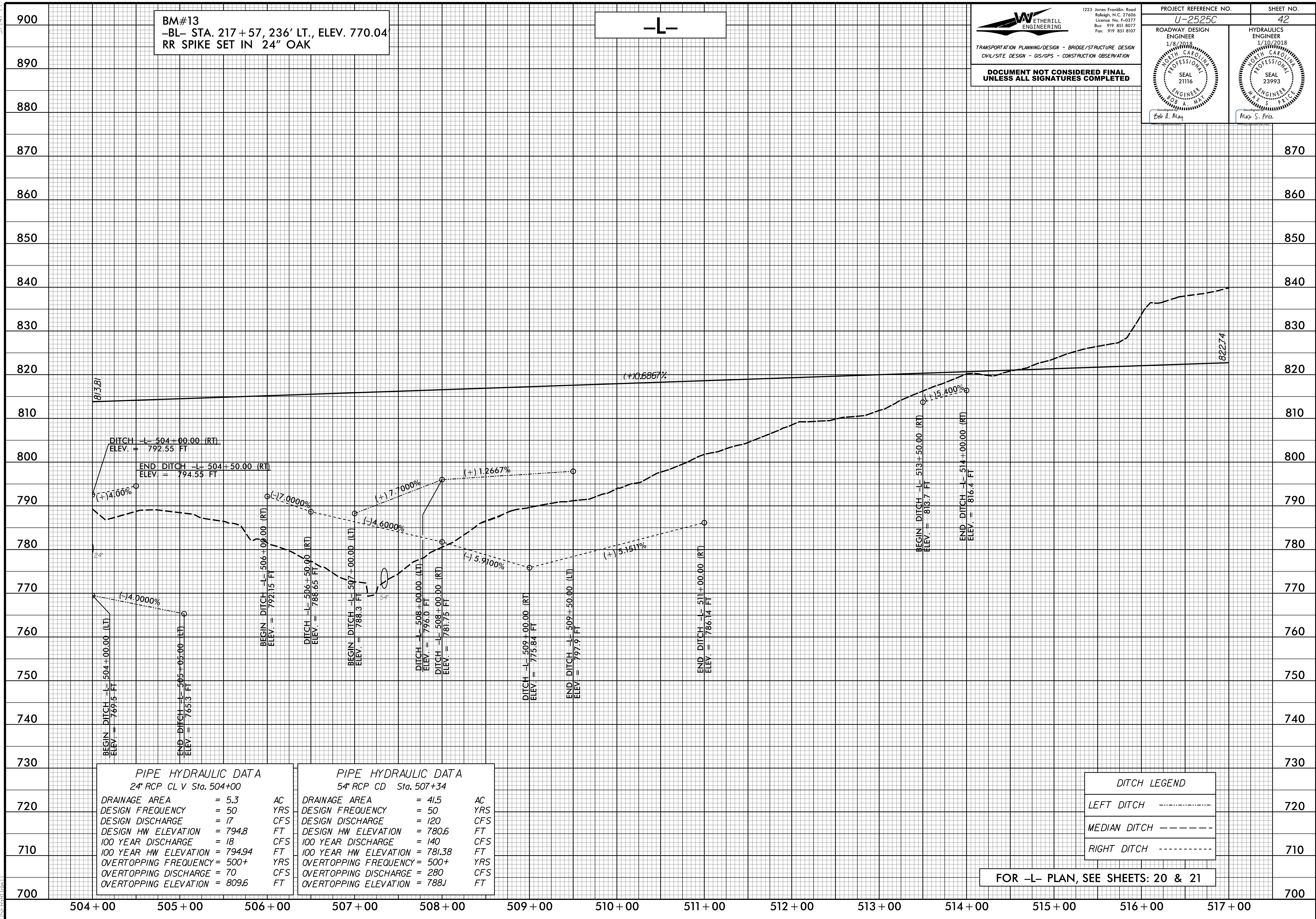


5/14/99



BM#13
 -BL- STA. 217+57, 236' LT., ELEV. 770.04
 RR SPIKE SET IN 24" OAK

-L-

WETHERILL ENGINEERING
 1223 Jones Franklin Road
 Raleigh, N.C. 27606
 License No. P-0377
 Bus: 919 851 8077
 Fax: 919 851 8107

TRANSPORTATION PLANNING/DESIGN - BRIDGE/STRUCTURE DESIGN
 CIVIL/SITE DESIGN - GIS/GPS - CONSTRUCTION OBSERVATION

**DOCUMENT NOT CONSIDERED FINAL
 UNLESS ALL SIGNATURES COMPLETED**

PROJECT REFERENCE NO. U-2525C	SHEET NO. 42
ROADWAY DESIGN ENGINEER 1/8/2018 NORTH CAROLINA PROFESSIONAL ENGINEER SEAL 21116 E. A. MAY	HYDRAULICS ENGINEER 1/10/2018 NORTH CAROLINA PROFESSIONAL ENGINEER SEAL 23993 MAY S. PRICE

PIPE HYDRAULIC DATA
24" RCP CL V Sta. 504+00

DRAINAGE AREA = 5.3	AC
DESIGN FREQUENCY = 50	YRS
DESIGN DISCHARGE = 17	CFS
DESIGN HW ELEVATION = 794.8	FT
100 YEAR DISCHARGE = 18	CFS
100 YEAR HW ELEVATION = 794.94	FT
OVERTOPPING FREQUENCY = 500+	YRS
OVERTOPPING DISCHARGE = 70	CFS
OVERTOPPING ELEVATION = 809.6	FT

PIPE HYDRAULIC DATA
54" RCP CD Sta. 507+34

DRAINAGE AREA = 41.5	AC
DESIGN FREQUENCY = 50	YRS
DESIGN DISCHARGE = 120	CFS
DESIGN HW ELEVATION = 780.6	FT
100 YEAR DISCHARGE = 140	CFS
100 YEAR HW ELEVATION = 781.38	FT
OVERTOPPING FREQUENCY = 500+	YRS
OVERTOPPING DISCHARGE = 280	CFS
OVERTOPPING ELEVATION = 788J	FT

DITCH LEGEND

LEFT DITCH	-----
MEDIAN DITCH	-----
RIGHT DITCH	-----

FOR -L- PLAN, SEE SHEETS: 20 & 21

12/6/2017 10:25:25e...rdy_psh_42.plt.dgn