

5/25/2017

12/27/2017 11:58:30 AM I:\Projects\2525c\_rdy\_psh\_37.pfl.dgn

BM#6  
-BL- STA. 92+17, 254' RT., ELEV. 765.66'  
RR SPIKE SET IN 11" OAK

-L-

**WETHERILL ENGINEERING**  
1223 Jones Franklin Road  
Raleigh, N.C. 27606  
License No. F-0377  
Bus: 919 851 8077  
Fax: 919 851 8107

TRANSPORTATION PLANNING/DESIGN - BRIDGE/STRUCTURE DESIGN  
CIVIL/SITE DESIGN - GIS/GPS - CONSTRUCTION OBSERVATION

**DOCUMENT NOT CONSIDERED FINAL  
UNLESS ALL SIGNATURES COMPLETED**

PROJECT REFERENCE NO. <b>U-2525C</b>	SHEET NO. <b>37</b>
ROADWAY DESIGN ENGINEER 1/8/2018 SEAL 21116 E. H. MAY	HYDRAULICS ENGINEER 1/10/2018 SEAL 23993 MAY S. PRILE

**CULVERT HYDRAULIC DATA**

DESIGN DISCHARGE	= 230	CFS
DESIGN FREQUENCY	= 50	YRS
DESIGN HW ELEVATION	= 772.3	FT
BASE DISCHARGE	= 260	CFS
BASE FREQUENCY	= 100	YRS
BASE HW ELEVATION	= 772.85	FT
OVERTOPPING DISCHARGE	= 810	CFS
OVERTOPPING FREQUENCY	= 500+	YRS
OVERTOPPING ELEVATION	= 802.0	FT

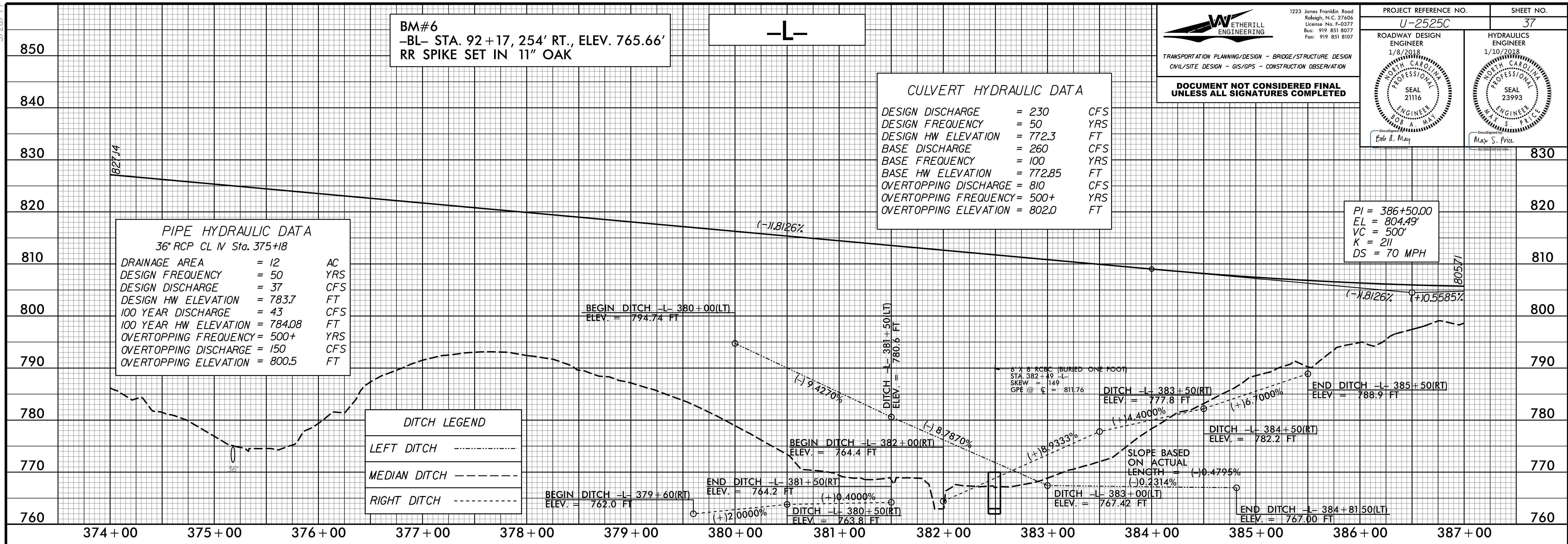
**PIPE HYDRAULIC DATA**  
36" RCP CL IV Sta. 375+18

DRAINAGE AREA	= 12	AC
DESIGN FREQUENCY	= 50	YRS
DESIGN DISCHARGE	= 37	CFS
DESIGN HW ELEVATION	= 783.7	FT
100 YEAR DISCHARGE	= 43	CFS
100 YEAR HW ELEVATION	= 784.08	FT
OVERTOPPING FREQUENCY	= 500+	YRS
OVERTOPPING DISCHARGE	= 150	CFS
OVERTOPPING ELEVATION	= 800.5	FT

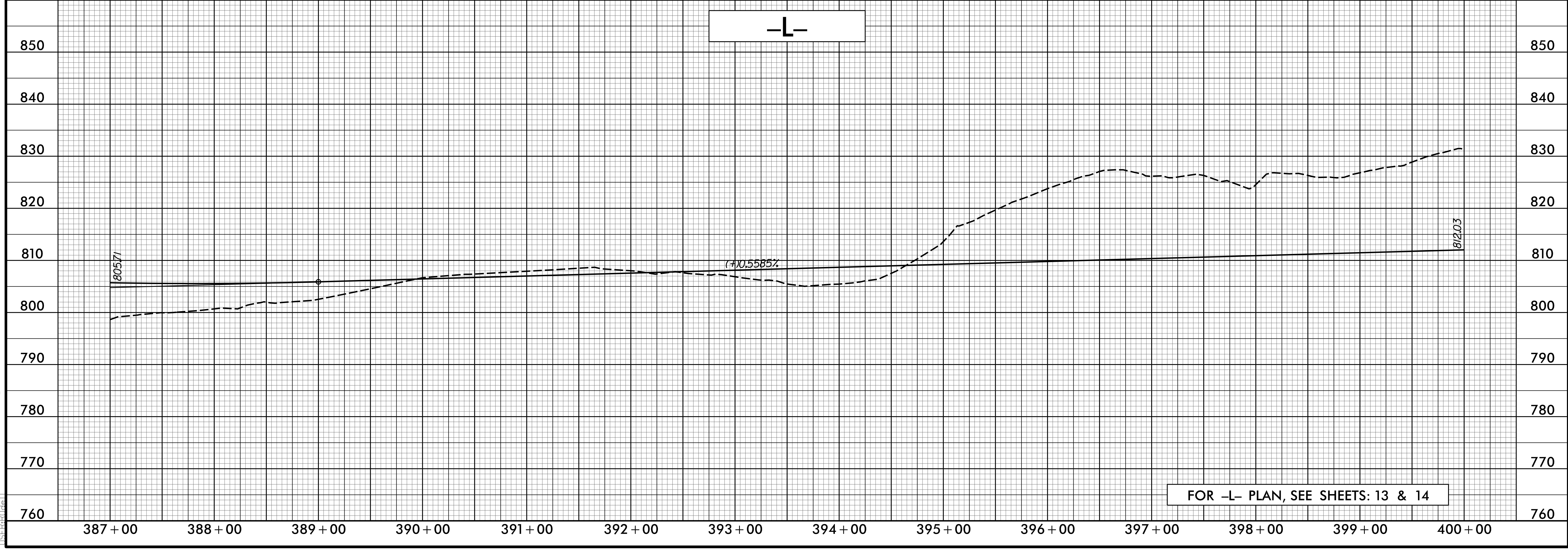
PI = 386+50.00  
EL = 804.49'  
VC = 500'  
K = 211  
DS = 70 MPH

**DITCH LEGEND**

LEFT DITCH	-----
MEDIAN DITCH	-----
RIGHT DITCH	-----



-L-



FOR -L- PLAN, SEE SHEETS: 13 & 14