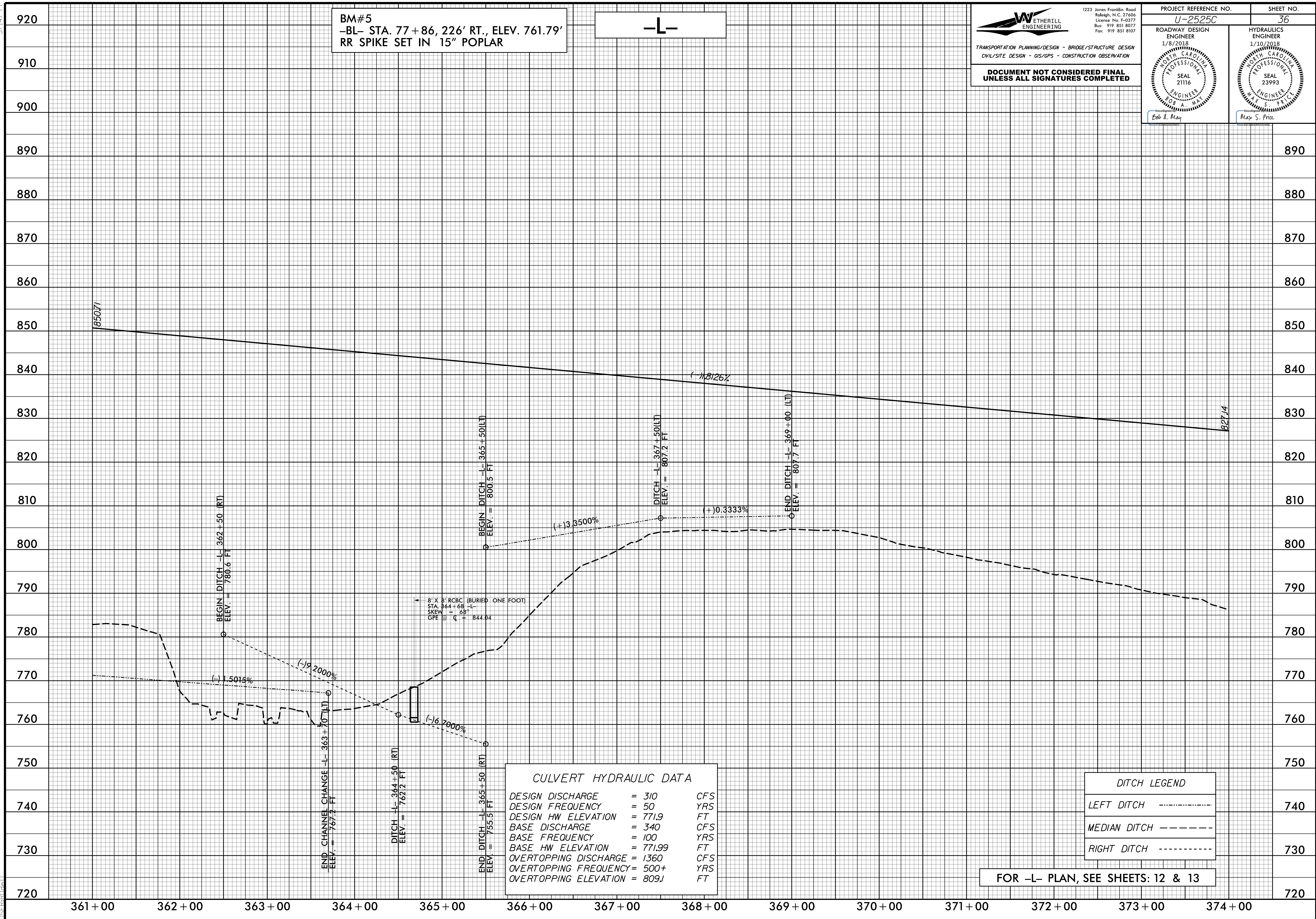


5/14/99



BM#5
 -BL- STA. 77 + 86, 226' RT., ELEV. 761.79'
 RR SPIKE SET IN 15" POPLAR

-L-

WETHERILL ENGINEERING
 1223 Jones Franklin Road
 Raleigh, N.C. 27606
 License No. F-0377
 Bus: 919 851 8077
 Fax: 919 851 8107

TRANSPORTATION PLANNING/DESIGN - BRIDGE/STRUCTURE DESIGN
 CIVIL/SITE DESIGN - GIS/GPS - CONSTRUCTION OBSERVATION

**DOCUMENT NOT CONSIDERED FINAL
 UNLESS ALL SIGNATURES COMPLETED**

PROJECT REFERENCE NO. U-2525C	SHEET NO. 36
ROADWAY DESIGN ENGINEER 1/8/2018	HYDRAULICS ENGINEER 1/10/2018
SEAL 21116 BOB A. MAY	SEAL 23993 MAX S. PRICE
<i>Bob A. May</i>	<i>Max S. Price</i>

CULVERT HYDRAULIC DATA

DESIGN DISCHARGE	= 310	CFS
DESIGN FREQUENCY	= 50	YRS
DESIGN HW ELEVATION	= 771.9	FT
BASE DISCHARGE	= 340	CFS
BASE FREQUENCY	= 100	YRS
BASE HW ELEVATION	= 771.99	FT
OVERTOPPING DISCHARGE	= 1360	CFS
OVERTOPPING FREQUENCY	= 500+	YRS
OVERTOPPING ELEVATION	= 809.1	FT

DITCH LEGEND

LEFT DITCH	-----
MEDIAN DITCH	-----
RIGHT DITCH	-----

FOR -L- PLAN, SEE SHEETS: 12 & 13

12/27/2017 11:58:30 AM U:\2525c_rdy_psh_36.plt.dgn