

5/25/2017

12/6/2017 10:25:25 a.m. rdy\_psh\_33.plt.dgn

BM#1  
-BL- STA. 10+01, 203' LT., ELEV. 855.74'  
RR SPIKE SET IN 14" SEWEEET GUM

-L-

**WETHERILL ENGINEERING**  
1223 Jones Franklin Road  
Raleigh, N.C. 27606  
License No. F-0377  
Bus: 919 851 8077  
Fax: 919 851 8107

TRANSPORTATION PLANNING/DESIGN - BRIDGE/STRUCTURE DESIGN  
CIVIL/SITE DESIGN - GIS/GPS - CONSTRUCTION OBSERVATION

**DOCUMENT NOT CONSIDERED FINAL  
UNLESS ALL SIGNATURES COMPLETED**

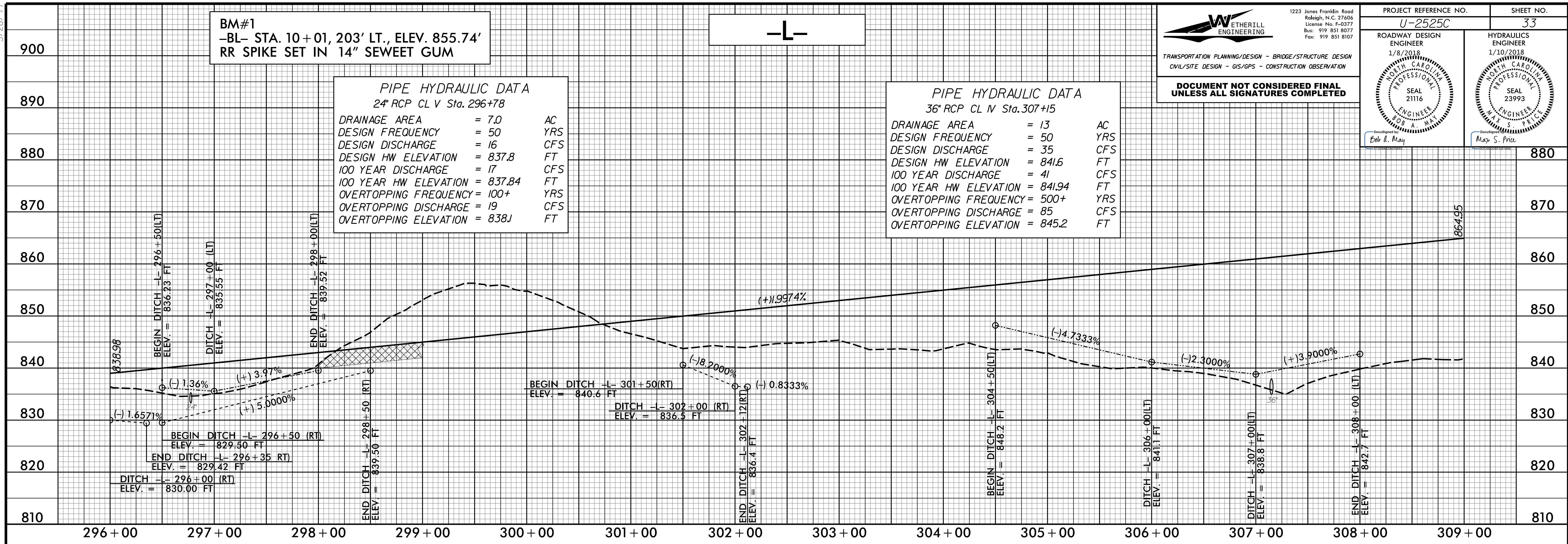
PROJECT REFERENCE NO. <b>U-2525C</b>	SHEET NO. <b>33</b>
ROADWAY DESIGN ENGINEER 1/8/2018 SEAL 21116 E. L. May	HYDRAULICS ENGINEER 1/10/2018 SEAL 23993 M. S. Price

**PIPE HYDRAULIC DATA**  
24" RCP CL V Sta. 296+78

DRAINAGE AREA	= 7.0	AC
DESIGN FREQUENCY	= 50	YRS
DESIGN DISCHARGE	= 16	CFS
DESIGN HW ELEVATION	= 837.8	FT
100 YEAR DISCHARGE	= 17	CFS
100 YEAR HW ELEVATION	= 837.84	FT
OVERTOPPING FREQUENCY	= 100+	YRS
OVERTOPPING DISCHARGE	= 19	CFS
OVERTOPPING ELEVATION	= 838J	FT

**PIPE HYDRAULIC DATA**  
36" RCP CL N Sta. 307+15

DRAINAGE AREA	= 13	AC
DESIGN FREQUENCY	= 50	YRS
DESIGN DISCHARGE	= 35	CFS
DESIGN HW ELEVATION	= 841.6	FT
100 YEAR DISCHARGE	= 41	CFS
100 YEAR HW ELEVATION	= 841.94	FT
OVERTOPPING FREQUENCY	= 500+	YRS
OVERTOPPING DISCHARGE	= 85	CFS
OVERTOPPING ELEVATION	= 845.2	FT



BM#2  
-BL- STA. 27+33, 304' RT., ELEV. 817.88'  
RR SPIKE SET IN 18" WHITE OAK

-L-

**PIPE HYDRAULIC DATA**  
54" RCP CD Sta. 315+02.5

DRAINAGE AREA	= 49	AC
DESIGN FREQUENCY	= 50	YRS
DESIGN DISCHARGE	= 120	CFS
DESIGN HW ELEVATION	= 828.72	FT
100 YEAR DISCHARGE	= 140	CFS
100 YEAR HW ELEVATION	= 829.37	FT
OVERTOPPING FREQUENCY	= 500+	YRS
OVERTOPPING DISCHARGE	= 400	CFS
OVERTOPPING ELEVATION	= 845.2	FT

**PIPE HYDRAULIC DATA**  
36" RCP CD Sta. 313+50

DRAINAGE AREA	= 9.2	AC
DESIGN FREQUENCY	= 50	YRS
DESIGN DISCHARGE	= 39	CFS
DESIGN HW ELEVATION	= 834.4	FT
100 YEAR DISCHARGE	= 41	CFS
100 YEAR HW ELEVATION	= 834.5	FT
OVERTOPPING FREQUENCY	= 100	YRS
OVERTOPPING DISCHARGE	= 48	CFS
OVERTOPPING ELEVATION	= 835.0	FT

**UNDERCUT**

**DITCH LEGEND**

LEFT DITCH

MEDIAN DITCH

RIGHT DITCH

FOR -L- PLAN, SEE SHEETS: 7, 8 & 9

