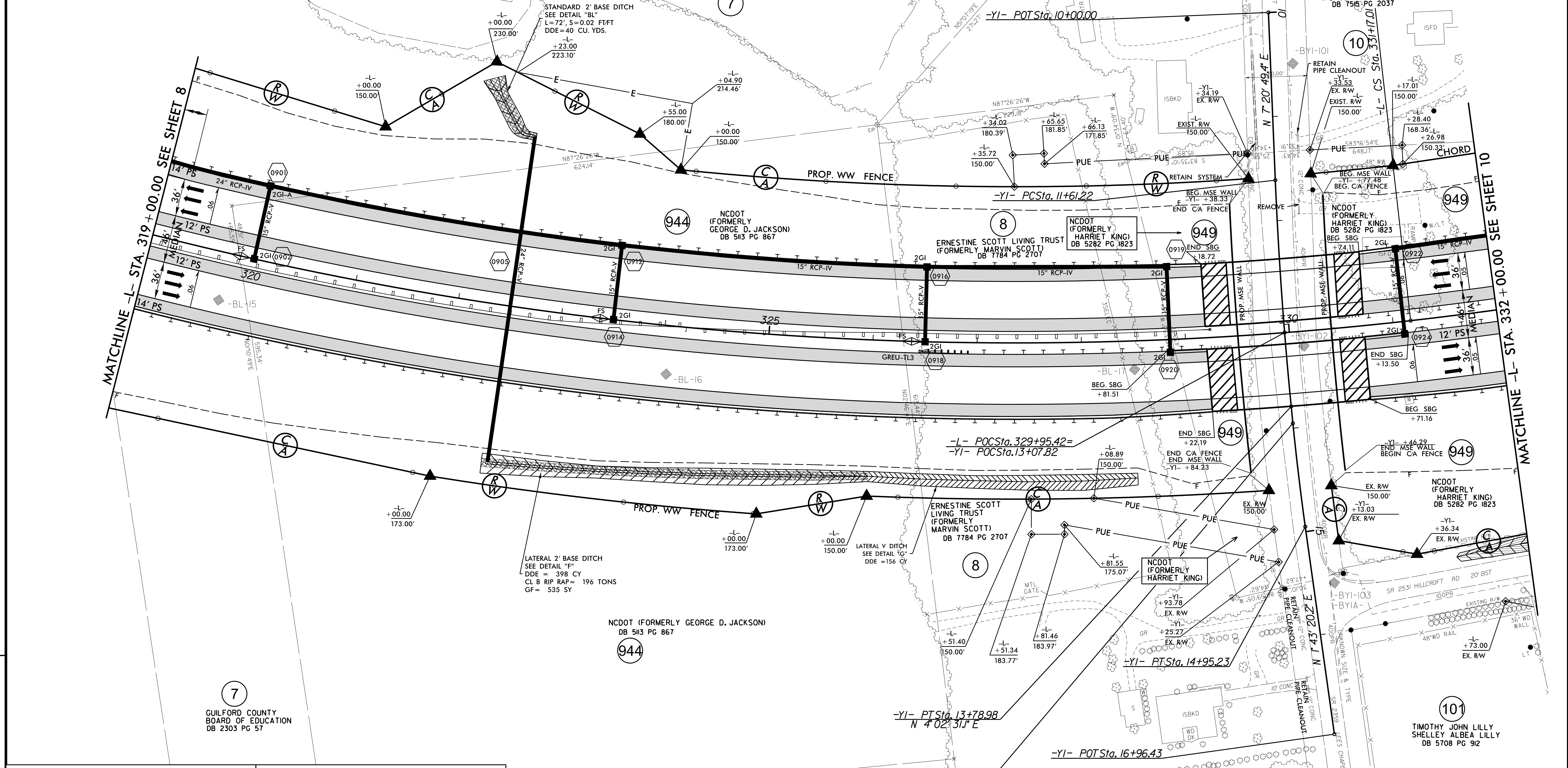


WETHERILL ENGINEERING
 TRANSPORTATION PLANNING/DESIGN - BRIDGE/STRUCTURE DESIGN
 CIVIL/SITE DESIGN - GIS/GPS - CONSTRUCTION OBSERVATION

PROJECT REFERENCE NO. U-2525C		SHEET NO. 9
RW SHEET NO.		HYDRAULICS ENGINEER 1/10/2018
ROADWAY DESIGN ENGINEER 1/8/2018	SEAL 21116 Bob A. May	
PROFESSIONAL ENGINEER NORTH CAROLINA DB 5053 PG 193		SEAL 23993 Mary S. Price
DOCUMENT NOT CONSIDERED FINAL UNLESS ALL SIGNATURES COMPLETED		



-L-		-YI-	
PI Sta 322+54.68 $\Delta = 30' 07'' 23.3''$ (LT) $D = 1' 42'' 18.8''$ $L = 1766.51'$ $T = 904.18'$ $R = 3,360.00'$ $SE = .06$	PIs Sta 332+37.04 $\Theta_s = 3' 04'' 09.9''$ $L_s = 360.00'$ $LT = 240.04'$ $ST = 120.03'$	PI Sta 12+70.13 $\Delta = 3' 18'' 18.2''$ (LT) $D = 1' 31'' 04.0''$ $L = 217.76'$ $T = 108.91'$ $R = 3,775.00'$	PI Sta 14+45.24 $\Delta = 2' 19'' 10.9''$ (LT) $D = 2' 19'' 10.8''$ $L = 100.00'$ $T = 50.01'$ $R = 2,470.00'$

SEE SHEET 2B-1 FOR BRIDGE SKETCH
 SEE SHEETS 2D-1 THRU 2D-7 FOR DRAINAGE DETAILS
 SEE SHEETS 33 & 34 FOR -L- PROFILE
 SEE SHEET 48 FOR -YI- PROFILE
 SEE SHEETS S2-1 THRU S2-28 FOR STRUCTURE PLANS
 SEE SHEETS S3-1 THRU S3-28 FOR STRUCTURE PLANS