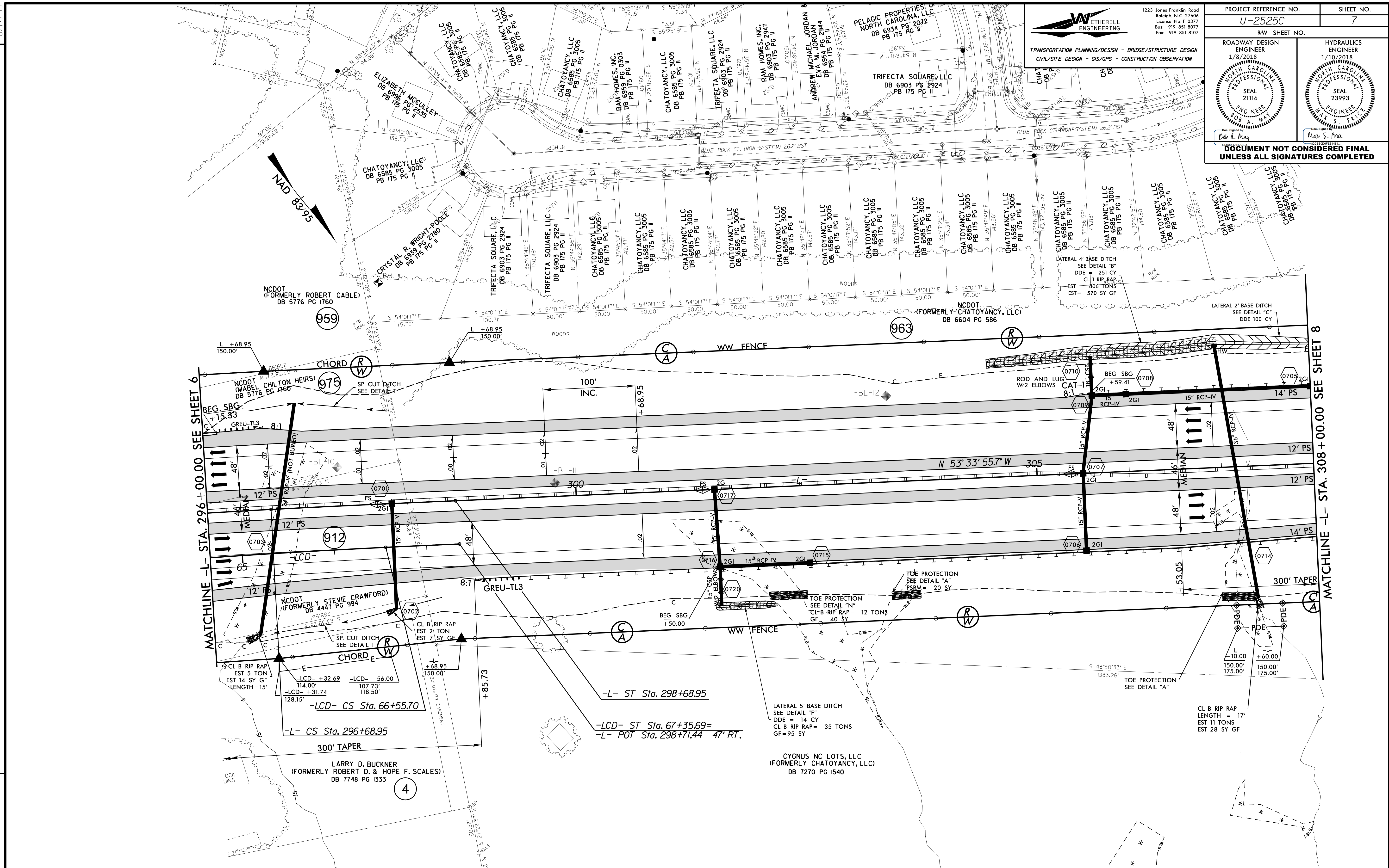


8.17.2017

PROJECT REFERENCE NO. U-2525C		SHEET NO. 7	
RW SHEET NO.			
ROADWAY DESIGN ENGINEER 1/8/2018		HYDRAULICS ENGINEER 1/10/2018	
DOCUMENT NOT CONSIDERED FINAL UNLESS ALL SIGNATURES COMPLETED			

1223 Jones Franklin Road
Raleigh, N.C. 27606
License No. F-0377
Bus. 919 851 8077
Fax: 919 851 8107

TRANSPORTATION PLANNING/DESIGN - BRIDGE/STRUCTURE DESIGN
CIVIL/SITE DESIGN - GIS/GPS - CONSTRUCTION OBSERVATION



REVISIONS

-L-	-LCD-	-L-	-LCD-
PI Sta 288+11.64 $\Delta = 9' 50'' 53.9''$ (RT) $D = 0' 34'' 22.6''$ $L = 1718.85'$ $T = 861.55'$ $R = 10,000.00'$ $SE = .02$	PIs Sta 297+35.61 $\Theta_s = 0' 34'' 22.6''$ $L_s = 200.00'$ $LT = 133.33'$ $ST = 66.67'$	PI Sta 58+58.43 $\Delta = 10' 28'' 13.4''$ (RT) $D = 0' 39'' 17.3''$ $L = 1599.00'$ $T = 801.73'$ $R = 8750.00'$ $SE = NC$ $DS = 50$ MPH	PIs Sta 66+82.36 $\Theta_s = 0' 15'' 42.9''$ $L_s = 80.00'$ $LT = 53.33'$ $ST = 26.67'$

SEE SHEETS 2D-1 THRU 2D-7 FOR DRAINAGE DETAILS
 SEE SHEET 33 FOR -L- PROFILE
 SEE SHEETS 46 & 47 FOR -LCD- PROFILE