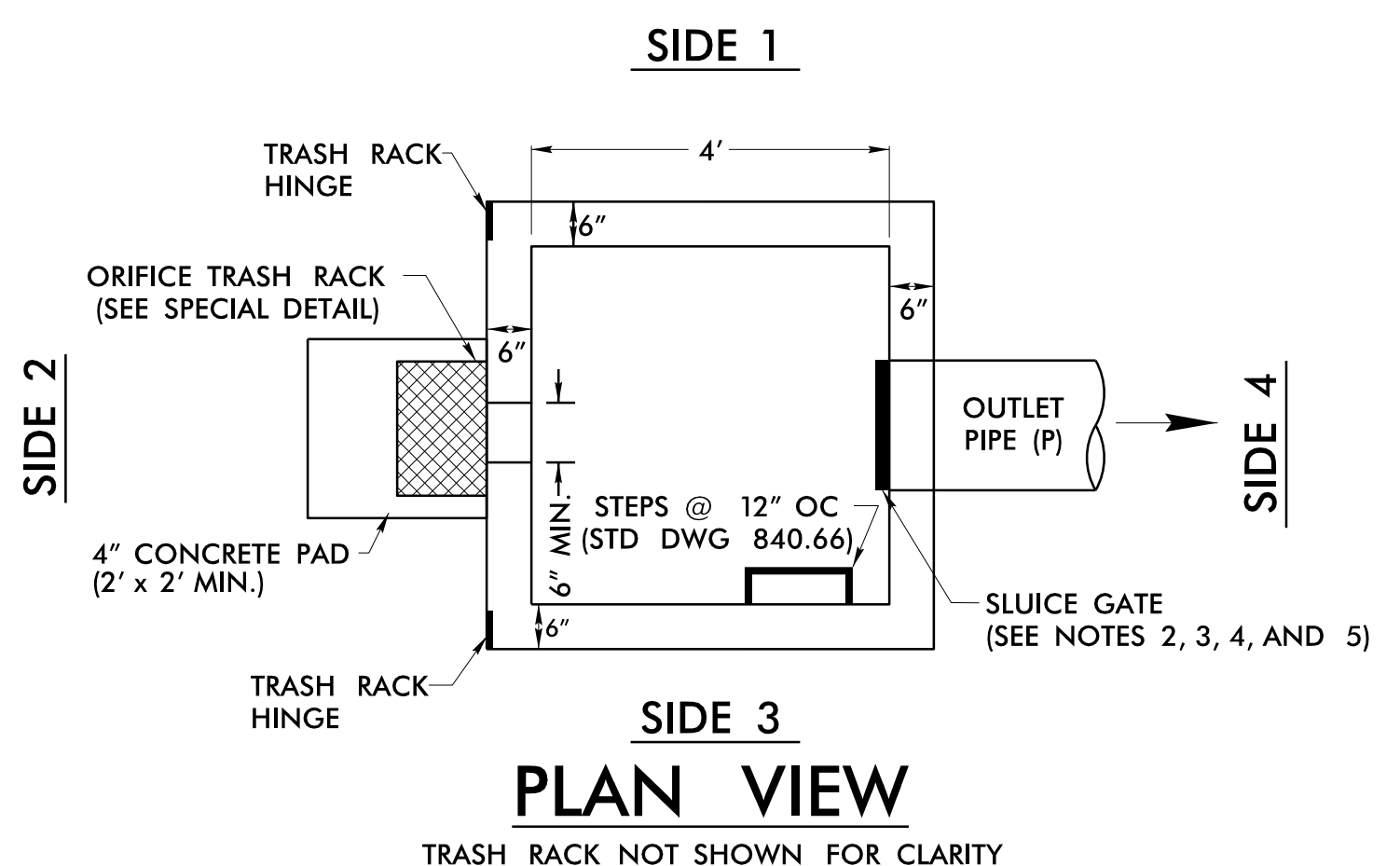
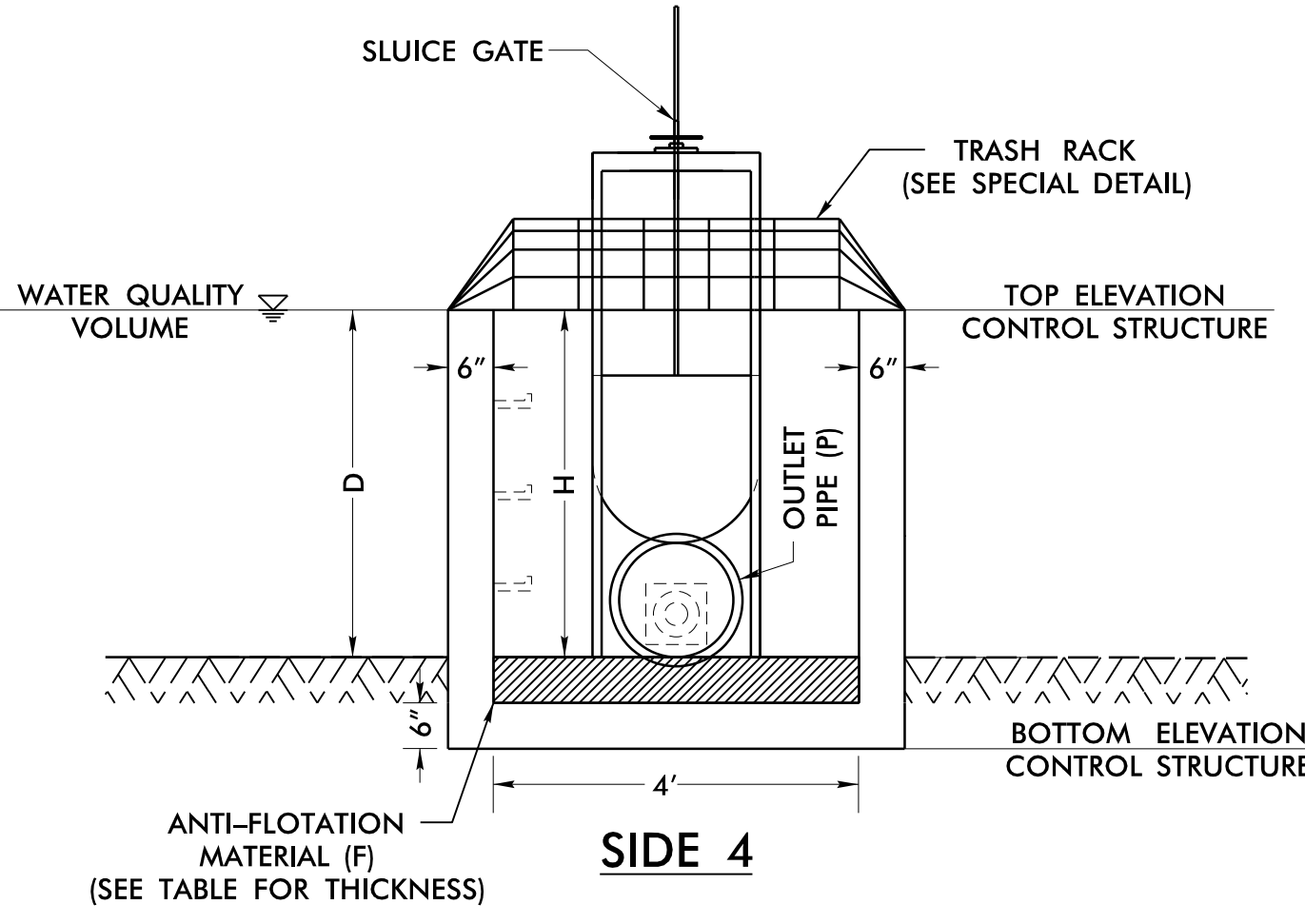
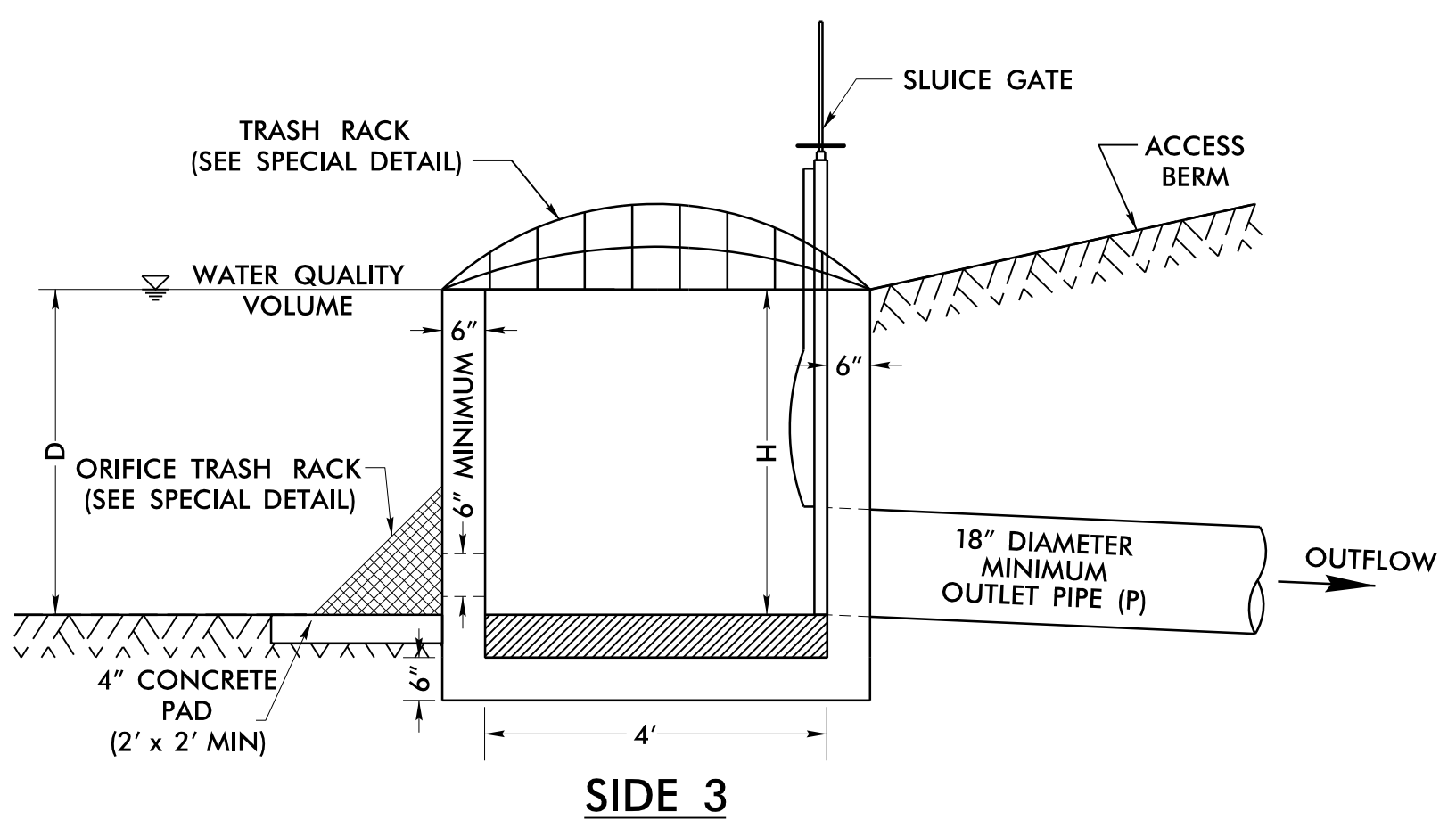
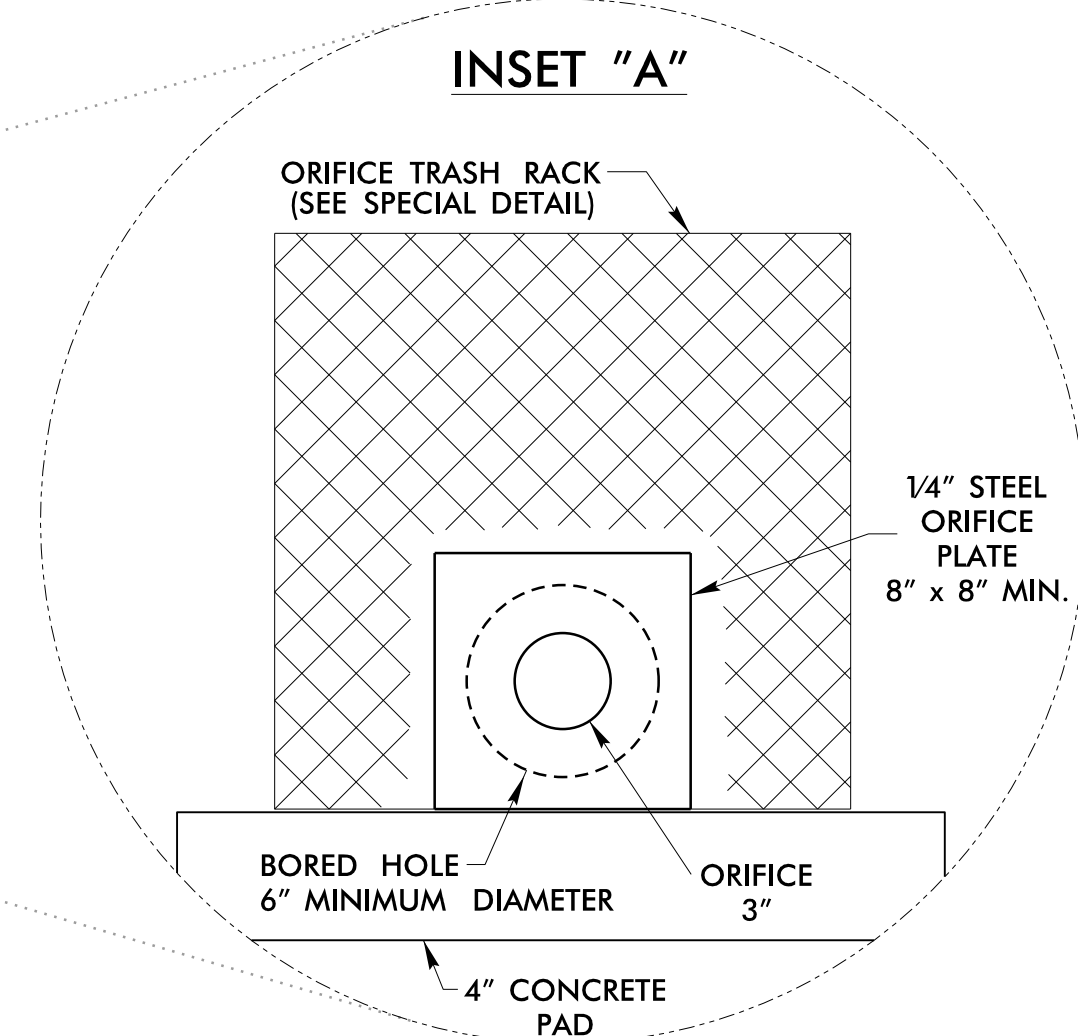
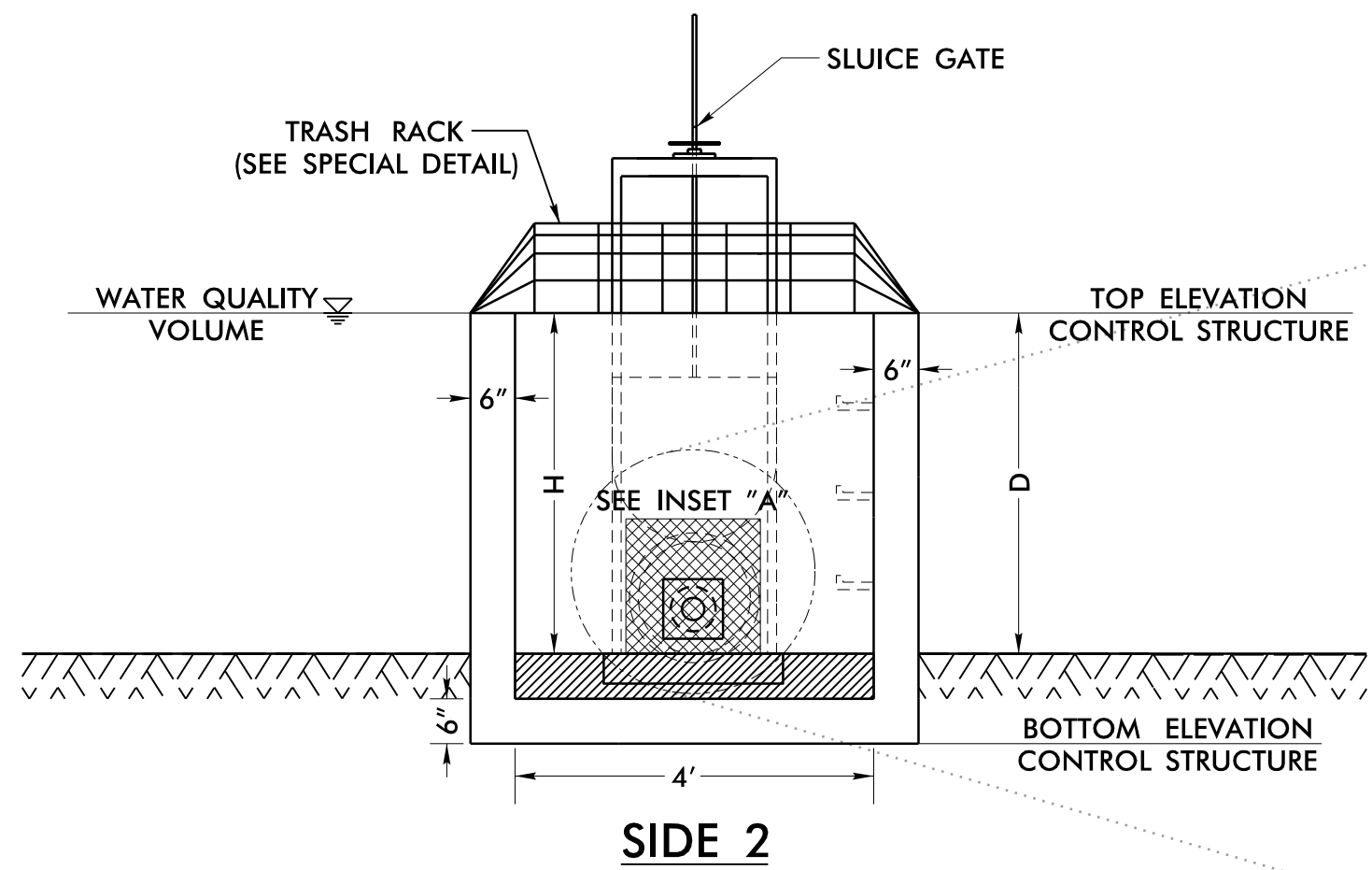
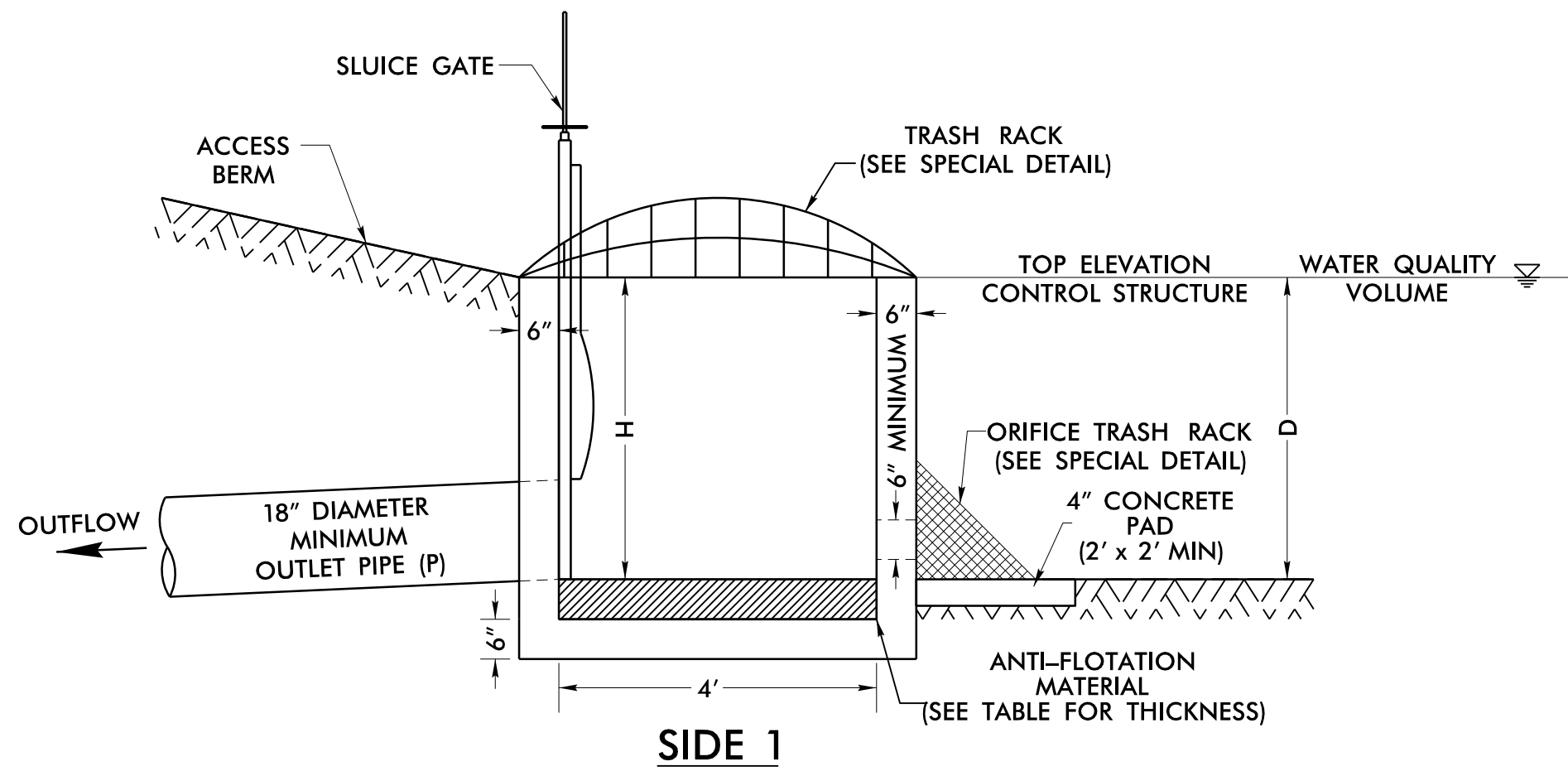


OUTLET CONTROL STRUCTURE DETAILS FOR COMBINATION DRY DETENTION /HAZARDOUS SPILL BASINS 1 AND 8



DIMENSIONS

D = PONDING DEPTH (BASED ON WATER QUALITY ELEVATION)
 F = ANTI-FLOTATION MATERIAL THICKNESS
 MINIMUM H = D
 SLAB THICKNESS IS 0.5'

NOTES

- ONE 3" DIAMETER DRAWDOWN ORIFICE HOLE IS REQUIRED.
- SLUICE GATE SHOULD REMAIN OPEN DURING NORMAL OPERATION.
- REFER TO NCDOT STD DWG 838.02 FOR DIAMETER OF SLUICE GATE.
- SLUICE GATE SHALL BE CAPABLE OF PROVIDING A WATERTIGHT SEAL. PROVIDE ADEQUATE CLEARANCE FOR GATE OPERATION AND FOR PROPER SEATING OF GATE OVER PIPE.
- ENSURE THAT THE TRASH RACK OPENS FREELY AND WITHOUT INTERFERENCE WITH THE SLUICE GATE.
- STEEL ORIFICE PLATE SHALL BE PLACED ON OUTSIDE WALL OF STRUCTURE.
- ANTI-FLOTATION MATERIAL IS REQUIRED AND SHALL BE CONCRETE.

REFERENCED SPECIAL DETAILS

FOR "TYPICAL SECTION DETAILS FOR COMBINATION DRY DETENTION /HAZARDOUS SPILL BASINS 1 AND 8" SEE SHEET 2D-5
 FOR "TRASH RACKS, CLEANOUT, AND PERIMETER DRAIN DETAILS" SEE SHEET 2D-7
 FOR SLUICE GATE DETAILS SEE MANUFACTURER'S DIMENSIONS AND SPECIFICATIONS

MINIMUM DIMENSIONS FOR COMBINATION DRY DETENTION /HAZARDOUS SPILL BASIN DRAWDOWN STRUCTURES												
BASIN	STATION	STRUCTURE NUMBER	BOTTOM ELEVATION BASIN	TOP ELEVATION CONTROL STRUCTURE	BASIN DEPTH (D)	ANTI-FLOTATION MATERIAL (F) THICKNESS	BOTTOM ELEVATION CONTROL STRUCTURE	DIMENSIONS CONTROL STRUCTURE (W x L x H)	DIAMETER DRAWDOWN ORIFICE	INVERT ELEVATION DRAWDOWN ORIFICE	DIAMETER OUTLET PIPE (P)	INVERT ELEVATION OUTLET PIPE (P)
1	-L- 333 + 58 (RT)	1001	853.20	857.00	3.8'	0.8'	851.90	4' x 4' x 3.8'	3"	853.7	18"	853.20
8	-Y4LPC- 12 + 76 (LT)	1498	800.80	804.50	3.7'	0.9'	799.40	4' x 4' x 3.7'	3"	801.3	24"	800.80