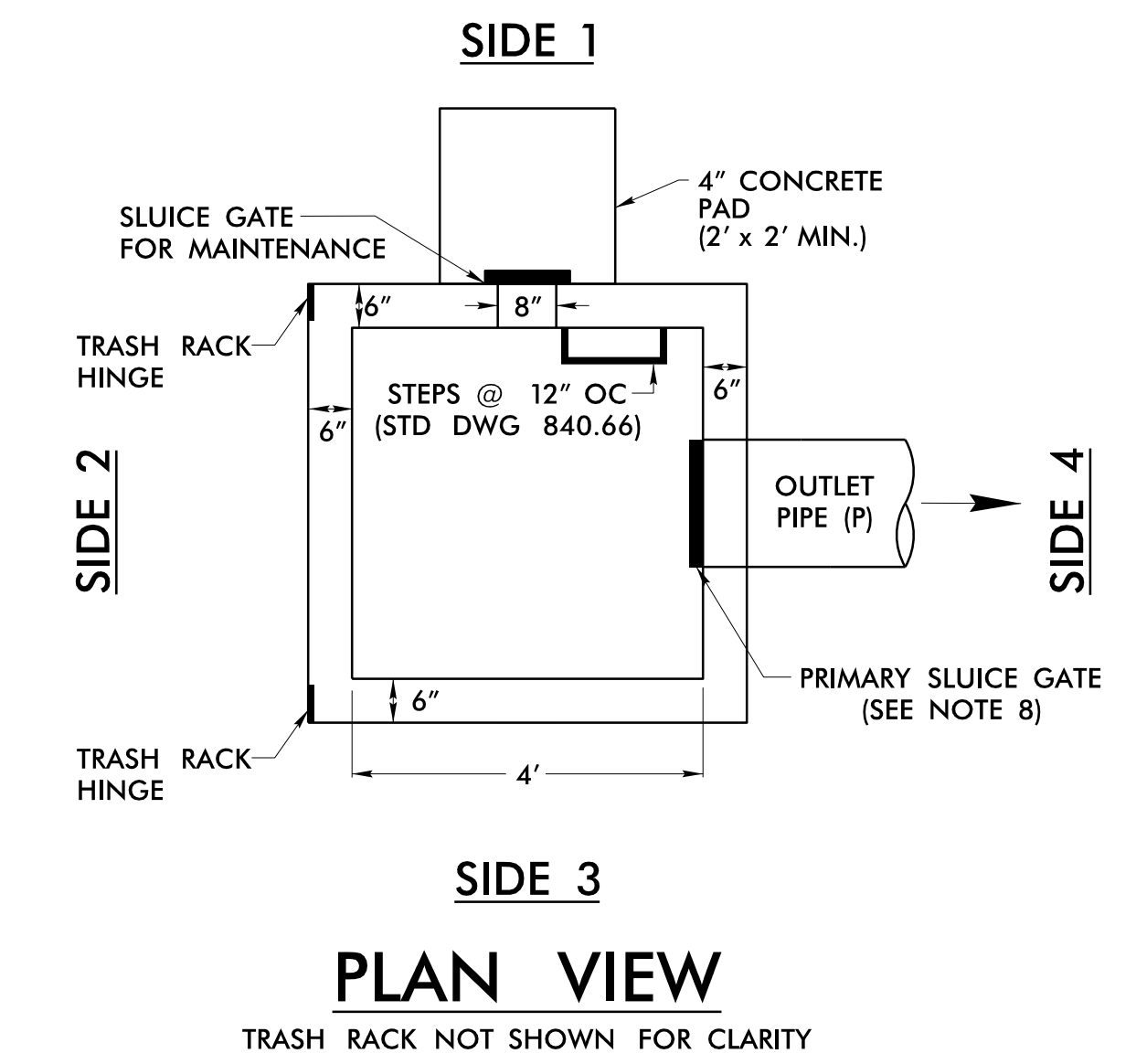
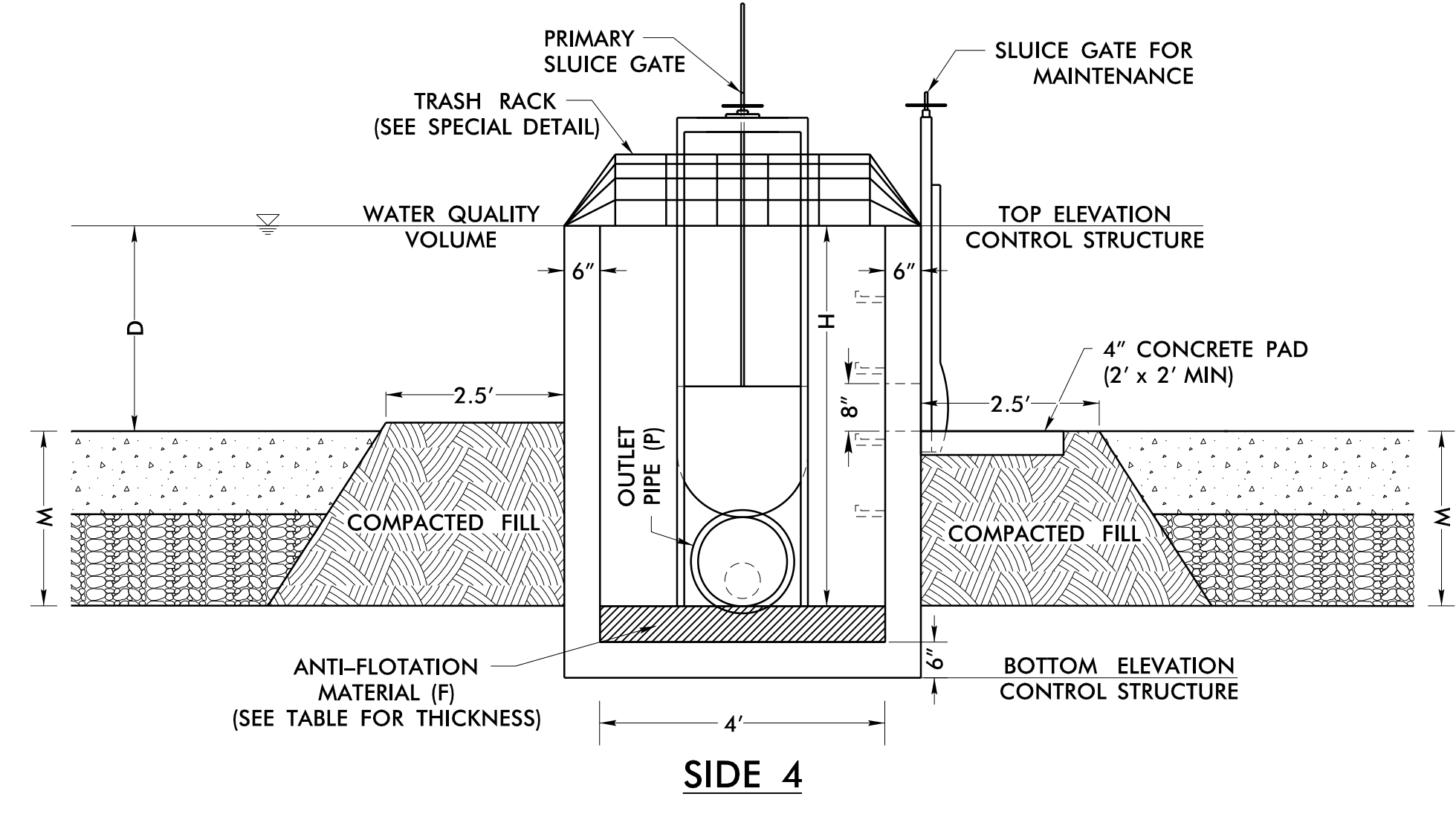
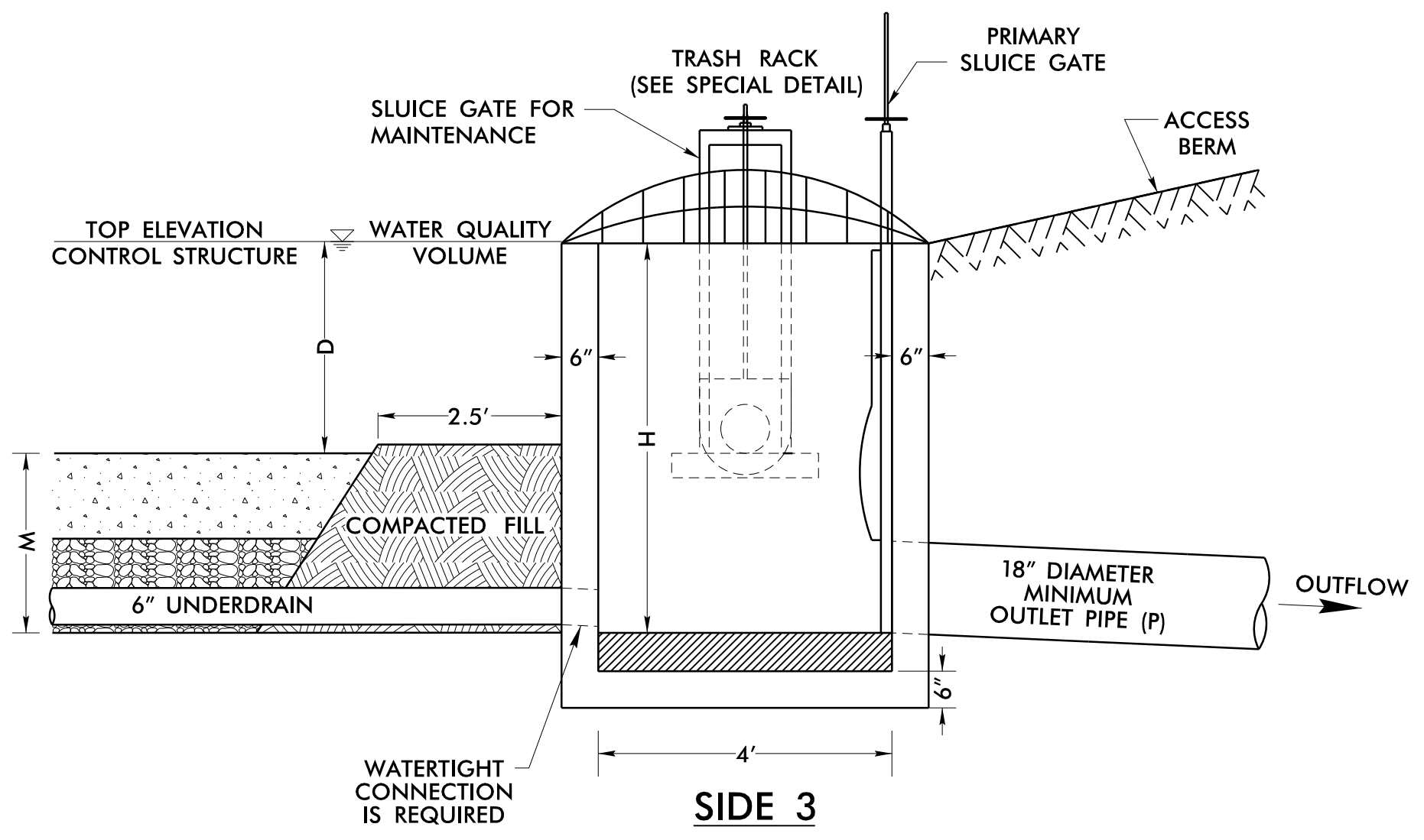
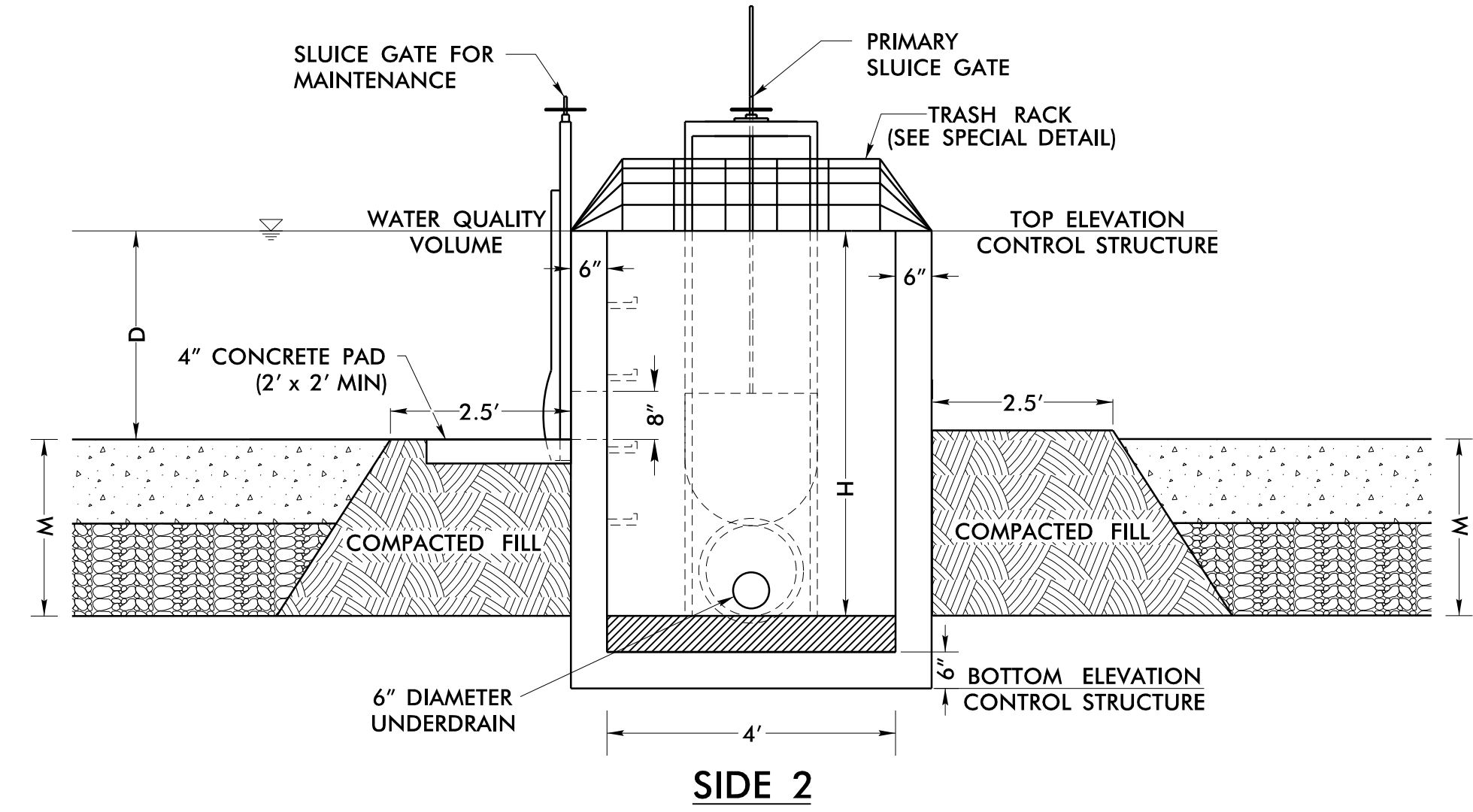
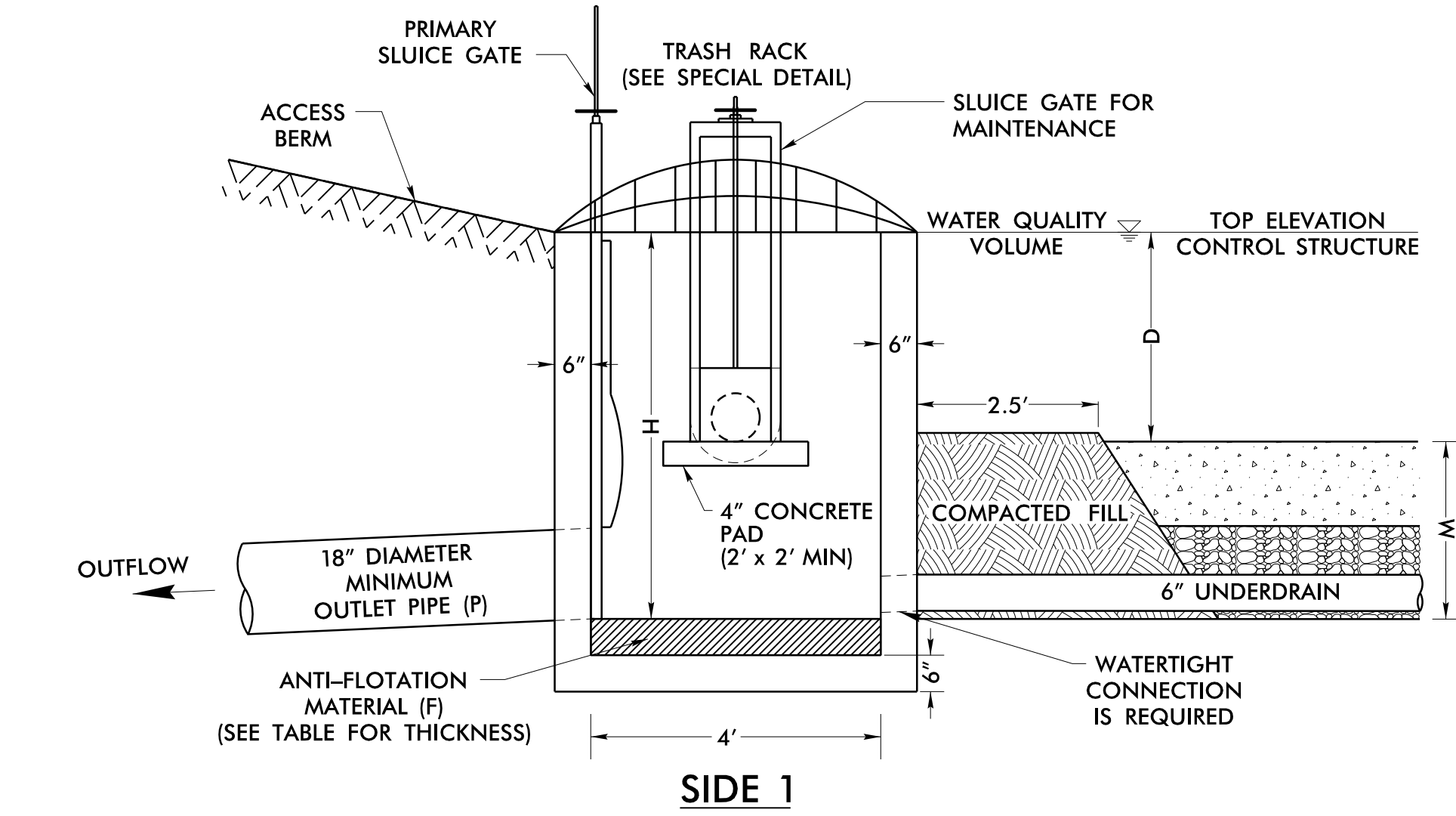


# OUTLET CONTROL STRUCTURE DETAILS FOR COMBINATION MEDIA FILTER /HAZARDOUS SPILL BASINS 2 THROUGH 7, AND 9



**DIMENSIONS**  
 D = PONDING DEPTH (BASED ON WATER QUALITY ELEVATION)  
 M = MEDIA FILTER + AGGREGATE THICKNESS  
 F = ANTI-FLOTATION MATERIAL THICKNESS  
 SLAB THICKNESS IS 0.5'  
 MINIMUM H = D + M

- NOTES**
1. PRIMARY SLUICE GATE SHOULD REMAIN OPEN DURING NORMAL OPERATION.
  2. BEDDING MATERIAL SHALL NOT TO BE USED. DO NOT FOLLOW STANDARD DRAWINGS FOR METHOD OF PIPE INSTALLATION FOR OUTLET PIPE THROUGH EMBANKMENT.
  3. A SLUICE GATE COVERING AN 8" ORIFICE WILL PROVIDE FOR DRAWDOWN DURING BASIN MAINTENANCE AND SHALL REMAIN CLOSED DURING NORMAL OPERATION.
  4. THE SLUICE GATE FOR MAINTENANCE SHALL BE PLACED ON THE OUTSIDE OF THE STRUCTURE.
  5. SLUICE GATES SHALL PROVIDE A WATERTIGHT SEAL. PROVIDE ADEQUATE CLEARANCE FOR GATE OPERATION AND FOR PROPER SEATING OF GATE OVER PIPE.
  6. ENSURE THAT THE TRASH RACK OPENS FREELY AND WITHOUT INTERFERENCE WITH SLUICE GATES.
  7. ANTI-FLOTATION MATERIAL IS REQUIRED AND SHALL BE CONCRETE.
  8. REFER TO NCDOT STD DWG 838.02 FOR DIAMETER OF PRIMARY SLUICE GATE.

**REFERENCED SPECIAL DETAILS**  
 FOR "TYPICAL SECTION DETAILS FOR COMBINATION MEDIA FILTER /HAZARDOUS SPILL BASINS 2 THROUGH 7, AND 9" SEE SHEET 2D-3  
 FOR "TRASH RACKS, CLEANOUT, AND PERIMETER DRAIN DETAILS" SEE SHEET 2D-7  
 FOR SLUICE GATE DETAILS SEE MANUFACTURER'S DIMENSIONS AND SPECIFICATIONS

MINIMUM DIMENSIONS FOR COMBINATION MEDIA FILTER /HAZARDOUS SPILL BASIN DRAWDOWN STRUCTURES											
BASIN	STATION	STRUCTURE NUMBER	TOP ELEVATION MEDIA FILTER	TOP ELEVATION CONTROL STRUCTURE	BASIN DEPTH (D)	MEDIA FILTER + AGGREGATE DEPTH (M)	ANTI-FLOTATION MATERIAL (F) THICKNESS	BOTTOM ELEVATION CONTROL STRUCTURE	DIMENSIONS CONTROL STRUCTURE (W x L x H)	DIAMETER OUTLET PIPE (P) (SEE NOTE 5)	INVERT ELEVATION OUTLET PIPE (P)
2	-L- 348+38 (RT)	1101	805.00	807.50	2.5'	3.0'	0.90'	800.60	4' x 4' x 5.5'	24"	802.00
3	-L- 353+98 (RT)	1136	806.00	808.00	2.0'	3.1'	0.70'	801.70	4' x 4' x 5.1'	18"	802.90
4	-L- 367+10 (RT)	1249	762.50	765.00	2.5'	3.1'	0.90'	758.00	4' x 4' x 5.6'	24"	759.40
5	-L- 377+80 (LT)	1317	797.00	799.50	2.5'	3.0'	0.90'	792.60	4' x 4' x 5.5'	24"	794.00
6	-L- 387+06 (LT)	1361	779.50	782.50	3.0'	3.1'	1.1'	774.80	4' x 4' x 6.1'	30"	776.40
7	-L- 393+12 (LT)	1497	796.00	799.00	3.0'	3.11'	1.1'	791.29	4' x 4' x 6.11'	30"	792.89
9	-Y4RPA- 13+59 (RT)	1504	803.50	806.50	3.0'	3.17'	1.1'	798.73	4' x 4' x 6.17'	30"	800.33