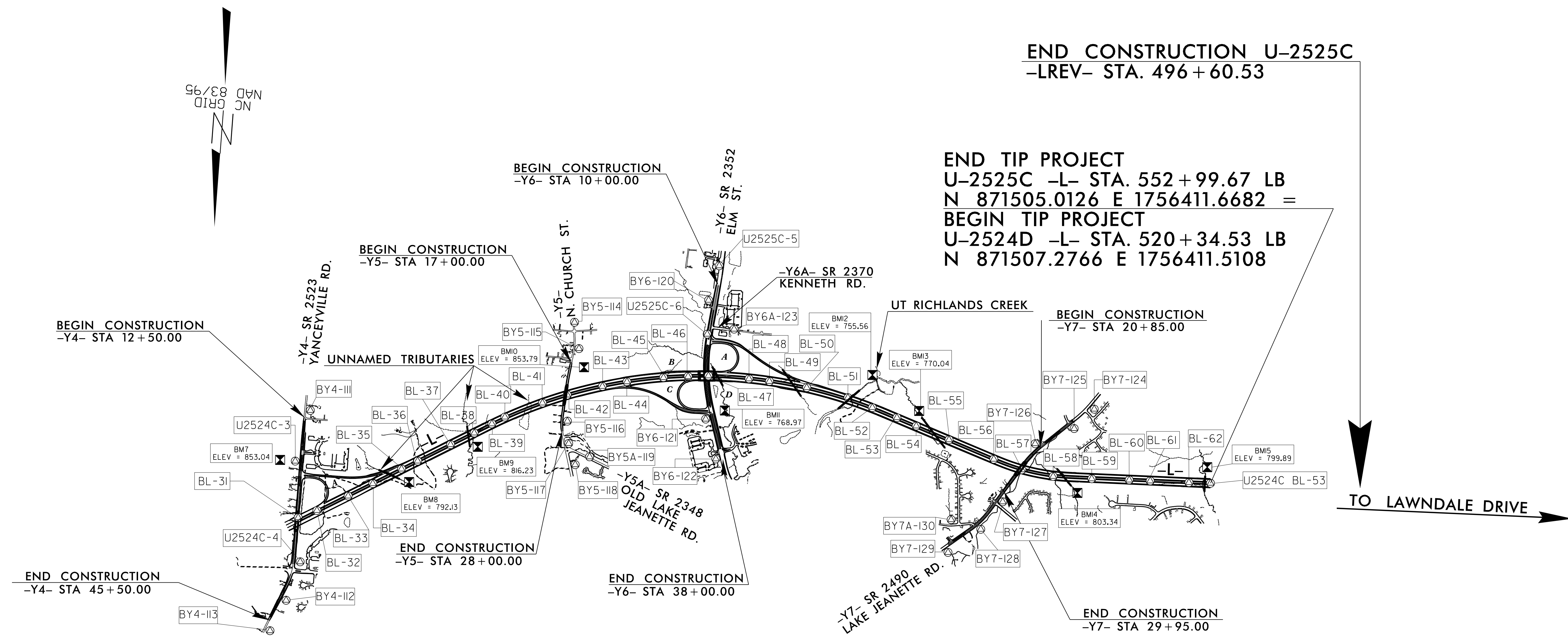


U-2525C SURVEY CONTROL SHEET



END CONSTRUCTION U-2525C
-LREV- STA. 496 + 60.53

END TIP PROJECT
U-2525C -L- STA. 552 + 99.67 LB
N 871505.0126 E 1756411.6682 =
BEGIN TIP PROJECT
U-2524D -L- STA. 520 + 34.53 LB
N 871507.2766 E 1756411.5108

TO LAWNDALE DRIVE →

NOTES

1. THE SITE CALIBRATION SHOWN IS BASED UPON A NETWORK TIED TO THE HARN (HIGH ACCURACY REFERENCE NETWORK) NAD 83/95 ADJUSTMENT. THIS CALIBRATION WILL ALLOW THE END USER TO WORK WITHIN THE SAME COORDINATE SYSTEM WHEN USING RTK (REAL-TIME KINEMATIC) GPS AND A LOCAL BASE STATION. IF ANOTHER SYSTEM SUCH AS VRS (VIRTUAL REFERENCE SYSTEM) IS USED, ADDITIONAL FIELD TIES MAY BE NEEDED TO REDUCE POSSIBLE ERRORS OR BIASES.
2. THE CONTROL DATA FOR THIS PROJECT CAN BE FOUND ELECTRONICALLY BY SELECTING PROJECT CONTROL DATA AT:
[HTTP://WWW.NCDOT.STATE.NC.US/PRECONSTRUCT/HIGHWAY/LOCATION/PROJECT/](http://www.ncdot.state.nc.us/preconstruct/highway/location/project/)

THE FILES TO BE FOUND ARE AS FOLLOWS:
 U2525C_LS_GPSCALIB_151229.HTML
 U2525C_LS_WGS84_151229.TXT
 U2525C_LS_LOCAL_151229.TXT
 U2525C_LS_CONTROL_151229.TXT

THE WGS84 AND LOCAL FILES ARE COMMA DELIMITED AND CAN BE USED TO REPRODUCE THE SITE CALIBRATION FOR THE END USER'S GPS EQUIPMENT. IF FURTHER INFORMATION IS NEEDED, PLEASE CONTACT THE LOCATION AND SURVEYS UNIT.

PROJECT CONTROL ESTABLISHED USING GLOBAL POSITIONING SYSTEM. NETWORK ESTABLISHED FROM EXISTING MONUMENTATION.

DATUM DESCRIPTION

THE LOCALIZED COORDINATE SYSTEM DEVELOPED FOR THIS PROJECT IS BASED ON THE STATE PLANE COORDINATES ESTABLISHED BY NGS FOR MONUMENT "WYRICK"
 WITH NAD 83/95 STATE PLANE GRID COORDINATES OF
 NORTHING: 886491.0682(±) EASTING: 1771530.6138(±)
 ELEVATION: 800.91(±)
 THE AVERAGE COMBINED GRID FACTOR USED ON THIS PROJECT (GROUND TO GRID) IS: 0.99995649
 THE N.C. LAMBERT GRID BEARING AND LOCALIZED HORIZONTAL GROUND DISTANCE FROM "WYRICK" TO -L- STATION 249+73.00 IS
 S 40°01'04" E 20,269.38
 ALL LINEAR DIMENSIONS ARE LOCALIZED HORIZONTAL DISTANCES
 VERTICAL DATUM USED IS NAVD 88

NOTE: DRAWING NOT TO SCALE