

**This electronic collection of documents is provided  
for the convenience of the user  
and is Not a Certified Document –**

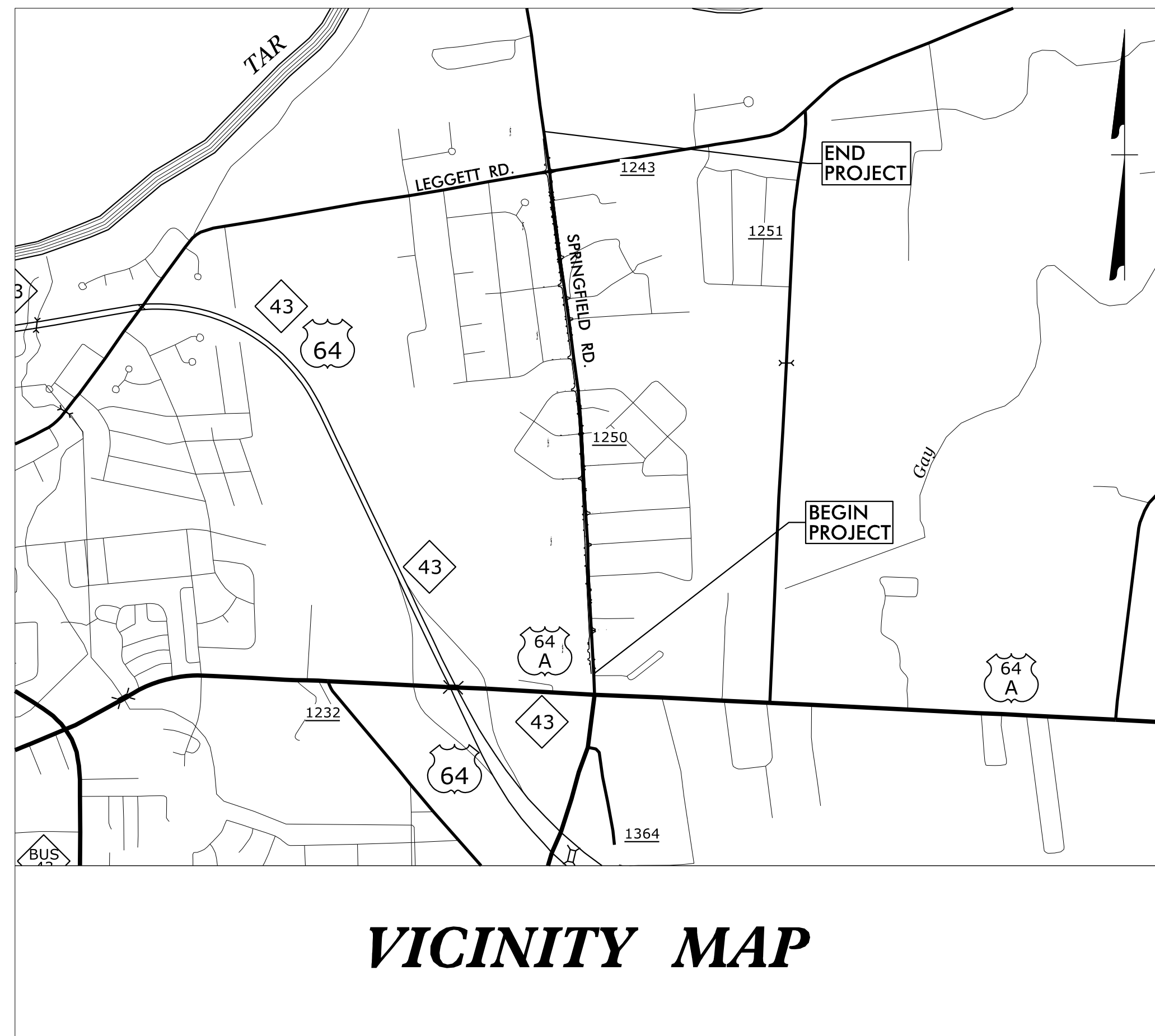
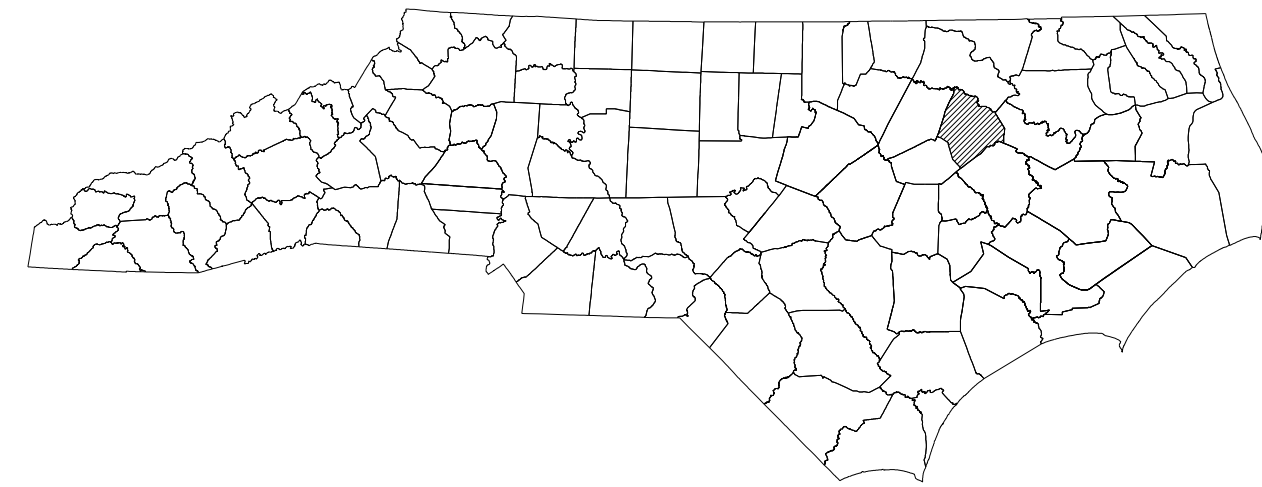
**The documents contained herein were originally issued  
and sealed by the individuals whose names and license  
numbers appear on each page, on the dates appearing  
with their signature on that page.**

**This file or an individual page  
shall not be considered a certified document.**

STATE OF NORTH CAROLINA  
DIVISION OF HIGHWAYS

**TRANSPORTATION MANAGEMENT PLAN**

**EDGECOMBE COUNTY**



**VICINITY MAP**

SHEET NO.	TITLE
TMP-1	TITLE SHEET, VICINITY MAP AND INDEX OF SHEETS
TMP-1A	LIST OF APPLICABLE ROADWAY STANDARD DRAWINGS, AND LEGEND
TMP-2A-2B	TRANSPORTATION OPERATIONS PLAN: (GENERAL NOTES)
TMP-3	TEMPORARY TRAFFIC CONTROL PHASING
TMP-4-9	TEMPORARY TRAFFIC CONTROL PHASE I DETAIL
TMP-10-12	OFF SITE DETOUR ROUTES

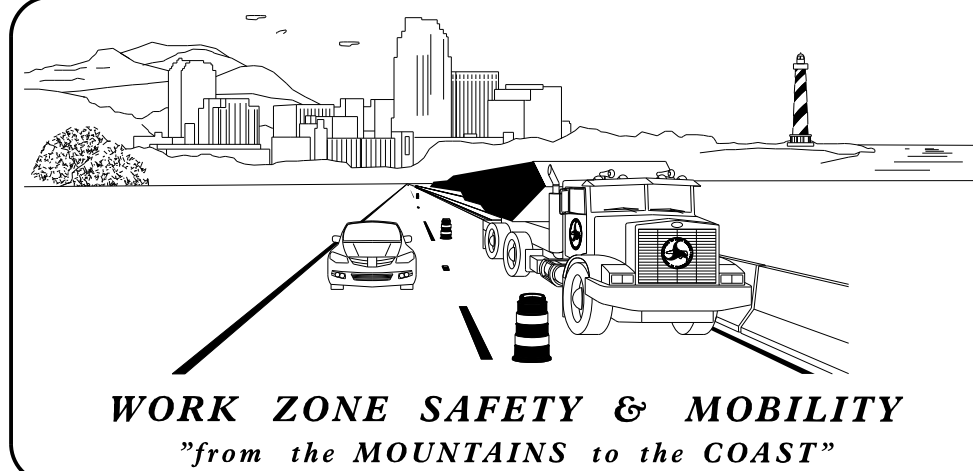
SHEET NO.  
TMP-1

**U-4762**

**TIP PROJECT:**

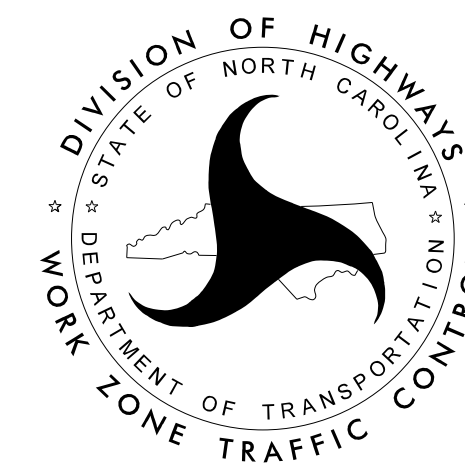


940 Main Campus Drive, Suite 500  
Raleigh, NC 27606  
P: (919) 829-0328



**N.C.D.O.T. WORK ZONE TRAFFIC CONTROL**  
1561 MAIL SERVICE CENTER (MSC) RALEIGH, NC 27699-1561  
750 N. GREENFIELD PARKWAY, GARNER, NC 27529 (DELIVERY)  
PHONE: (919) 773-2800 FAX: (919) 771-2745

JOSEPH HUMMER, P.E. STATE TRAFFIC MANAGEMENT ENGINEER  
STEVE KITE, P.E. TRAFFIC CONTROL PROJECT ENGINEER  
MATT SPRINGER, P.E. TRAFFIC CONTROL PROJECT DESIGN ENGINEER  
TRAFFIC CONTROL DESIGN ENGINEER



JOSEPH LEWIS, PE  
TRAFFIC CONTROL  
PROJECT ENGINEER

A. MATTHEW THIGPEN, PE  
TRAFFIC CONTROL  
PROJECT DESIGN ENGINEER

APPROVED: \_\_\_\_\_  
DATE: \_\_\_\_\_

SEAL



7/25/2017 \\vha\pro\raleigh\38369.06 NCDOT-CALYX-T06(U-4762)\cod\te\plan\set\Traffic\Traffic Control\U-4762\_fc.tmp01.dgn User: mthigpen

## ROADWAY STANDARD DRAWINGS

THE FOLLOWING ROADWAY STANDARDS AS SHOWN IN "ROADWAY STANDARD DRAWINGS" - PROJECT SERVICES UNIT - N.C. DEPARTMENT OF TRANSPORTATION - RALEIGH, N.C., DATED JANUARY 2012 ARE APPLICABLE TO THIS PROJECT AND BY REFERENCE HEREBY ARE CONSIDERED A PART OF THESE PLANS:

<u>STD. NO.</u>	<u>TITLE</u>
1101.01	WORK ZONE ADVANCE WARNING SIGNS
1101.02	TEMPORARY LANE CLOSURES
1101.04	TEMPORARY SHOULDER CLOSURES
1101.11	TRAFFIC CONTROL DESIGN TABLES
1110.01	STATIONARY WORK ZONE SIGNS
1110.02	PORTABLE WORK ZONE SIGNS
1130.01	DRUM
1135.01	CONES
1145.01	BARRICADES
1150.01	FLAGGING DEVICES
1180.01	SKINNY-DRUM
1205.01	PAVEMENT MARKINGS - LINE TYPES AND OFFSETS
1205.02	PAVEMENT MARKINGS - TWO-LANE AND MULTI-LANE ROADWAYS
1205.04	PAVEMENT MARKINGS - INTERSECTIONS
1205.05	PAVEMENT MARKINGS - TURN LANES
1205.09	PAVEMENT MARKINGS - PAINTED ISLANDS
1250.01	RAISED PAVEMENT MARKERS - INSTALLATION SPACING
1251.01	RAISED PAVEMENT MARKERS - PERMANENT AND TEMPORARY

## LEGEND

### GENERAL

- DIRECTION OF TRAFFIC FLOW
- DIRECTION OF PEDESTRIAN TRAFFIC FLOW
- EXIST. PVMT.
- NORTH ARROW
- PROPOSED PVMT.
- TEMP. SHORING (LOCATION PURPOSES ONLY)

WORK AREA

REMOVAL

### PAVEMENT MARKINGS

- EXISTING LINES
- TEMPORARY LINES

### TRAFFIC CONTROL DEVICES

- BARRICADE (TYPE III)
- CONE
- DRUM    SKINNY DRUM    TUBULAR MARKER
- TEMPORARY CRASH CUSHION
- FLASHING ARROW BOARD
- FLAGGER
- LAW ENFORCEMENT
- TRUCK MOUNTED ATTENUATOR (TMA)
- CHANGEABLE MESSAGE SIGN

### TEMPORARY SIGNING

- PORTABLE SIGN
- STATIONARY SIGN
- STATIONARY OR PORTABLE SIGN

### PAVEMENT MARKERS

- CRYSTAL/CRYSTAL
- CRYSTAL/RED
- YELLOW/YELLOW

### PAVEMENT MARKING SYMBOLS

- PAVEMENT MARKING SYMBOLS

APPROVED: _____ DATE: _____		
<h3>ROADWAY STANDARD DRAWINGS &amp; LEGEND</h3>		

4/25/2017 \\vhb\pro\raleigh\38369.06 NCDOT-CALYX-T06(U-4762)\cad\te\planset\Traffic\Traffic Control\U-4762-fo\_tmp01a.dgn User:tmthibodeau

# GENERAL NOTES

CHANGES MAY BE REQUIRED WHEN PHYSICAL DIMENSIONS IN THE DETAIL DRAWINGS, STANDARD DETAILS, AND ROADWAY DETAILS ARE NOT ATTAINABLE TO MEET FIELD CONDITIONS OR RESULT IN DUPLICATE OR UNDESIRED OVERLAPPING OF DEVICES. MODIFICATION MAY INCLUDE: MOVING, SUPPLEMENTING, COVERING, OR REMOVAL OF DEVICES AS DIRECTED BY THE ENGINEER.

THE FOLLOWING GENERAL NOTES APPLY AT ALL TIMES FOR THE DURATION OF THE CONSTRUCTION PROJECT EXCEPT WHEN OTHERWISE NOTED IN THE PLAN OR DIRECTED BY THE ENGINEER.

### TIME RESTRICTIONS

A) DO NOT CLOSE OR NARROW TRAVEL LANES AS FOLLOWS:

ROAD NAME	DAY AND TIME RESTRICTIONS
ALL ROADS	MONDAY THRU FRIDAY 6:00 A.M. TO 9:00 A.M. AND 4:00 P.M. TO 7:00 P.M.

B) DO NOT CLOSE OR NARROW TRAVEL LANES DURING HOLIDAYS AND SPECIAL EVENTS AS FOLLOWS:

ROAD NAME
ALL ROADS

#### HOLIDAY

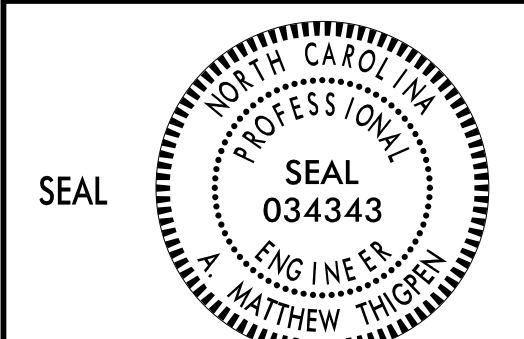
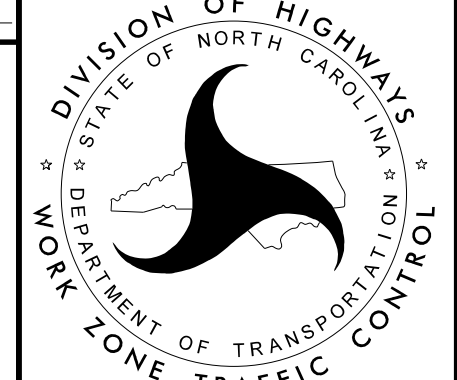
1. FOR ANY UNEXPECTED OCCURRENCE THAT CREATES UNUSUALLY HIGH TRAFFIC VOLUMES, AS DIRECTED BY THE ENGINEER.
2. FOR NEW YEAR'S, BETWEEN THE HOURS OF 6:00 A.M. DECEMBER 31st TO 7:00 P.M. JANUARY 3RD. IF NEW YEAR'S DAY IS ON A FRIDAY, SATURDAY, SUNDAY, OR MONDAY THEN UNTIL 7:00 P.M. THE FOLLOWING TUESDAY.
3. FOR EASTER, BETWEEN THE HOURS OF 6:00 A.M. THURSDAY AND 7:00 P.M. TUESDAY.
4. FOR MEMORIAL DAY, BETWEEN THE HOURS OF 6:00 A.M. FRIDAY TO 7:00 P.M. WEDNESDAY.
5. FOR INDEPENDENCE DAY, BETWEEN THE HOURS OF 6:00 A.M. THE DAY BEFORE INDEPENDENCE DAY AND 7:00 P.M. THE DAY AFTER INDEPENDENCE DAY.

IF INDEPENDENCE DAY IS ON A FRIDAY, SATURDAY, SUNDAY OR MONDAY THEN BETWEEN THE HOURS OF 6:00 A.M. THE THURSDAY BEFORE INDEPENDENCE DAY AND 7:00 P.M. THE TUESDAY AFTER INDEPENDENCE DAY.

6. FOR LABOR DAY, BETWEEN THE HOURS OF 6:00 A.M. FRIDAY TO 7:00 P.M. WEDNESDAY.
7. FOR THANKSGIVING DAY, BETWEEN THE HOURS OF 6:00 A.M. TUESDAY AND 7:00 P.M. MONDAY.
8. FOR CHRISTMAS, BETWEEN THE HOURS OF 6:00 A.M. THE FRIDAY BEFORE THE WEEK OF CHRISTMAS DAY AND 7:00 P.M. THE FOLLOWING TUESDAY AFTER THE WEEK OF CHRISTMAS.

### LANE AND SHOULDER CLOSURE REQUIREMENTS

- C) REMOVE LANE CLOSURE DEVICES FROM THE LANE WHEN WORK IS NOT BEING PERFORMED BEHIND THE LANE CLOSURE OR WHEN A LANE CLOSURE IS NO LONGER NEEDED OR AS DIRECTED BY THE ENGINEER.
  - D) WHEN PERSONNEL AND/OR EQUIPMENT ARE WORKING WITHIN 15 FT OF AN OPEN TRAVEL LANE, CLOSE THE NEAREST OPEN SHOULDER USING ROADWAY STANDARD DRAWING NO. 1101.04 UNLESS THE WORK AREA IS PROTECTED BY BARRIER OR GUARDRAIL OR A LANE CLOSURE IS INSTALLED.
  - E) WHEN PERSONNEL AND/OR EQUIPMENT ARE WORKING ON THE SHOULDER ADJACENT TO AN UNDIVIDED FACILITY AND WITHIN 5 FT OF AN OPEN TRAVEL LANE, CLOSE THE NEAREST OPEN TRAVEL LANE USING ROADWAY STANDARD DRAWING NO. 1101.02 UNLESS THE WORK AREA IS PROTECTED BY BARRIER OR GUARDRAIL.
- WHEN PERSONNEL AND/OR EQUIPMENT ARE WORKING ON THE SHOULDER ADJACENT TO A DIVIDED FACILITY AND WITHIN 10 FT OF AN OPEN TRAVEL LANE, CLOSE THE NEAREST OPEN TRAVEL LANE USING ROADWAY STANDARD DRAWING NO. 1101.02 UNLESS THE WORK AREA IS PROTECTED BY BARRIER OR GUARDRAIL.
- F) WHEN PERSONNEL AND/OR EQUIPMENT ARE WORKING WITHIN A LANE OF TRAVEL OF AN UNDIVIDED OR DIVIDED FACILITY, CLOSE THE LANE ACCORDING TO THE TRANSPORTATION MANAGEMENT PLANS, ROADWAY STANDARD DRAWINGS, OR AS DIRECTED BY THE ENGINEER. CONDUCT THE WORK SO THAT ALL PERSONNEL AND/OR EQUIPMENT REMAIN WITHIN THE CLOSED TRAVEL LANE.
  - G) DO NOT WORK SIMULTANEOUSLY WITHIN 15 FT ON BOTH SIDES OF AN OPEN TRAVELWAY, RAMP, OR LOOP WITHIN THE SAME LOCATION UNLESS PROTECTED WITH GUARDRAIL OR BARRIER.
  - H) DO NOT INSTALL MORE THAN ONE LANE CLOSURE IN ANY ONE DIRECTION ON SR 1250.
  - I) PROVIDE TRAFFIC CONTROL FOR APPROPRIATE LANE CLOSURES FOR SURVEYING DONE BY THE DEPARTMENT.

APPROVED: _____	DATE: _____			<b>TRANSPORTATION OPERATIONS PLAN: (GENERAL NOTES)</b>
-----------------	-------------	---	---	--

# GENERAL NOTES CONTINUED

## PAVEMENT EDGE DROP OFF REQUIREMENTS

- J) BACKFILL AT A 6:1 SLOPE UP TO THE EDGE AND ELEVATION OF EXISTING PAVEMENT IN AREAS ADJACENT TO AN OPENED TRAVEL LANE THAT HAS AN EDGE OF PAVEMENT DROP-OFF AS FOLLOWS:  
BACKFILL DROP-OFFS THAT EXCEED 2 INCHES ON ROADWAYS WITH POSTED SPEED LIMITS OF 45 MPH OR GREATER.

BACKFILL DROP-OFFS THAT EXCEED 3 INCHES ON ROADWAYS WITH POSTED SPEED LIMITS LESS THAN 45 MPH.

BACKFILL WITH SUITABLE COMPACTED MATERIAL, AS APPROVED BY THE ENGINEER, AT NO EXPENSE TO THE DEPARTMENT.

- K) DO NOT EXCEED A DIFFERENCE OF 2 INCHES IN ELEVATION BETWEEN OPEN LANES OF TRAFFIC FOR NOMINAL LIFTS OF 1.5 INCHES. INSTALL ADVANCE WARNING "UNEVEN LANES" SIGNS (W8-11) 500 FT IN ADVANCE AND A MINIMUM OF EVERY HALF MILE THROUGHOUT THE UNEVEN AREA.

## TRAFFIC PATTERN ALTERATIONS

- L) NOTIFY THE ENGINEER TWENTY ONE (21) CALENDAR DAYS PRIOR TO ANY TRAFFIC PATTERN ALTERATION.

## SIGNING

- M) INSTALL ADVANCE WORK ZONE WARNING SIGNS WHEN WORK IS WITHIN 40 FT FROM THE EDGE OF TRAVEL LANE AND NO MORE THAN THREE (3) DAYS PRIOR TO THE BEGINNING OF CONSTRUCTION.
- N) ENSURE ALL NECESSARY SIGNING IS IN PLACE PRIOR TO ALTERING ANY TRAFFIC PATTERN.
- O) INSTALL BLACK ON ORANGE "DIP" SIGNS (W8-2) AND/OR "BUMP" SIGNS (W8-1) 500 FT IN ADVANCE OF THE UNEVEN AREA, OR AS DIRECTED BY THE ENGINEER.

## TRAFFIC CONTROL DEVICES

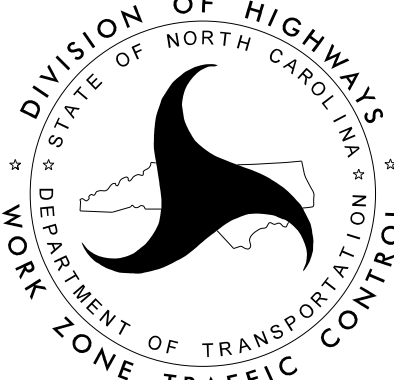

- P) WHEN LANE CLOSURES ARE NOT IN EFFECT SPACE CHANNELIZING DEVICES IN WORK AREAS NO GREATER IN FEET THAN TWICE THE POSTED SPEED LIMIT (MPH) EXCEPT, 10 FT ON-CENTER IN RADII, AND 3 FT OFF THE EDGE OF AN OPEN TRAVELWAY. REFER TO STANDARD SPECIFICATIONS FOR ROADS AND STRUCTURES SECTIONS 1130 (DRUMS), 1135 (CONES) AND 1180 (SKINNY DRUMS) FOR ADDITIONAL REQUIREMENTS.
- Q) PLACE TYPE III BARRICADES, WITH "ROAD CLOSED" SIGN R11-2 ATTACHED, OF SUFFICIENT LENGTH TO CLOSE ENTIRE ROADWAY.
- R) PLACE ADDITIONAL SETS OF THREE CHANNELIZING DEVICES (DRUMS) PERPENDICULAR TO THE EDGE OF TRAVELWAY ON 500 FT CENTERS WHEN UNOPENED LANES ARE CLOSED TO TRAFFIC.

## PAVEMENT MARKINGS AND MARKERS

- S) INSTALL TEMPORARY PAVEMENT MARKINGS AND TEMPORARY PAVEMENT MARKERS ON INTERIM LAYERS OF PAVEMENT AS FOLLOWS:

ROAD NAME	MARKING	MARKER
ALL ROADS	PAINT	TEMPORARY RAISED

- T) PLACE ONE APPLICATION OF PAINT FOR TEMPORARY TRAFFIC PATTERNS. PLACE A SECOND APPLICATION OF PAINT SIX MONTHS AFTER THE INITIAL APPLICATION AND EVERY 6 MONTHS AS DIRECTED BY THE ENGINEER.
- U) TIE PROPOSED PAVEMENT MARKING LINES TO EXISTING PAVEMENT MARKING LINES.
- V) REMOVE/REPLACE ANY CONFLICTING/DAMAGED PAVEMENT MARKINGS AND MARKERS BY THE END OF EACH DAY'S OPERATION.

APPROVED: _____	DATE: _____		<b>TRANSPORTATION OPERATIONS PLAN: (GENERAL NOTES)</b>
			

# PHASING

THE CONTRACTOR SHALL MAINTAIN ACCESS TO ALL EXISTING DRIVEWAYS AS DIRECTED BY THE ENGINEER.

REPLACE MARKINGS AND RETURN TRAFFIC TO THE CURRENT TRAFFIC PATTERN AT THE END OF EACH WORK PERIOD UNLESS OTHERWISE NOTED IN THE PHASING OR DIRECTED BY THE ENGINEER.

WEDGE EXISTING PAVEMENT IN SUCH A MANNER THAT PONDING OF WATER WILL NOT OCCUR IN THE TRAVEL LANES.

COMPLETE WEDGING AND WIDENING SIMULTANEOUSLY SO THAT CURRENT TRAFFIC PATTERNS, DROP-OFF REQUIREMENTS AND POSITIVE DRAINAGE ARE MAINTAINED.

## PHASE I

### STEP 1

INSTALL WORK ZONE ADVANCE WARNING SIGNS

### STEP 2

WHILE MAINTAINING TRAFFIC IN EXISTING PATTERN AND USING RSD 1101.02 (SHEET 1 OF 15), CONSTRUCT THE PROPOSED OUTSIDE PAVEMENT WIDENING (UP TO BUT NOT INCLUDING THE FINAL LAYER OF SURFACE COURSE) AND PROPOSED CURB & GUTTER (SEE SHEET TMP-4 THRU TMP-9).

- L- FROM STA 11+00 +/- TO 80+70 +/-
- Y2- FROM -L- TO STA 10+60 +/-
- Y3- FROM -L- TO STA 10+60 +/-
- Y4- FROM -L- TO STA 10+65 +/-
- Y5- FROM STA 11+95 +/- TO -L-
- Y9- FROM STA 11+80 +/- TO -L-
- Y10- FROM STA 11+25 +/- TO -L-
- Y11- FROM -L- TO STA 10+65 +/-
- Y12- FROM -L- TO STA 10+60 +/-
- Y13- FROM STA 11+85 +/- TO -L-
- Y14- FROM -L- TO STA 10+55 +/-
- Y15- FROM STA 12+15 +/- TO 14+05 +/-

CONSTRUCT PROPOSED DRAINAGE CROSS PIPES LESS THAN 42" AS FOLLOWS:

USE LANE CLOSURES (RSD NO. 1101.02, SHEET 1 OF 15) AS NECESSARY DURING SUCCESSIVE PERIODS.

PATCH PAVEMENT AND RESTORE TRAFFIC TO ITS PRIOR PATTERN BY THE END OF THE WORK PERIOD.

STEP 3 AND STEP 4 ROAD CLOSURES MAY NOT OCCUR AT THE SAME TIME.

STEP 3 AND STEP 4 MAY BE PERFORMED PRIOR TO COMPLETION OF STEP 2.

THE CONTRACTOR SHALL WORK IN A CONTINUOUS MANNER TO COMPLETE THE WORK REQUIRED IN PHASE I STEPS 3 AND 4 WITHIN A SINGLE WEEKEND PERIOD BETWEEN 7:00 PM FRIDAY TO 6:00 AM MONDAY. (SEE INTERMEDIATE CONTRACT TIME AND LIQUIDATED DAMAGES)

### STEP 3

USING RSD 1101.03, SHEETS 1 AND 2 OF 9, CLOSE -L- BETWEEN -Y2- AND -Y3- (SEE INSET ON TMP-5). DETOUR TRAFFIC ALONG ROUTES AS SHOWN ON TMP-11. CONSTRUCT 42" RCP-IV ACROSS -L- AT STA 26+85 +/- AS SHOWN ON TMP-5. REPAIR PAVEMENT AND ANY DAMAGED PAVEMENT MARKINGS. REOPEN -L- TO EXISTING TRAFFIC PATTERN.

### STEP 4

USING RSD 1101.03, SHEETS 1 AND 2 OF 9, CLOSE -L- BETWEEN -Y14- AND -Y15- (SEE INSET ON TMP-8). DETOUR TRAFFIC ALONG ROUTES AS SHOWN ON TMP-12. CONSTRUCT DOUBLE 54" RCP-IV ACROSS -L- AT STA 66+20 +/- AS SHOWN ON TMP-8. REPAIR PAVEMENT AND ANY DAMAGED PAVEMENT MARKINGS. REOPEN -L- TO EXISTING TRAFFIC PATTERN.

## PHASE II

WORK IN A CONTINUOUS MANNER TO COMPLETE THE WORK REQUIRED IN PHASE II STEP 1 AND SHIFT TRAFFIC TO PHASE II PATTERN IN A SINGLE WORK PERIOD. (SEE TMP-7 THRU TMP-9)

### STEP 1

USING ROADWAY STANDARD DRAWING 1101.02 (SHEET 1 OF 15), INSTALL TEMPORARY PAVEMENT MARKINGS, TRAFFIC CONTROL DEVICES AND SIGNING AND SHIFT TRAFFIC TO THE FINAL PATTERN.

### STEP 2

USING ROADWAY STANDARD DRAWING 1101.02 (SHEET 1 OF 15), PLACE THE FINAL LAYER OF SURFACE COURSE AND INSTALL TEMPORARY PAVEMENT MARKINGS AND MARKERS IN THE FINAL TRAFFIC PATTERN AS SHOWN IN THE FINAL PAVEMENT MARKING PLANS.

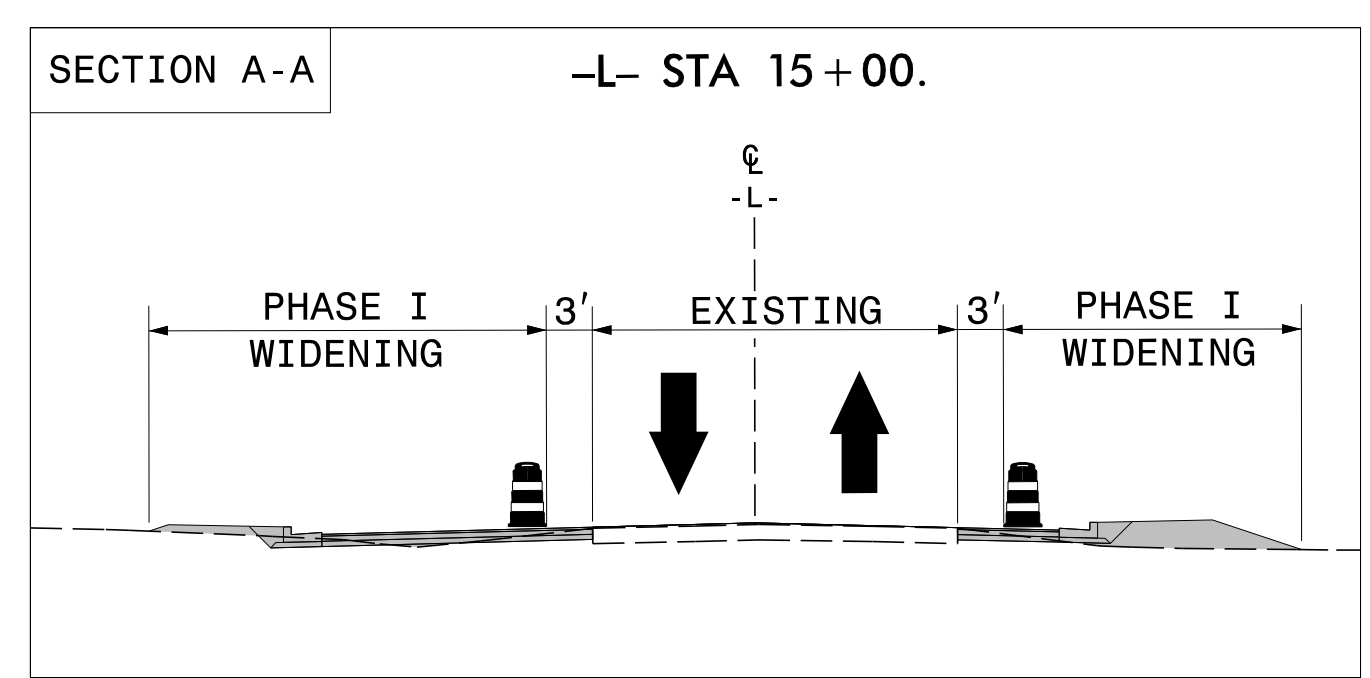
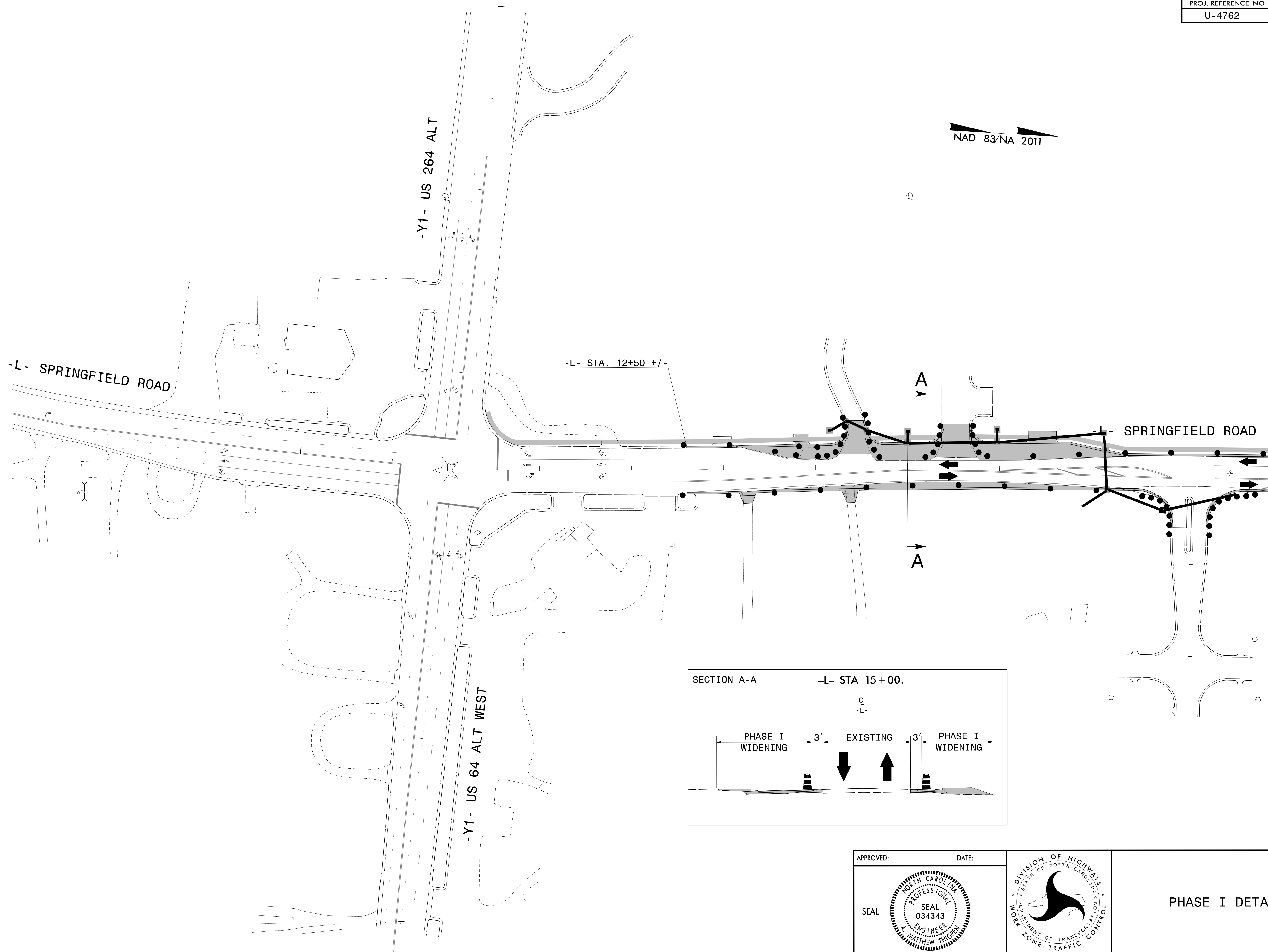
### STEP 3

USING ROADWAY STANDARD DRAWING 1101.02 (SHEET 1 OF 15), INSTALL FINAL PAVEMENT MARKINGS AND MARKERS AS SHOWN IN THE FINAL PAVEMENT MARKING PLANS.

### STEP 4

REMOVE ALL REMANING TRAFFIC CONTROL DEVICES.

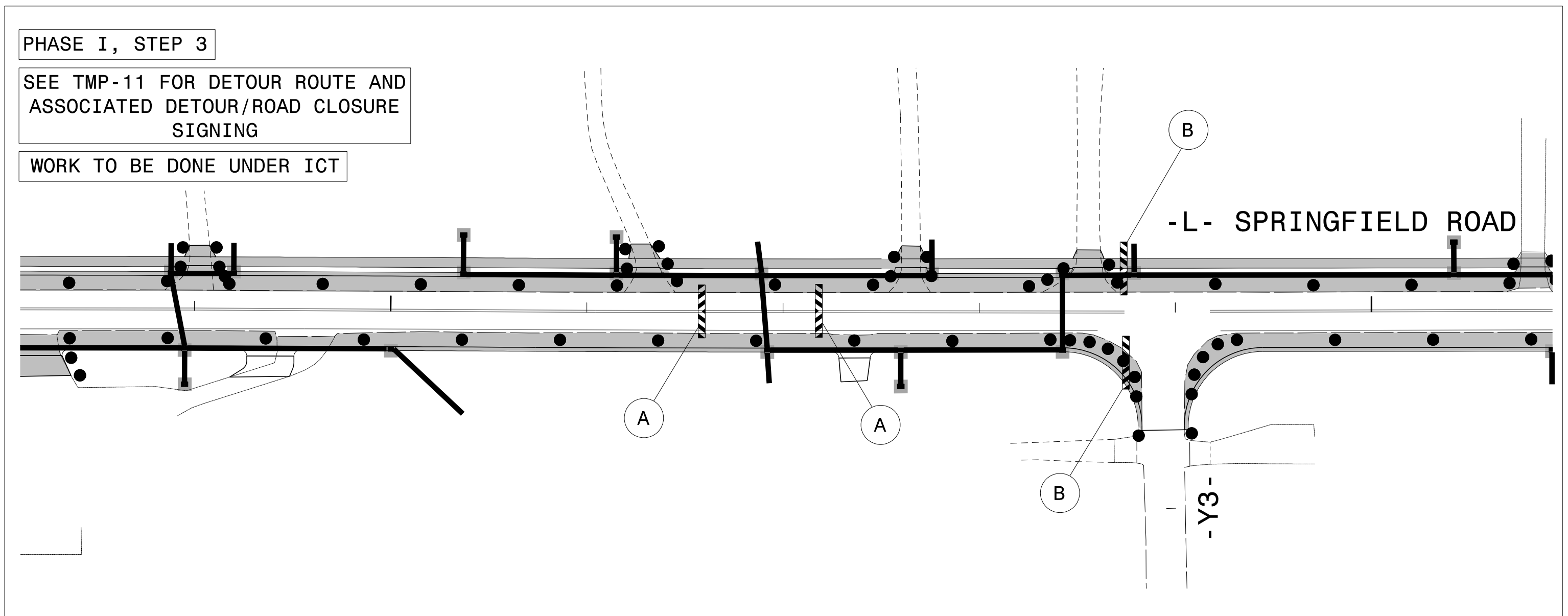
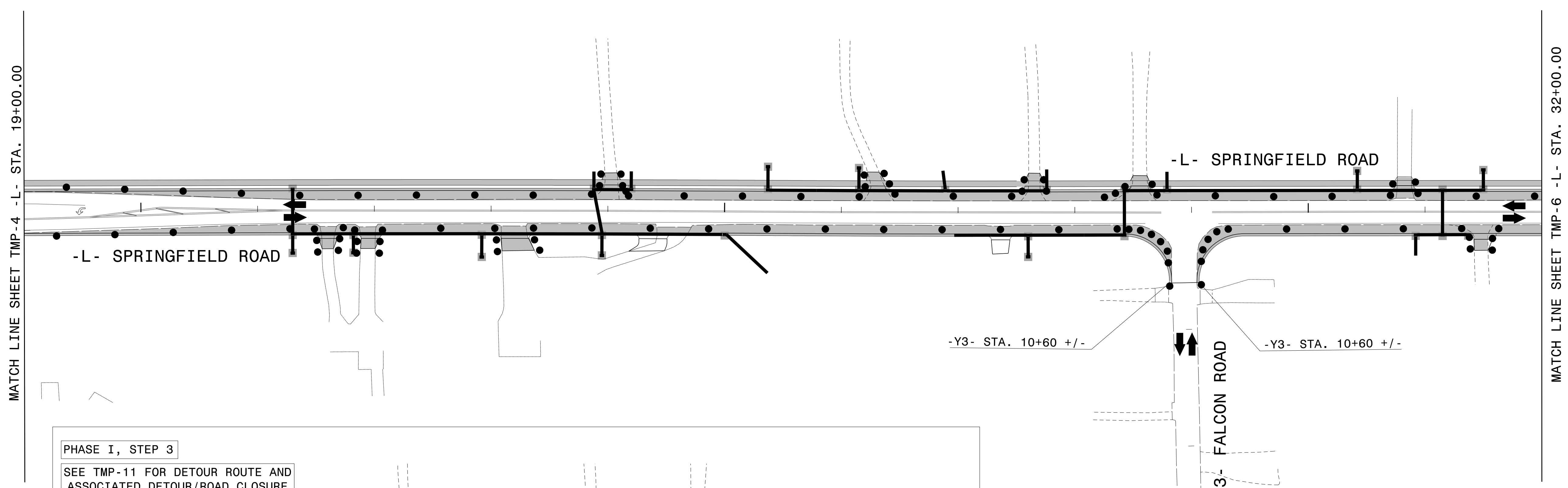
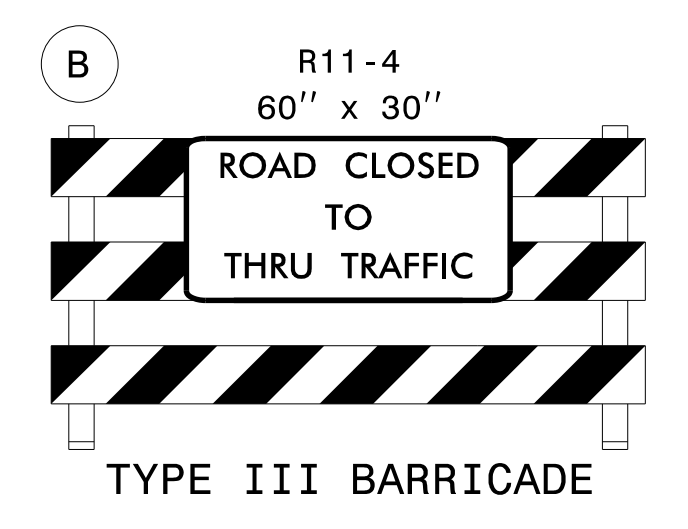
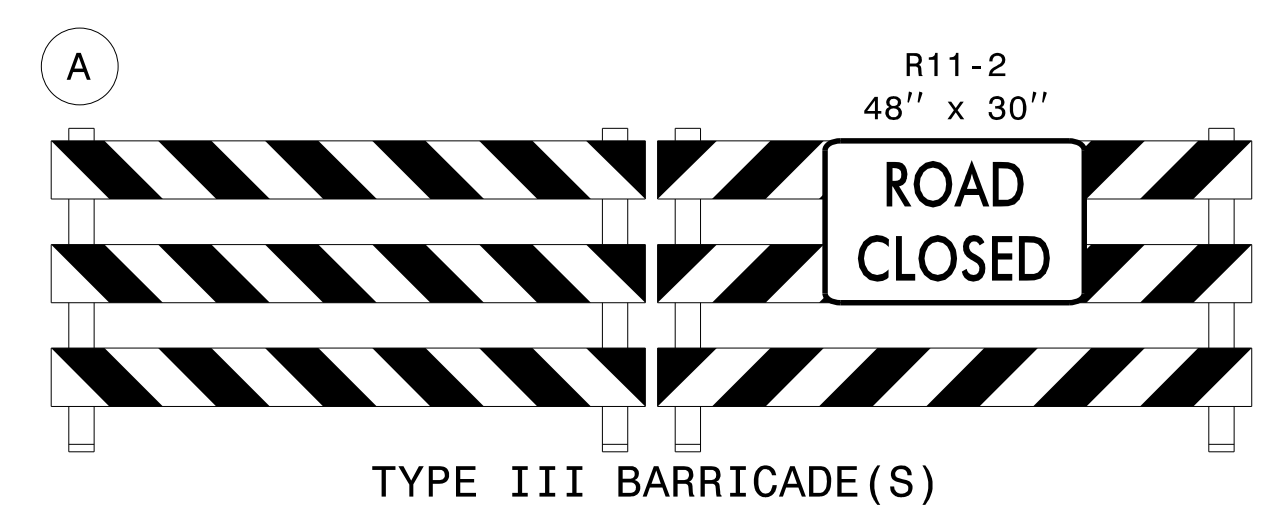
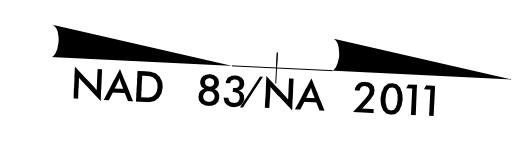
APPROVED: _____ DATE: _____		<h1>PHASING</h1>



MATCH LINE SHEET TMP-5 -L- STA. 19+00.00

4/25/2017  
 \\vhb\pro\raleigh\38369.06 NCDOT-CALYX-T06(U-4762)\cad\te\planset\Traffic\Control\U-4762-1c.tmp\_04.dgn  
 User: mthigben

APPROVED: _____ DATE: _____		<h3>PHASE I DETAIL</h3>

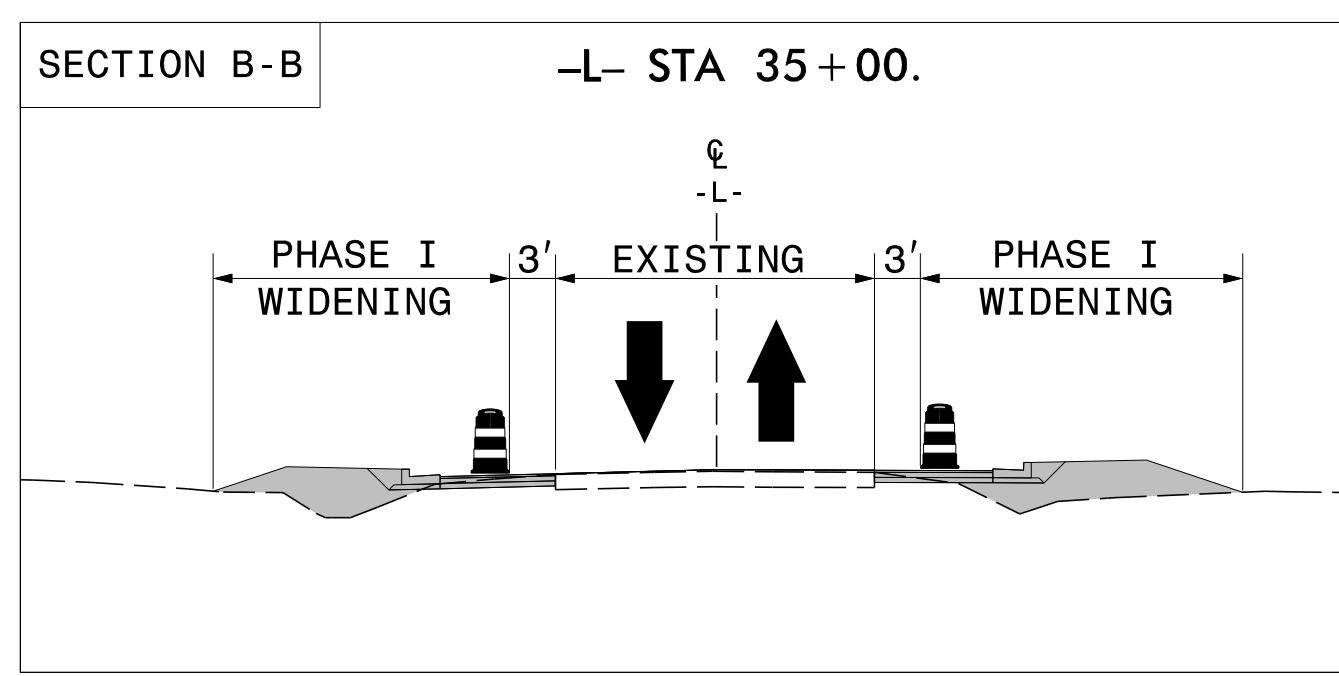
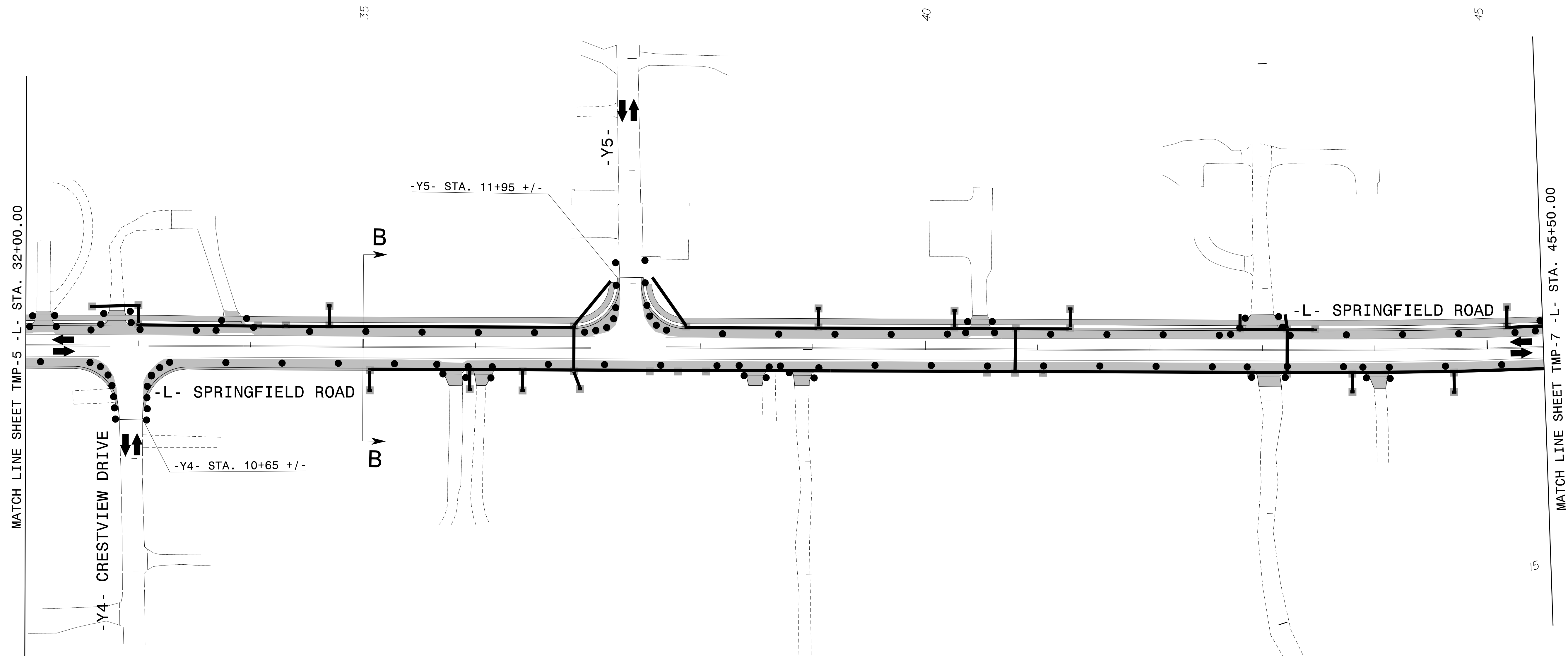


APPROVED:	DATE:			<p>PHASE I DETAIL</p>

4/25/2017  
 \\vhb\pro\raleigh\38369.06 NCDOT-CALYX-T06(U-4762)\cad\te\plan\Traffic Control\U-4762-1c-tmp\_05.dgn  
 User: mthigpen



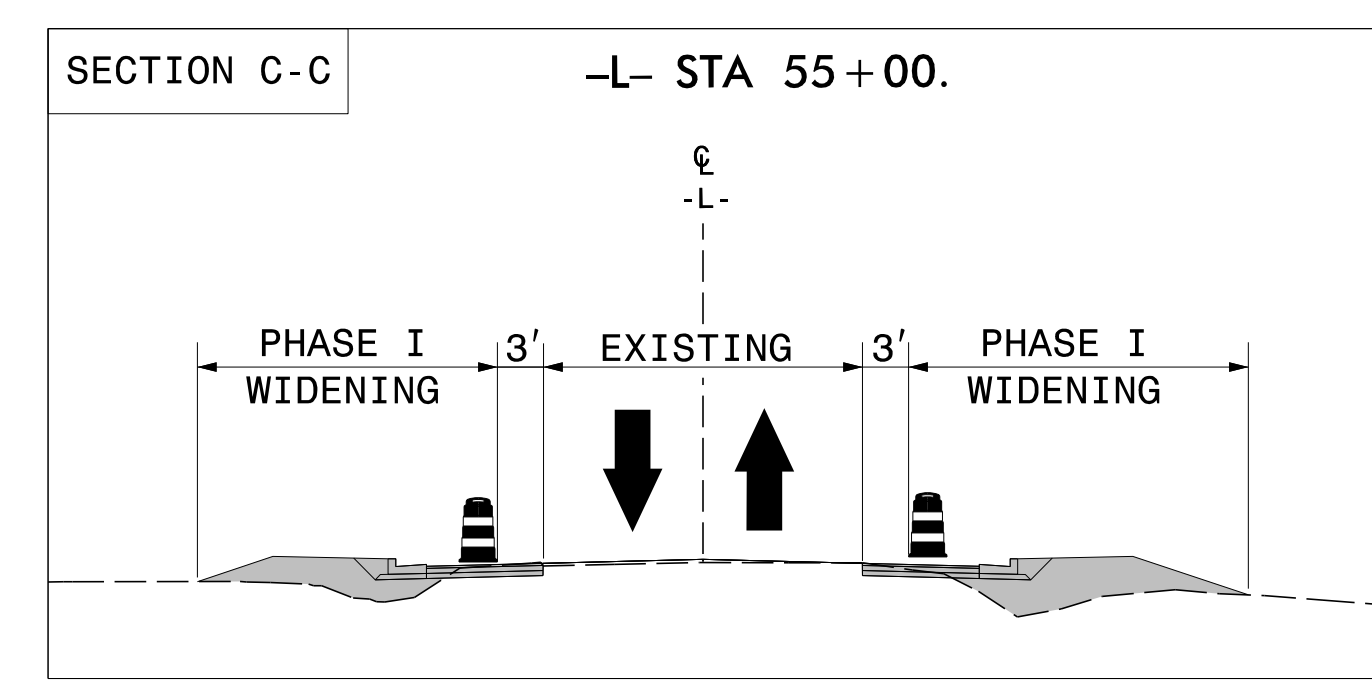
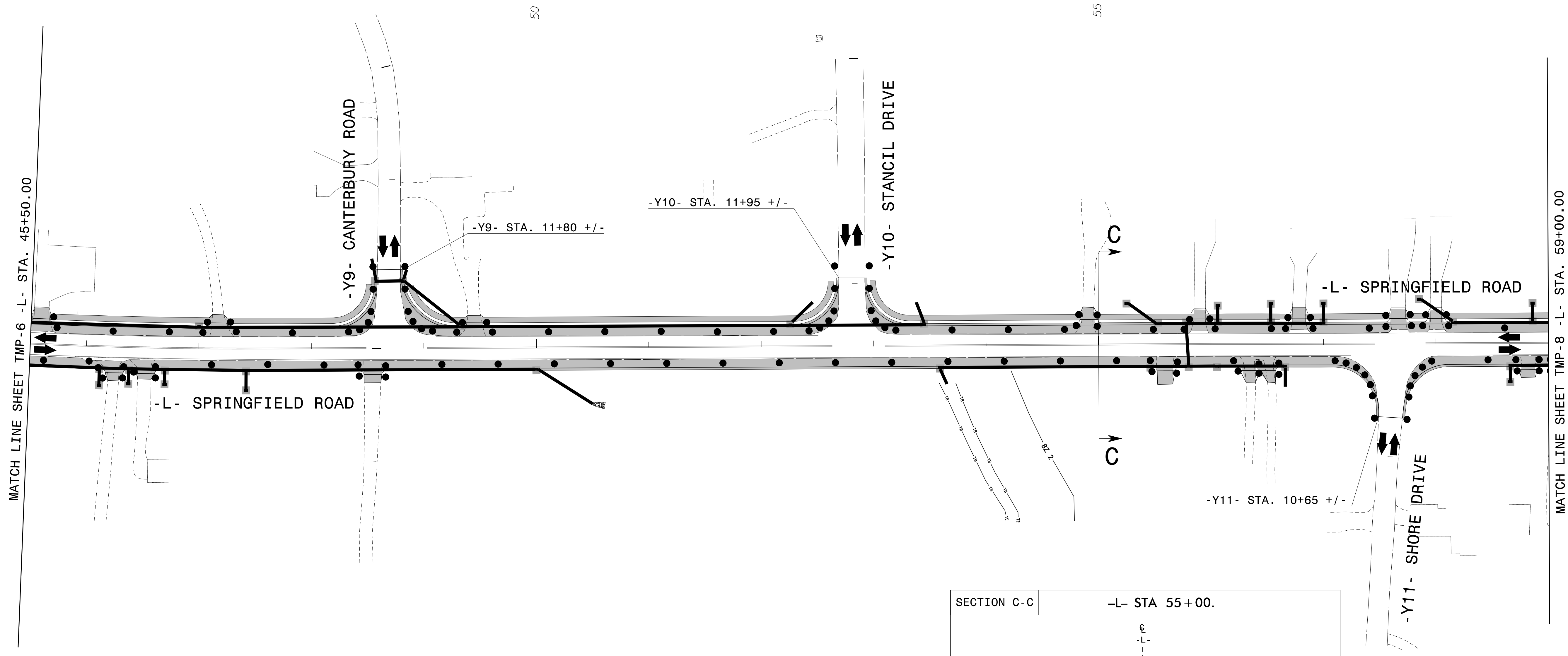
NAD 83/NA 2011



APPROVED: _____	DATE: _____		<p>PHASE I DETAIL</p>

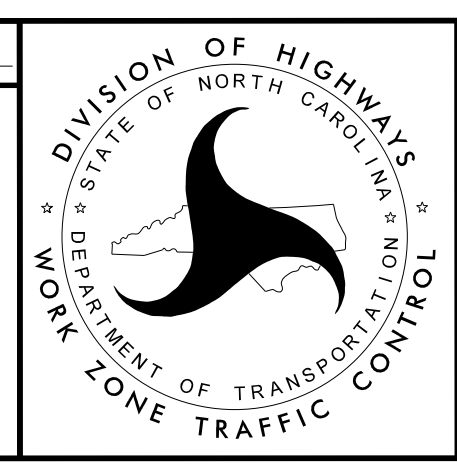
4/25/2017  
 \\vhb\pro\raleigh\38369.06 NCDOT-CALYX-T06(U-4762)\cad\te\planset\Traffic\Control\U-4762-1c.tmp\_06.dgn  
 User: mthigpen

NAD 83/NA 2011



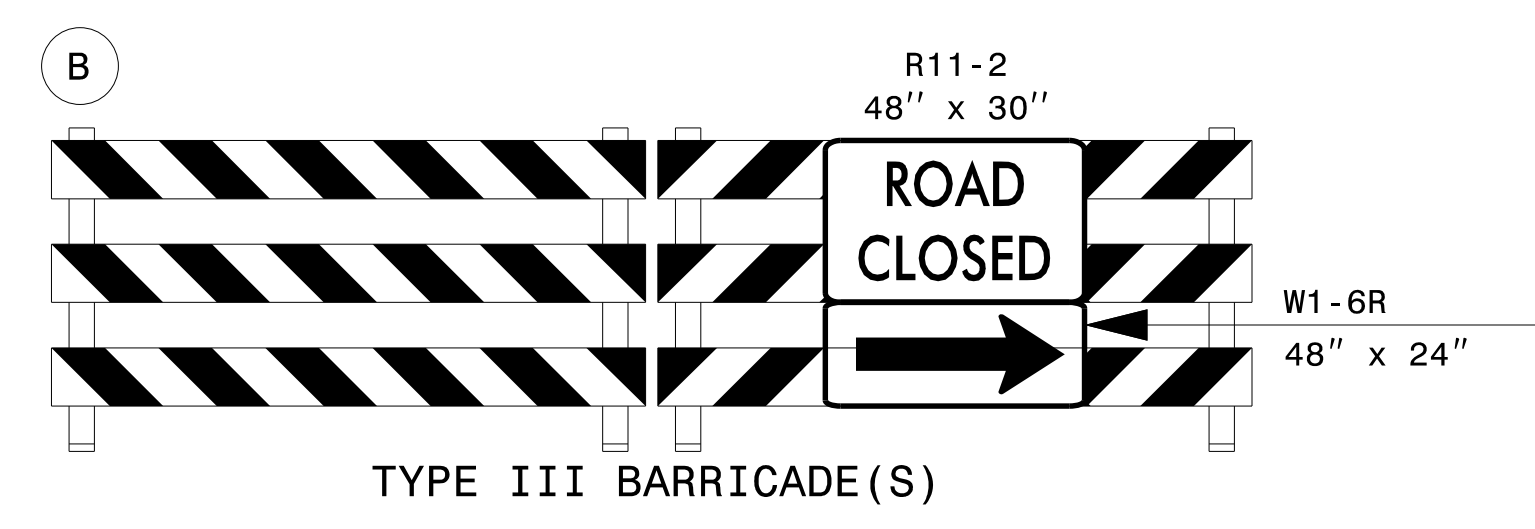
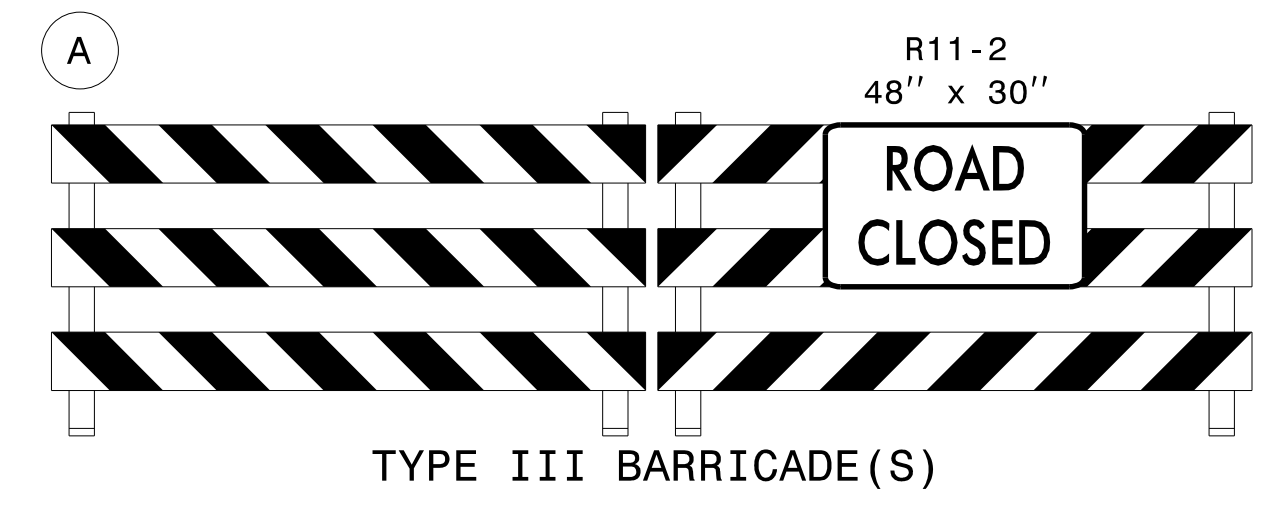
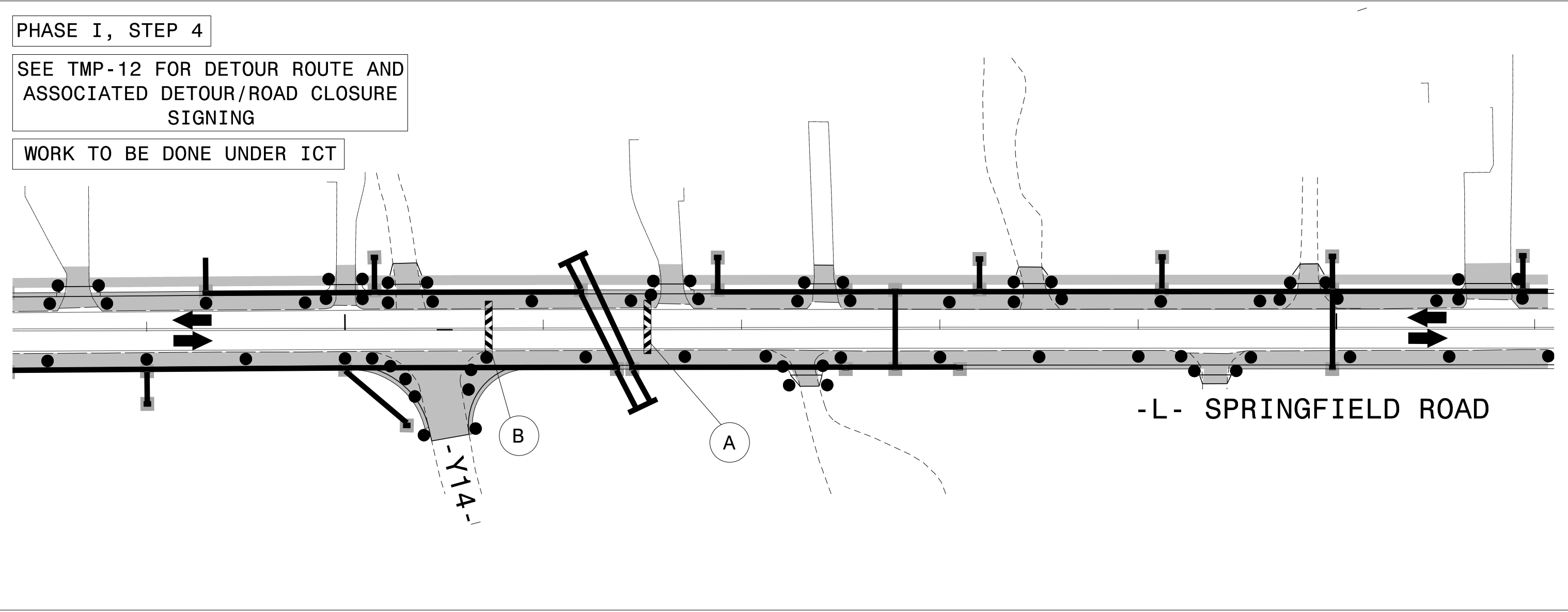
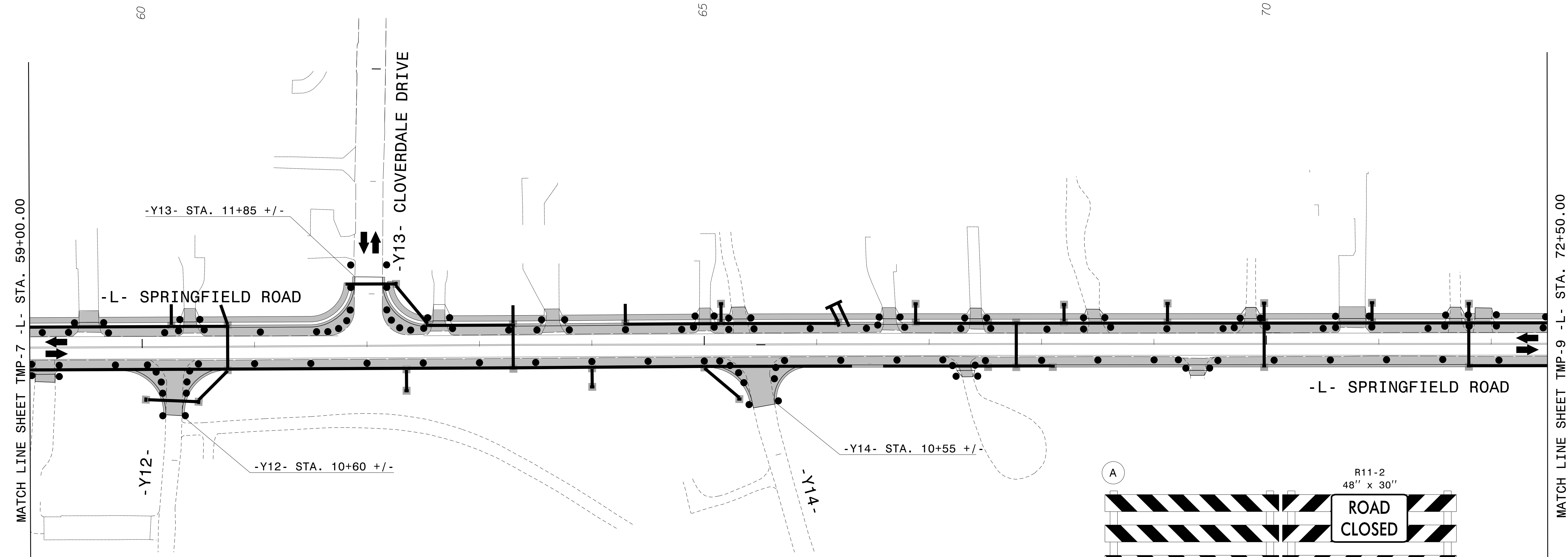
APPROVED: \_\_\_\_\_ DATE: \_\_\_\_\_

SEAL



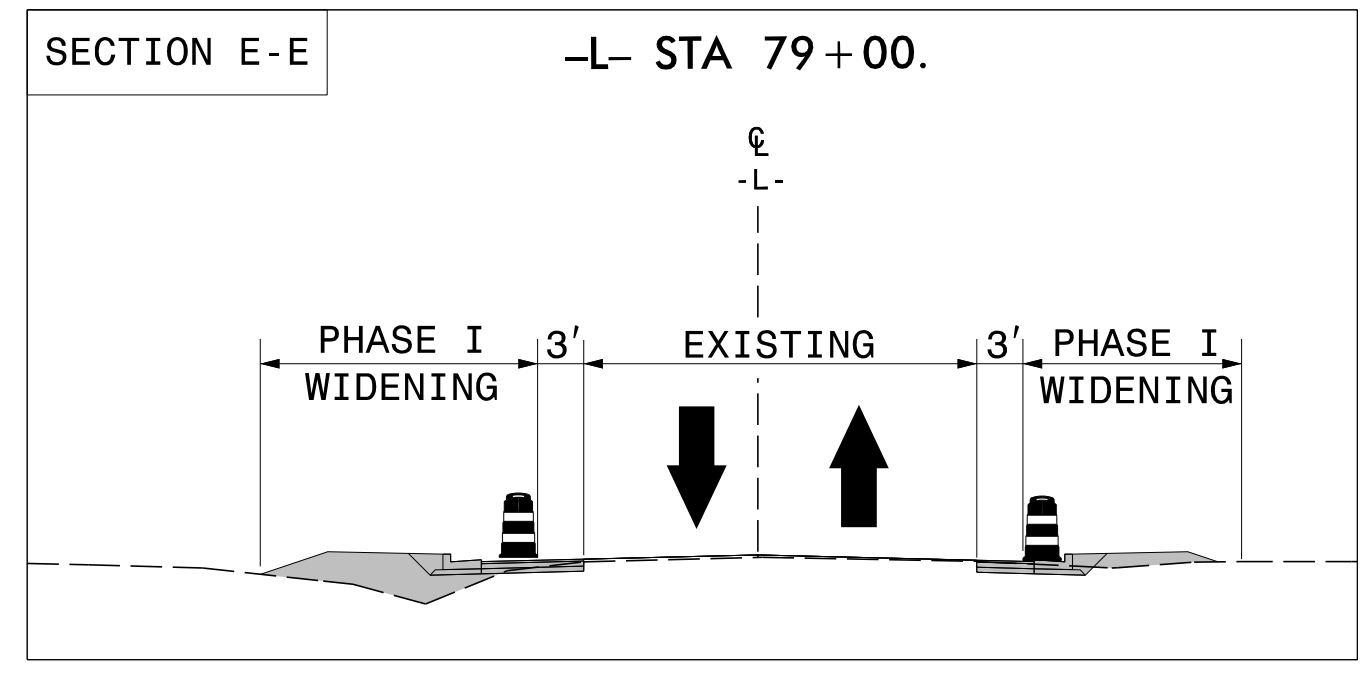
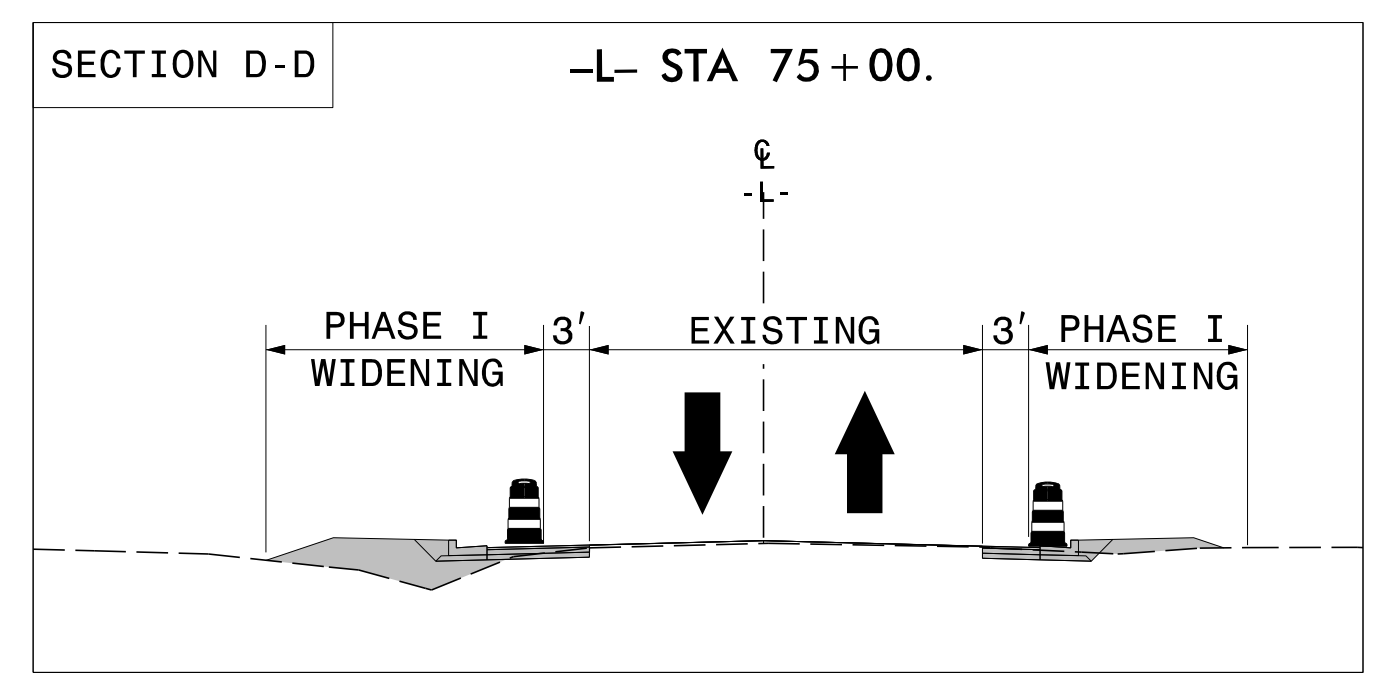
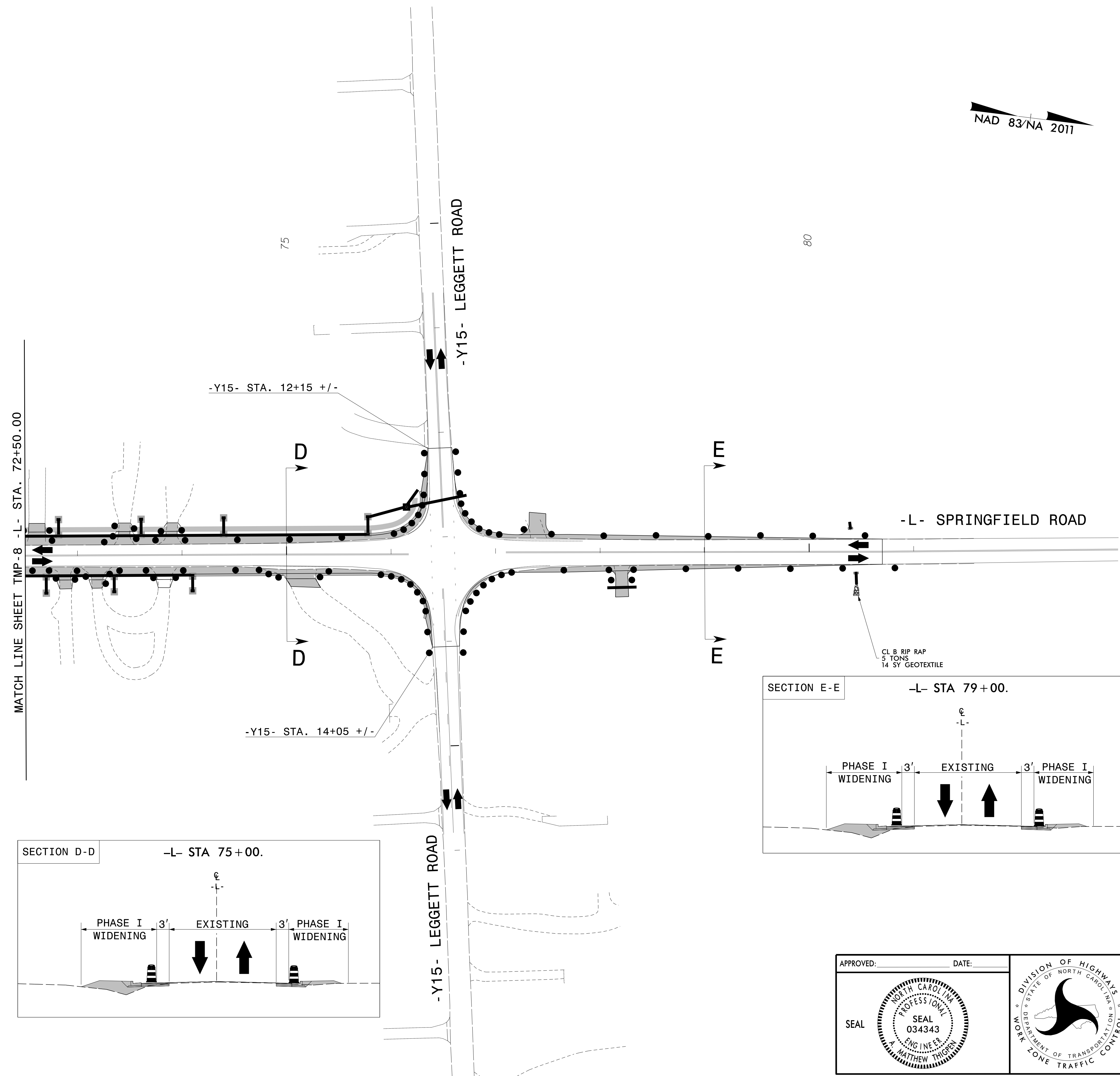
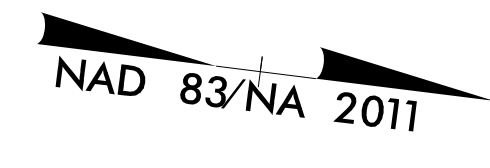
PHASE I DETAIL

4/25/2017  
 \\vhb\pro\raleigh\38369.06 NCDOT-CALYX-T06(U-4762)\cad\te\plan\Traffic Control\U-4762-1c.tmp\_07.dgn  
 User: mthigpen



APPROVED: _____ DATE: _____		<p>PHASE I DETAIL</p>

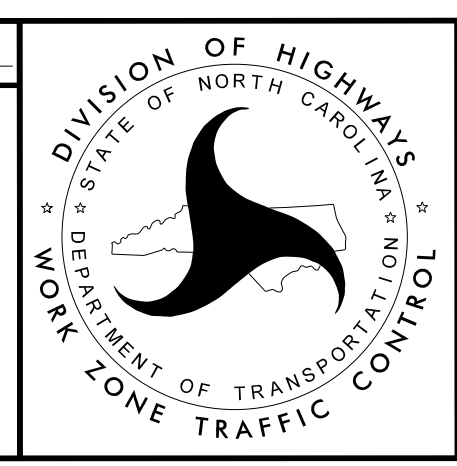
4/25/2017  
 \\vhb\pro\raleigh\38359.06 NCD01-CALYX-T06(U-4762)\cod\te\planset\Traffic\Control\U-4762-rc\_tmp\_08.dgn  
 User: mthigpen



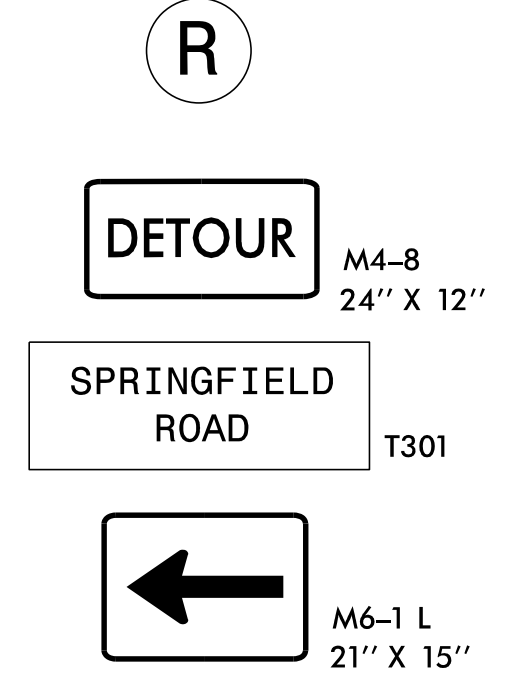
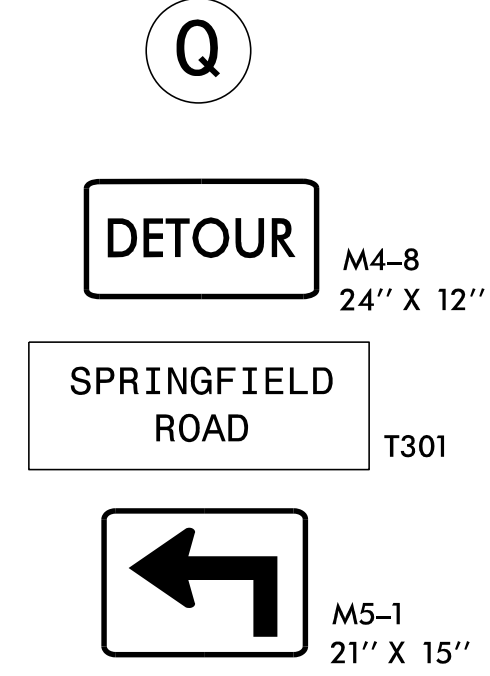
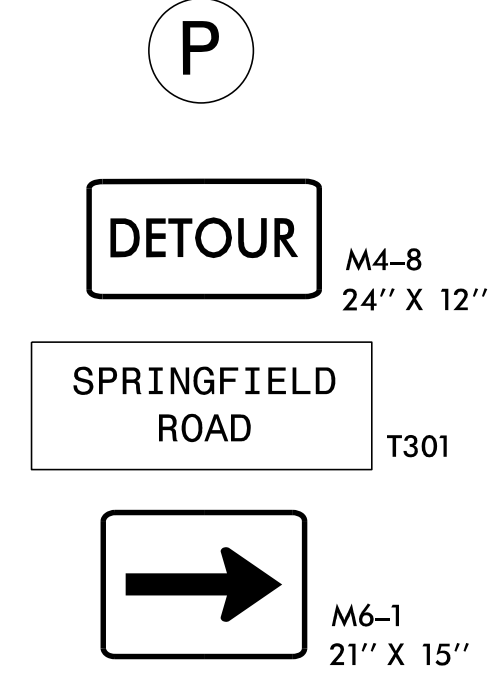
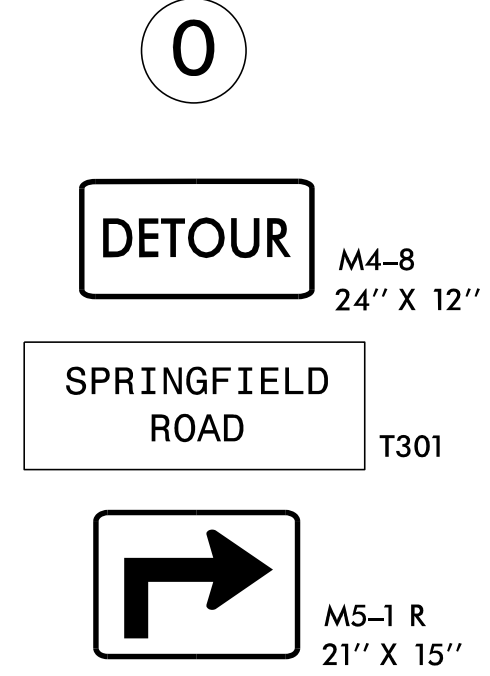
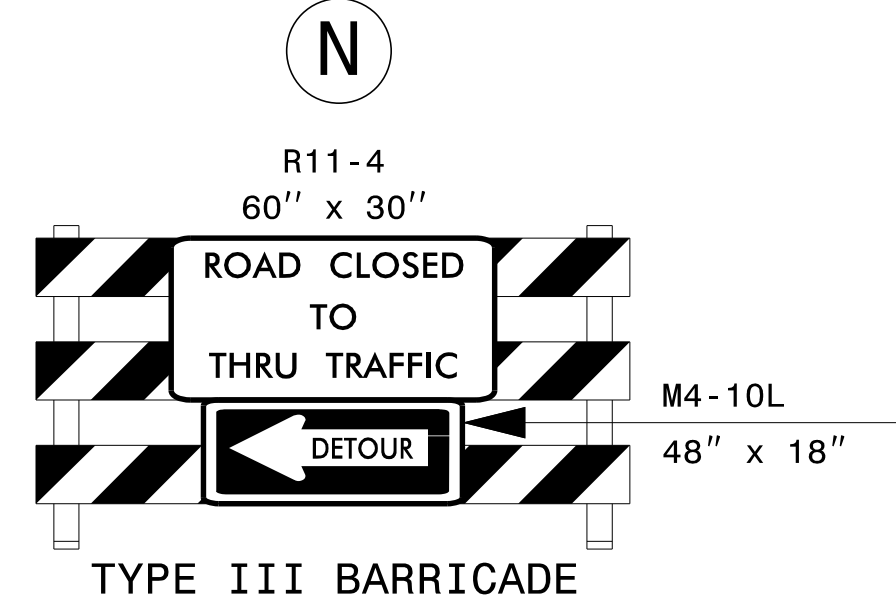
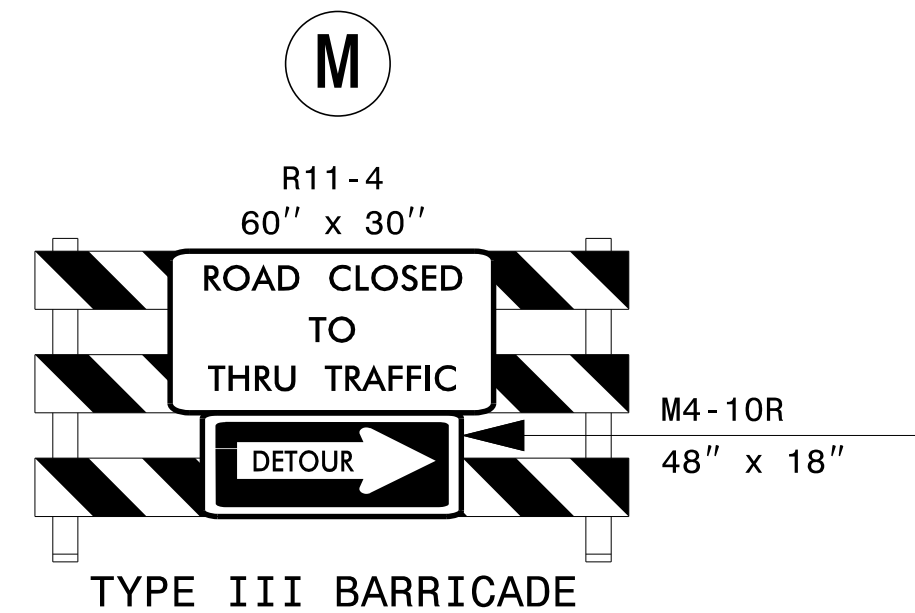
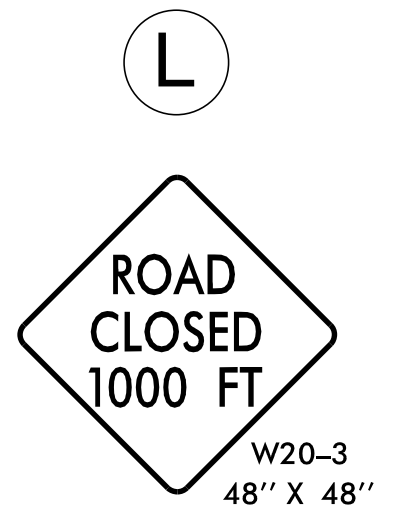
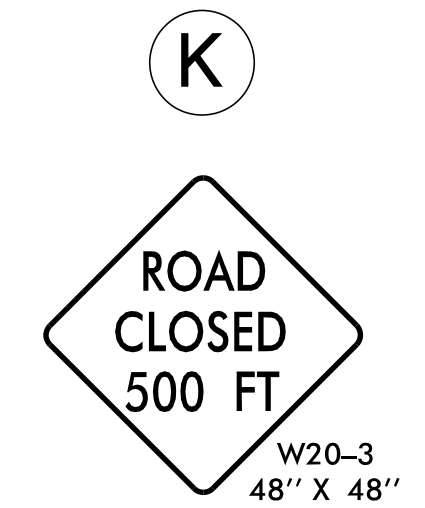
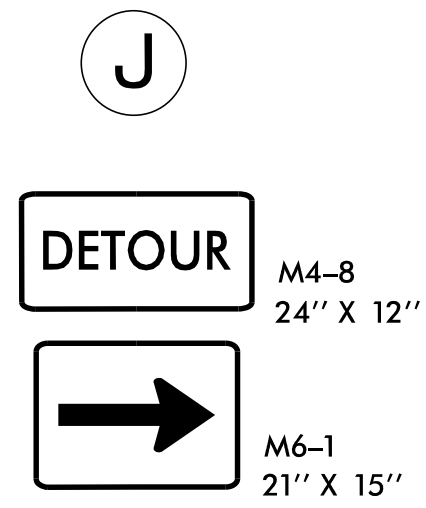
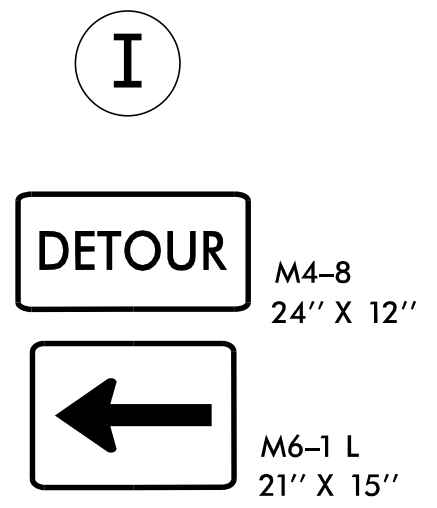
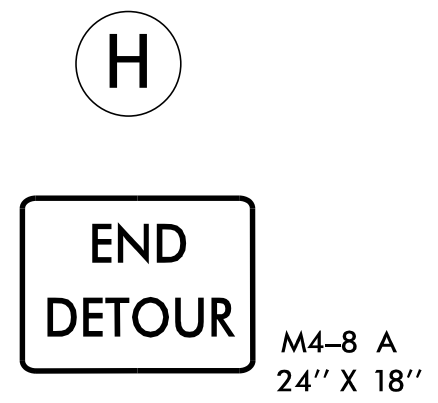
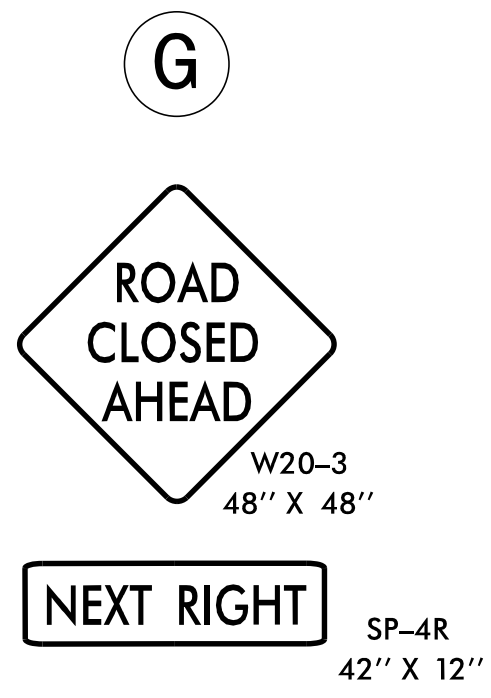
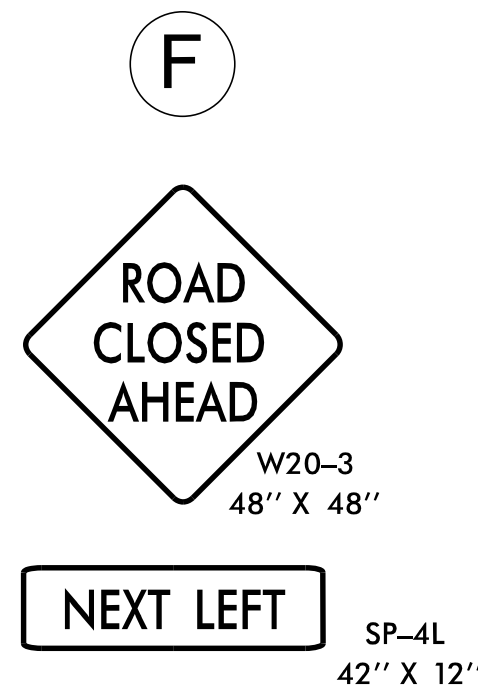
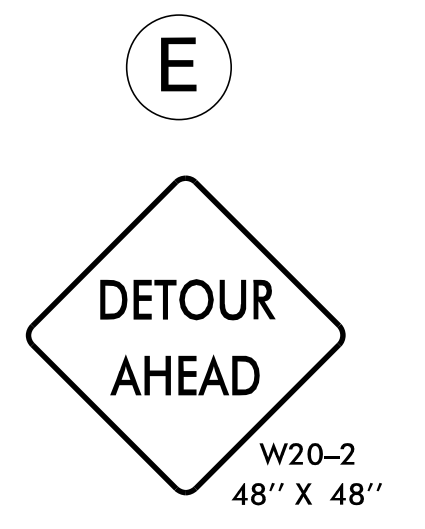
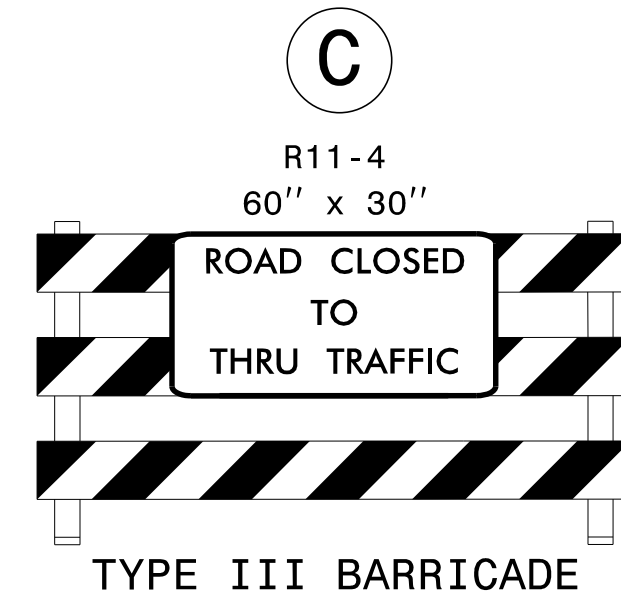
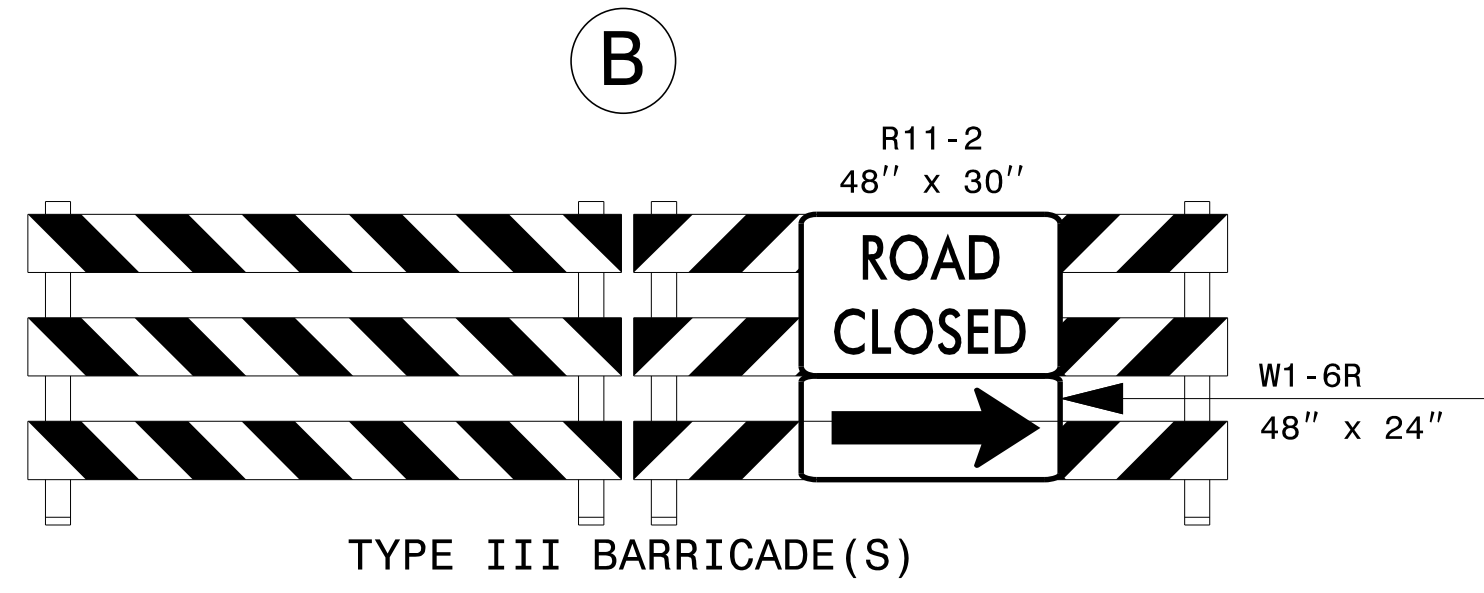
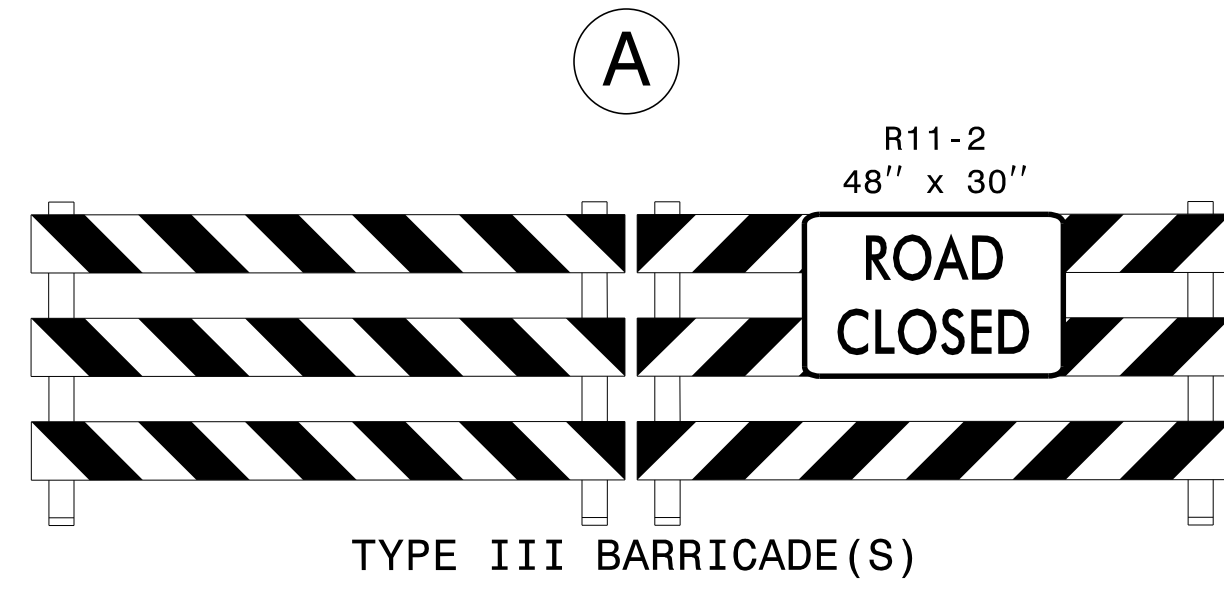
4/25/2017  
 \\vhb\proj\raleigh\38369.06 NCDOT-CALYX-T06(U-4762)\cod\te\planset\Traffic\Control\U-4762-rc\_tmp\_09.dgn  
 User: mthigben

APPROVED: \_\_\_\_\_ DATE: \_\_\_\_\_

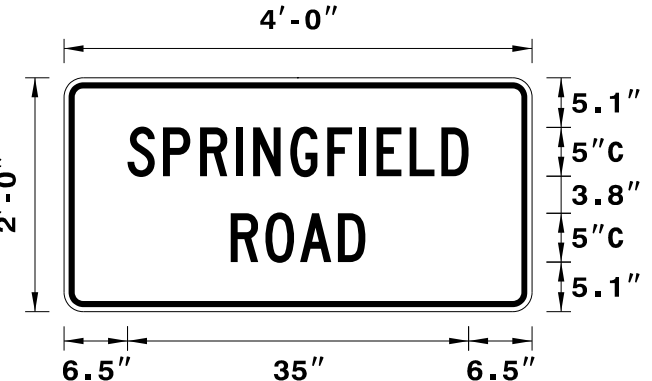
SEAL



PHASE I DETAIL



SIGN NUMBER: T301	BACKG COLOR: Fluorescent Orange	DESIGN BY: M Thigpen	CHECKED BY: J. Lewis	Mar 23, 2017	
TYPE: STATIONARY	COPY COLOR: Black	PROJECT ID: U-4762	LOCATION:	DIV: 04	
QUANTITY: SEE PLANS	SYMBOL	X	Y	WID	HT
SIGN WIDTH: 4'-0"					
HEIGHT: 2'-0"					
TOTAL AREA: 8.0 Sq.Ft.					
BORDER TYPE: INSET					
RECESS: 0.47"					
WIDTH: 0.63"					
RADII: 1.5"					
NO. Z BARS:	MAT'L: 0.080" (2.0 mm) ALUMINUM				
LENGTH:					
USE NOTES: 1,2					
1. Legend and border shall be direct applied black non-reflective sheeting.					
2. Background shall be NC GRADE B fluorescent orange retroreflective sheeting.					



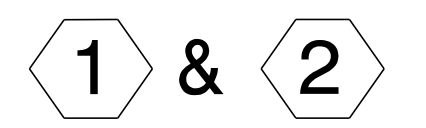
Panel Style: construction\_guide.ssi  
M.U.T.C.D.: 2009 Edition

Spacing Factor is 1 unless specified otherwise

Letter locations are panel edge to lower left corner													Series/Size
S	P	R	I	N	G	F	I	E	L	D			Text Length
6.5	10.2	14	17.6	19.4	23.2	27	30.3	32.1	35.5	38.7			C 2000
													35
													C 2000
													13.8

FILENAME: U-4762\_Guidesign\_Englsh

NORTH CAROLINA D.O.T. SIGN DETAIL

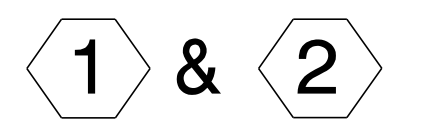


MESSAGE NO. 1	MESSAGE NO. 2
SPRINGFIELD RD CLOSED	BEGINNING MM/DD

CHANGEABLE MESSAGE SIGN

DISPLAY 7 DAYS PRIOR TO OLD SPRINGFIELD ROAD TEMPORARY CLOSURE

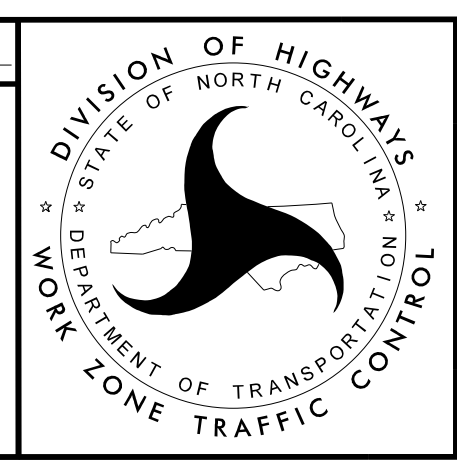
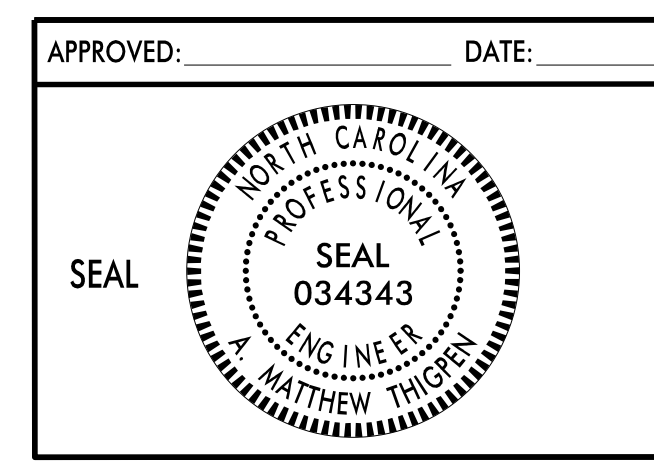
MMM = 2 LETTER MONTH ABBREVIATION  
DD = 2 DIGIT DATE



MESSAGE NO. 1	MESSAGE NO. 2
SPRINGFIELD RD CLOSED	USE COX AVE

CHANGEABLE MESSAGE SIGN

DISPLAY WHILE SPRINGFIELD ROAD IS CLOSED TO THROUGH TRAFFIC



OFF SITE DETOUR ROUTES

4/25/2017 \\vhs\proj\raleigh\38359.06 NCDOT-CALYX-T06(U-4762)\cod\te\plan\set\Traffic\Traffic Control\U-4762.tc\_tmp\_10.dgn User:mthigpen



4/25/2017  
 \\vbs\proj\Raleigh\38359.06 NCDOT-CALYX-T06IU-4762\cad\te\planset\Traffic\Traffic Control\U-4762\_tc\_tmp\_10.dgn  
 User:tmthigben

APPROVED: _____ DATE: _____		OFF SITE DETOUR ROUTES



4/25/2017  
 \\vhs\proj\Raleigh\38359.06 NCDOT-CALYX-T06(U-4762)\cad\te\planset\Traffic\Traffic Control\U-4762-1c-tmp-11.dgn  
 User:tmthigben

APPROVED: _____	DATE: _____			<b>OFF SITE DETOUR ROUTES</b>