

PHASING DIAGRAM

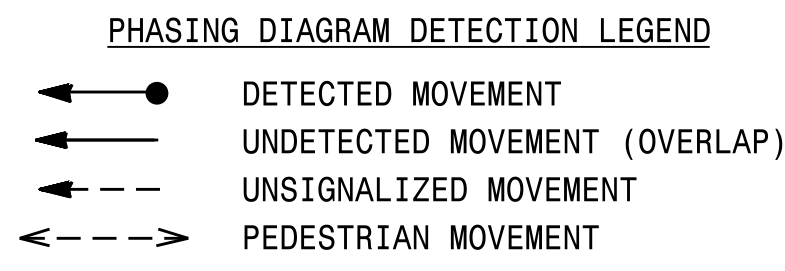
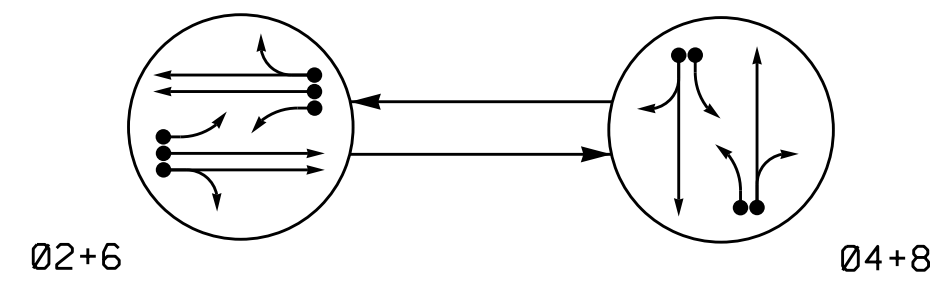
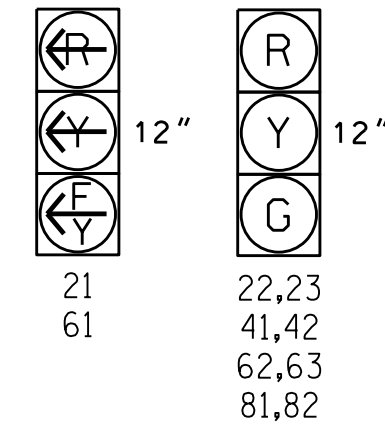


TABLE OF OPERATION

SIGNAL FACE	PHASE		
	02+6	04+8	FLASH
21	Y	R	Y
22,23	G	R	Y
41,42	R	G	R
61	Y	R	Y
62,63	G	R	Y
81,82	R	G	R

SIGNAL FACE I.D.

All Heads L.E.D.



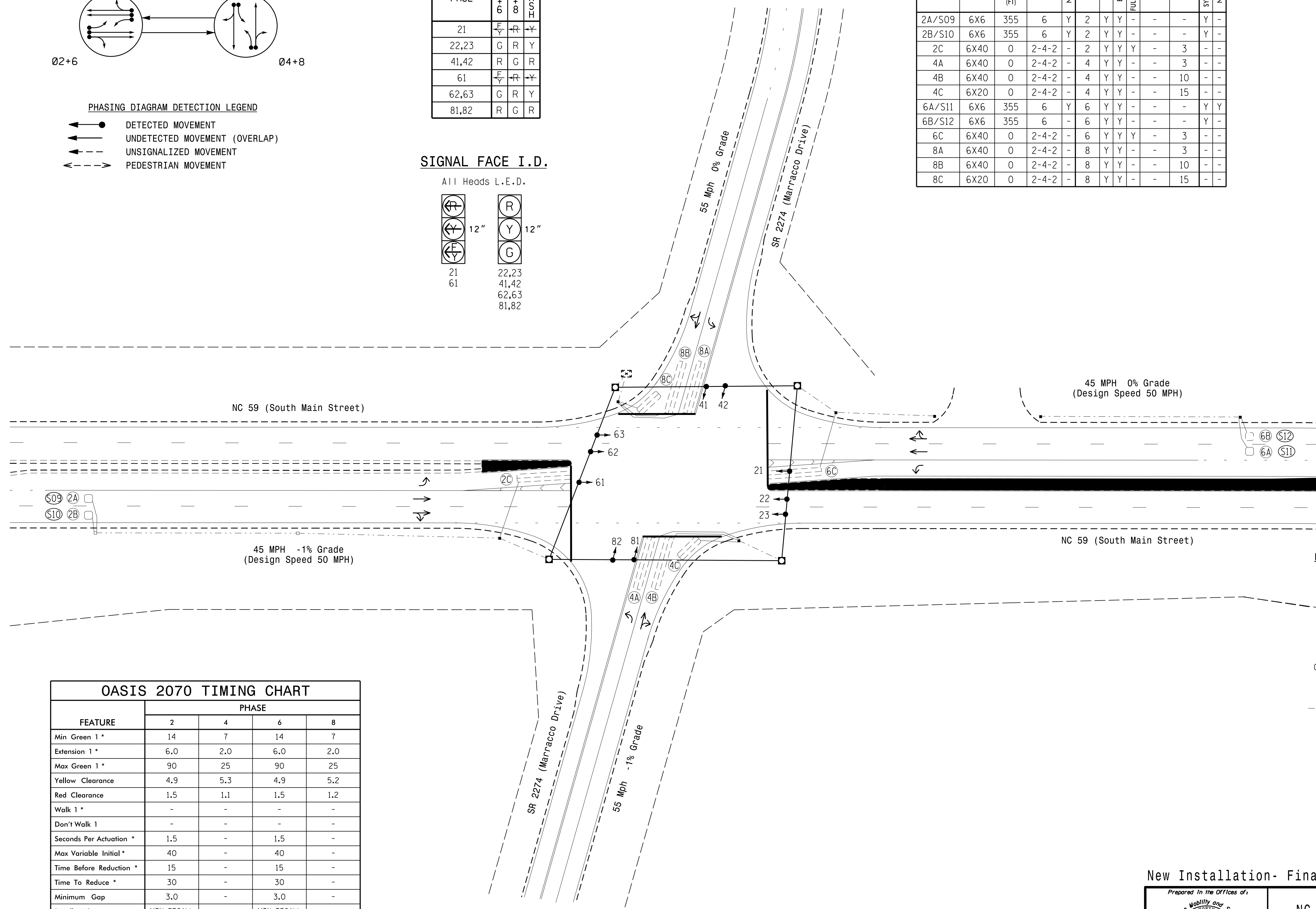
OASIS 2070 LOOP & DETECTOR INSTALLATION CHART

LOOP	SIZE (FT)	DISTANCE FROM STOPBAR (FT)	TURNS	DETECTOR PROGRAMMING				STRETCH TIME	DELAY TIME	SYSTEM LOOP	NEW CARD
				NEW LOOP	PHASE	CALLING	EXTENSION				
2A/S09	6X6	355	6	Y	2	Y	Y	-	-	Y	-
2B/S10	6X6	355	6	Y	2	Y	Y	-	-	Y	-
2C	6X40	0	2-4-2	-	2	Y	Y	-	3	-	-
4A	6X40	0	2-4-2	-	4	Y	Y	-	3	-	-
4B	6X40	0	2-4-2	-	4	Y	Y	-	10	-	-
4C	6X20	0	2-4-2	-	4	Y	Y	-	15	-	-
6A/S11	6X6	355	6	Y	6	Y	Y	-	-	Y	Y
6B/S12	6X6	355	6	-	6	Y	Y	-	-	-	Y
6C	6X40	0	2-4-2	-	6	Y	Y	-	3	-	-
8A	6X40	0	2-4-2	-	8	Y	Y	-	3	-	-
8B	6X40	0	2-4-2	-	8	Y	Y	-	10	-	-
8C	6X20	0	2-4-2	-	8	Y	Y	-	15	-	-

2 Phase Fully Actuated NC 59 Closed Loop System

NOTES

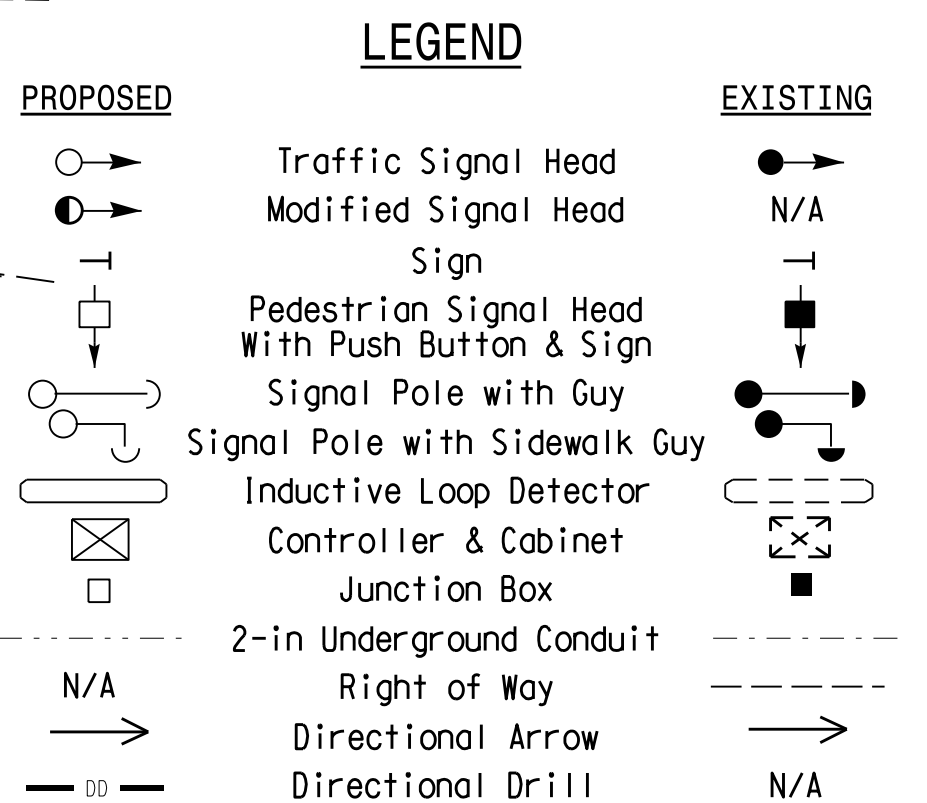
- Refer to "Roadway Standard Drawings NCDOT" dated January 2018 and "Standard Specifications for Roads and Structures" dated January 2018.
- Do not program signal for late night flashing operation unless otherwise directed by the Engineer.
- Reposition existing signal heads numbered 62 and 63.
- Set all detector units to presence mode.
- Maximum times shown in timing chart are for free-run operation only. Coordinated signal system timing values supersede these values.
- Closed loop system data: Controller Asset # 1356.



OASIS 2070 TIMING CHART

FEATURE	PHASE			
	2	4	6	8
Min Green 1 *	14	7	14	7
Extension 1 *	6.0	2.0	6.0	2.0
Max Green 1 *	90	25	90	25
Yellow Clearance	4.9	5.3	4.9	5.2
Red Clearance	1.5	1.1	1.5	1.2
Walk 1 *	-	-	-	-
Don't Walk 1	-	-	-	-
Seconds Per Actuation *	1.5	-	1.5	-
Max Variable Initial *	40	-	40	-
Time Before Reduction *	15	-	15	-
Time To Reduce *	30	-	30	-
Minimum Gap	3.0	-	3.0	-
Recall Mode	MIN RECALL	-	MIN RECALL	-
Vehicle Call Memory	YELLOW	-	YELLOW	-
Dual Entry	-	ON	-	ON
Simultaneous Gap	ON	ON	ON	ON

* These values may be field adjusted. Do not adjust Min Green and Extension times for phases 2 and 6 lower than what is shown. Min Green for all other phases should not be lower than 4 seconds.



New Installation- Final

750 N. Greenfield Pkwy, Garner, NC 27529

NC 59 (South Main Street)
at
SR 2274 (Marracco Drive)

Division 6 Cumberland County Hope Mills

PLAN DATE: October 2017 REVIEWED BY: MEL

PREPARED BY: Jeff Spence REVIEWED BY:

DOCUMENT NOT CONSIDERED FINAL UNLESS ALL SIGNATURES COMPLETED

SEAL

11/28/2017

SIG. INVENTORY NO. 06-1356