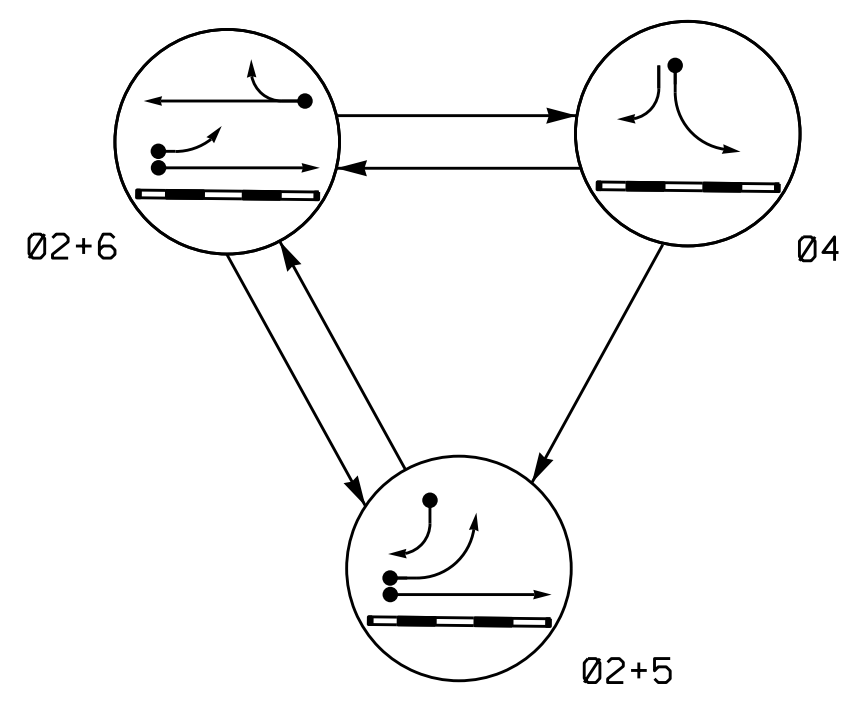


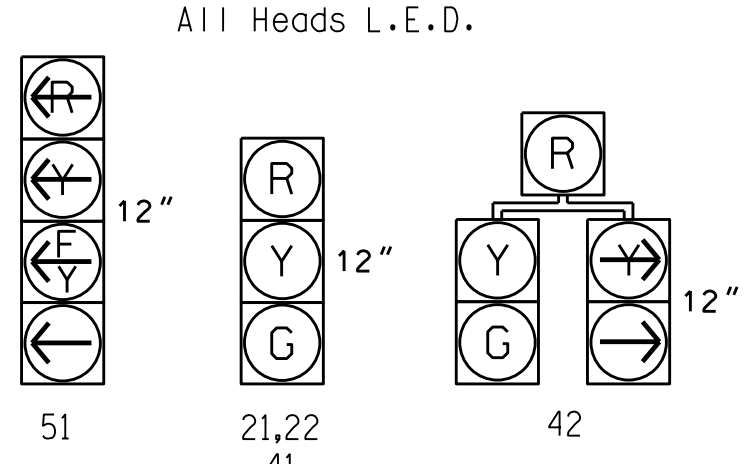
PHASING DIAGRAM



PHASING DIAGRAM DETECTION LEGEND
 ● ———→ DETECTED MOVEMENT
 ———→ UNDETECTED MOVEMENT (OVERLAP)
 - - - - - UNSIGNALIZED MOVEMENT
 ← - - - - → PEDESTRIAN MOVEMENT

SIGNAL FACE	PHASE			
	02+5	02+6	04	PED
21,22	G	G	R	Y
41	R	R	G	R
42	R	R	G	R
51	F	F	R	Y
61,62	R	G	R	Y

SIGNAL FACE I.D.

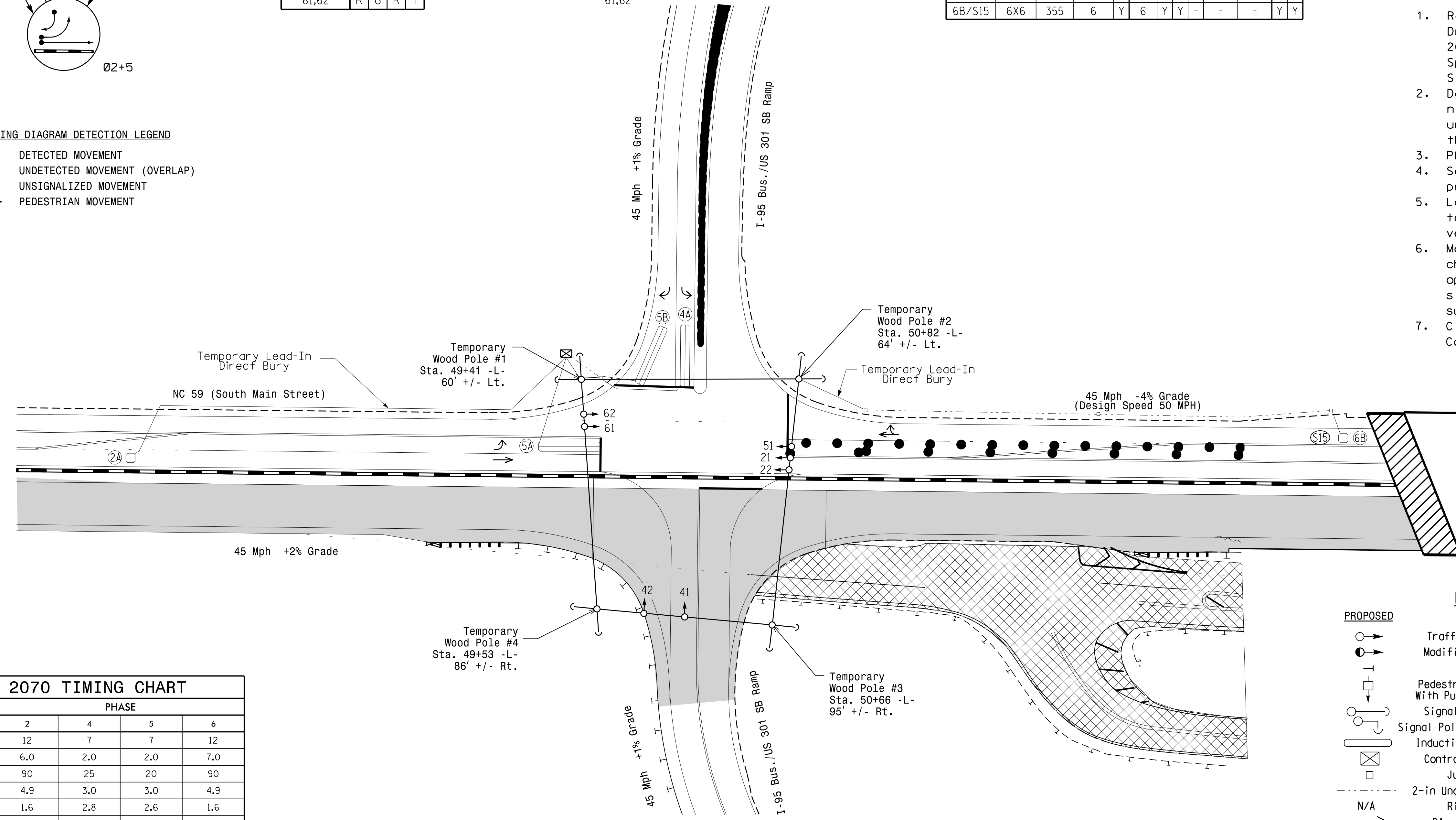


OASIS 2070 LOOP & DETECTOR INSTALLATION CHART												
INDUCTIVE LOOPS				DETECTOR PROGRAMMING								
LOOP	SIZE (FT)	DISTANCE FROM STOPBAR (FT)	TURNS	NEW LOOP	PHASE	CALLING	EXTENSION	FULL TIME DELET	STRETCH TIME	DELAY TIME	SYSTEM LOOP	NEW CARD
2A	6X6	300	6	Y	2	Y	Y	-	-	-	-	Y
4A	6X40	0	2-4-2	Y	4	Y	Y	-	-	3	-	Y
5A	6X40	0	2-4-2	Y	5	Y	Y	-	-	15	-	Y
5B	6X40	0	2-4-2	Y	5	Y	Y	-	-	15	-	Y
6B/S15	6X6	355	6	Y	6	Y	Y	-	-	-	Y	Y

**3 Phase Fully Actuated
NC 59 Closed Loop System**

NOTES

1. Refer to "Roadway Standard Drawings NCDOT" dated January 2018 and "Standard Specifications for Roads and Structures" dated January 2018.
2. Do not program signal for late night flashing operation unless otherwise directed by the Engineer.
3. Phase 5 may be lagged.
4. Set all detector units to presence mode.
5. Locate new cabinet so as not to obstruct sight distance of vehicles turning right on red.
6. Maximum times shown in timing chart are for free-run operation only. Coordinated signal system timing values supersede these values.
7. Closed loop system data: Controller Asset # 0946.



FEATURE	PHASE			
	2	4	5	6
Min Green 1 *	12	7	7	12
Extension 1 *	6.0	2.0	2.0	7.0
Max Green 1 *	90	25	20	90
Yellow Clearance	4.9	3.0	3.0	4.9
Red Clearance	1.6	2.8	2.6	1.6
Red Revert	2.0	2.0	2.0	2.0
Walk 1 *	-	-	-	-
Don't Walk 1	-	-	-	-
Seconds Per Actuation *	2.5	-	-	2.5
Max Variable Initial *	34	-	-	34
Time Before Reduction *	15	-	-	15
Time To Reduce *	30	-	-	30
Minimum Gap	3.0	-	-	3.0
Recall Mode	MIN RECALL	-	-	MIN RECALL
Vehicle Call Memory	YELLOW	-	-	YELLOW
Dual Entry	-	-	-	-
Simultaneous Gap	ON	ON	ON	ON

* These values may be field adjusted. Do not adjust Min Green and Extension times for phases 2 and 6 lower than what is shown. Min Green for all other phases should not be lower than 4 seconds.

PROPOSED	EXISTING
○	●
○ ———→	N/A
⊣	⊣
⊣ ———→	⊣ ———→
⊣ ———→	⊣ ———→
⊣ ———→	⊣ ———→
⊣ ———→	⊣ ———→
⊣ ———→	⊣ ———→
⊣ ———→	⊣ ———→
N/A	→
N/A	● ———→
N/A	■
■	■

LEGEND

Signal Upgrade - Temporary 2 (Phase I-18)

Prepared in the Offices of:
TRANSPORTATION MOBILITY AND SAFETY DESIGN
 STATE OF NORTH CAROLINA
 SIGNAL DESIGN SECTION

750 N. Greenfield Pkwy, Garner, NC 27529

NC 59 (South Main Street) at I-95 Bus./US 301 SB Ramp / SR 2285 (Shipman Road)

Division 6 Cumberland County Hope Mills

PLAN DATE: September 2017 REVIEWED BY: ZML

PREPARED BY: M.E. LeBlanc REVIEWED BY:

SCALE: 1" = 40'

REVISIONS: INIT. DATE

DOCUMENT NOT CONSIDERED FINAL UNLESS ALL SIGNATURES COMPLETED

SEAL
 NORTH CAROLINA PROFESSIONAL ENGINEER
 M. E. LE BLANC
 042608
 11/28/2017
 DATE
 SIG. INVENTORY NO. 06-094612