

PROJECT REFERENCE NO.	SHEET NO.
B-4491	EC-14/CONST.7
RW SHEET NO.	
ROADWAY DESIGN ENGINEER	HYDRAULICS ENGINEER

NAD 83 / NA 2011

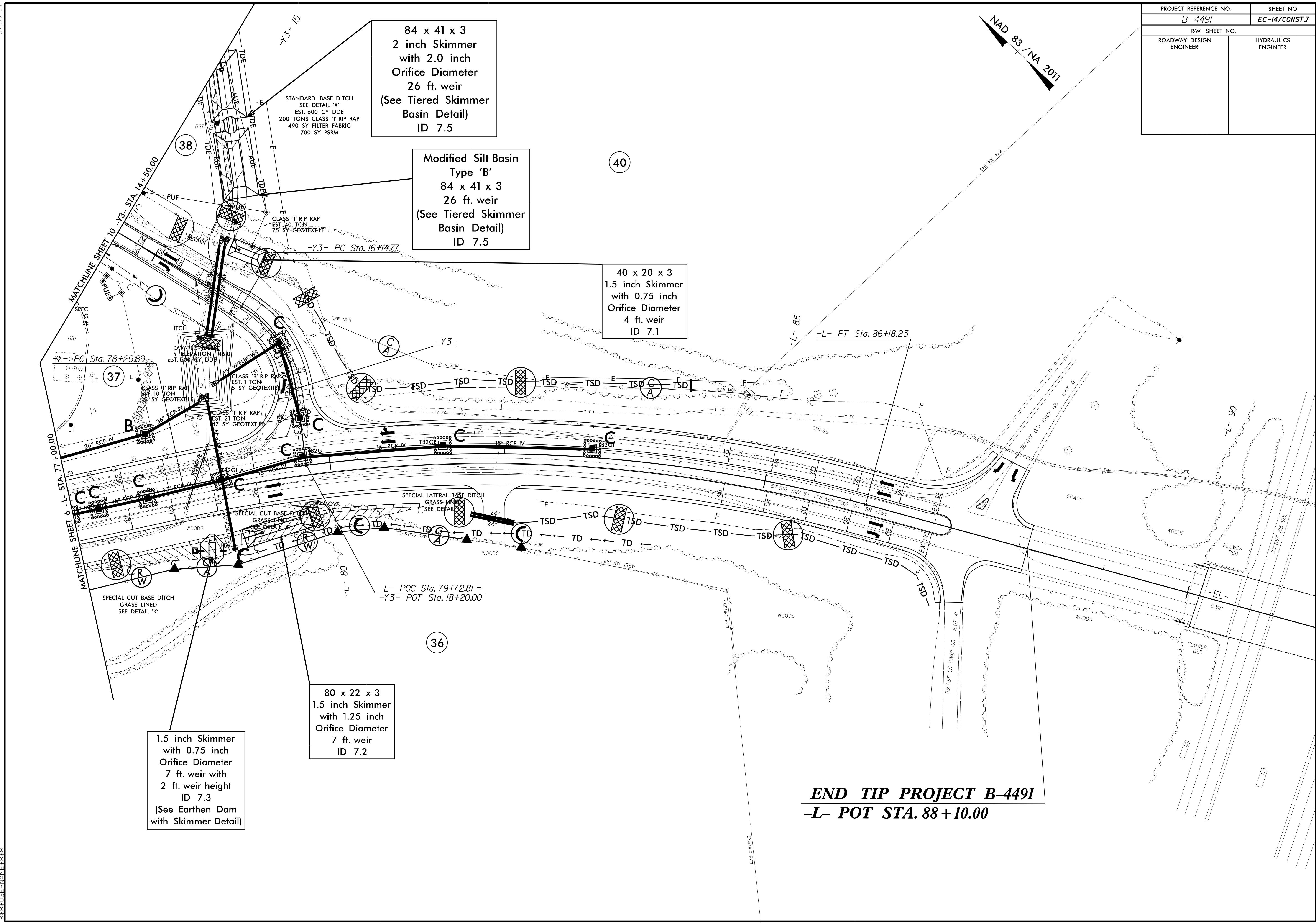
84 x 41 x 3  
2 inch Skimmer  
with 2.0 inch  
Orifice Diameter  
26 ft. weir  
(See Tiered Skimmer  
Basin Detail)  
ID 7.5

Modified Silt Basin  
Type 'B'  
84 x 41 x 3  
26 ft. weir  
(See Tiered Skimmer  
Basin Detail)  
ID 7.5

40 x 20 x 3  
1.5 inch Skimmer  
with 0.75 inch  
Orifice Diameter  
4 ft. weir  
ID 7.1

80 x 22 x 3  
1.5 inch Skimmer  
with 1.25 inch  
Orifice Diameter  
7 ft. weir  
ID 7.2

1.5 inch Skimmer  
with 0.75 inch  
Orifice Diameter  
7 ft. weir with  
2 ft. weir height  
ID 7.3  
(See Earthen Dam  
with Skimmer Detail)



**END TIP PROJECT B-4491**  
**-L- POT STA. 88 + 10.00**

8.17/99