

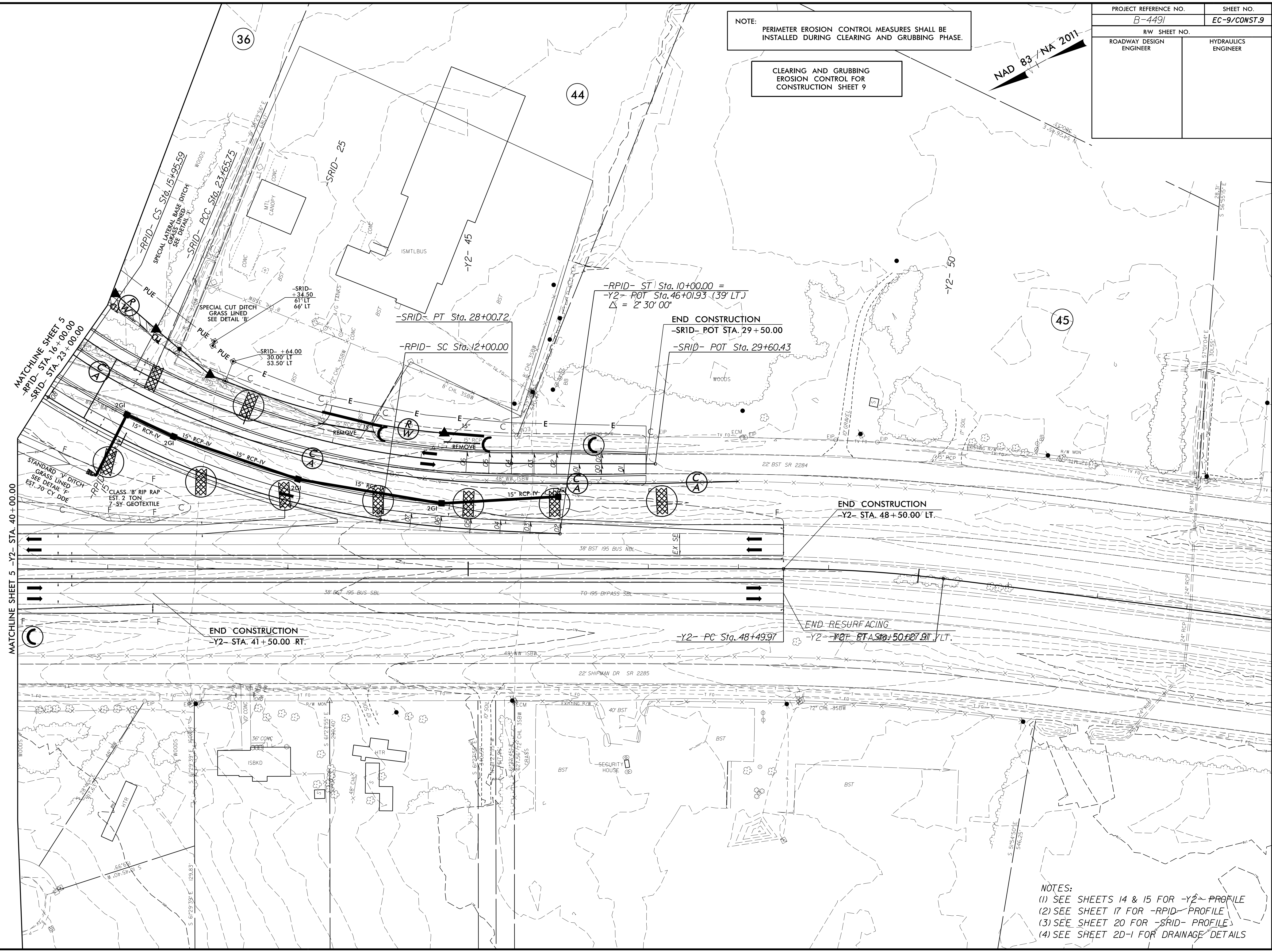
8/17/99

| | |
|-------------------------|---------------------|
| PROJECT REFERENCE NO. | SHEET NO. |
| B-4491 | EC-9/CONST.9 |
| RW SHEET NO. | |
| ROADWAY DESIGN ENGINEER | HYDRAULICS ENGINEER |

NOTE:
PERIMETER EROSION CONTROL MEASURES SHALL BE
INSTALLED DURING CLEARING AND GRUBBING PHASE.

CLEARING AND GRUBBING
EROSION CONTROL FOR
CONSTRUCTION SHEET 9

NAD 83/NA 2011



MATCHLINE SHEET 5
-RPID- STA. 16+00.00
-SRID- STA. 23+00.00

MATCHLINE SHEET 5
-Y2- STA. 40+00.00

END CONSTRUCTION
-Y2- STA. 41+50.00 RT.

-RPID- ST | Sta. 10+00.00 =
-Y2- POT Sta. 46+01.93 (39' LT.)
 $\Delta = 2' 30'' 00''$

END CONSTRUCTION
-SRID- POT STA. 29+50.00
-SRID- POT Sta. 29+60.43

END CONSTRUCTION
-Y2- STA. 48+50.00' LT.

END RESURFACING
-Y2- POT STA. 50+50.00' LT.

- NOTES:
- (1) SEE SHEETS 14 & 15 FOR -Y2- PROFILE
 - (2) SEE SHEET 17 FOR -RPID- PROFILE
 - (3) SEE SHEET 20 FOR -SRID- PROFILE
 - (4) SEE SHEET 20-1 FOR DRAINAGE DETAILS