

THE ROAD DIST NO.	DIST.	PROJECT NO.
2	N.C.	26763

PROJECT NO. ....  
 COUNTY .....  
 STATION: .....

STATE OF NORTH CAROLINA STATE HIGHWAY COMMISSION	
APPROVED BY: <i>W. H. Rogers</i> DATE: 11/1/59	

WEAK FILM  
 QUALITY VERY POOR

Reel 694  
 Pos - 6

59-4410  
 CUMBERLAND

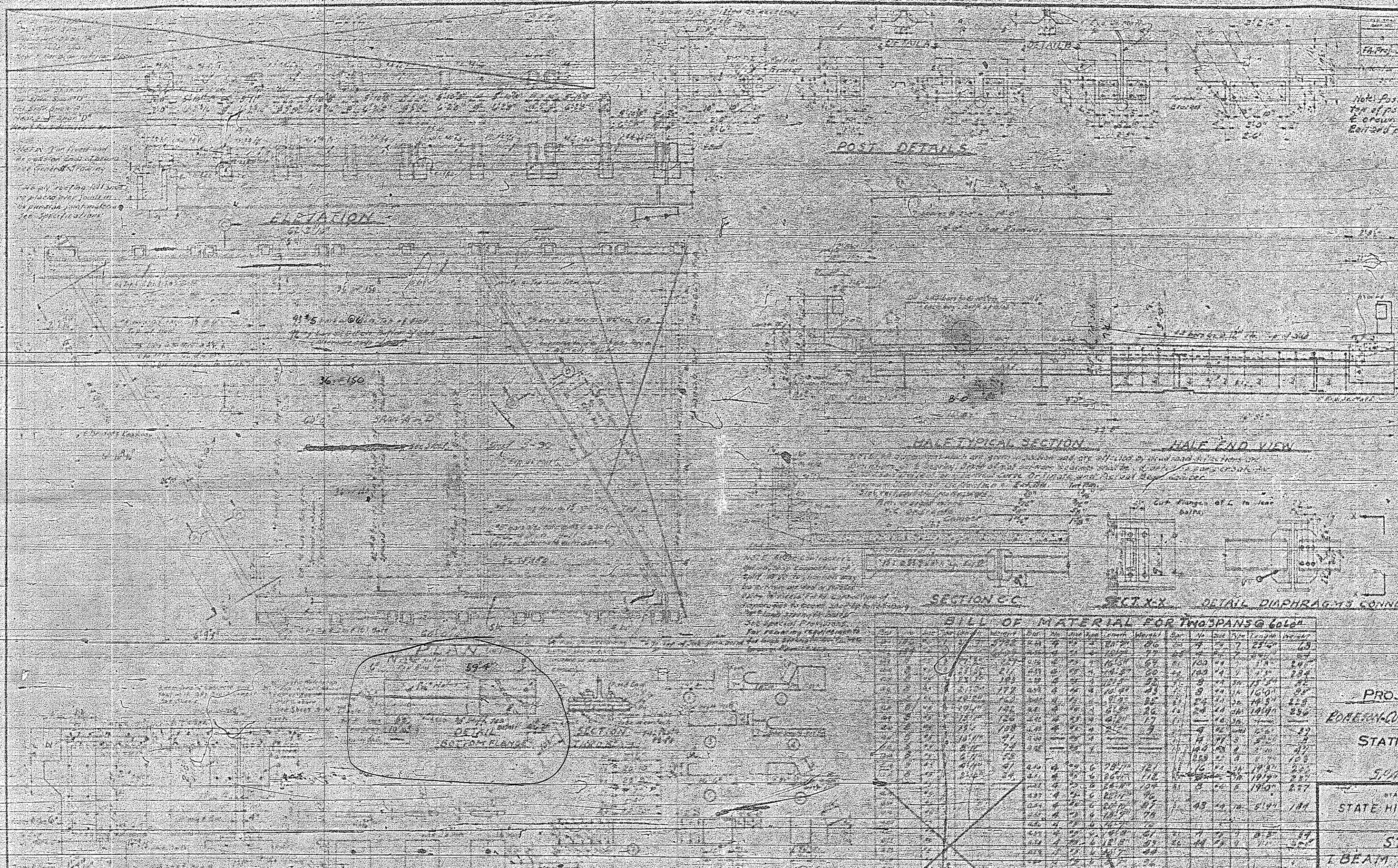
NO. 104	DATE
1	M

PROJECT NO. ....

..... COL

STATION. ....

STATE OF NORTH CAROLINA  
STATE HIGHWAY COM.  
PLANS



PROJECT NO. 8.137  
 EDGARSON-CUMBERLAND COUNTY  
 STATION 6700 LINE  
 SPAN A & D

Note: Posts to be built. The top of posts to be horizontal & crown grade. Reinforced post to be chamfered.

**BILL OF MATERIAL FOR TWO SPANS @ 60'0"**

ITEM NO.	DESCRIPTION	QTY	UNIT	PRICE	TOTAL
1	STEEL BEAM	2	LINEAL FEET	100.00	200.00
2	CONCRETE	100	CY	10.00	1000.00
3	REINFORCEMENT BARS	100	LB	0.50	50.00
4	REINFORCEMENT MESH	100	SQ YD	1.00	100.00
5	DIAPHRAGM CONCRETE	50	CY	10.00	500.00
6	DIAPHRAGM REINFORCEMENT	50	LB	0.50	25.00
7	DIAPHRAGM MESH	50	SQ YD	1.00	50.00
8	POST CONCRETE	2	CY	10.00	20.00
9	POST REINFORCEMENT	2	LB	0.50	1.00
10	POST MESH	2	SQ YD	1.00	2.00
11	CHAMFER CONCRETE	2	CY	10.00	20.00
12	CHAMFER REINFORCEMENT	2	LB	0.50	1.00
13	CHAMFER MESH	2	SQ YD	1.00	2.00
14	FORMWORK	100	SQ YD	0.50	50.00
15	BRICKWORK	100	SQ YD	1.00	100.00
16	PAINT	100	SQ YD	0.10	10.00
17	LABOR	100	HOUR	1.00	100.00
18	TRUCK	100	HOUR	1.00	100.00
19	INSURANCE	100	HOUR	0.10	10.00
20	TOTAL				3000.00

PROJECT NO. 8.137  
 EDGARSON-CUMBERLAND COUNTY  
 STATION 6700 LINE  
 SPAN A & D  
 STATE HIGHWAY COMMISSION

STANDARD I-BEAM SUPERSTRUCTURE WITH R.C. FLOOR & R.C. GIRDERS

8.13962  
 145-100-100

Note: Post to be plumb. The  
 of post to be parallel to  
 crown of road.  
 End and posts to be straight



ELEVATION

POST DETAILS



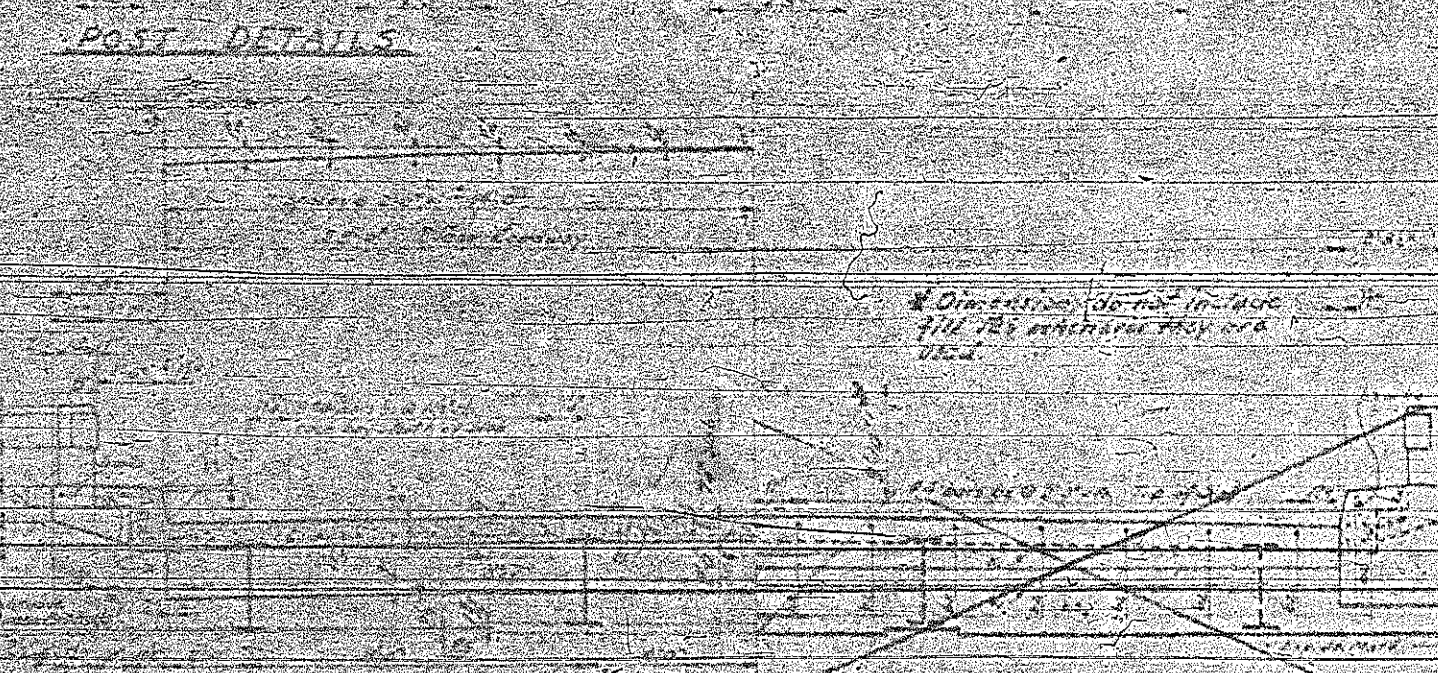
\* Dimension do not include  
 fill in the attachment tray  
 used



PLAN

HALF TYPICAL SECTION

HALF END VIEW



SECTION C

SECTION A

DETAIL PIPE HANGERS CONNECTION

BILL OF MATERIAL FOR TWO SPANS @ 70'-0"

ITEM NO.	DESCRIPTION	QUANTITY	UNIT	PRICE	TOTAL
1	Steel Deck	140	SQ FT	1.25	175.00
2	Stringers	14	LINEAL FT	12.50	175.00
3	Diaphragms	2	SQ FT	10.00	20.00
4	Posts	2	EA	100.00	200.00
5	Handrails	140	LINEAL FT	1.50	210.00
6	Concrete	140	CY	15.00	2100.00
7	Reinforcement	140	LINEAL FT	1.00	140.00
8	Formwork	140	SQ FT	1.00	140.00
9	Paint	140	SQ FT	0.50	70.00
10	Other	140	SQ FT	0.50	70.00
TOTAL					3000.00

PROJECT NO. 8

RAILROAD QUINCY AND WOOD CO

STATION 6100+2

SPANS 70'-0"

STATE OF IOWA HIGHWAY COM

STANDARD T BEAM SUPERSTR

WITH R.C. FLOOR

28 ROADWAY 30'-0"

NO. ROAD  
DATE  
N.C.

36-110-59-01

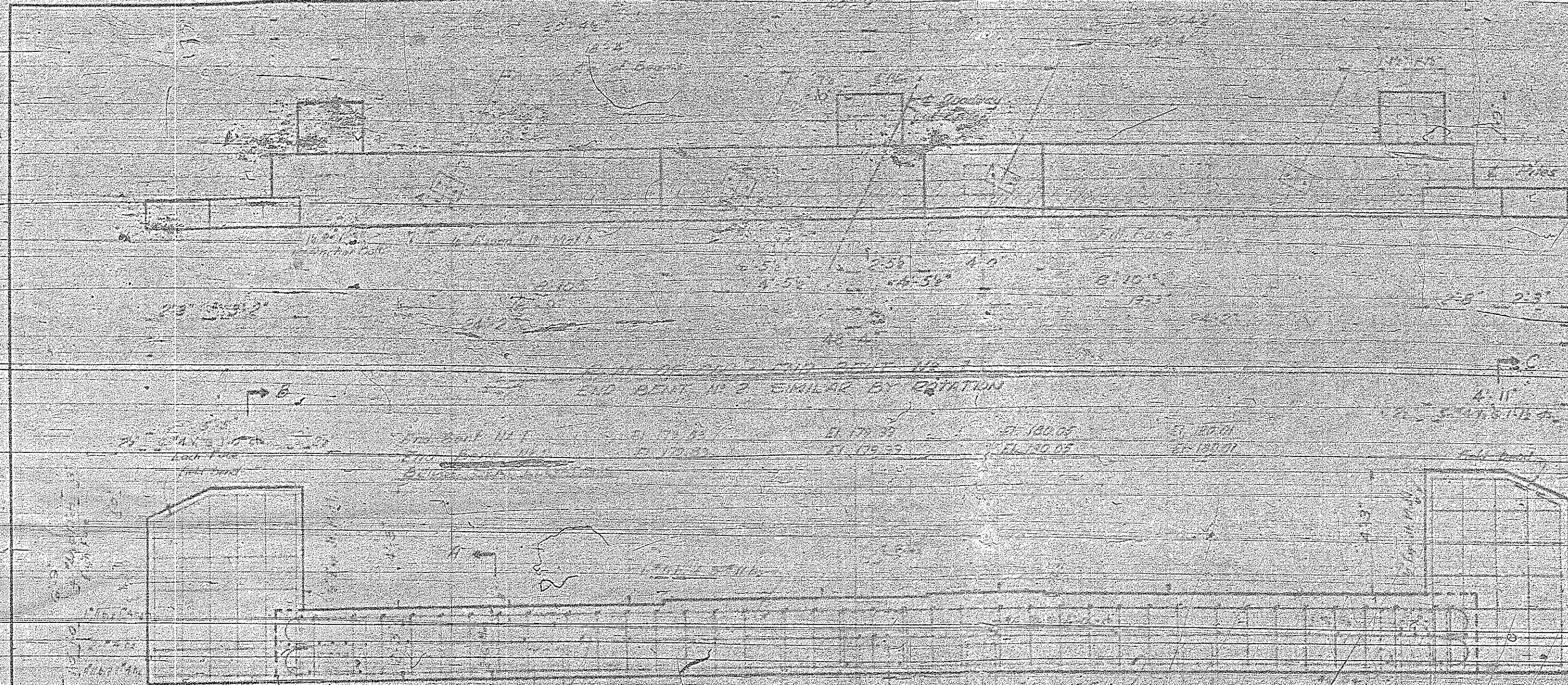
When the plan is used for the purpose of  
showing the location of the road and the  
location of the buildings and other structures  
on the land shown on the plan, the plan  
shall be used in conjunction with the  
plan of the land shown on the plan and  
the plan of the buildings and other structures  
on the land shown on the plan.

PROJECT NO. 1114

COUNTY

STATION: 1114

STATE OF NORTH CAROLINA  
STATE HIGHWAY COMMISSION

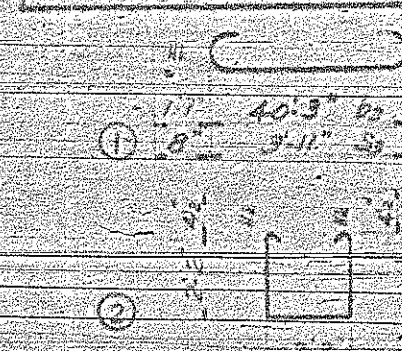


No. 300  
 2010  
 1  
 N.C.  
 F.A. Proj. No. 1

**BILL OF MATERIAL**  
FOR ONE END BENT - TWO E

Bar Number	Size	Type	Length
b1	#11	Str.	47.1
b2	#11	Str.	23.5
b3	#7	Str.	40.3
b4	#4	Str.	21.0
b5	#11	Str.	40.3
b6	#4	Str.	21.2
S1	#4	2	1.3
S2	#4	3	2.11
S3	#6	1	5.3
S4	#6	4	11.1
V1	#4	Str.	6.5
V2	#4	Str.	6.7
H1	#4	Str.	5.1
H2	#4	Str.	5.6
H3	#4	Str.	4.7
H4	#4	Str.	4.5

Reinforcing Steel lbs.  
 Class "A" Conc. Cu  
 12" x 12" Prestressed Concrete Piles



**BAR TYPES**  
All bar dimensions are out to out.

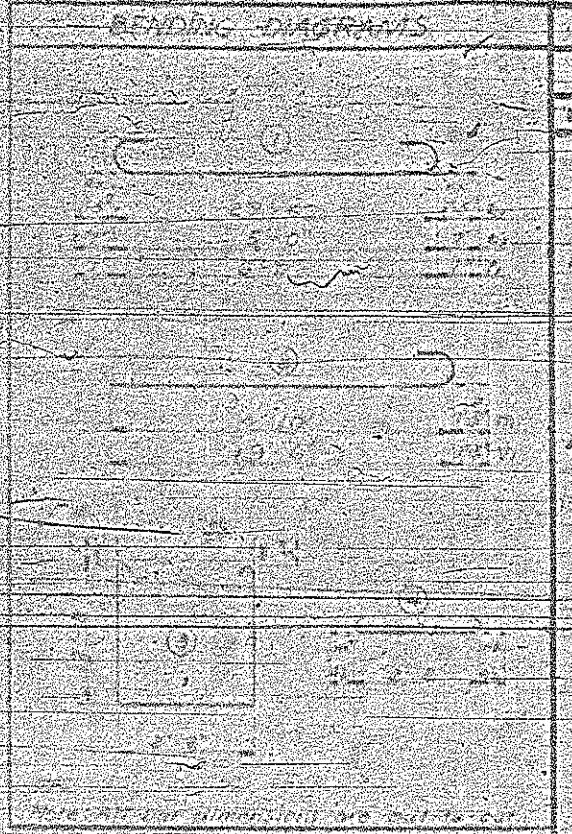
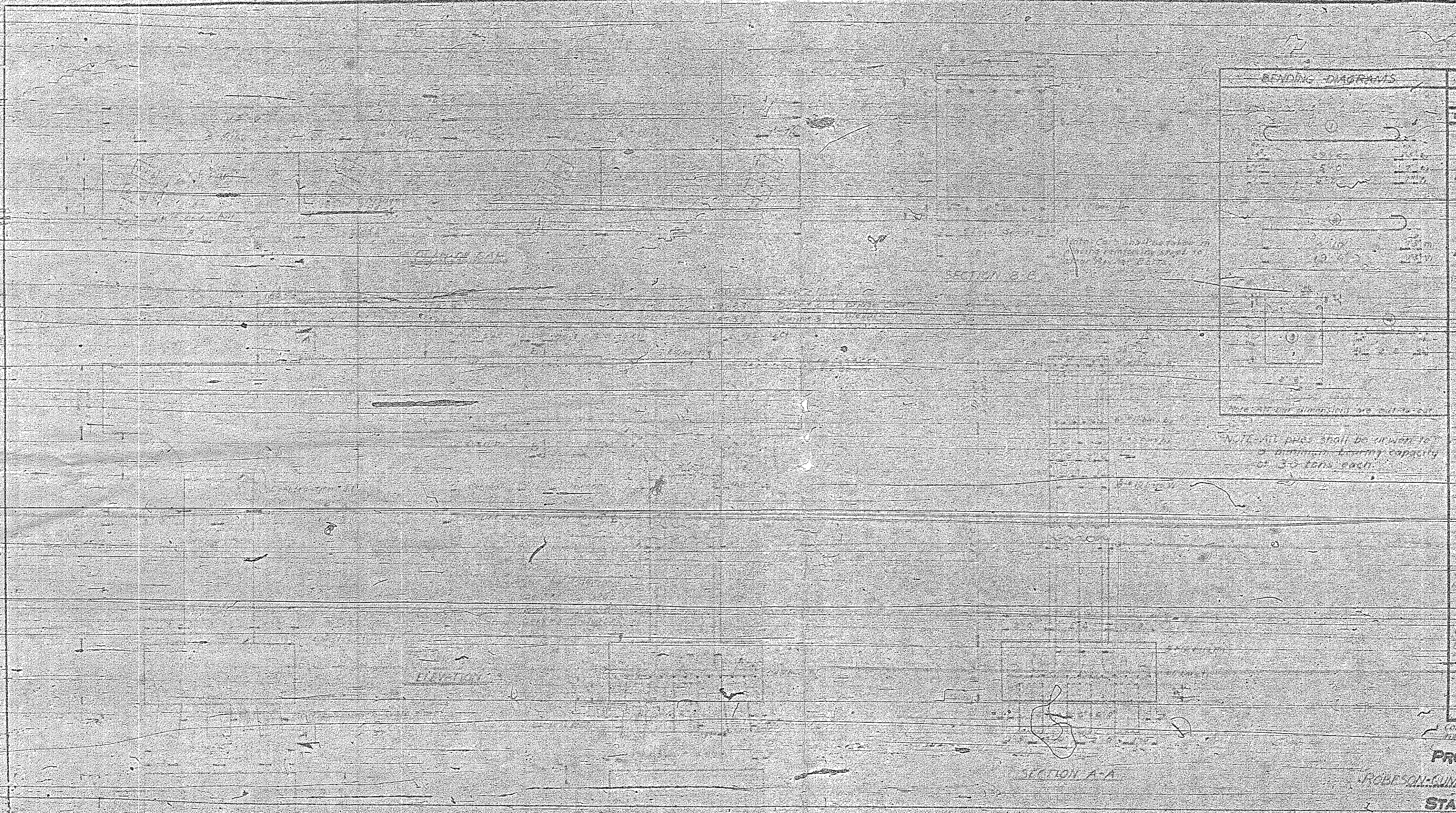
ELEVATION OF WALL FACE - END BENTS NO. 1 & NO. 2

NOTE: Piles shall be driven to a minimum bearing capacity of 24 tons each.

Concrete displaced by pile needs has been deducted.

PROJECT NO. 81  
 ROBERTSON, CUMBERLAND COU  
 STATION: 6+0

W V U T S R Q P O N M L K J I H G F E D C B A



PROJECT NO.	DATE
1	11-1-52
BY	SCALE
EA	1/4" = 1'-0"

**BILL OF MATERIALS**  
FOR ONE BENT

BAR NO.	SIZE	TYPE	LENGTH
1	1/2"	St.	10'-0"
2	3/8"	St.	10'-0"
3	1/2"	St.	10'-0"
4	1/2"	St.	10'-0"
5	1/2"	St.	10'-0"
6	1/2"	St.	10'-0"
7	1/2"	St.	10'-0"
8	1/2"	St.	10'-0"
9	1/2"	St.	10'-0"
10	1/2"	St.	10'-0"
11	1/2"	St.	10'-0"
12	1/2"	St.	10'-0"
13	1/2"	St.	10'-0"
14	1/2"	St.	10'-0"
15	1/2"	St.	10'-0"
16	1/2"	St.	10'-0"
17	1/2"	St.	10'-0"
18	1/2"	St.	10'-0"
19	1/2"	St.	10'-0"
20	1/2"	St.	10'-0"
21	1/2"	St.	10'-0"
22	1/2"	St.	10'-0"
23	1/2"	St.	10'-0"
24	1/2"	St.	10'-0"
25	1/2"	St.	10'-0"
26	1/2"	St.	10'-0"
27	1/2"	St.	10'-0"
28	1/2"	St.	10'-0"
29	1/2"	St.	10'-0"
30	1/2"	St.	10'-0"
31	1/2"	St.	10'-0"
32	1/2"	St.	10'-0"
33	1/2"	St.	10'-0"
34	1/2"	St.	10'-0"
35	1/2"	St.	10'-0"
36	1/2"	St.	10'-0"
37	1/2"	St.	10'-0"
38	1/2"	St.	10'-0"
39	1/2"	St.	10'-0"
40	1/2"	St.	10'-0"
41	1/2"	St.	10'-0"
42	1/2"	St.	10'-0"
43	1/2"	St.	10'-0"
44	1/2"	St.	10'-0"
45	1/2"	St.	10'-0"
46	1/2"	St.	10'-0"
47	1/2"	St.	10'-0"
48	1/2"	St.	10'-0"
49	1/2"	St.	10'-0"
50	1/2"	St.	10'-0"

NOTE: All bars shall be drawn to a minimum bending capacity of 30 tons each.

CONCRETE TO BE PLACED IN PLACE  
AND CURED BY THE CONTRACTOR  
AT HIS EXPENSE.  
CONCRETE TO BE PLACED IN PLACE  
AND CURED BY THE CONTRACTOR  
AT HIS EXPENSE.  
CONCRETE TO BE PLACED IN PLACE  
AND CURED BY THE CONTRACTOR  
AT HIS EXPENSE.

PROJECT NO. 11-1-52

ROBEYSON-SUMMERS BLVD. COVINGTON

STATION: 1+00 TO 1+100