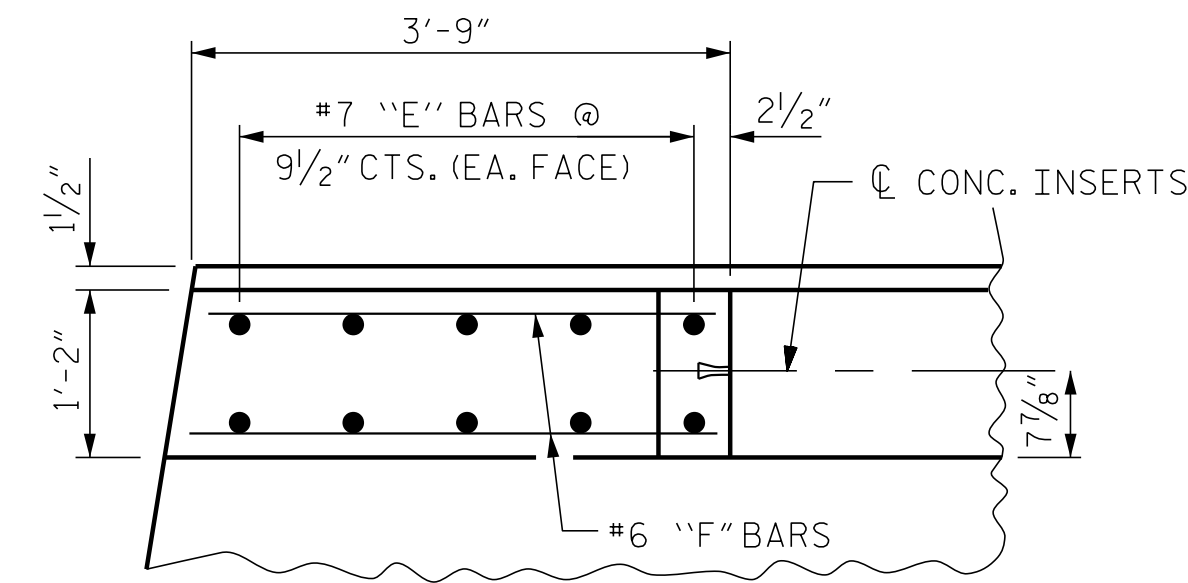
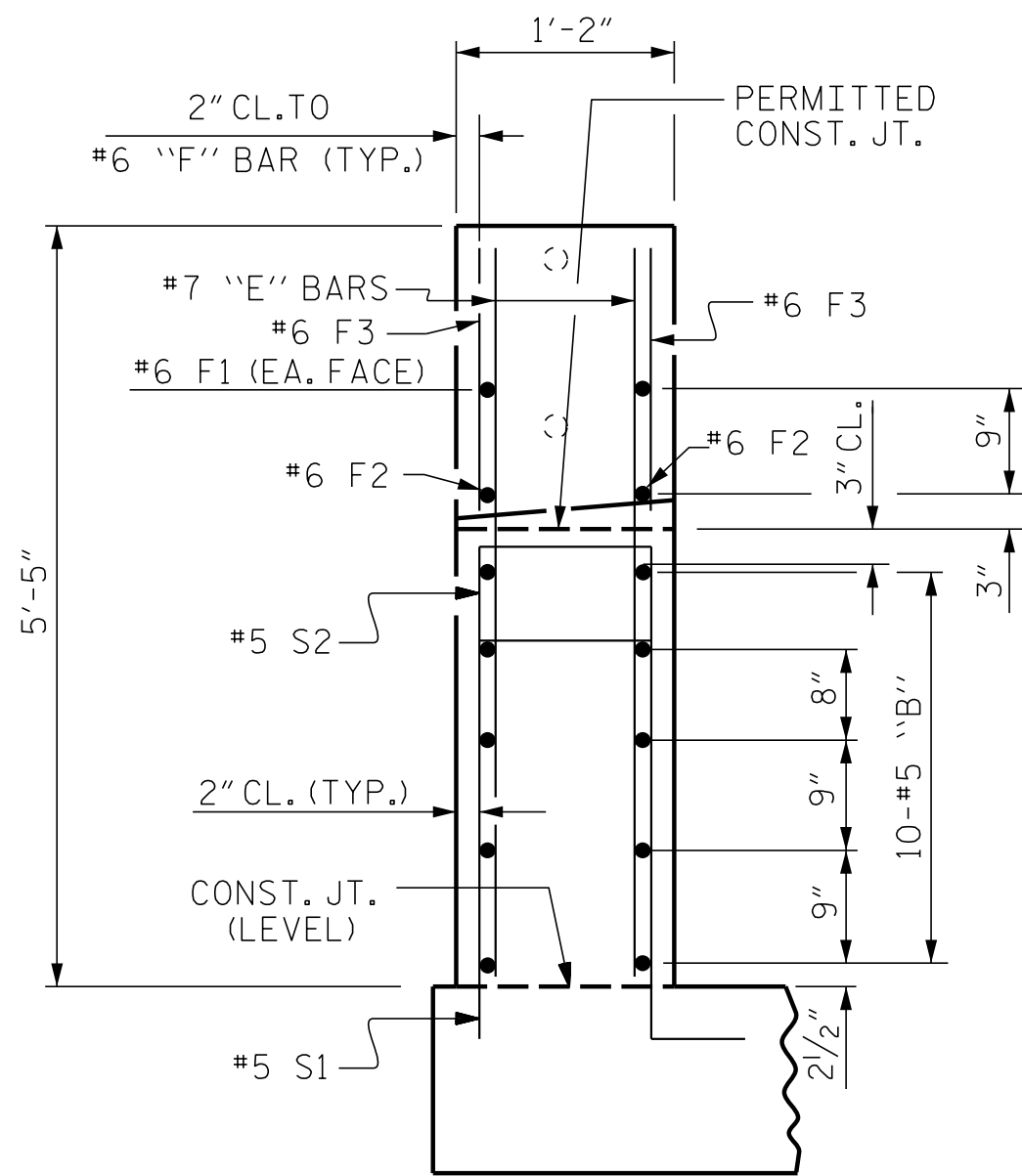


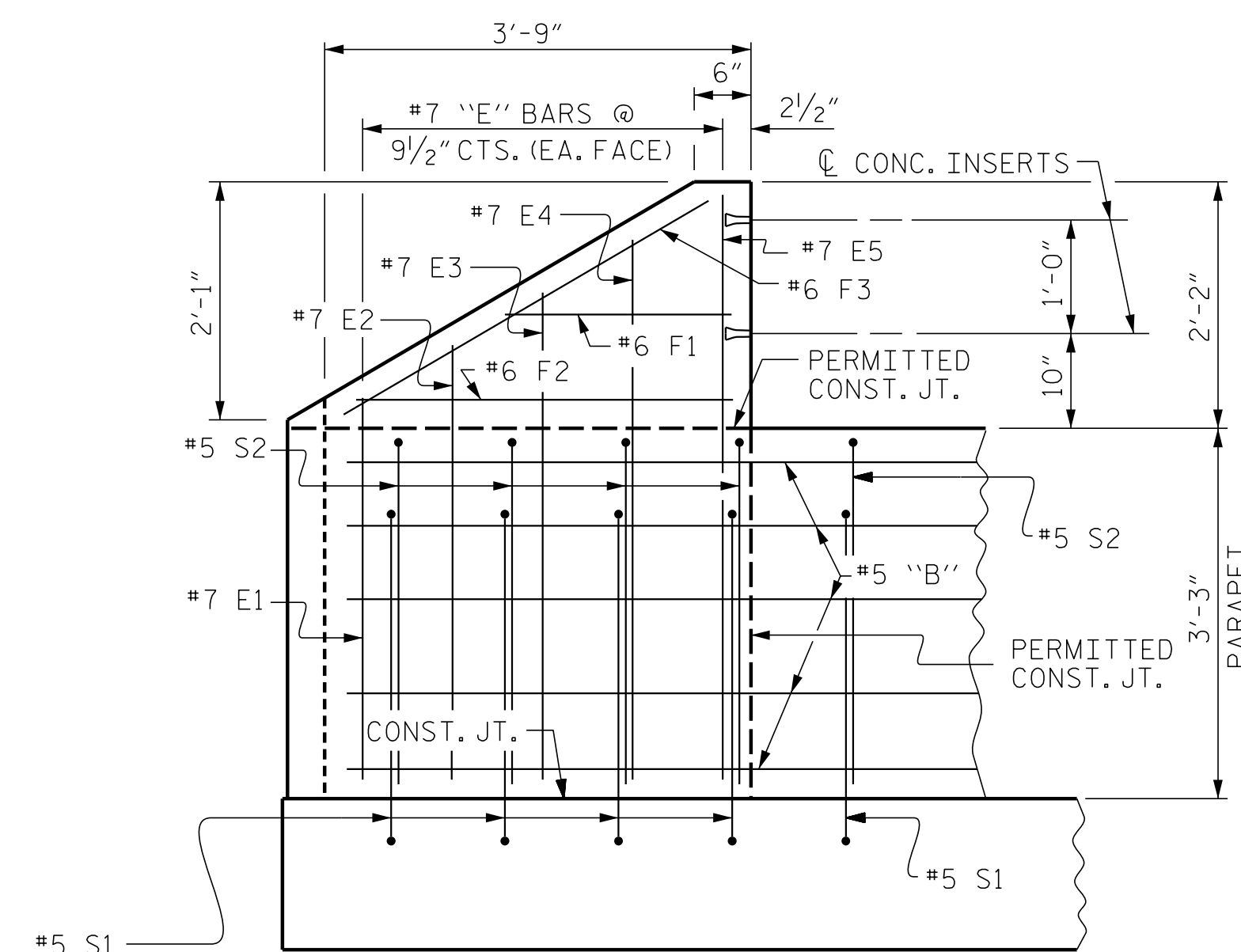
PLAN OF PARAPET



PLAN OF END POST



END VIEW

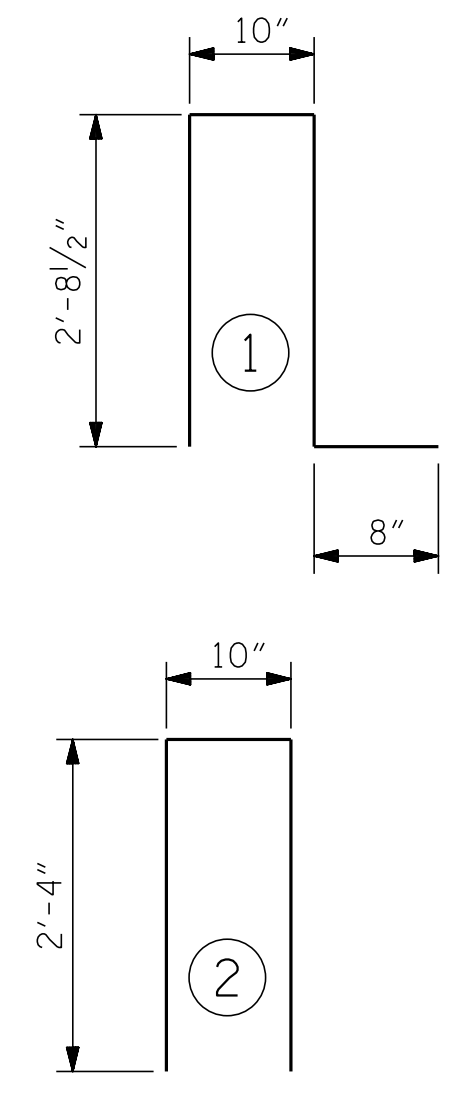


ELEVATION

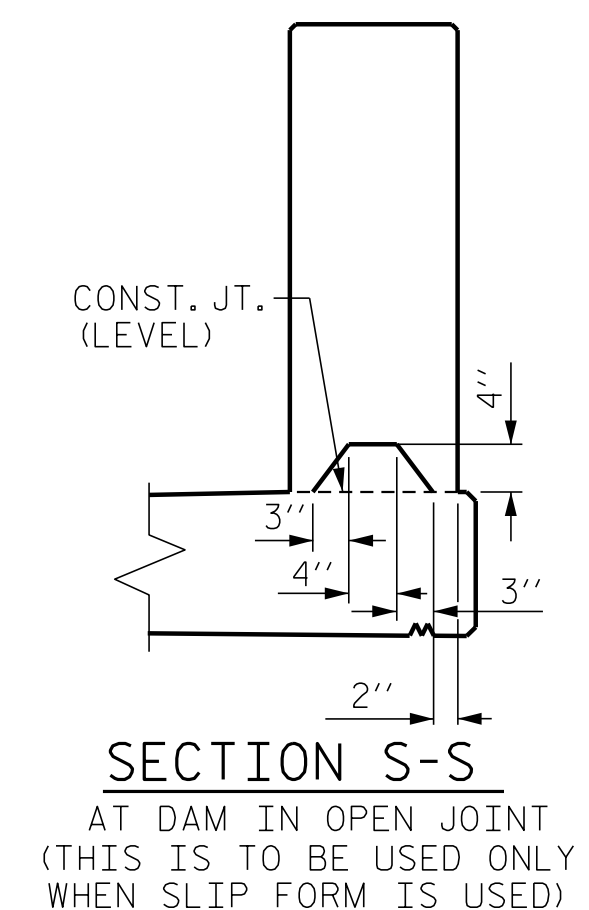
PARAPET AND END POST FOR TWO BAR RAIL

FOR GUARDRAIL ANCHORAGE DETAILS AND LOCATION, SEE "GUARDRAIL ANCHORAGE DETAILS FOR METAL RAILS" SHEET.

BAR TYPE		BILL OF MATERIAL FOR PARAPETS AND 4 END POSTS					
BAR NO.	SIZE	TYPE	LENGTH	WEIGHT			
* B1	40	#5	STR	14'-11"	622		
* B2	60	#5	STR	26'-9"	1674		
* B3	20	#5	STR	27'-9"	579		
* B4	100	#5	STR	26'-5"	2755		
* B5	40	#5	STR	11'-5"	476		
* E1	8	#7	STR	3'-3"	53		
* E2	8	#7	STR	3'-9"	61		
* E3	8	#7	STR	4'-3"	69		
* E4	8	#7	STR	4'-9"	78		
* E5	8	#7	STR	5'-1"	83		
* F1	8	#6	STR	1'-10"	22		
* F2	8	#6	STR	3'-0"	36		
* F3	8	#6	STR	3'-4"	40		
* S1	580	#5	1	6'-11"	4184		
* S2	580	#5	2	5'-6"	3327		
					* EPOXY COATED REINFORCING STEEL	14,059 LBS.	
					CLASS "AA" CONCRETE	82.2 C.Y.	
					1'-2" x 3'-3" CONCRETE PARAPET	579.55 L.F.	

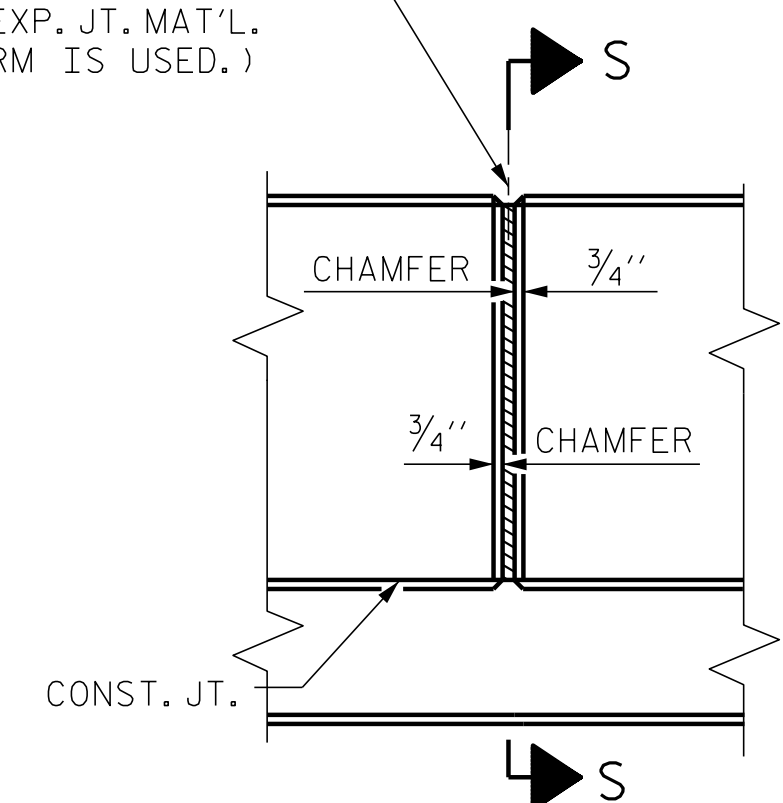


BAR DIMENSIONS ARE OUT TO OUT.



SECTION S-S AT DAM IN OPEN JOINT (THIS IS TO BE USED ONLY WHEN SLIP FORM IS USED)

1/2" EXP. JT. MAT'L HELD IN PLACE WITH GALVANIZED NAILS. (NOTE: OMIT EXP. JT. MAT'L WHEN SLIP FORM IS USED.)



ELEVATION AT JOINTS IN PARAPET

PROJECT NO. I-5506

WAKE COUNTY

STATION: 50+61.09 -L-

SHEET 2 OF 2

ENGINEER OF RECORD:
Gregory M. Olland
 NORTH CAROLINA PROFESSIONAL ENGINEER
 SEAL 37400
 GREGORY M. OLLAND
 7/31/2017
 WETHERILL ENGINEERING
 1223 Jones Franklin Rd.
 Raleigh, N.C. 27606
 Bus: 919 851 8077
 Fax: 919 851 8107
 LICENSE NO. F-0377

STATE OF NORTH CAROLINA
 DEPARTMENT OF TRANSPORTATION
 RALEIGH
 1'-2" x 3'-3"
 CONCRETE PARAPET
 FOR
 2 BAR METAL RAIL

REVISIONS						SHEET NO.
NO.	BY:	DATE:	NO.	BY:	DATE:	S01-25
1			3			TOTAL SHEETS
2			4			46

DOCUMENT NOT CONSIDERED FINAL UNLESS ALL SIGNATURES COMPLETED

\$FILE\$
\$DATE\$
\$TIME\$

DRAWN BY : D. HODGE DATE : 8/16
 CHECKED BY : B.C. HUNT DATE : 10/16