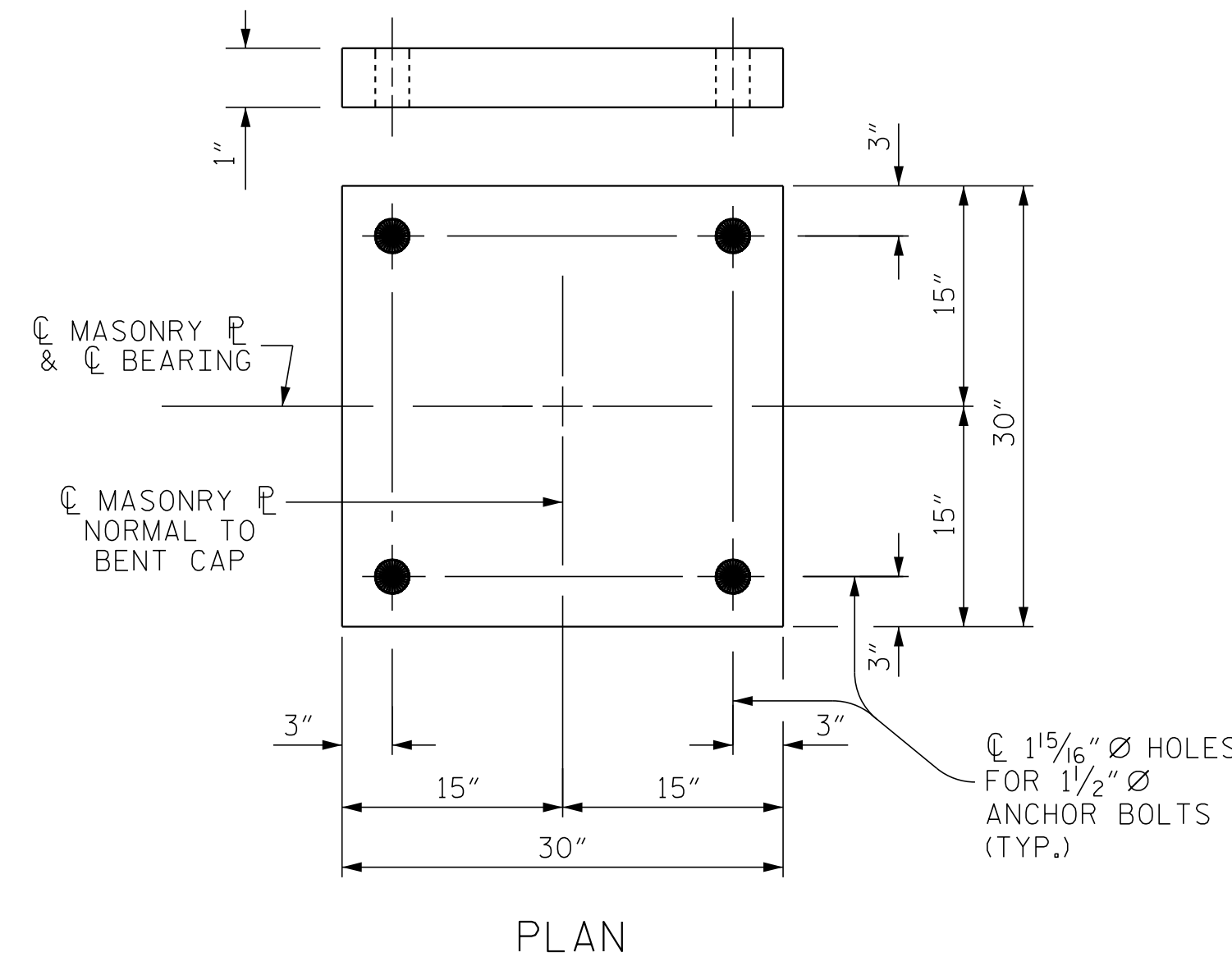
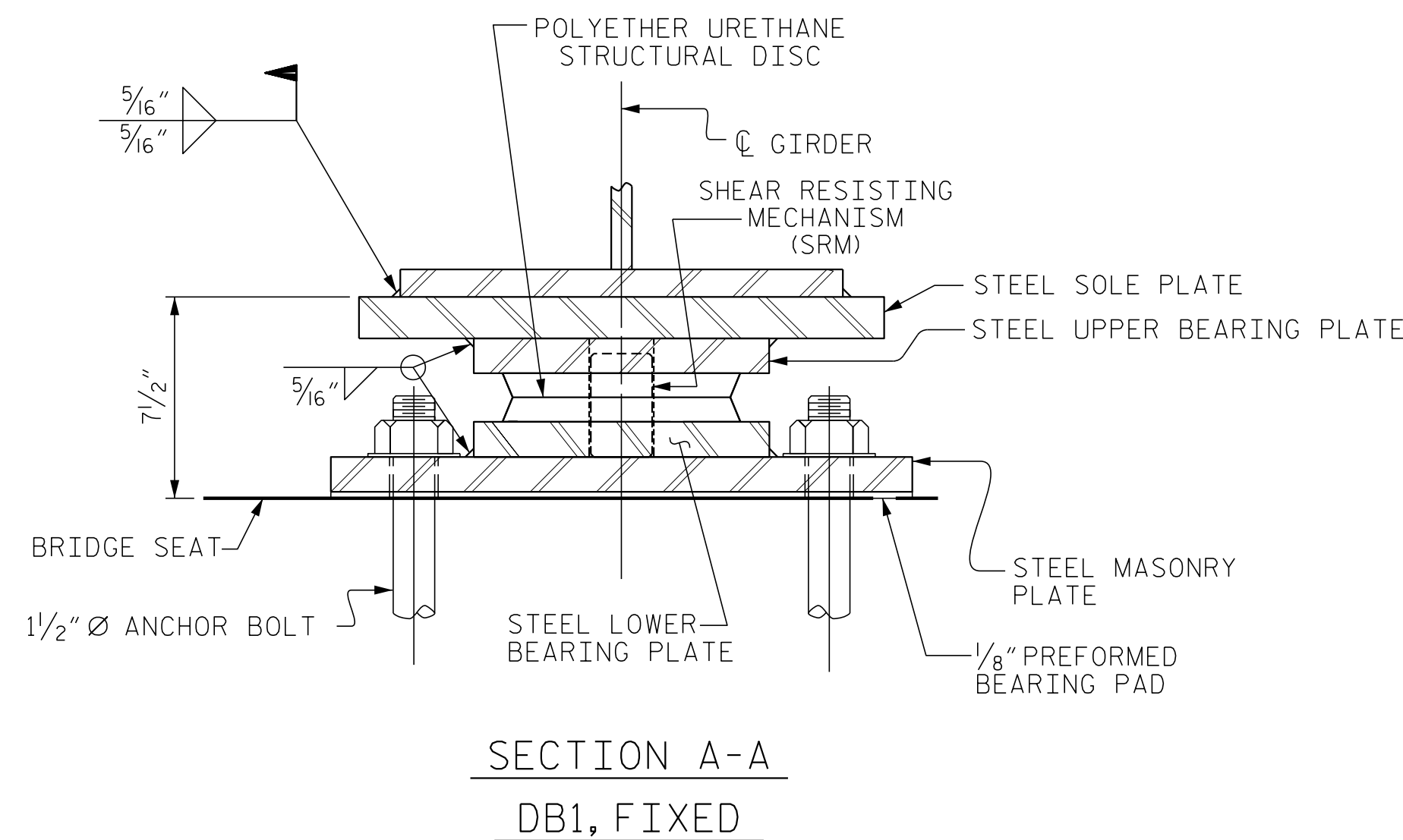


NOTE:
DIMENSIONS "W" AND "T" SHALL BE DETERMINED BY THE BEARING MANUFACTURER.

SOLE PLATE DETAILS



MASONRY PLATE DETAILS

NOTES

- FOR DISC BEARINGS, SEE SPECIAL PROVISIONS.
- ALL BEARING PLATES SHALL BE AASHTO M270 GRADE 50W OR GRADE 50.
- AT ALL POINTS OF SUPPORT, NUTS FOR ANCHOR BOLTS SHALL BE FINGER-TIGHTENED PLUS AN ADDITIONAL 1/4 TURN. THE THREAD OF THE NUT AND BOLT SHALL THEN BE BURRED WITH A SHARP POINTED TOOL.
- WHEN WELDING THE SOLE PLATE TO THE GIRDER, USE TEMPERATURE INDICATING WAX PENS, OR OTHER SUITABLE MEANS, TO ENSURE THAT THE TEMPERATURE OF THE BEARING DOES NOT EXCEED 250°F. TEMPERATURES ABOVE THIS MAY DAMAGE THE TFE OR URETHANE DISC.
- SOLE PLATES SHOULD BE WELDED TO GIRDER FLANGES BEFORE FALSEWORK IS PLACED.
- ALL SURFACES OF BEARING PLATES SHALL BE SMOOTH AND STRAIGHT.
- FOR THERMAL SPRAYED COATINGS (METALLIZATION), SEE SPECIAL PROVISIONS.
- THE MINIMUM ROTATIONAL CAPACITY FOR ALL BEARINGS SHALL BE 0.02 RADIAN.

PROJECT NO. I-5506
WAKE COUNTY
 STATION: 50+61.09 -L-

\$FILE\$ \$DATE\$ \$TIME\$

DRAWN BY: D. HODGE DATE: 8/16
 CHECKED BY: B.C. HUNT DATE: 10/16

DESIGNATIONS		LOCATION	NUMBER OF BEARINGS	UNFACTORED VERTICAL LOAD (KIPS)			FACTORED HORIZONTAL LOAD (KIPS)	ONE-WAY MOVEMENT (IN.)
BEARINGS	MASONRY			DEAD	LIVE			
DB1 (FIXED)	M1	BENT 1	10	461	57	323	170	0.0

ENGINEER OF RECORD:
Gregory M. Olland
 NORTH CAROLINA PROFESSIONAL ENGINEER
 SEAL 37400
 GREGORY M. OLLAND
 7/31/2017
 WETHERILL ENGINEERING
 1223 Jones Franklin Rd.
 Raleigh, N.C. 27606
 Bus: 919 851 8077
 Fax: 919 851 8107
 LICENSE NO. F-0377

STATE OF NORTH CAROLINA
 DEPARTMENT OF TRANSPORTATION
 RALEIGH

DISC BEARING DETAILS

DOCUMENT NOT CONSIDERED FINAL
 UNLESS ALL SIGNATURES COMPLETED

REVISIONS						SHEET NO.
NO.	BY:	DATE:	NO.	BY:	DATE:	
1			3			TOTAL SHEETS
2			4			46