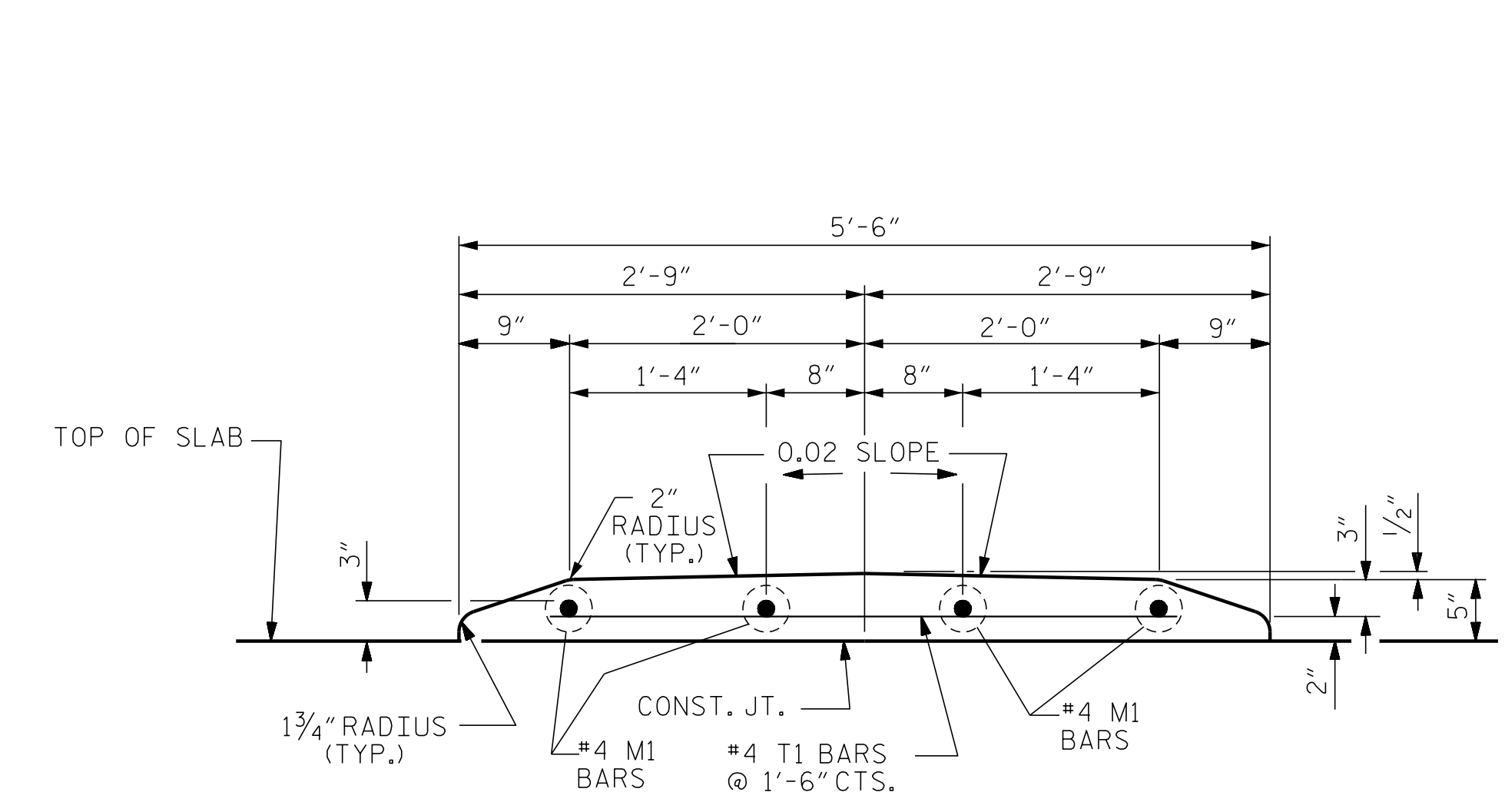
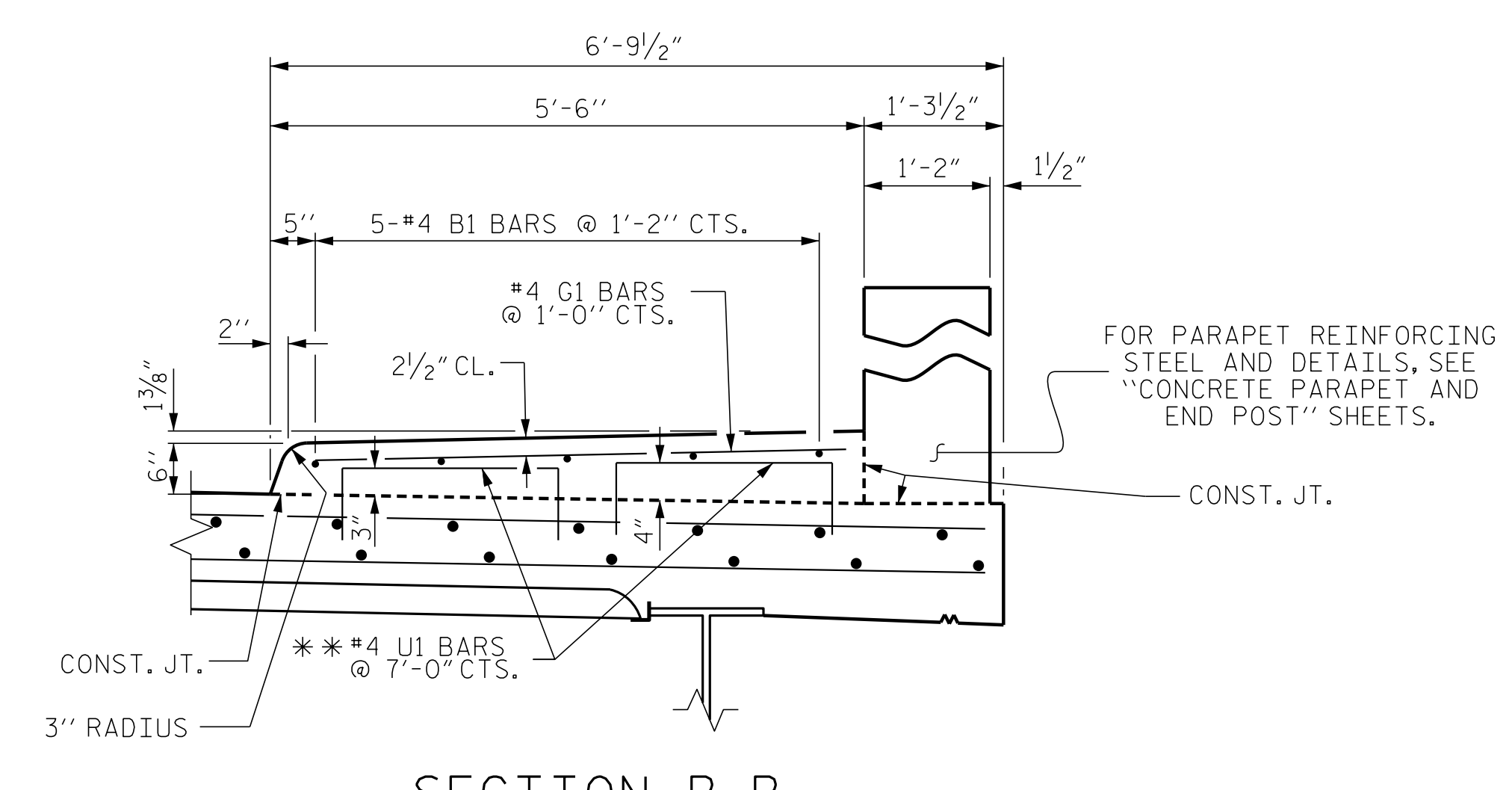


PLAN OF CONCRETE MEDIAN AND SIDEWALK



SECTION A-A

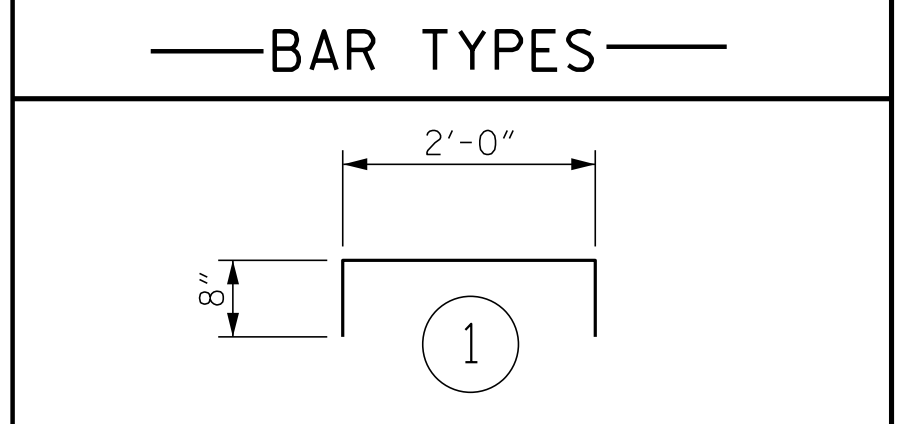


SECTION B-B

\*\* #4 U1 BARS MAY BE PUSHED INTO GREEN CONCRETE AFTER SPAN HAS BEEN SCREEDED OFF IF NOT SLIP FORMING PARAPET, IF PARAPET IS TO BE SLIP FORMED, #4 U1 BARS SHALL BE DRILLED AND GROUTED.

BILL OF MATERIAL FOR CONCRETE MEDIAN					
BAR	NO.	SIZE	TYPE	LENGTH	WEIGHT
* M1	44	#4	STR	28'-10"	847
* T1	193	#4	STR	4'-2"	537
* EPOXY COATED REINFORCING STEEL					1,384 LBS.
CLASS "AA" CONCRETE					23.4 C.Y.

BILL OF MATERIAL FOR SIDEWALK					
BAR	NO.	SIZE	TYPE	LENGTH	WEIGHT
* B1	55	#4	STR	28'-10"	1059
* G1	290	#4	STR	5'-0"	969
* U1	84	#4	1	3'-4"	187
* EPOXY COATED REINFORCING STEEL					2,215 LBS.
CLASS "AA" CONCRETE					35.5 C.Y.



ALL BAR DIMENSIONS ARE OUT TO OUT

**NOTES:**  
 GROOVED CONTRACTION JOINTS 1/2" IN DEPTH, SHALL BE TOOLED IN ALL EXPOSED FACES OF THE SIDEWALK AND CONCRETE MEDIAN IN ACCORDANCE WITH ARTICLE 825-10(B) OF THE STANDARD SPECIFICATIONS. THE CONTRACTION JOINTS SHALL BE LOCATED AT A SPACING OF 8 FEET TO 10 FEET.

NO SEPARATE MEASUREMENT OR PAYMENT WILL BE MADE FOR MATERIALS OR LABOR REQUIRED TO CONSTRUCT THE SIDEWALK OR CONCRETE MEDIAN. THE ENTIRE COST OF THIS WORK SHALL BE INCLUDED IN THE UNIT BID PRICE FOR REINFORCED CONCRETE DECK SLAB.

ALL STEEL IN THE SIDEWALK AND CONCRETE MEDIAN SHALL BE EPOXY COATED.

PROJECT NO. I-5506  
WAKE COUNTY  
 STATION: 50+61.09 -L-

ENGINEER OF RECORD:  
 Gregory M. Olland  
 NORTH CAROLINA PROFESSIONAL SEAL 37400  
 GREGORY M. OLLAND  
 7/31/2017  
 WETHERILL ENGINEERING

STATE OF NORTH CAROLINA  
 DEPARTMENT OF TRANSPORTATION  
 RALEIGH  
 SUPERSTRUCTURE  
 SIDEWALK AND CONCRETE MEDIAN DETAILS

REVISIONS					
NO.	BY:	DATE:	NO.	BY:	DATE:
1			3		
2			4		

SHEET NO. S01-14  
 TOTAL SHEETS 46

DRAWN BY: D. HODGE DATE: 8/16  
 CHECKED BY: B.C. HUNT DATE: 10/16

DOCUMENT NOT CONSIDERED FINAL UNLESS ALL SIGNATURES COMPLETED