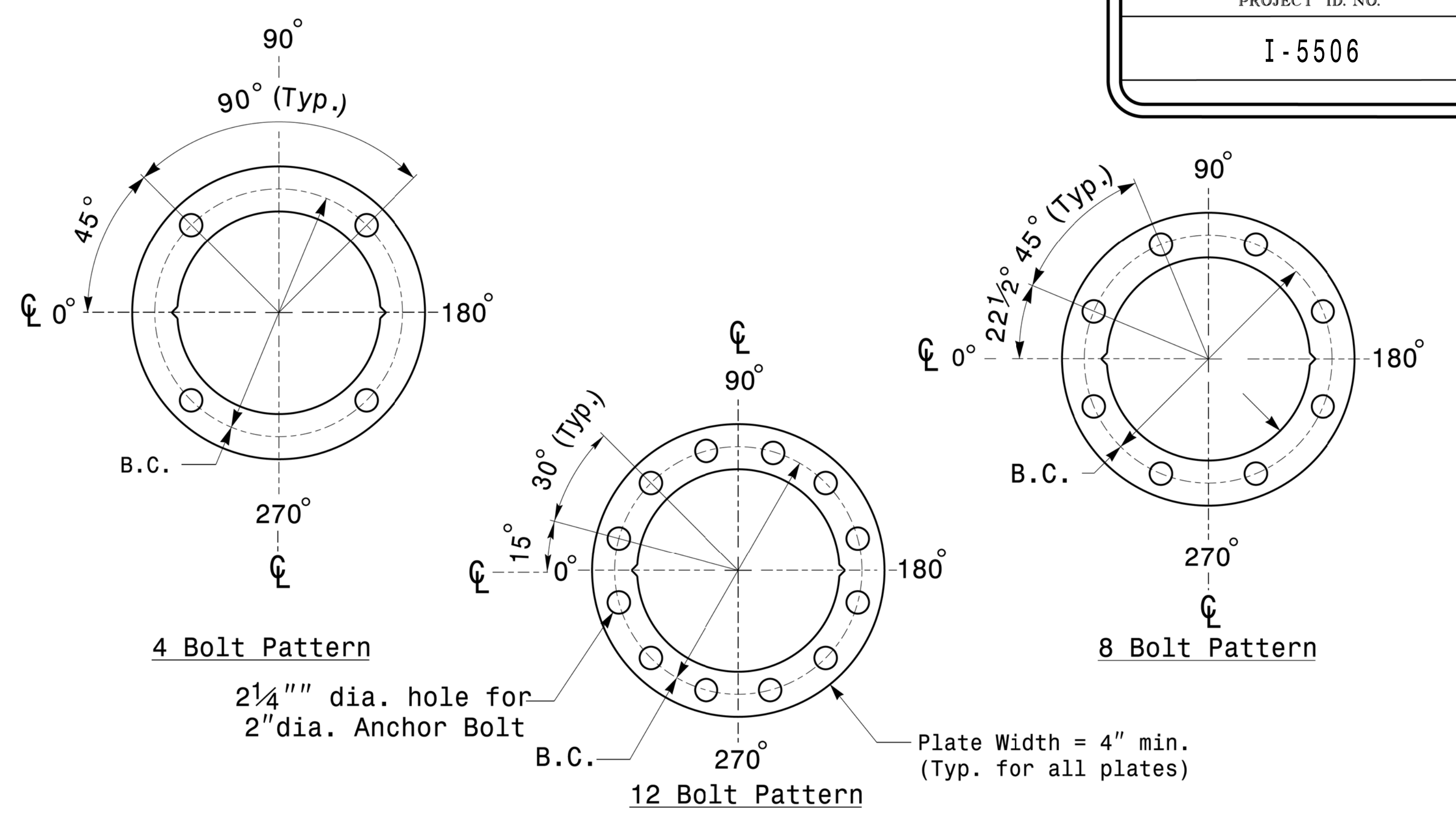


MFG _____	MFG. DATE: MM/YY _____
SHAFT D/T/L/Y _____	_____
ARM-A D/T/L/Y _____	_____
ARM-B D/T/L/Y _____	_____
A.B. DIA./B.C./L/Y _____	_____
NCDOT SIG. INV. NO. _____	_____
NCDOT POLE NO. _____	_____

Shaft I.D. Tag
(Provide on Shaft of Strain Poles and Mast Arm Poles Shaft)

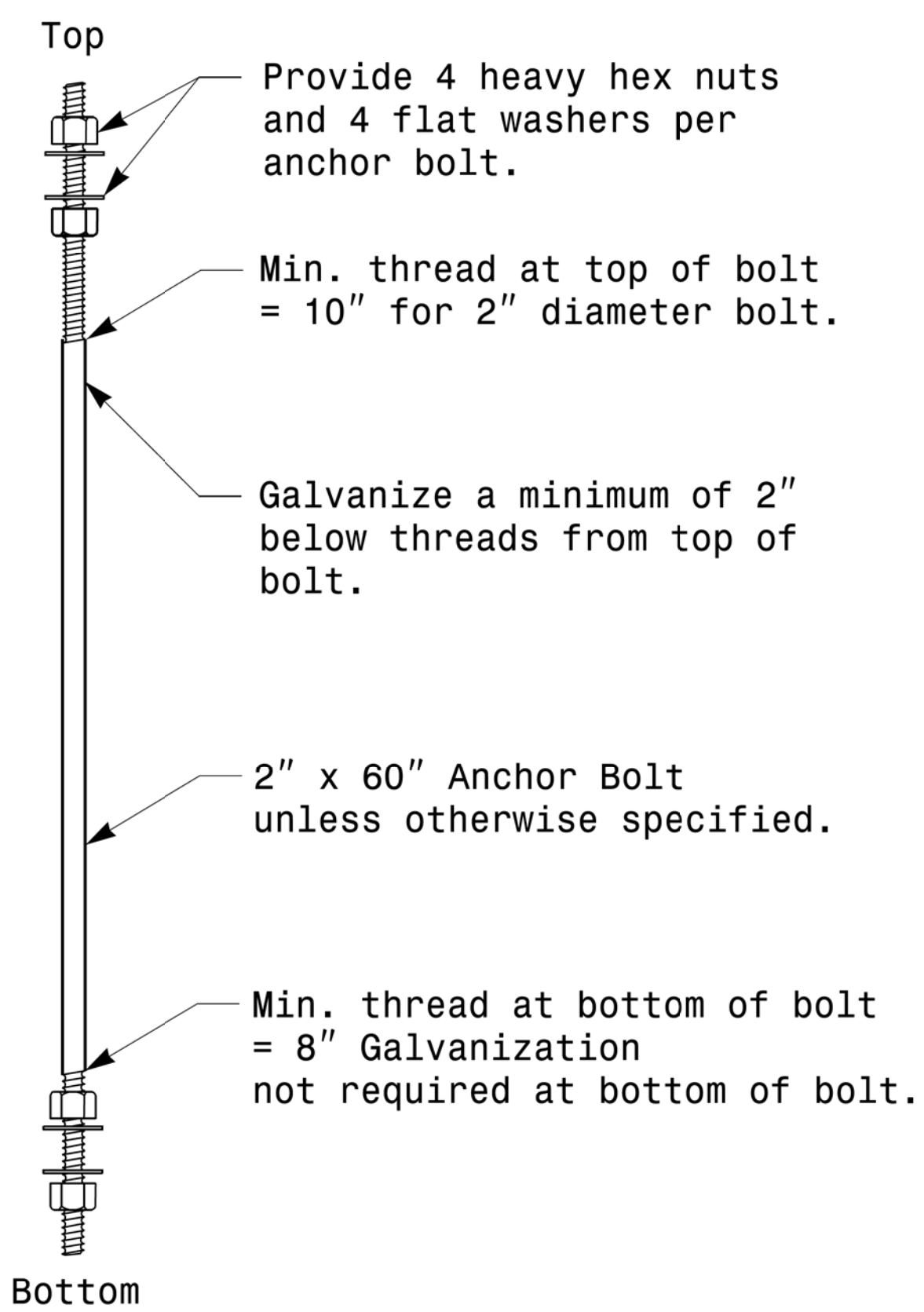
- Notes:
- 1) D= Diameter, T= Thickness, L= Length, Y= Yield Strength
 - 2) A.B. = Anchor Bolt
 - 3) B.C. = Bolt Circle of Anchor Bolts
 - 4) If Custom Design, use "NCDOT STANDARD" line for Signal Inv. Number and pole I.D. number
 - 5) See drawing M3 and M4 for mounting positions of I.D. tags.

Identification Tag Details

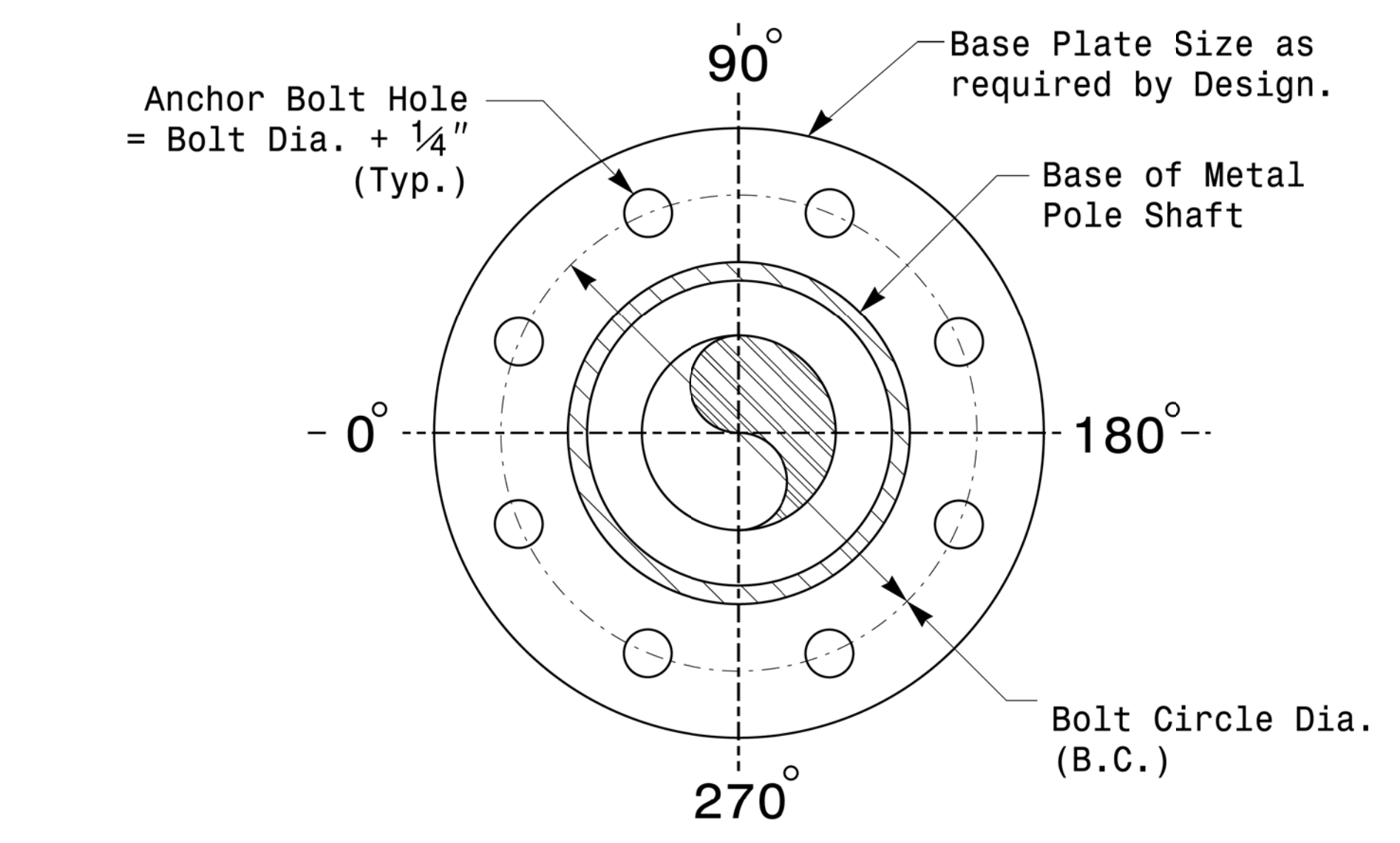


Construct Templates and Plates from 1/4" min. thick Steel. Galvanizing is not required.

Base Plate Template and Anchor Bolt Lock Plate Details



Anchor Bolt Detail



Note: Base plate may be circular, octagonal, square or rectangular in shape.

Typical Base Plate Detail

	<p>Typical Fabrication Details For All Metal Poles</p>		
	<p>PLAN DATE: OCTOBER 2017</p>	<p>DESIGNED BY: C.F. ANDREWS</p>	
<p>750 N. Greenfield Play, Garner, NC 27529</p>	<p>PREPARED BY: N. BITTING</p>	<p>REVISIONS</p>	<p>INIT. DATE</p>
<p>SCALE: NONE</p>	<p>DATE: 10/11/2017</p>	<p>SIGNATURE: Debesh C. Sarkar</p>	<p>DATE</p>

11-OCT-2017 08:30 5:41 PM 13500115 Signal SIG Design Section 16x2014 Sig.M2 Std. Fabrication Detail Is-All Poles.dgn