

**This electronic collection of documents is provided
for the convenience of the user
and is Not a Certified Document –**

**The documents contained herein were originally issued
and sealed by the individuals whose names and license
numbers appear on each page, on the dates appearing
with their signature on that page.**

**This file or an individual page
shall not be considered a certified document.**

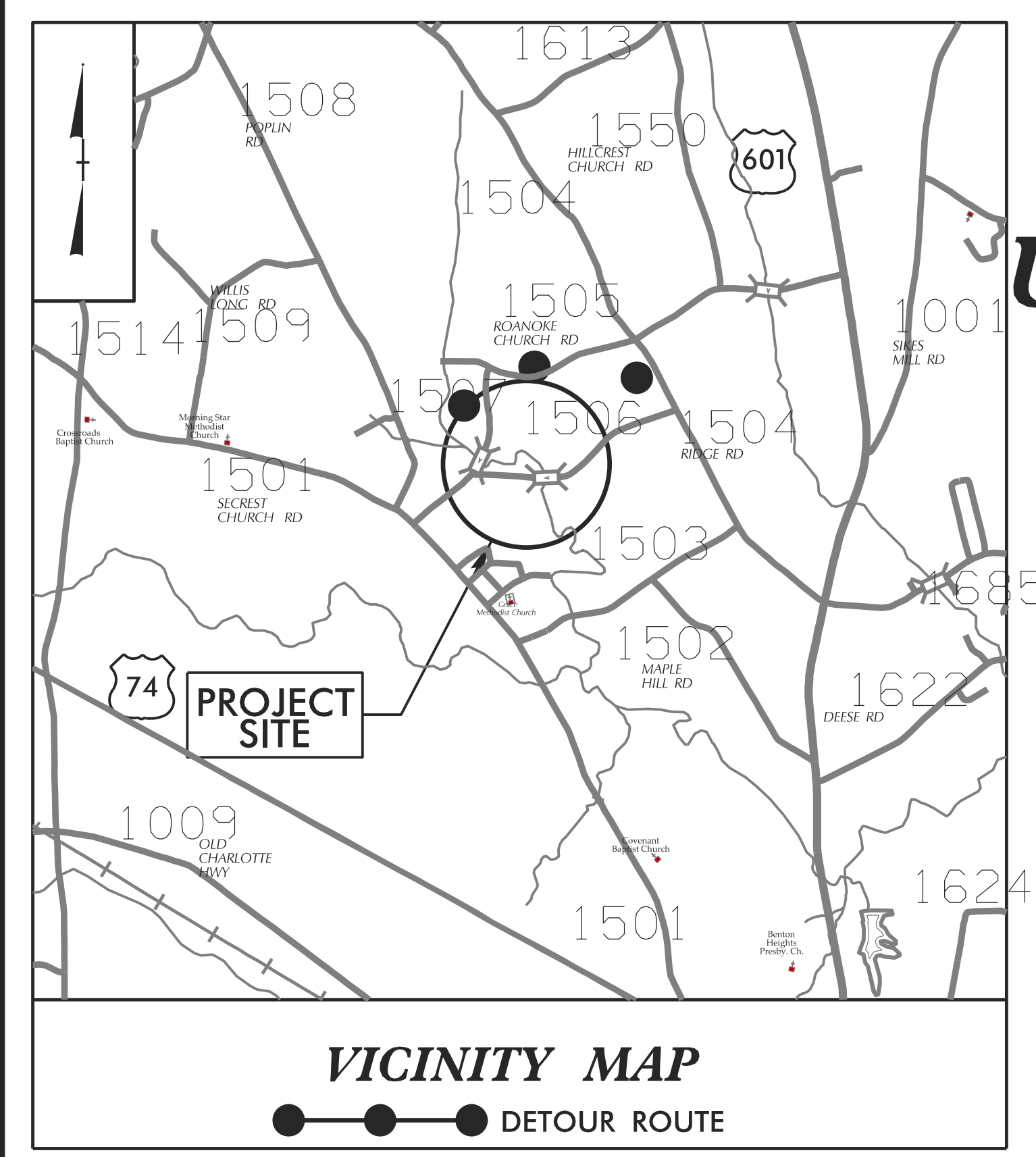
09/08/99

TIP PROJECT: B-5370

STATE OF NORTH CAROLINA
DIVISION OF HIGHWAYS

T.I.P. NO.	SHEET NO.
B-5370	UO-1

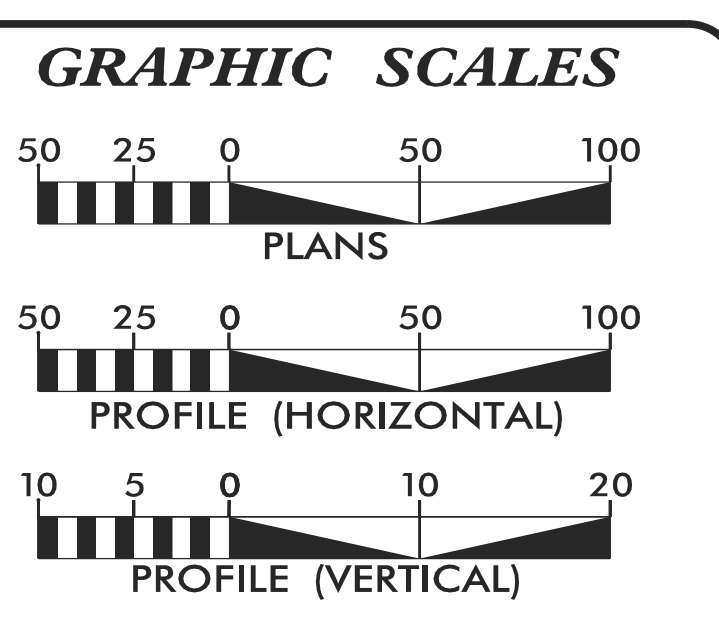
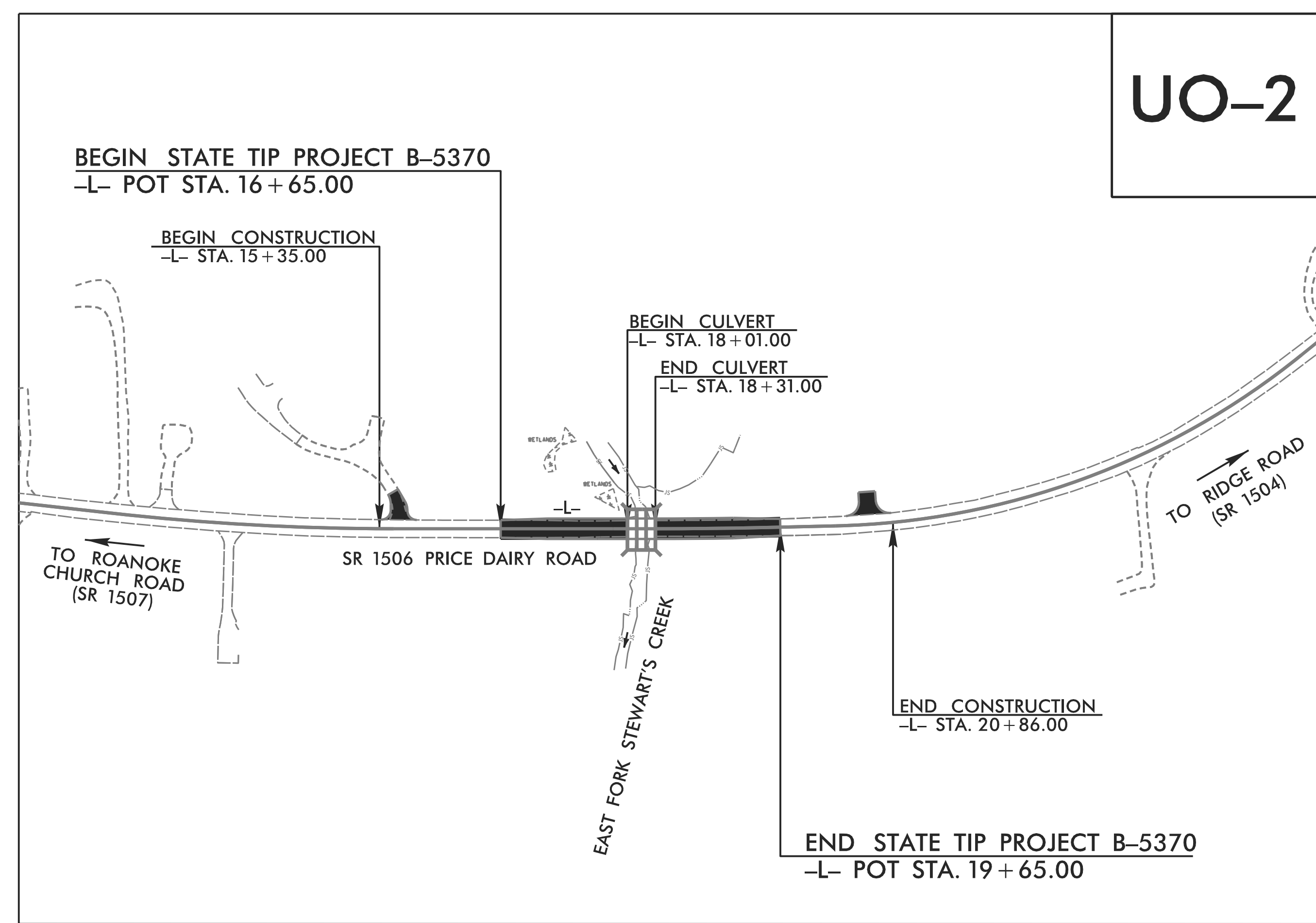
NOTE:
ALL UTILITY WORK SHOWN ON THIS SHEET IS DONE BY OTHERS.
NO PAYMENT WILL BE MADE TO THE CONTRACTOR FOR UTILITY WORK SHOWN ON THIS SHEET.



**UTILITIES BY OTHERS PLANS
UNION COUNTY**

**LOCATION: BRIDGE NO. 444 ON SR 1506 (PRICE DAIRY RD)
OVER EAST FORK STEWART'S CREEK**

TYPE OF WORK: POWER RELOCATION



INDEX OF SHEETS

SHEET NO.:	DESCRIPTION:
UO-1	TITLE SHEET
UO-02	UBO PLAN SHEET

UTILITY OWNERS WITH CONFLICTS

(A) POWER - UNION POWER COOPERATIVE

PREPARED IN THE OFFICE OF:

Cardno

CARDNO (NC), INC.
9800 SOUTHERN PINE BOULEVARD
SUITE 1
CHARLOTTE NC 28273
PHONE (704) 927-9700
FAX (704) 529-3272

STEVE TREXLER PROJECT UTILITY COORDINATOR

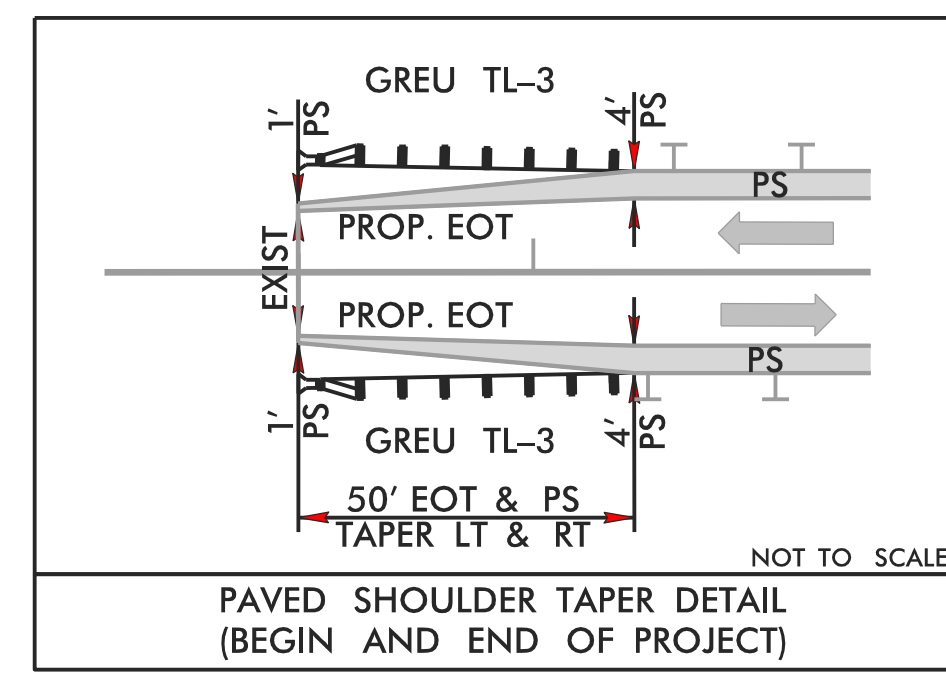
**DIVISION OF HIGHWAYS
UTILITIES UNIT**
1555 MAIL SERVICES CENTER
RALEIGH NC 27699-1555
PHONE (919) 707-6690
FAX (919) 250-4151

MICHAEL BRIGHT UTILITIES REGIONAL ENGINEER
DONALD HAMPTON UTILITIES ENGINEER
AMY DUPREE UTILITIES AREA COORDINATOR
GREG SEALY UTILITIES COORDINATOR

\$\$\$\$\$ SYSTEMS\$\$\$\$\$
\$\$\$\$\$ DGN\$\$\$\$\$
\$\$\$\$\$ USERNAME\$\$\$\$\$

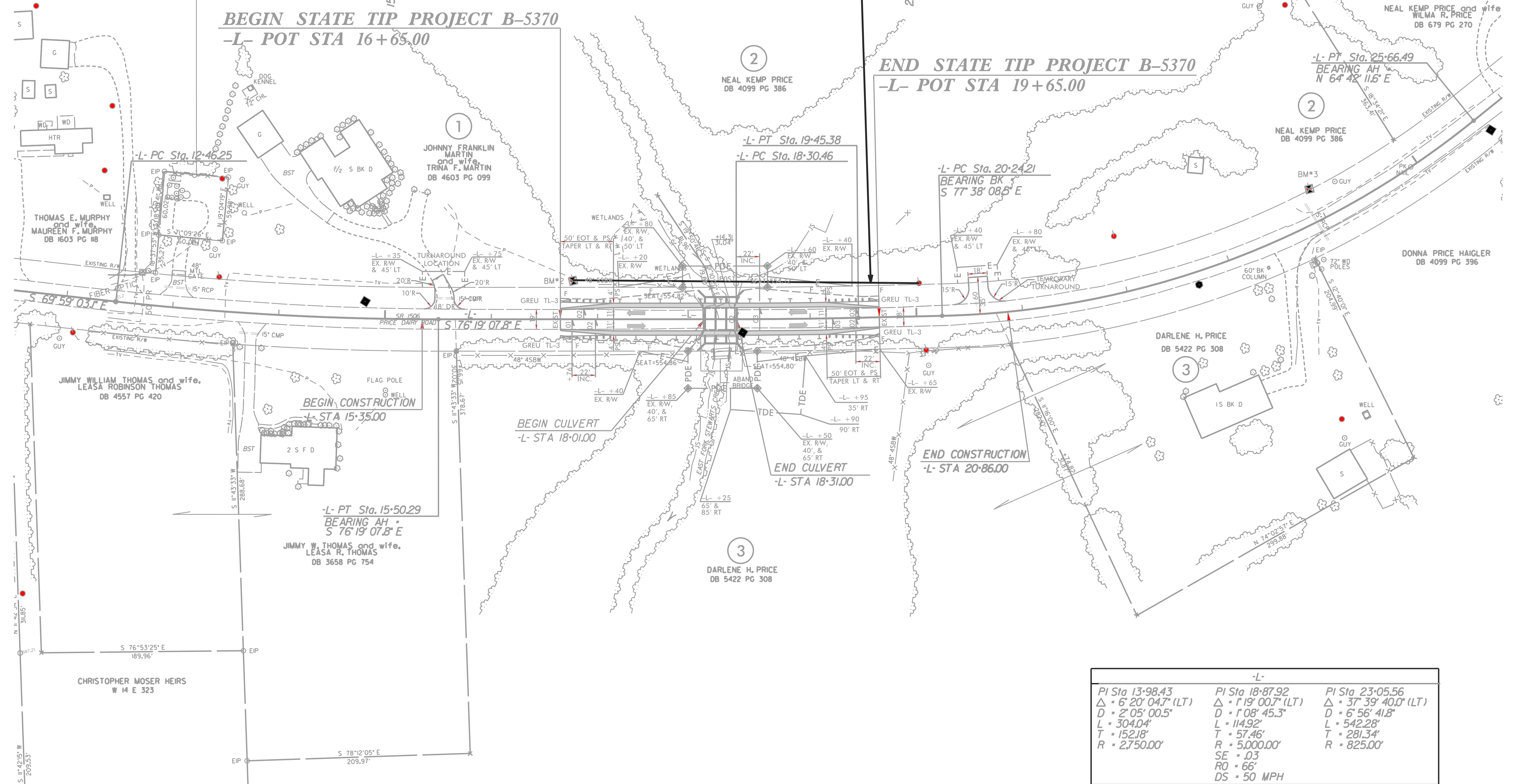
UTILITIES BY OTHERS

NOTE:
ALL UTILITY WORK SHOWN ON THIS SHEET WILL BE DONE BY OTHERS. NO PAYMENT WILL BE MADE TO THE CONTRACTOR FOR UTILITY WORK SHOWN ON THIS SHEET.



CROWN CASTLE
www.crowncastle.com
FOR LEASE 877 486-9377
FOR EMERGENCY 24 HOUR SERVICE 800 788-7011
CROWN BUSINESS UNIT NUMBER 876281
SITE ADDRESS: 811 PRICE DAIRY ROAD, MONROE NC 2810
SITE NAME: PRICE'S DAIRY ROAD

OVERHEAD POWER LINE TO BE DE-ENERGIZED DURING CONSTRUCTION OF CULVERT



-L-		
PI Sta 13-98.43	PI Sta 18-87.92	PI Sta 23-05.56
Δ = 6° 20' 04.7" (LT)	Δ = 1° 19' 00.7" (LT)	Δ = 37° 39' 40.0" (LT)
D = 2' 05' 00.5"	D = 1' 08' 45.3"	D = 6' 56' 41.8"
L = 304.04'	L = 114.92'	L = 542.28'
T = 152.18'	T = 57.46'	T = 281.34'
R = 2750.00'	R = 5000.00'	R = 825.00'
	SE = 03	
	RO = 66'	
	DS = 50 MPH	

5/14/99
CROWN CASTLE
www.crowncastle.com
FOR LEASE 877 486-9377
FOR EMERGENCY 24 HOUR SERVICE 800 788-7011
CROWN BUSINESS UNIT NUMBER 876281
SITE ADDRESS: 811 PRICE DAIRY ROAD, MONROE NC 2810
SITE NAME: PRICE'S DAIRY ROAD