

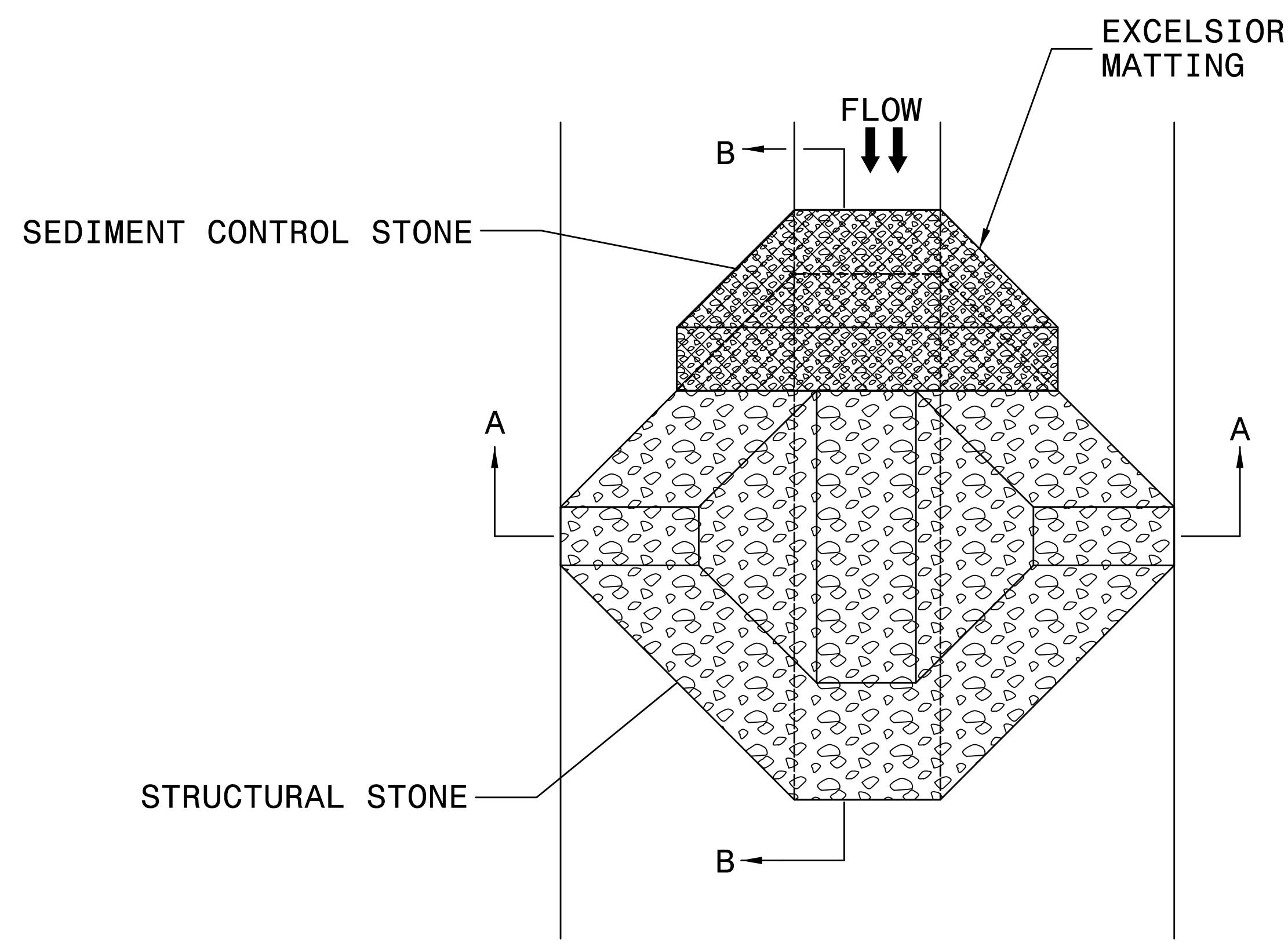
**This electronic collection of documents is provided
for the convenience of the user
and is Not a Certified Document –**

**The documents contained herein were originally issued
and sealed by the individuals whose names and license
numbers appear on each page, on the dates appearing
with their signature on that page.**

**This file or an individual page
shall not be considered a certified document.**

PROJECT REFERENCE NO. B-5405	SHEET NO. EC-2
RW SHEET NO.	
ROADWAY DESIGN ENGINEER	HYDRAULICS ENGINEER

TEMPORARY ROCK SILT CHECK TYPE 'A' WITH EXCELSIOR MATTING AND POLYACRYLAMIDE (PAM)



PLAN

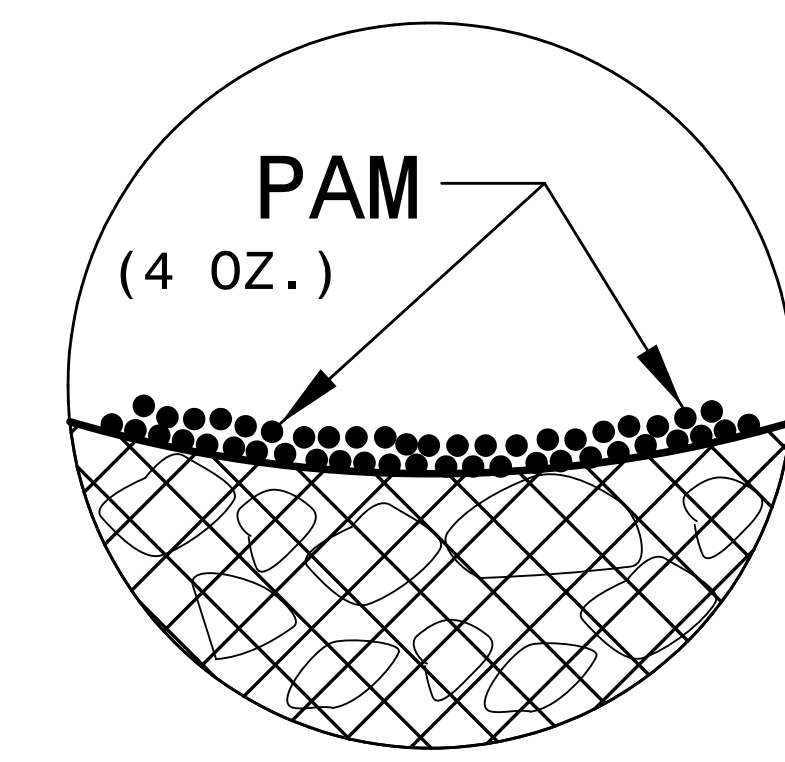
NOTES:

INSTALL TEMPORARY ROCK SILT CHECK TYPE A IN ACCORDANCE WITH ROADWAY STANDARD DRAWING NO. 1633.01.

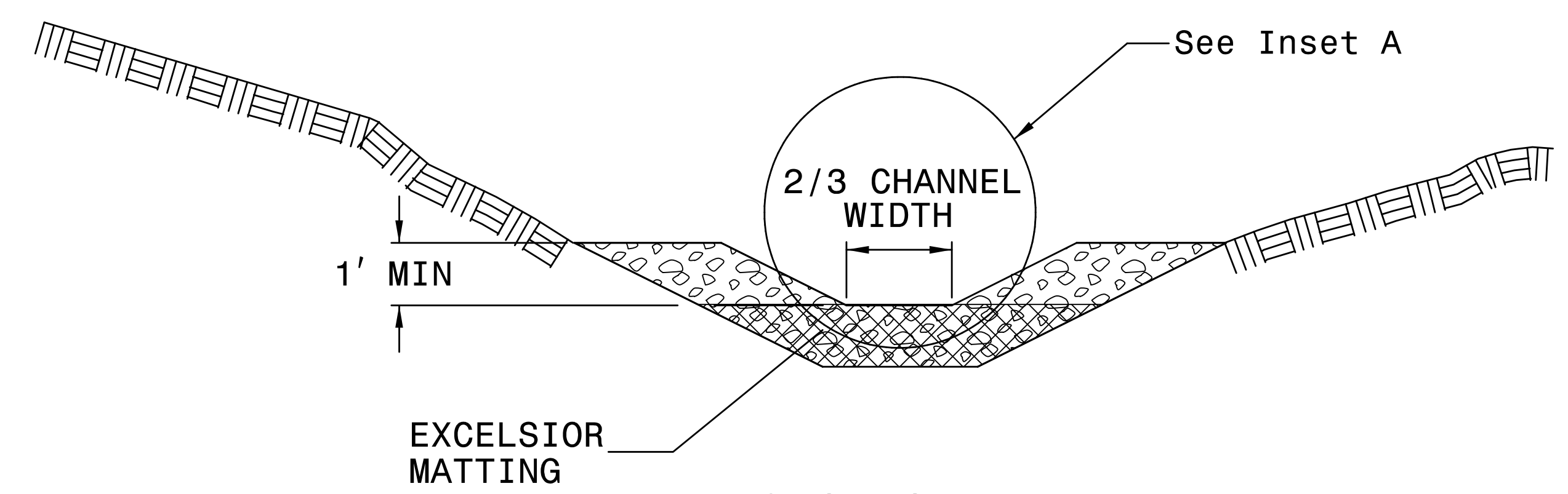
USE EXCELSIOR FOR MATTING MATERIAL AND ANCHOR MATTING SECTION AT TOP AND BOTTOM WITH CLASS B STONE.

PRIOR TO POLYACRYLAMIDE (PAM) APPLICATION, OBTAIN A SOIL SAMPLE FROM PROJECT LOCATION, AND FROM OFFSITE MATERIAL, AND ANALYZE FOR APPROPRIATE PAM FLOCCULANT TO BE APPLIED TO EACH ROCK SILT CHECK.

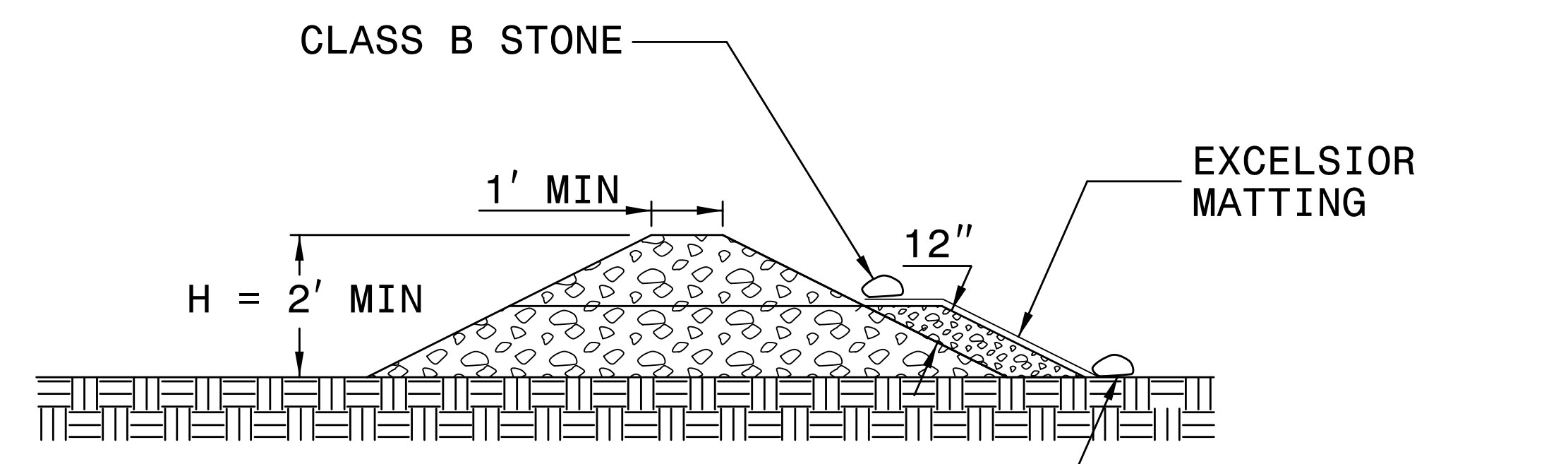
INITIALLY APPLY 4 OUNCES OF POLYACRYLAMIDE (PAM) TO TOP OF MATTING SECTION AND AFTER EVERY RAINFALL EVENT THAT EQUALS OR EXCEEDS 0.50 INCHES.



INSET A



SECTION A-A



SECTION B-B

NOT TO SCALE

DIVISION OF HIGHWAYS
STATE OF NORTH CAROLINA

PROJECT REFERENCE NO. <i>B-5405</i>	SHEET NO. <i>EC-3</i>
ROADWAY DESIGN ENGINEER	HYDRAULICS ENGINEER

SOIL STABILIZATION TIMEFRAMES

<i>SITE DESCRIPTION</i>	<i>STABILIZATION TIME</i>	<i>TIMEFRAME EXCEPTIONS</i>
PERIMETER DIKES, SWALES, DITCHES AND SLOPES	7 DAYS	NONE
HIGH QUALITY WATER (HQW) ZONES	7 DAYS	NONE
SLOPES STEEPER THAN 3:1	7 DAYS	IF SLOPES ARE 10' OR LESS IN LENGTH AND ARE NOT STEEPER THAN 2:1, 14 DAYS ARE ALLOWED.
SLOPES 3:1 OR FLATTER	14 DAYS	7 DAYS FOR SLOPES GREATER THAN 50' IN LENGTH.
ALL OTHER AREAS WITH SLOPES FLATTER THAN 4:1	14 DAYS	NONE, EXCEPT FOR PERIMETERS AND HQW ZONES.

LOCHNER

H. W. LOCHNER, INC.
2840 PLAZA PLACE, SUITE 202
RALEIGH, NC 27612
(919) 571-7111

NC License Number F-0159
1151 SE Cary Parkway
Suite 101
Cary, NC 27518
(919) 557-0929

ECOLOGICAL ENGINEERING

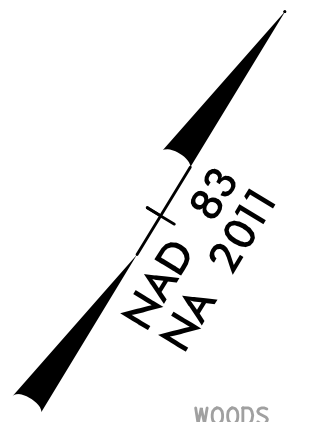
PROJECT REFERENCE NO. B-5405	SHEET NO. EC-04/CONST.04
R/W SHEET NO.	
ROADWAY DESIGN ENGINEER	HYDRAULICS ENGINEER

CLEARING AND GRUBBING
EROSION CONTROL FOR
CONSTRUCTION SHEET 4

 ENVIRONMENTALLY SENSITIVE AREA
SEE PROJECT SPECIAL PROVISIONS

-L-

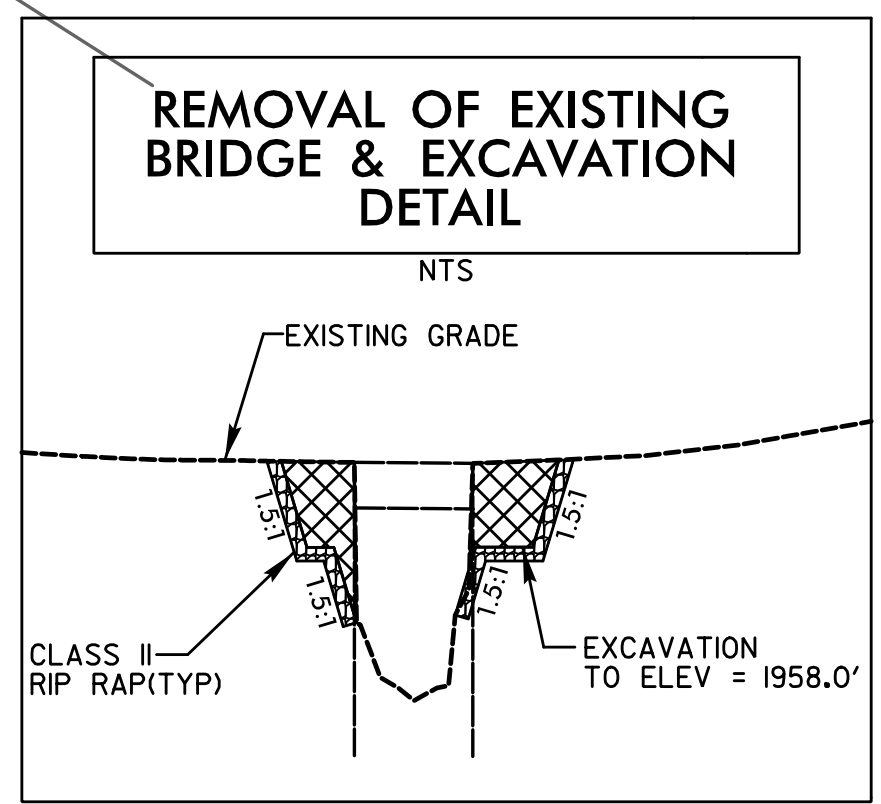
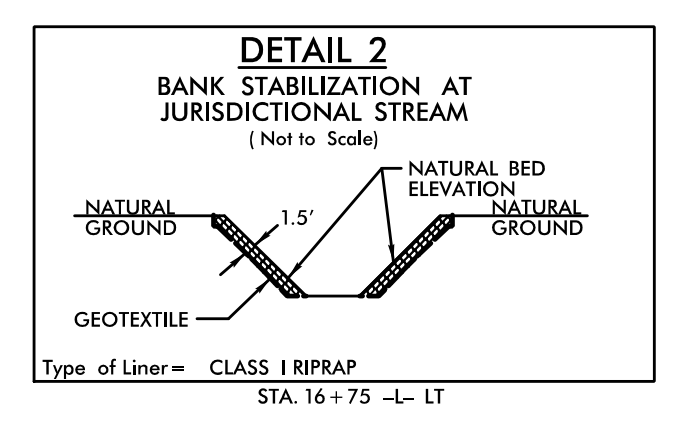
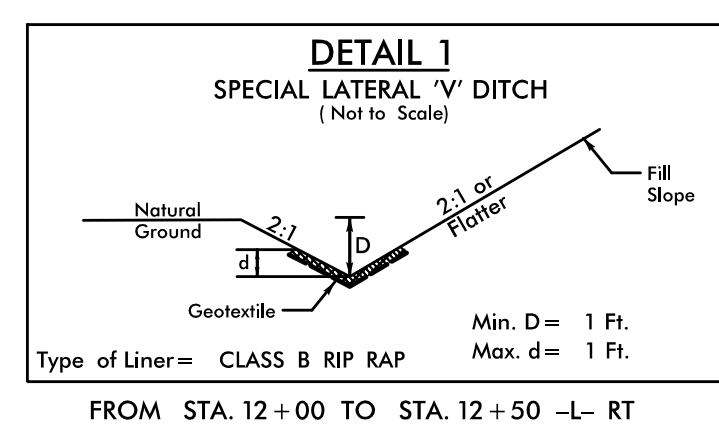
PI Sta 13+02.45 Δ = 52° 10' 00.0" (LT) D = 39' 47" 19.4" L = 131.1' T = 70.49' * R = 144.00' SE = 6% Ro = 108 V _d = 25 mph	PI Sta 16+84.66 Δ = 55° 27' 00.0" (LT) D = 24' 48" 12.1" L = 223.56' T = 121.41' R = 231.00' SE = 6% Ro = 114 V _d = 30 mph
---	---



BEGIN TIP PROJECT B-5405
-L- POT STA. 11+00.00

END TIP PROJECT B-5405
-L- POT STA. 18+50.00

*DESIGN EXCEPTION REQUIRED FOR
HORIZONTAL ALIGNMENT AND HORIZONTAL
STOPPING SIGHT DISTANCE



XXXXXX PAVEMENT REMOVAL
PAVED SHOULDER

SEE SHEET 5 FOR -L- PROFILE

8/17/99
8:53:42 AM
R:\Environmental\Design\B5405_REU_EC_PSH04_CG.dgn

LOCHNER

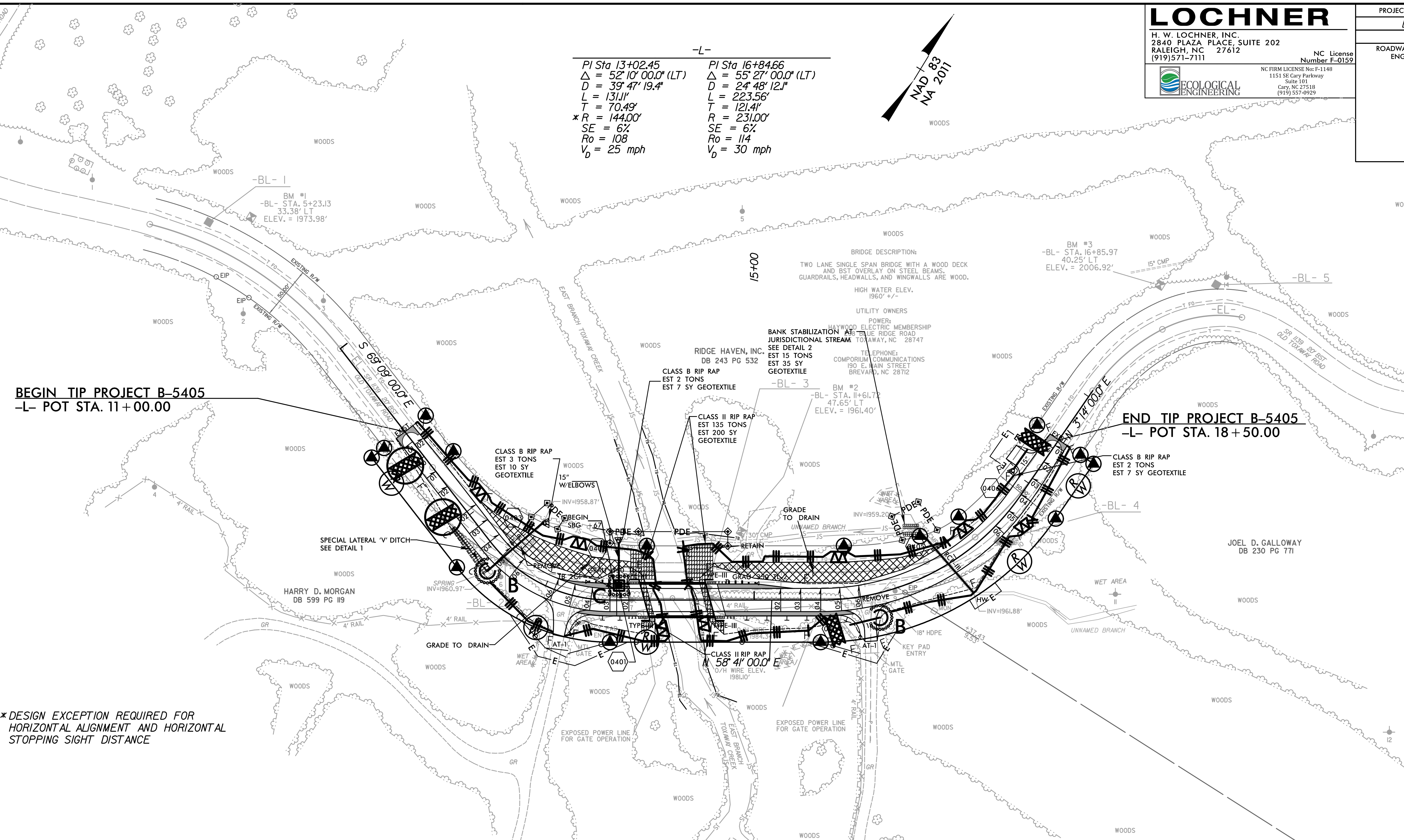
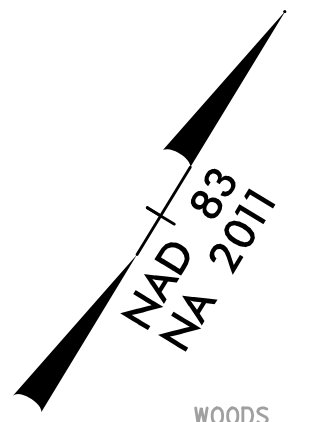
H. W. LOCHNER, INC.
2840 PLAZA PLACE, SUITE 202
RALEIGH, NC 27612
(919) 571-7111

NC License Number F-0159
1151 SE Cary Parkway
Suite 101
Cary, NC 27518
(919) 557-0929

PROJECT REFERENCE NO. B-5405	SHEET NO. EC-05/CONST.04
R/W SHEET NO.	
ROADWAY DESIGN ENGINEER	HYDRAULICS ENGINEER

-L-

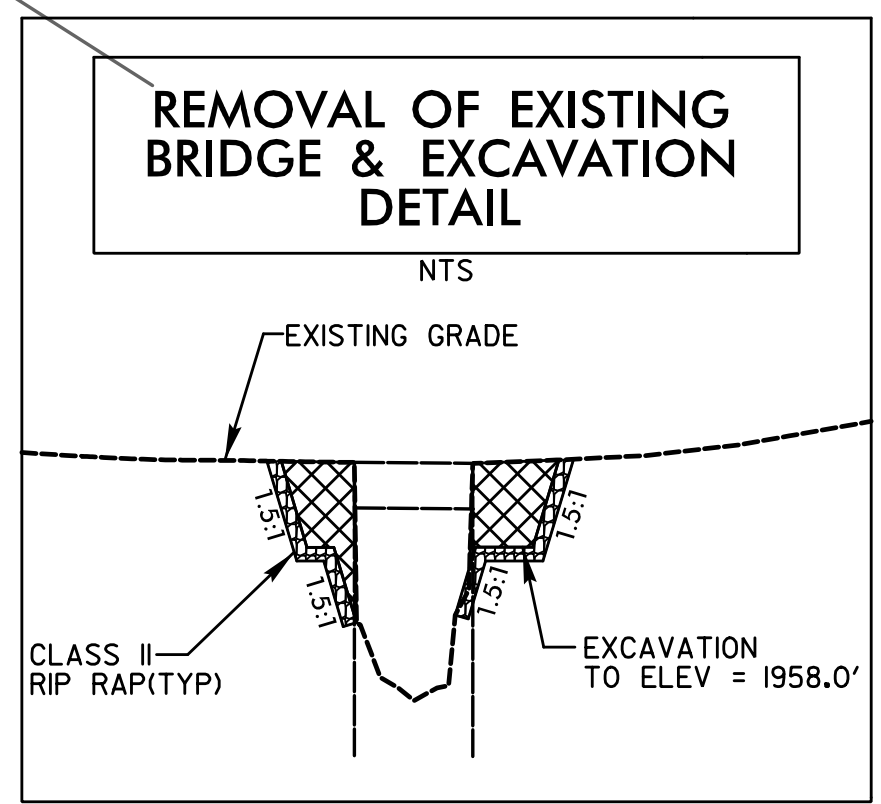
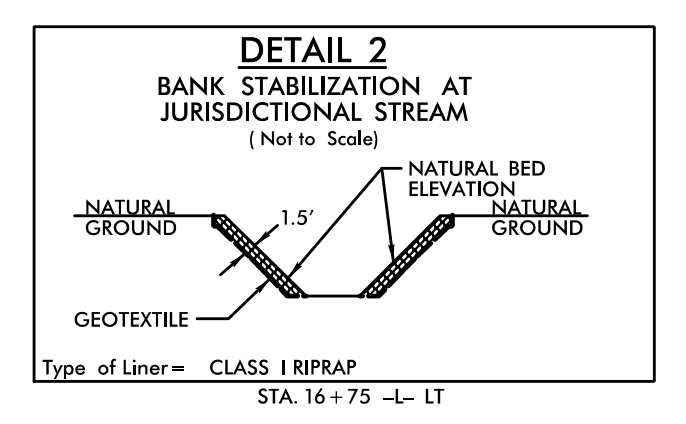
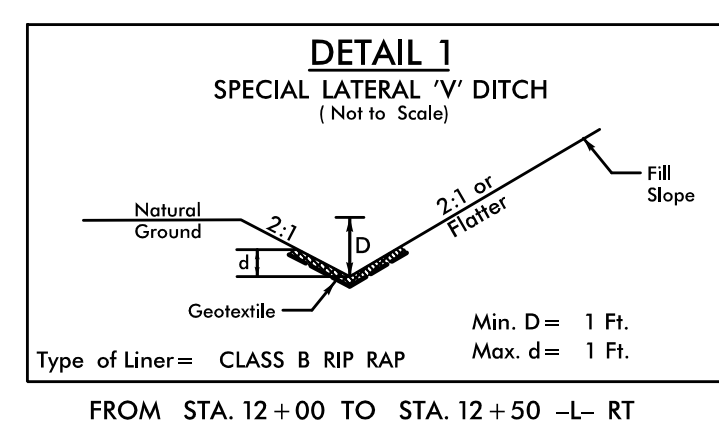
PI Sta 13+02.45	PI Sta 16+84.66
$\Delta = 52^{\circ} 10' 00.0" (LT)$	$\Delta = 55^{\circ} 27' 00.0" (LT)$
$D = 39^{\circ} 47' 19.4"$	$D = 24^{\circ} 48' 12.1"$
$L = 131.1'$	$L = 223.56'$
$T = 70.49'$	$T = 121.41'$
$*R = 144.00'$	$R = 231.00'$
$SE = 6\%$	$SE = 6\%$
$R_o = 108$	$R_o = 114$
$V_d = 25 \text{ mph}$	$V_d = 30 \text{ mph}$



BEGIN TIP PROJECT B-5405
-L- POT STA. 11+00.00

END TIP PROJECT B-5405
-L- POT STA. 18+50.00

*DESIGN EXCEPTION REQUIRED FOR HORIZONTAL ALIGNMENT AND HORIZONTAL STOPPING SIGHT DISTANCE



XXXXXX PAVEMENT REMOVAL
PAVED SHOULDER

SEE SHEET 5 FOR -L- PROFILE

8/17/99
8/5/14 AM
R:\Environmental\Design\B5405_REU_EC_PSH04_FINAL.dgn
-aid-cobol