

**This electronic collection of documents is provided
for the convenience of the user
and is Not a Certified Document –**

**The documents contained herein were originally issued
and sealed by the individuals whose names and license
numbers appear on each page, on the dates appearing
with their signature on that page.**

**This file or an individual page
shall not be considered a certified document.**

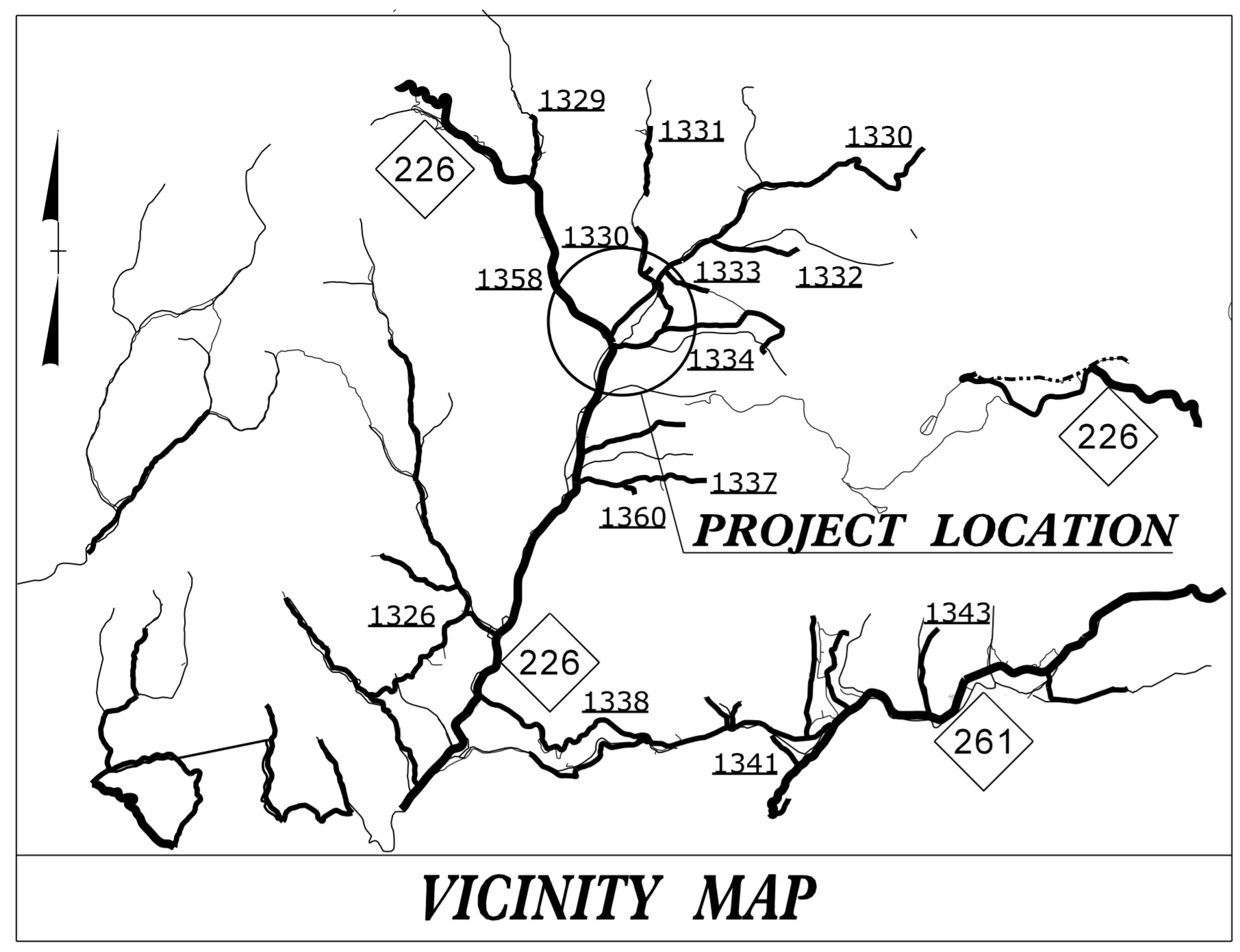
09/08/99

TIP PROJECT: B-5170

STATE OF NORTH CAROLINA
DIVISION OF HIGHWAYS

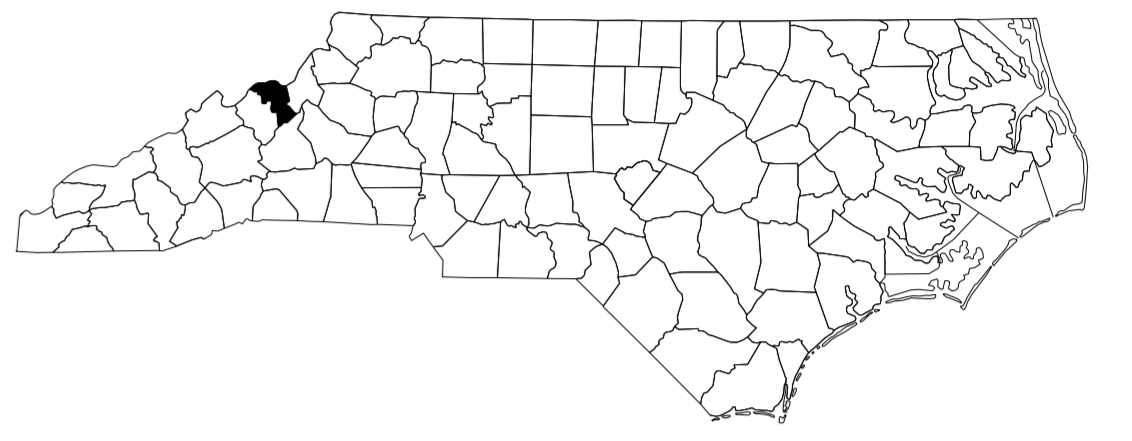
T.I.P. NO.	SHEET NO.
B-5170	UO-1

NOTE:
ALL UTILITY WORK SHOWN ON THIS SHEET IS DONE BY OTHERS.
NO PAYMENT WILL BE MADE TO THE CONTRACTOR FOR UTILITY WORK SHOWN ON THIS SHEET.

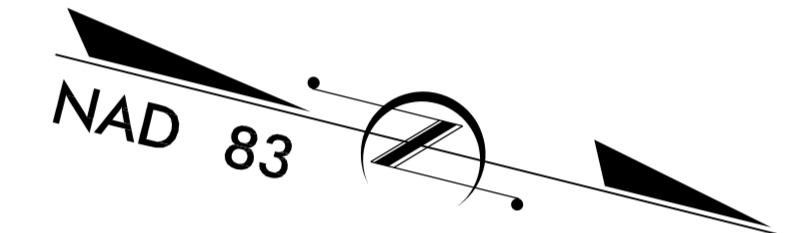
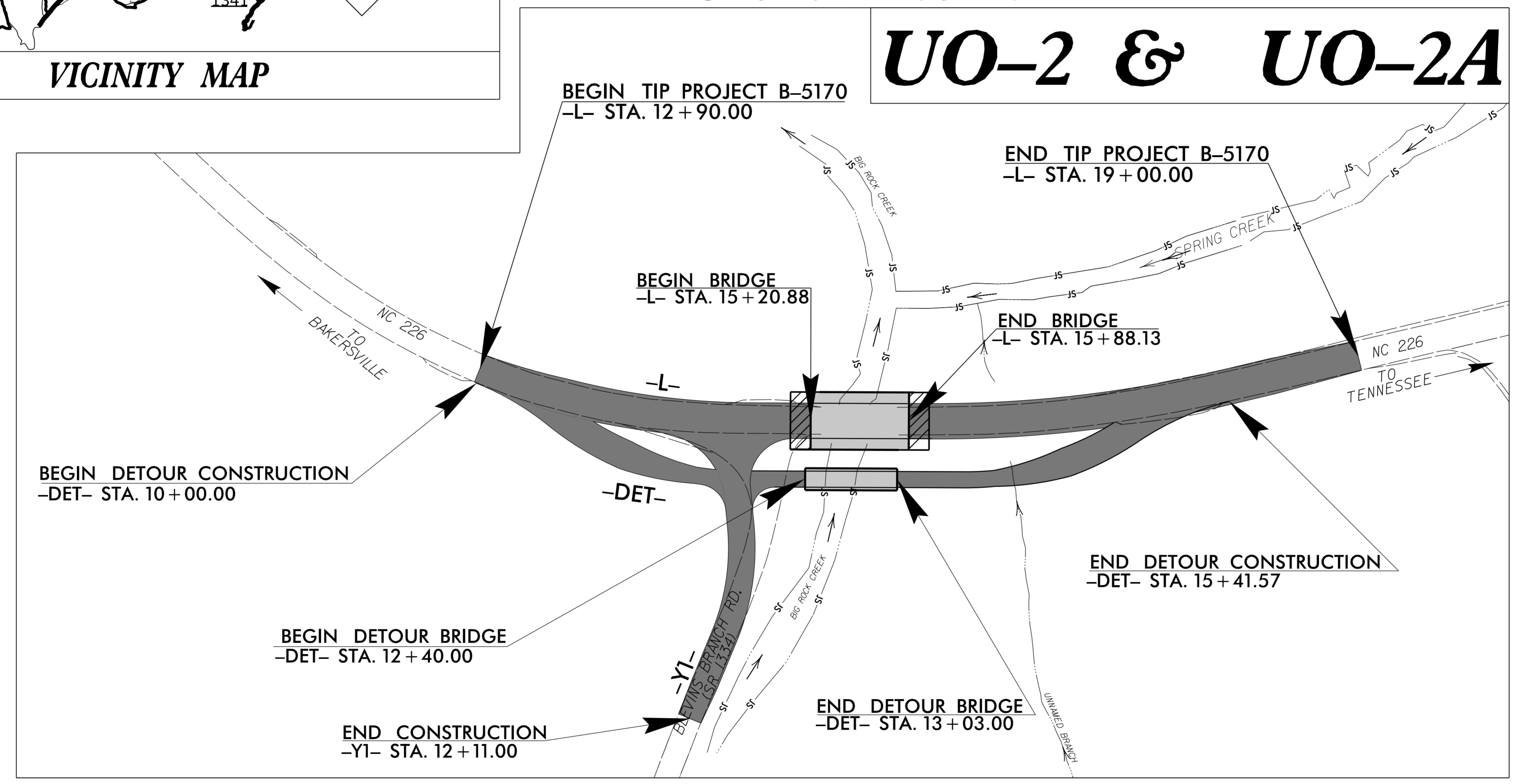


UTILITIES BY OTHERS PLANS
MITCHELL COUNTY

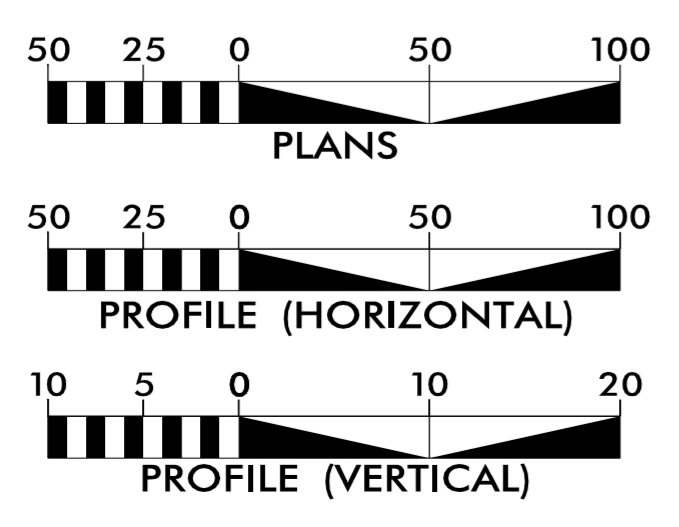
LOCATION: BRIDGE NO. 29 OVER ROCK CREEK ON NC 226
TYPE OF WORK: POWER DISTRIBUTION, TELEPHONE,
& CATV RELOCATION



UO-2 & UO-2A



GRAPHIC SCALES



INDEX OF SHEETS

SHEET NO.:	DESCRIPTION:
UO-1	TITLE SHEET
UO-2 - UO-2A	UBO PLAN SHEETS

UTILITY OWNERS WITH CONFLICTS

- (A) FRENCH BROAD EMC - POWER DISTRIBUTION
- (B) FRONTIER COMMUNICATIONS - TELEPHONE
- (C) COUNTRY CABLEVISION - CATV

PREPARED IN THE OFFICE OF:

3220 GLEN ROYAL RD. RALEIGH, NC 27617
TELE 919.788.0224 FAX 919.788.0232
NC LICENSE #P-0189

UTILITIES PROJECT ENGINEER
Mary Jo Lee, P.E.

DIVISION OF HIGHWAYS
UTILITIES UNIT
1555 MAIL SERVICES CENTER
RALEIGH, NC 27699-1555
PHONE (919) 707-6690
FAX (919) 250-4151

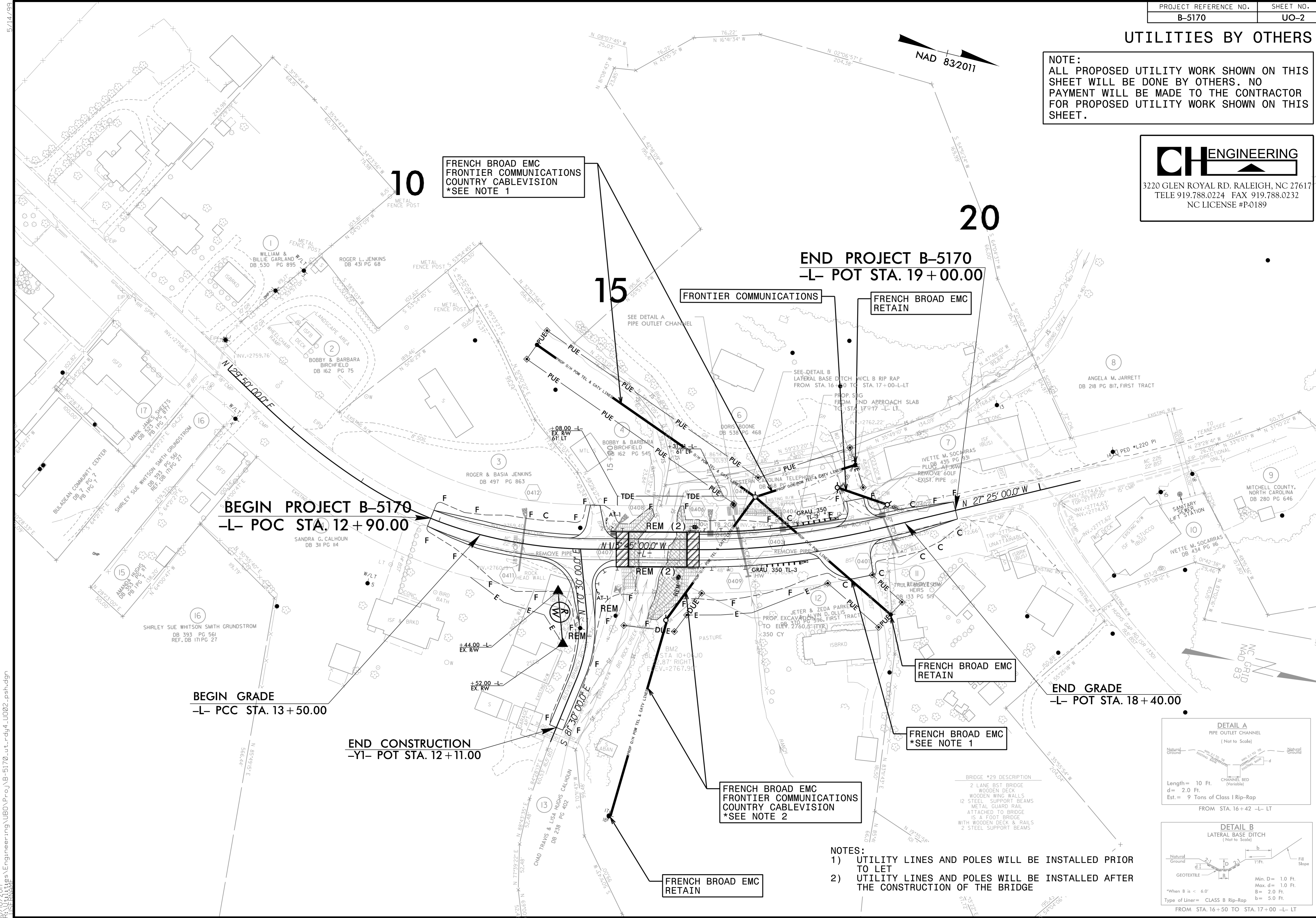
MICHAEL BRIGHT	UTILITIES REGIONAL ENGINEER
ALI KOUCHEKI, PE	UTILITIES ENGINEER
AMY DUPREE	UTILITIES AREA COORDINATOR
STEVE TREXLER	UTILITIES COORDINATOR

10/11/2017
R:\Utilities\Engineering\UBO\Proj\B-5170_ut_1\sh_u001.psh.dgn
-USERNAME-

UTILITIES BY OTHERS

NOTE:
 ALL PROPOSED UTILITY WORK SHOWN ON THIS SHEET WILL BE DONE BY OTHERS. NO PAYMENT WILL BE MADE TO THE CONTRACTOR FOR PROPOSED UTILITY WORK SHOWN ON THIS SHEET.

CH ENGINEERING
 3220 GLEN ROYAL RD. RALEIGH, NC 27617
 TELE 919.788.0224 FAX 919.788.0232
 NC LICENSE #P-0189



FRENCH BROAD EMC
 FRONTIER COMMUNICATIONS
 COUNTRY CABLEVISION
 *SEE NOTE 1

FRONTIER COMMUNICATIONS

FRENCH BROAD EMC
 RETAIN

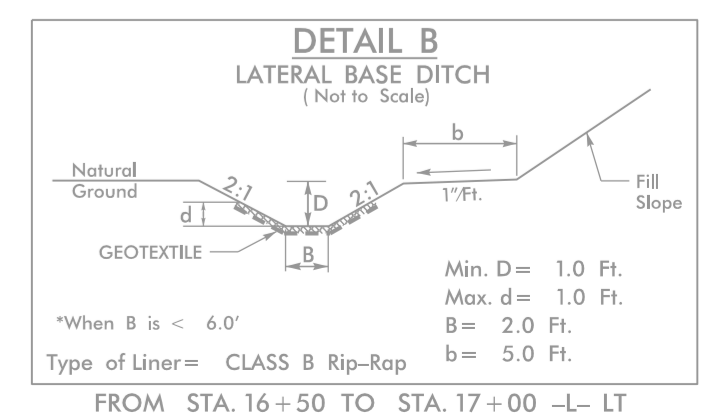
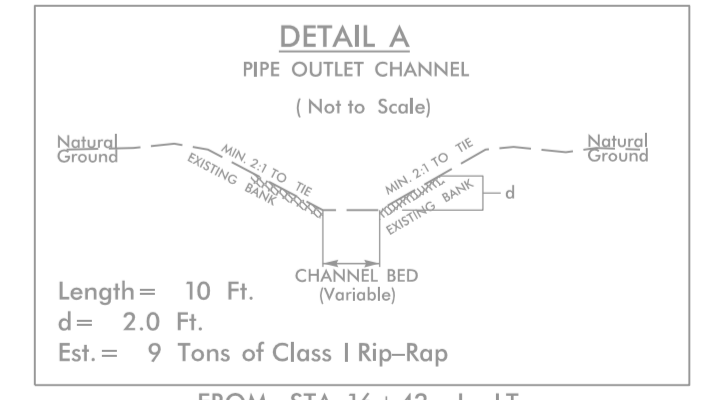
FRENCH BROAD EMC
 RETAIN

FRENCH BROAD EMC
 *SEE NOTE 1

FRENCH BROAD EMC
 FRONTIER COMMUNICATIONS
 COUNTRY CABLEVISION
 *SEE NOTE 2

FRENCH BROAD EMC
 RETAIN

- NOTES:
 1) UTILITY LINES AND POLES WILL BE INSTALLED PRIOR TO LET
 2) UTILITY LINES AND POLES WILL BE INSTALLED AFTER THE CONSTRUCTION OF THE BRIDGE



BRIDGE #29 DESCRIPTION
 2 LANE BST BRIDGE
 WOODEN DECK
 WOODEN WING WALLS
 12 STEEL SUPPORT BEAMS
 METAL GUARD RAIL
 ATTACHED TO BRIDGE
 IS A FOOT BRIDGE
 WITH WOODEN DECK & RAILS
 2 STEEL SUPPORT BEAMS

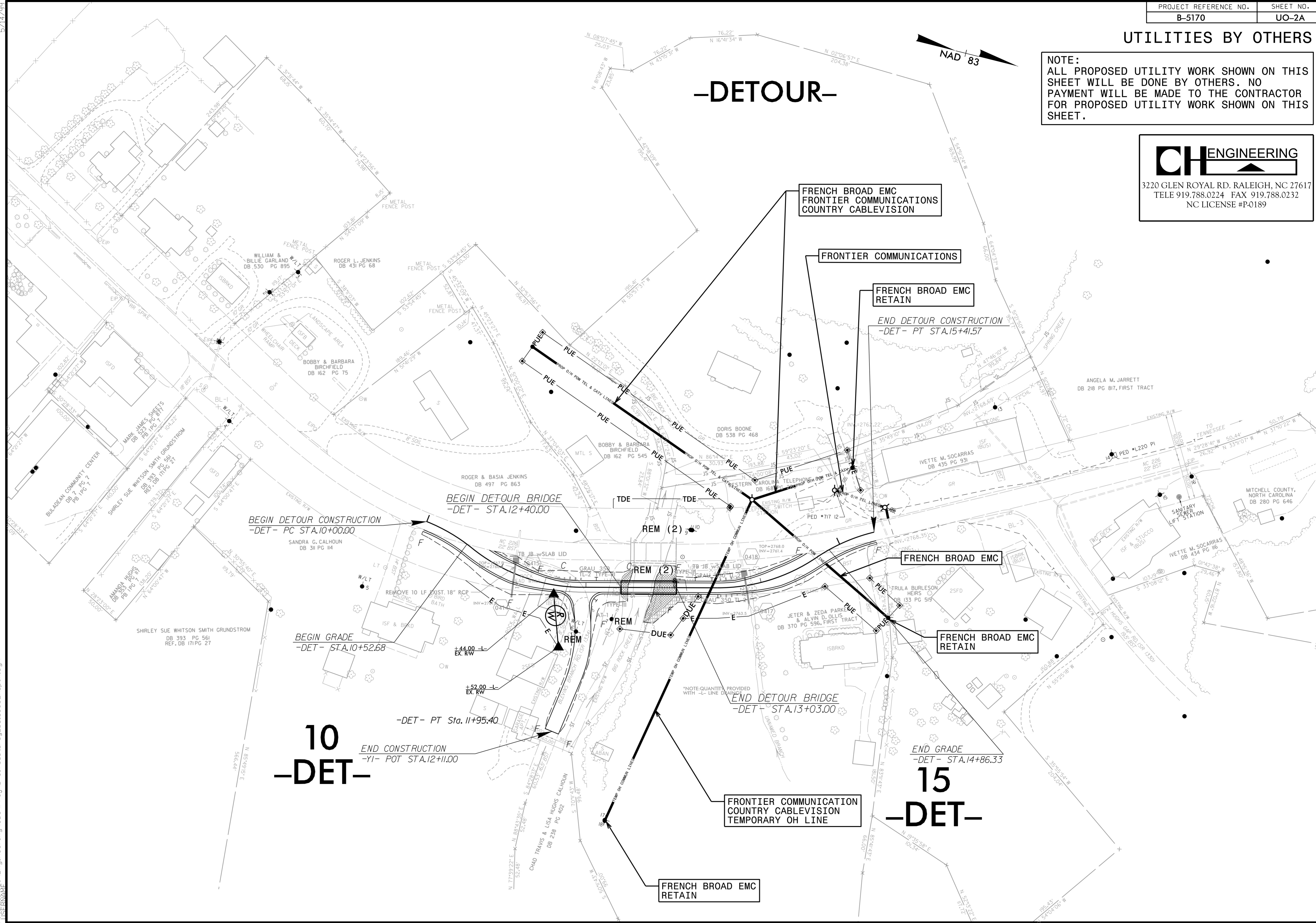
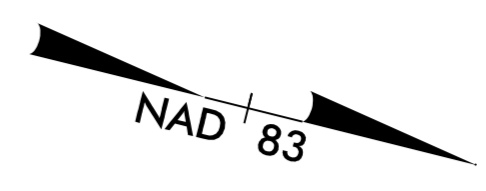
10/10/2017
 C:\Users\james\Engineering\UBD\Projects\B-5170\ut_rdy4_U002_psh.dgn

UTILITIES BY OTHERS

NOTE:
 ALL PROPOSED UTILITY WORK SHOWN ON THIS SHEET WILL BE DONE BY OTHERS. NO PAYMENT WILL BE MADE TO THE CONTRACTOR FOR PROPOSED UTILITY WORK SHOWN ON THIS SHEET.

CH ENGINEERING
 3220 GLEN ROYAL RD. RALEIGH, NC 27617
 TELE 919.788.0224 FAX 919.788.0232
 NC LICENSE #P-0189

-DETOUR-



10 -DETOUR-

15 -DETOUR-

10/10/2017
 C:\Users\james\Engineering\UBD\Proje\NB-5170-ut.-rdy2B-1.L002A-psh.dgn