

5/14/99

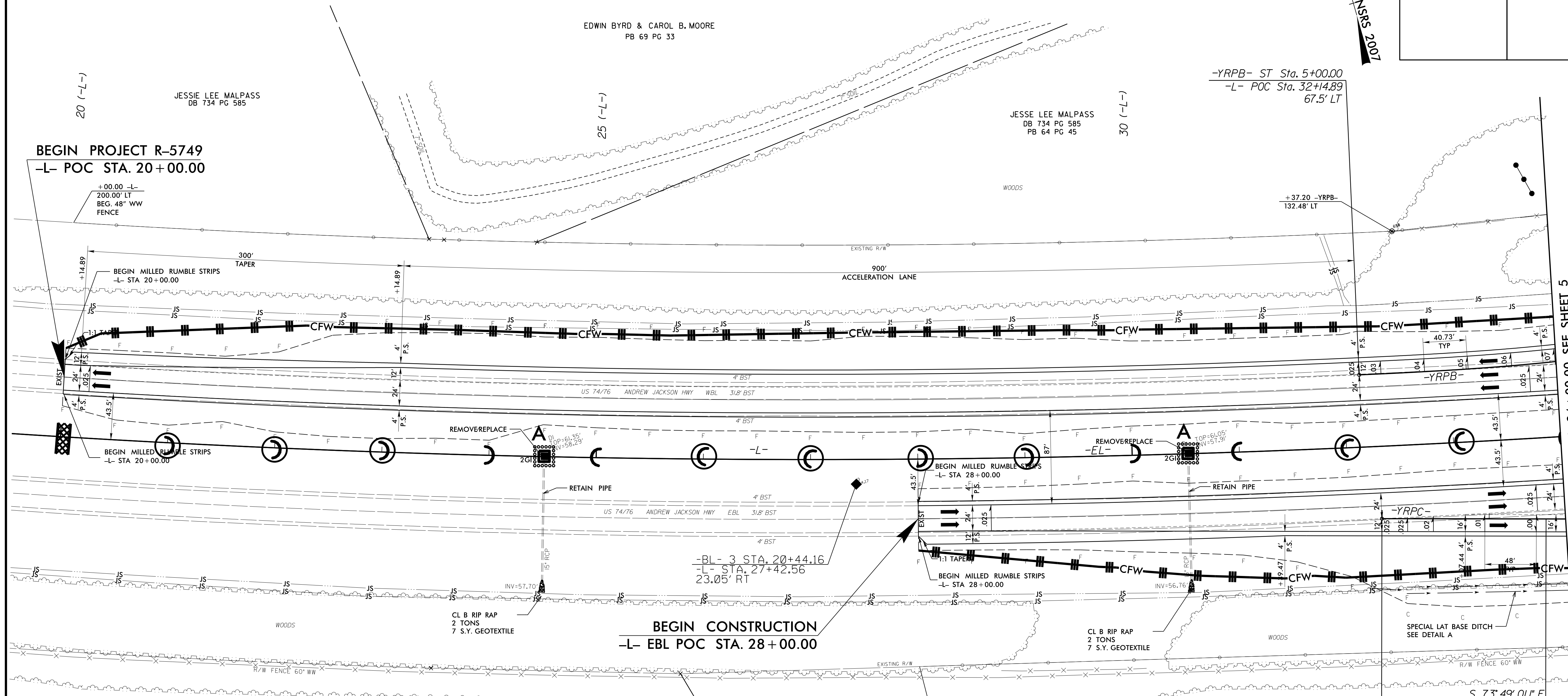
NOTES: ANY DEVIATION FROM OPTIONS GIVEN WILL REQUIRE PRIOR APPROVAL BY ENGINEER.

ADDITIONAL EROSION CONTROL DEVICES MAY NEED TO BE INSTALLED AS DIRECTED BY THE ENGINEER.

FINAL GRADE PLAN



PROJECT REFERENCE NO.	SHEET NO.
R-5749	EC-13/CONST.04
RW SHEET NO.	
ROADWAY DESIGN ENGINEER	HYDRAULICS ENGINEER



NOTE: UTILIZE TEMPORARY SEDIMENT BASIN OR SPECIAL STILLING BASIN(S) AS STILLING BASIN WHERE APPLICABLE.

NOTE: MAINTAIN ACCESS TO OVERHEAD ELECTRIC TRANSMISSION DRIVEWAY.

-L-

PI Sta 35+26.80
$\Delta = 22^\circ 57' 21.2''$ (LT)
$D = 0' 30' 00.0''$
$L = 4591.18'$
$T = 2,326.80'$
$R = 11,459.16'$
$e = 0.025$
$RO = 200.00'$
$DS = 75$ MPH

-YRPB-

PIs Sta 6+40.81
$\Theta_s = 0' 33' 46.3''$
$\Theta_s = 4' 20' 10.9''$
$L_s = 224.00'$
$LT = 140.81'$
$ST = 83.31'$

MATCH LINE -L- POC STA. 34+00.00 SEE SHEET 5