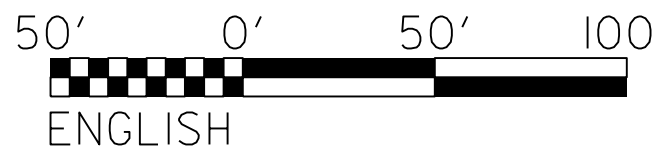


5/14/2007

NOTES: ANY DEVIATION FROM OPTIONS GIVEN WILL REQUIRE PRIOR APPROVAL BY ENGINEER.

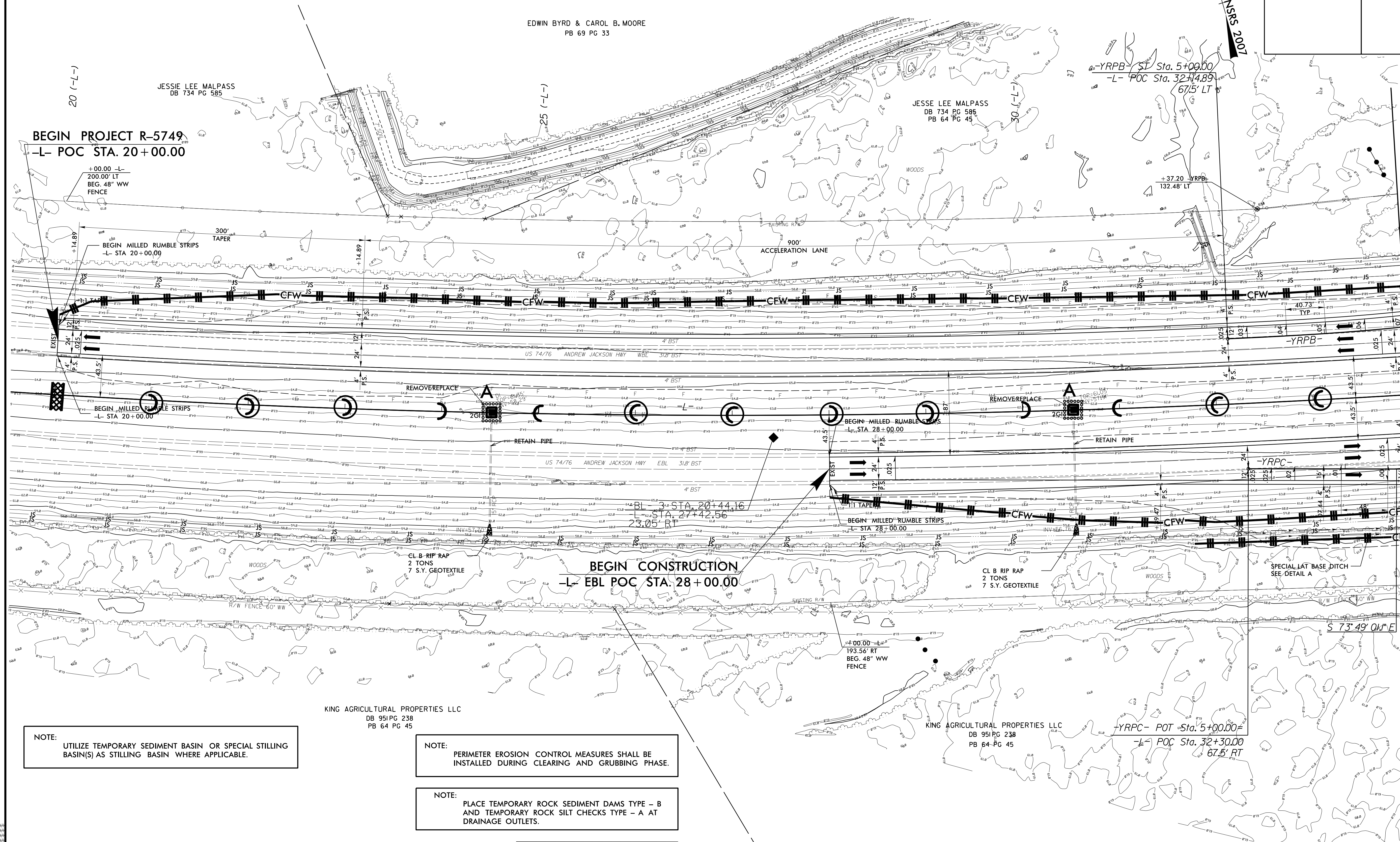
ADDITIONAL EROSION CONTROL DEVICES MAY NEED TO BE INSTALLED AS DIRECTED BY THE ENGINEER.

CLEARING & GRUBBING PLAN



| | |
|---------------------------------|-----------------------------|
| PROJECT REFERENCE NO. R-5749 | SHEET NO. EC-06/CONST.04 |
| RW SHEET NO. | |
| ROADWAY DESIGN ENGINEER | HYDRAULICS ENGINEER |

EDWIN BYRD & CAROL B. MOORE
PB 69 PG 33



BEGIN PROJECT R-5749
-L- POC STA. 20+00.00

BEGIN CONSTRUCTION
-L- EBL POC STA. 28+00.00

-L- YRPB - POT Sta. 5+00.00
-L- POC Sta. 32+30.00
67.5' LT

-YRPC- POT Sta. 5+00.00
-L- POC Sta. 32+30.00
67.5' RT

NOTE: UTILIZE TEMPORARY SEDIMENT BASIN OR SPECIAL STILLING BASIN(S) AS STILLING BASIN WHERE APPLICABLE.

NOTE: PERIMETER EROSION CONTROL MEASURES SHALL BE INSTALLED DURING CLEARING AND GRUBBING PHASE.

NOTE: PLACE TEMPORARY ROCK SEDIMENT DAMS TYPE - B AND TEMPORARY ROCK SILT CHECKS TYPE - A AT DRAINAGE OUTLETS.

NOTE: MAINTAIN ACCESS TO OVERHEAD ELECTRIC TRANSMISSION DRIVEWAY.

CLEARING AND GRUBBING EROSION CONTROL FOR CONSTRUCTION SHEET 04

MATCH LINE -L- POC STA. 34+00.00 SEE SHEET 5