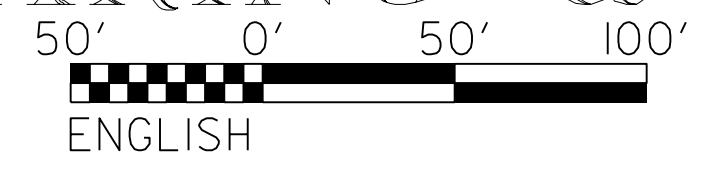


5/14/99

NOTES: ANY DEVIATION FROM OPTIONS GIVEN WILL REQUIRE PRIOR APPROVAL BY ENGINEER.

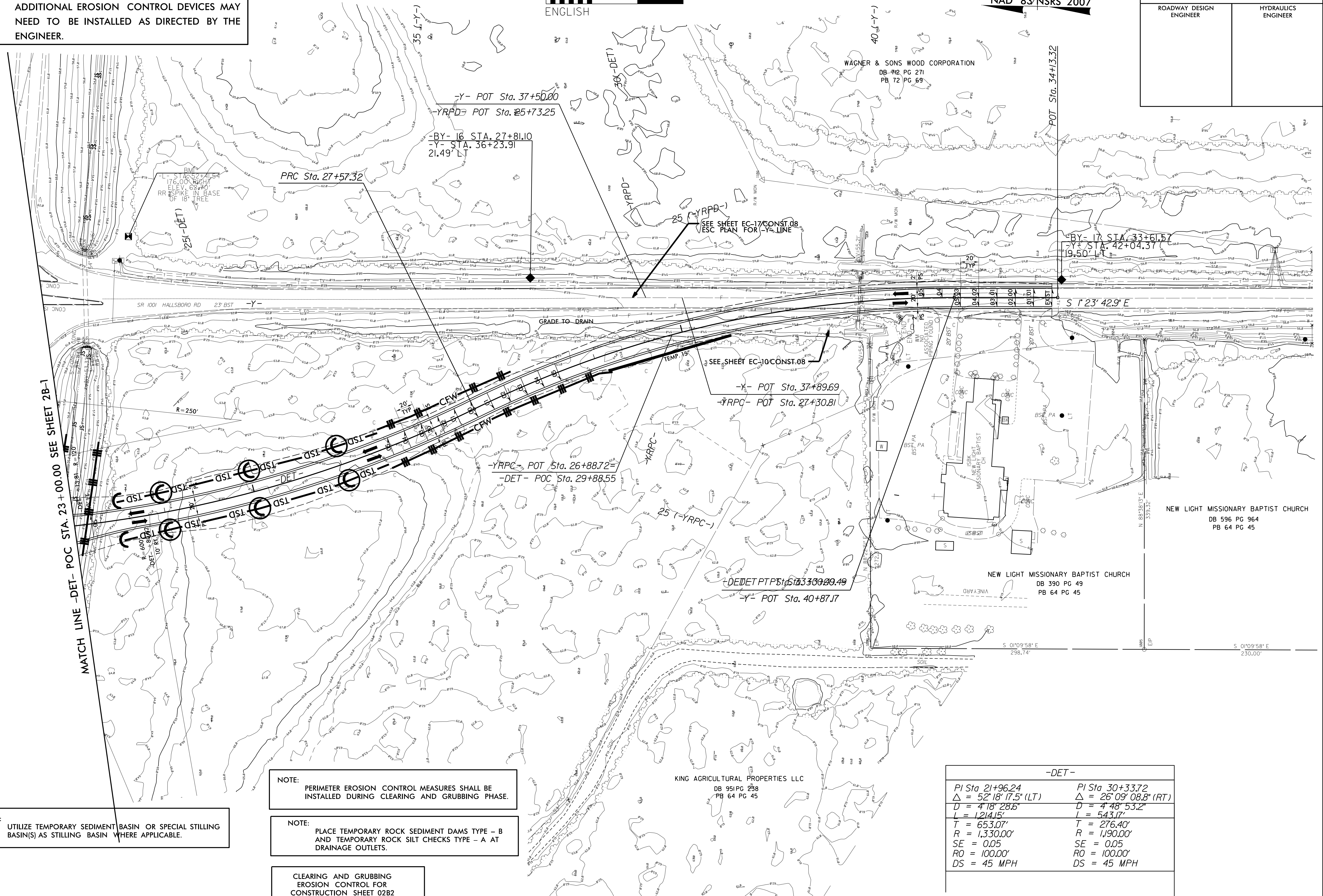
ADDITIONAL EROSION CONTROL DEVICES MAY NEED TO BE INSTALLED AS DIRECTED BY THE ENGINEER.

CLEARING & GRUBBING PLAN



NAD 83/NSRS 2007

PROJECT REFERENCE NO.	SHEET NO.
R-5749	EC-05/CONST.02B2
RW SHEET NO.	
ROADWAY DESIGN ENGINEER	HYDRAULICS ENGINEER



NOTE: UTILIZE TEMPORARY SEDIMENT BASIN OR SPECIAL STILLING BASIN(S) AS STILLING BASIN WHERE APPLICABLE.

NOTE: PERIMETER EROSION CONTROL MEASURES SHALL BE INSTALLED DURING CLEARING AND GRUBBING PHASE.

NOTE: PLACE TEMPORARY ROCK SEDIMENT DAMS TYPE - B AND TEMPORARY ROCK SILT CHECKS TYPE - A AT DRAINAGE OUTLETS.

CLEARING AND GRUBBING EROSION CONTROL FOR CONSTRUCTION SHEET 02B2

-DET-	
PI Sta 21+96.24	PI Sta 30+33.72
$\Delta = 52' 18" 17.5" (LT)$	$\Delta = 26' 09" 08.8" (RT)$
$D = 4' 18" 28.6"$	$D = 4' 48" 53.2"$
$L = 1214.15'$	$L = 543.17'$
$T = 653.07'$	$T = 276.40'$
$R = 1,330.00'$	$R = 1,190.00'$
$SE = 0.05$	$SE = 0.05$
$RO = 100.00'$	$RO = 100.00'$
$DS = 45 MPH$	$DS = 45 MPH$

C:\TILES\CON\05\02B2\02B2.DWG