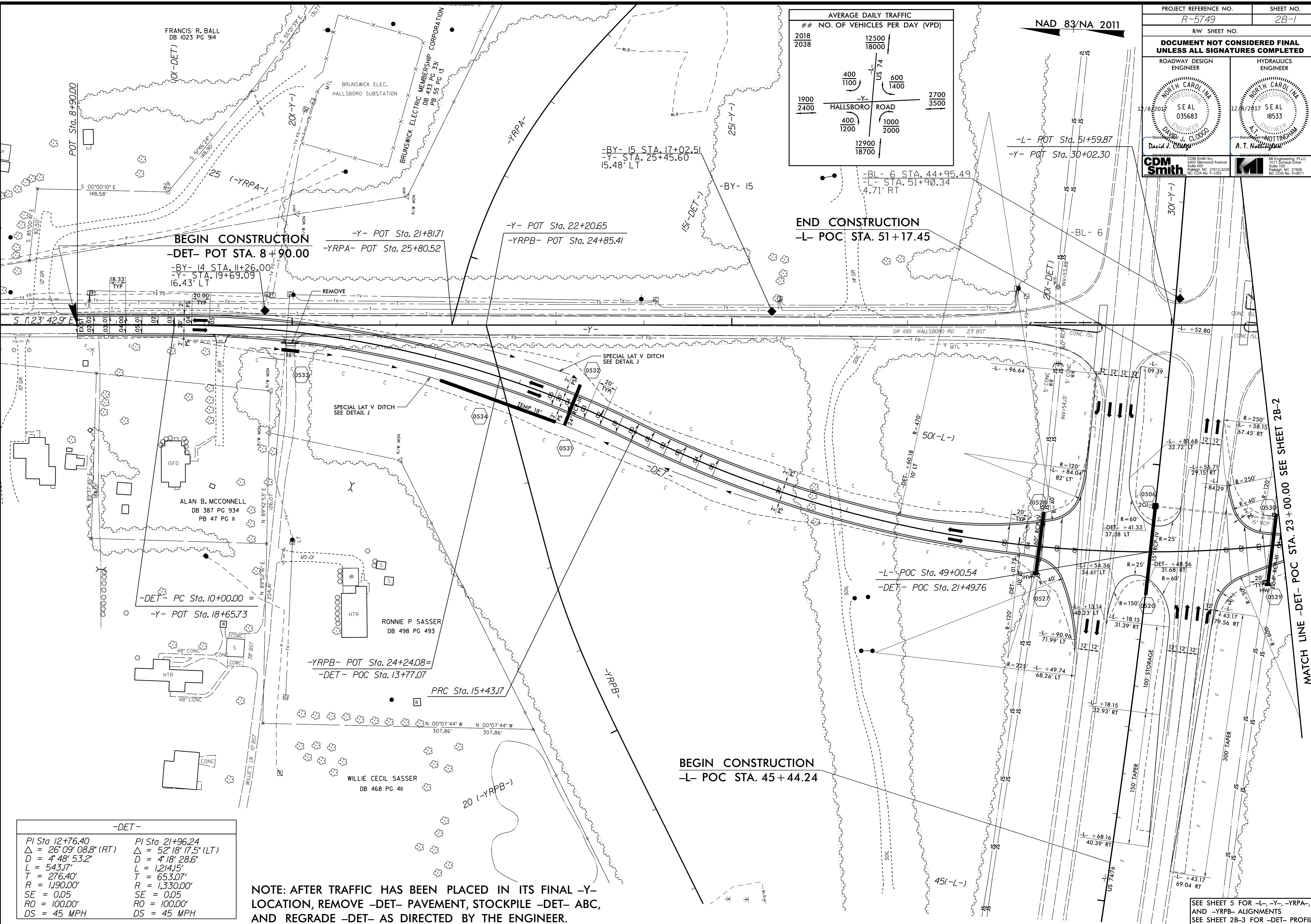


PROJECT REFERENCE NO. R-5749	SHEET NO. 2B-1
RW SHEET NO.	
<b>DOCUMENT NOT CONSIDERED FINAL UNLESS ALL SIGNATURES COMPLETED</b>	
ROADWAY DESIGN ENGINEER	HYDRAULICS ENGINEER

AVERAGE DAILY TRAFFIC		NO. OF VEHICLES PER DAY (VPD)	
2018	12500	400	600
2038	18000	1100	1400
1900	2400	400	1000
		1200	2000
		12900	18700



-DET-	
PI Sta 12+76.40	PI Sta 21+96.24
$\Delta = 26^{\circ} 09' 08.8''$ (RT)	$\Delta = 52^{\circ} 18' 17.5''$ (LT)
D = 4' 48" 53.2"	D = 4' 18" 28.6"
L = 543.17'	L = 1,214.15'
T = 276.40'	T = 653.07'
R = 1,190.00'	R = 1,330.00'
SE = 0.05	SE = 0.05
RO = 100.00'	RO = 100.00'
DS = 45 MPH	DS = 45 MPH

NOTE: AFTER TRAFFIC HAS BEEN PLACED IN ITS FINAL -Y- LOCATION, REMOVE -DET- PAVEMENT, STOCKPILE -DET- ABC, AND REGRADE -DET- AS DIRECTED BY THE ENGINEER.

MATCH LINE -DET- POC STA. 23 + 00.00 SEE SHEET 2B-2

Invalid expression: Rdj\_psh\_2B1.dgn