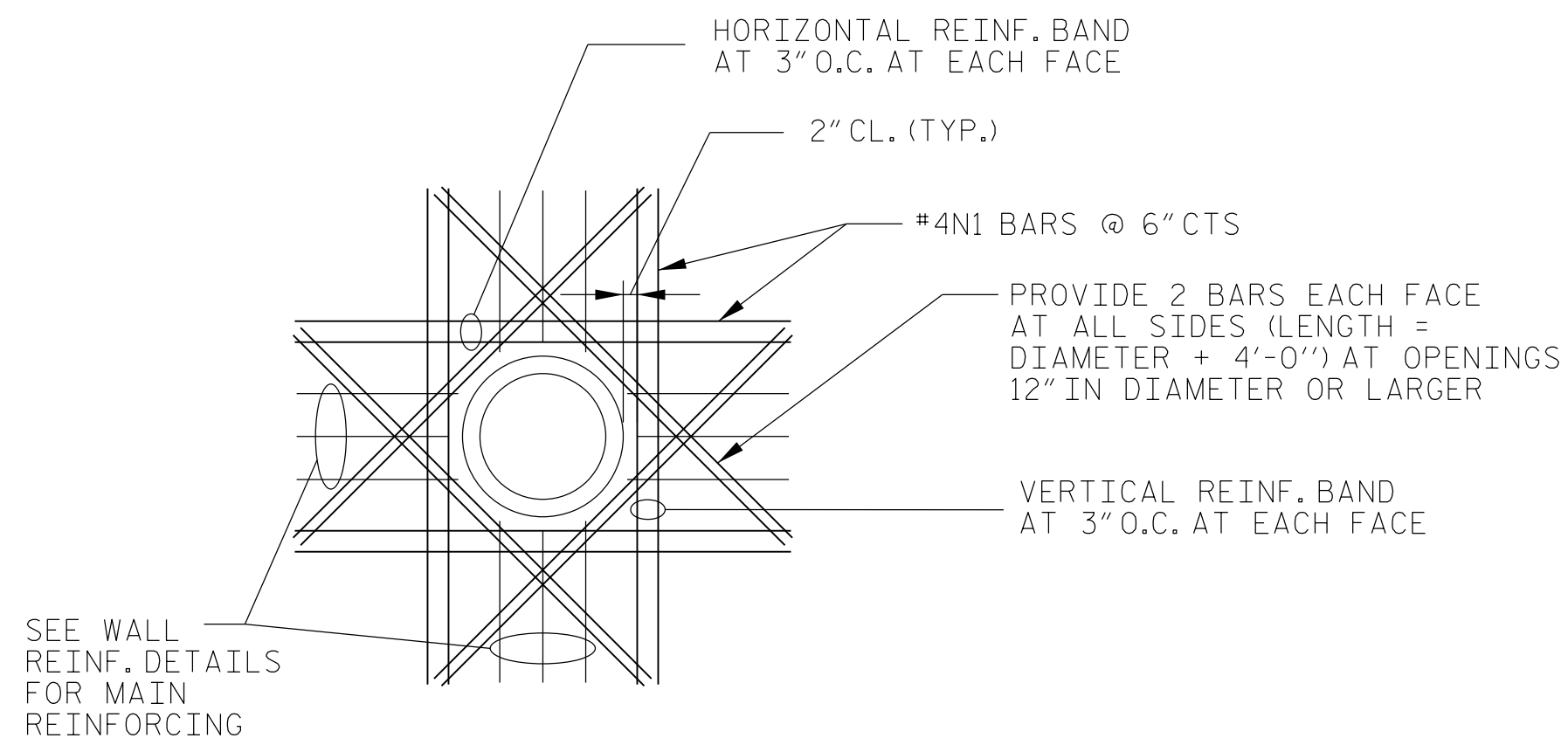


**This electronic collection of documents is provided
for the convenience of the user
and is Not a Certified Document –**

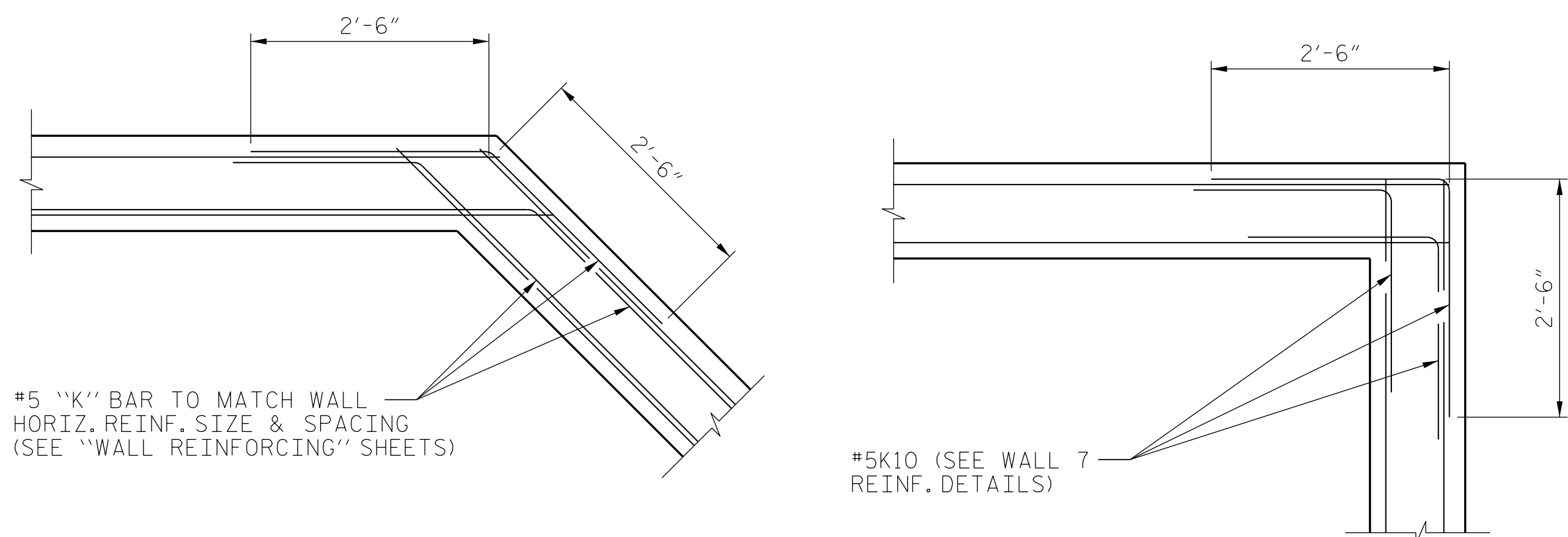
**The documents contained herein were originally issued
and sealed by the individuals whose names and license
numbers appear on each page, on the dates appearing
with their signature on that page.**

**This file or an individual page
shall not be considered a certified document.**

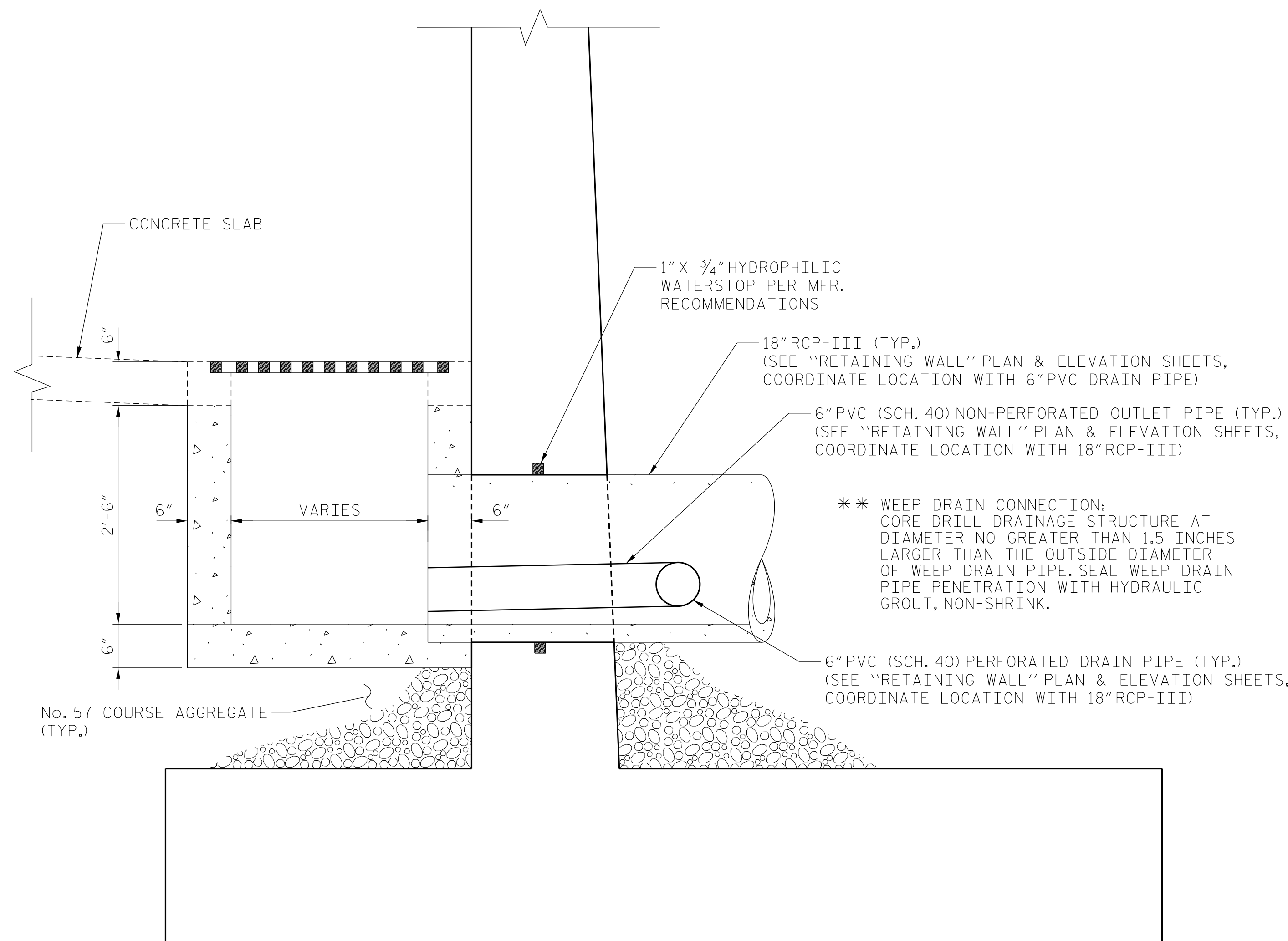


NOTE: AT OPENINGS WHERE REINFORCING IS INTERRUPTED ADD 1/2 OF INTERRUPTED VERTICAL BARS (FULL HEIGHT) ON EACH SIDE OF OPENING IN PLACE OF THE (2) MINIMUM BARS INDICATED. ADD 1/2 OF INTERRUPTED HORIZONTAL REINFORCING (FULL LENGTH) TO TOP AND BOTTOM OF OPENING

TYPICAL WALL OPENING DETAIL
(DETAIL APPLIES TO 12" DIAMETER OPENINGS OR LARGER)



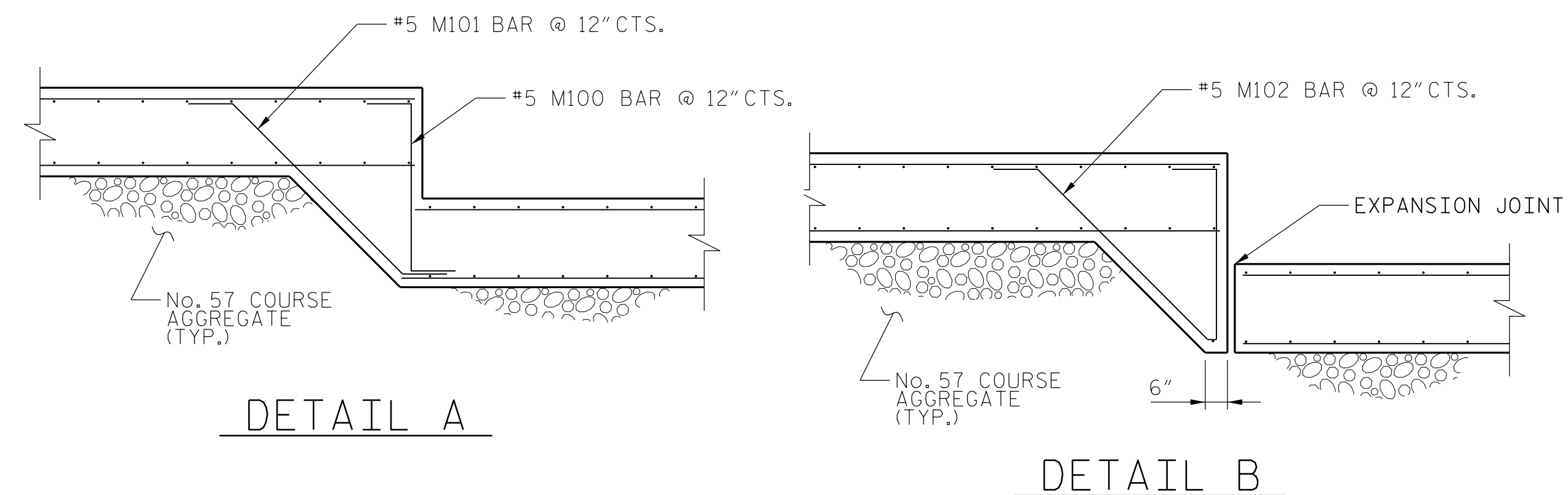
CONCRETE WALL DETAIL



SECTION F-F

PROJECT NO. W-5522
WAKE COUNTY
STATION: 15+58.58 -L-
11+28.22 -Y1-

SHEET 1 OF 2



DETAIL A

DETAIL B

AECOM
AECOM TECHNICAL SERVICES, INC.
701 CORPORATE CENTER DRIVE, SUITE 475
RALEIGH, NC 27607
(919) 854-6200 www.aecom.com
AECOM License No. F-0342

11/8/2017

NORTH CAROLINA PROFESSIONAL SEAL 030474 ENGINEER JOHN C. MORRISON

DocuSigned by: John C. Morrison A2F0E142C82F4A8

STATE OF NORTH CAROLINA
DEPARTMENT OF TRANSPORTATION
RALEIGH

RETAINING WALL
SECTIONS AND DETAILS

REVISIONS						SHEET NO.
NO.	BY:	DATE:	NO.	BY:	DATE:	TOTAL SHEETS
1			3			31
2			4			

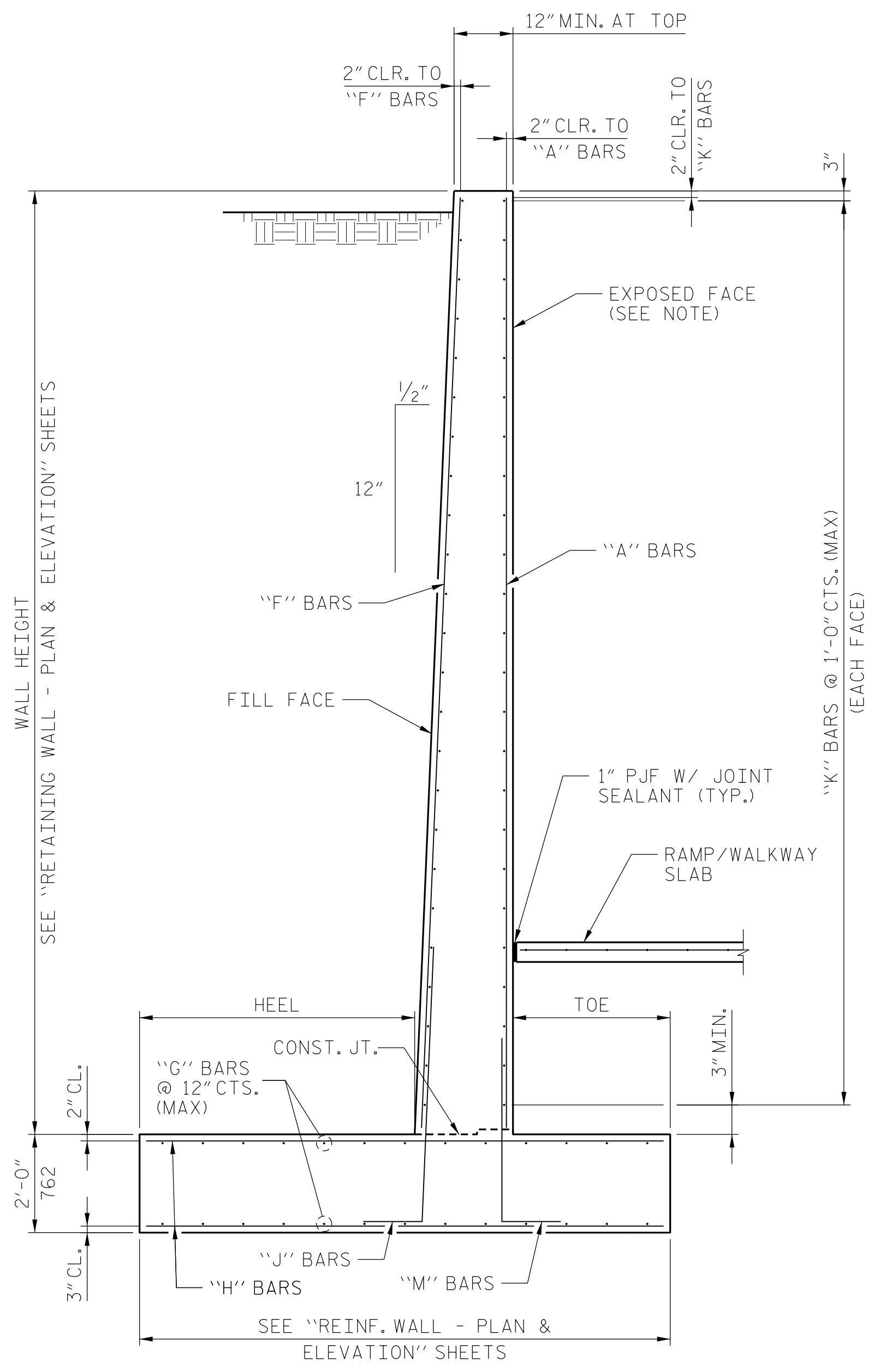
DOCUMENT NOT CONSIDERED FINAL UNLESS ALL SIGNATURES COMPLETED

DATE: 11/7/2017 TIME: 2:55:06 PM

USER: C:\PTM\NUSFAL3\F001\John.C.Morrison\Jobs\W-5522\Trinity Rd. Peg\W5522\Structures\Cadd\A10_105_W5522_S1U_S21_FM.dgn

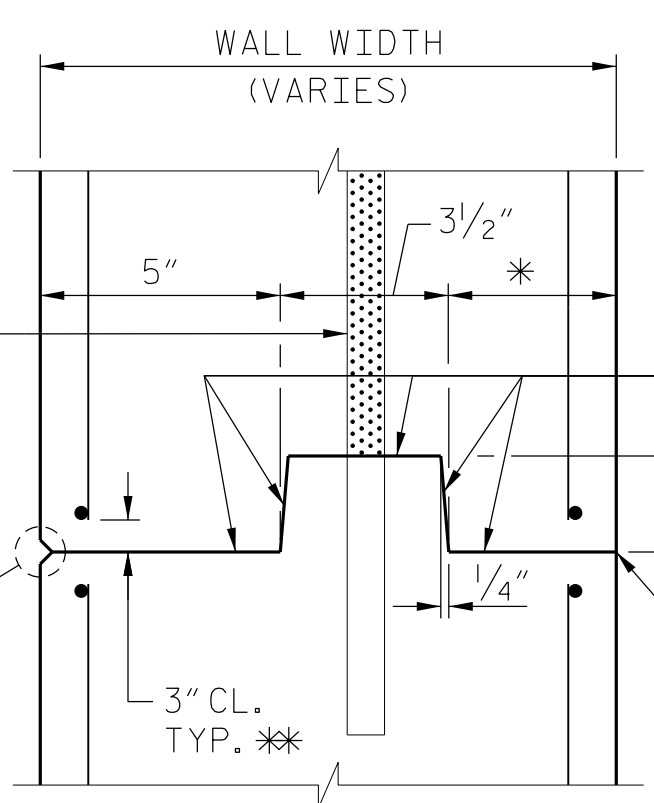
DRAWN BY : H. ROSEMOND DATE : 09/2017
CHECKED BY : C. MORRISON DATE : 09/2017
DESIGNED BY : M. TOM DATE : 09/2017

NOTE:
 ANY WALL AESTHETIC TREATMENTS SHALL NOT COMPROMISE THE DESIGN WALL SECTION SHOWN, INCLUDING THE REQUIRED CLEAR COVER AND WALL/SLAB JOINT DETAILS.

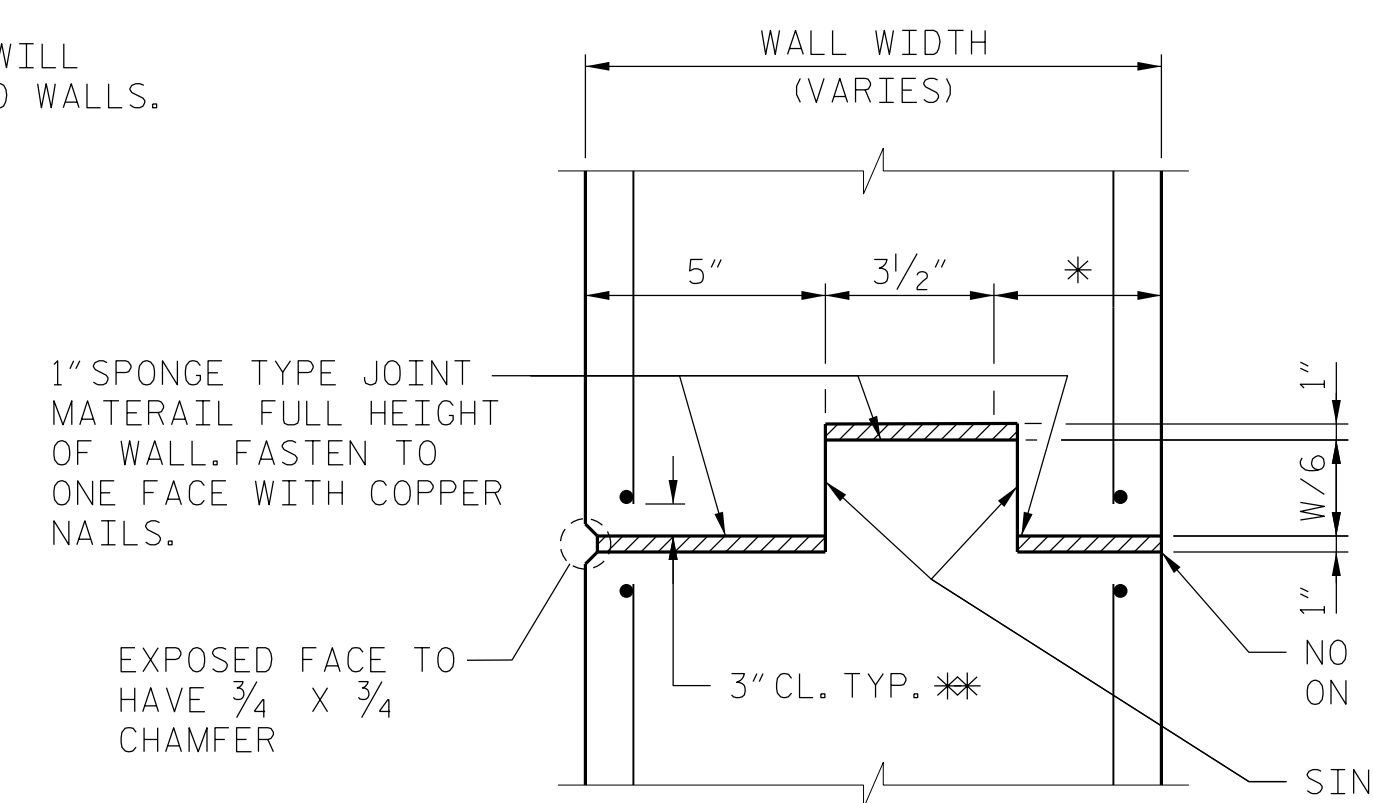


SECTION THRU RETAINING WALL

SPLICE LENGTH CHART	
BAR SIZE	SPLICE LENGTH
#5	2'-2"
#6	2'-7"
#7	3'-3"
#8	4'-3"
#9	5'-5"
#10	6'-10"

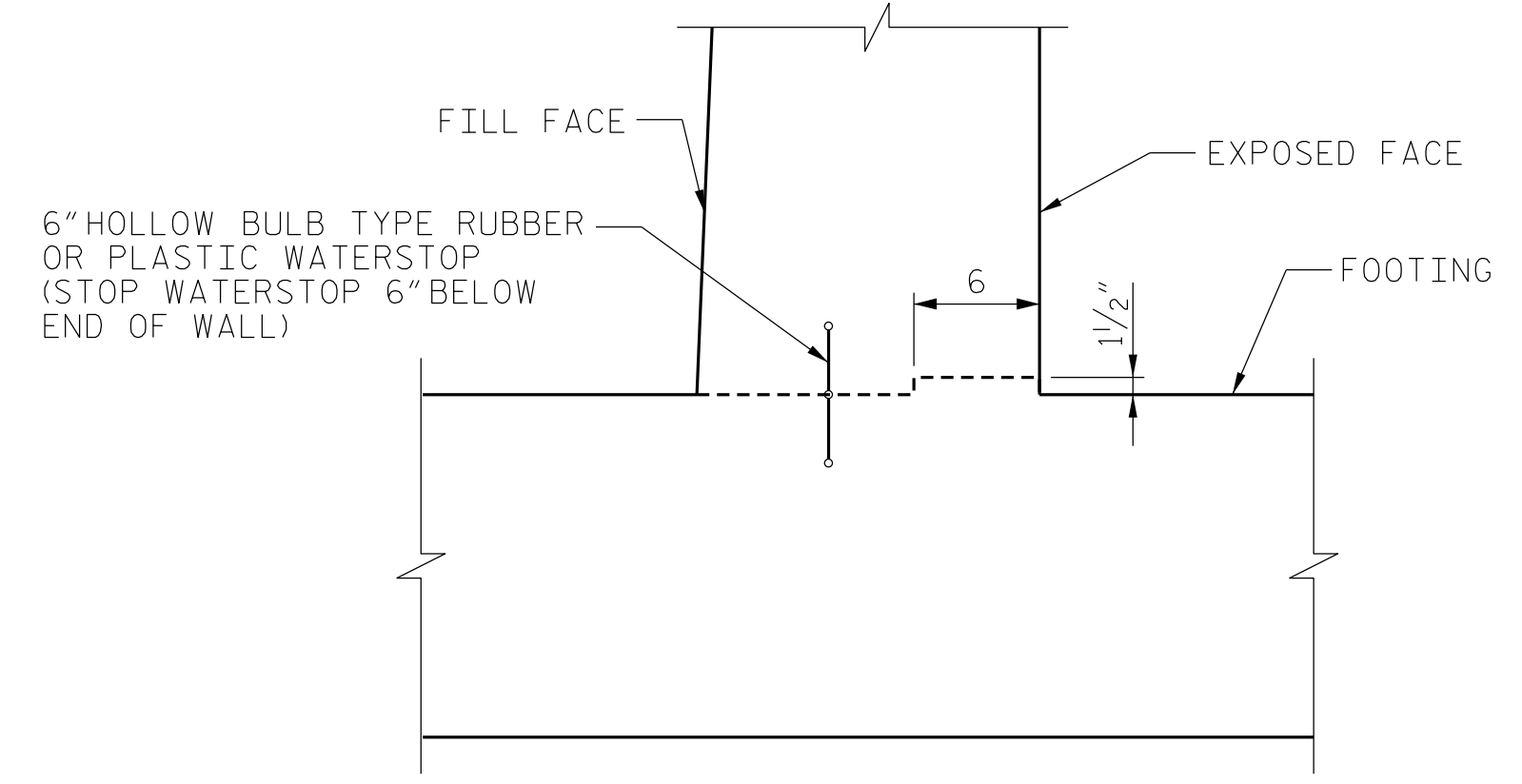


CONTRACTION JOINT



EXPANSION JOINT

VERTICAL WALL CONSTRUCTION JOINTS



SHEAR KEY DETAIL AT BOTTOM OF WALL

PROJECT NO. W-5522
WAKE COUNTY
 STATION: 15+58.58 -L-
11+28.22 -Y1-
 SHEET 2 OF 2

AECOM
 AECOM TECHNICAL SERVICES, INC.
 701 CORPORATE CENTER DRIVE, SUITE 475
 RALEIGH, NC 27607
 (919) 854-6200 www.aecom.com
 AECOM License No. F-0342

11/8/2017

NORTH CAROLINA PROFESSIONAL ENGINEER
 SEAL 030474
 JOHN C. MORRISON

DocuSigned by:
 John C. Morrison
 A2FDE142C82FAAB

STATE OF NORTH CAROLINA
 DEPARTMENT OF TRANSPORTATION
 RALEIGH

RETAINING WALL

SECTIONS AND DETAILS

REVISIONS						SHEET NO.
NO.	BY:	DATE:	NO.	BY:	DATE:	S-22
1			3			TOTAL SHEETS
2			4			31

DRAWN BY : M. TOM DATE : 09/2017
 CHECKED BY : C. MORRISON DATE : 09/2017
 DESIGNED BY : M. TOM DATE : 09/2017

DOCUMENT NOT CONSIDERED FINAL UNLESS ALL SIGNATURES COMPLETED

DATE: 11/27/2017 TIME: 2:55:17PM
 USER: p1071001 DON: N:\S\F\3\F001\Don\Morrison\Jobs\W-5522 Trinity Rd PedW5522\Structures\Cadd\410_10_M5522_S1W1_S22_2R.dwg

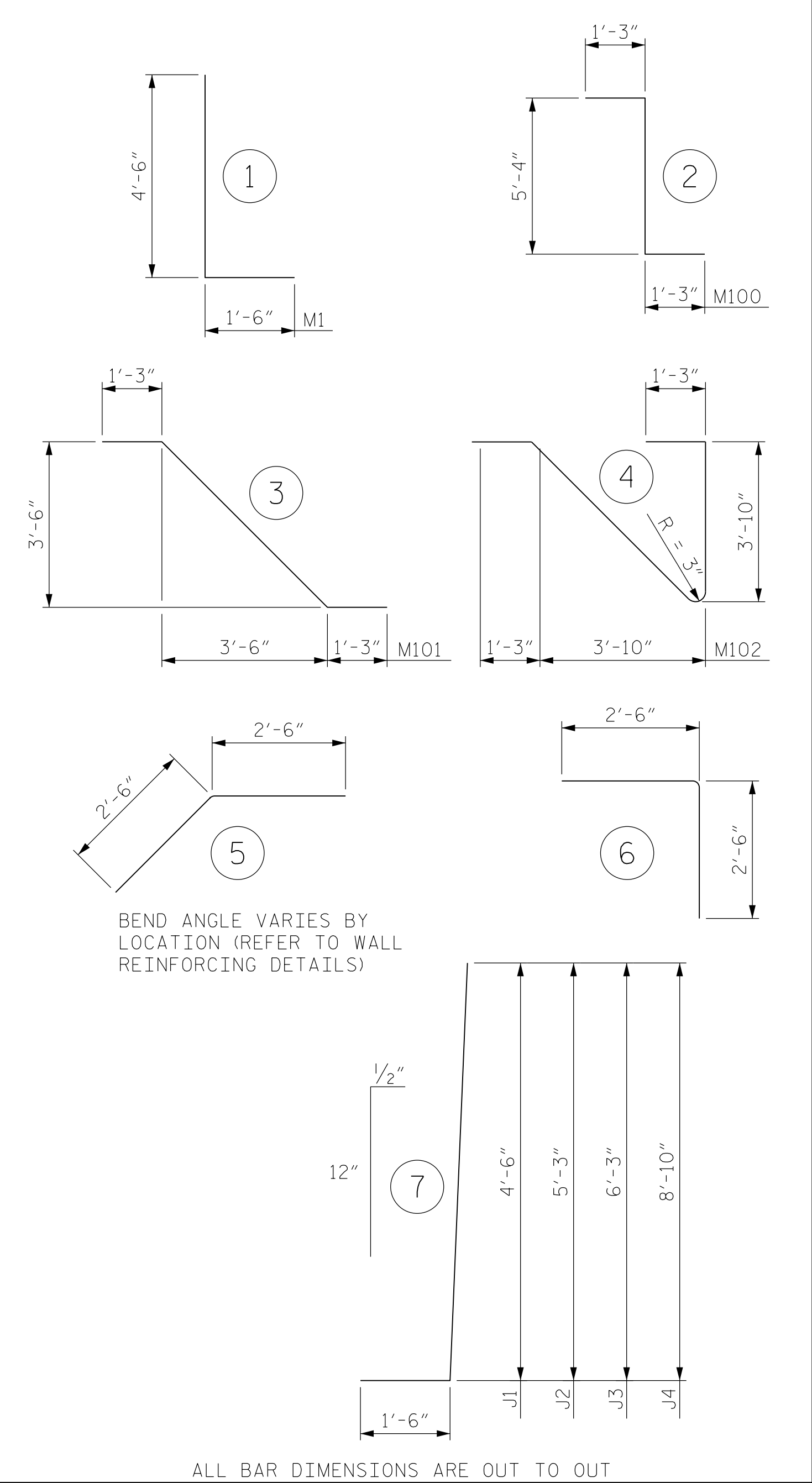
WALL 1						WALL 2						WALL 3											
BAR	No.	SIZE	TYPE	LENGTH	WEIGHT	BAR	No.	SIZE	TYPE	LENGTH	WEIGHT	BAR	No.	SIZE	TYPE	LENGTH	WEIGHT						
A1	25	6	STR	6'-5"	241	M1	163	5	1	6'-0"	1020	A1	15	9	STR	19'-2"	978						
A2	13	6	STR	6'-11"	135	M100	26	5	4	11'-6"	312	A2	9	8	STR	16'-8"	401						
A3	38	6	STR	10'-5"	595	M101	21	5	2	6'-6"	142	A3	5	6	STR	14'-2"	106						
A4	29	6	STR	13'-7"	592	M102	21	5	3	8'-0"	175	A4	5	6	STR	11'-8"	88						
A5	56	8	STR	16'-8"	2492							A5	5	6	STR	9'-2"	69						
A6	55	9	STR	19'-2"	3584	K1	78	5	STR	23'-8"	1925	A6	5	5	STR	6'-8"	35						
						K2	6	5	STR	11'-8"	73												
F1	25	5	STR	6'-5"	167	K3	62	5	STR	27'-6"	1778	F1	7	5	STR	19'-2"	140						
F2	13	5	STR	6'-11"	94	K4	40	5	STR	9'-9"	407	F2	5	5	STR	16'-8"	87						
F3	38	5	STR	10'-5"	413	K5	40	5	STR	17'-2"	716	F3	5	5	STR	14'-2"	74						
F4	29	5	STR	13'-7"	411	K6	40	5	5	5'-0"	209	F4	5	5	STR	11'-8"	61						
F5	29	5	STR	16'-8"	504	K7	40	5	5	5'-0"	209	F5	5	5	STR	9'-2"	48						
F6	29	5	STR	19'-2"	580							F6	5	5	STR	6'-8"	35						
						G1	76	5	STR	18'-9"	1486	H1	76	6	STR	5'-9"	656						
H1	72	6	STR	6'-9"	730	G2	56	5	STR	27'-5"	1601	H2	76	7	STR	10'-0"	1553						
H2	72	7	STR	9'-11"	1459	G3	2	8	STR	10'-11"	58	H3	58	8	STR	11'-6"	1781						
H3	58	8	STR	11'-6"	1781	G4	2	8	STR	12'-0"	64	H4	82	8	STR	13'-9"	3010						
H4	58	8	STR	13'-8"	2116	G5	2	8	STR	13'-0"	69	H5	2	8	STR	3'-9"	20						
H5	14	8	STR	14'-9"	551	G6	2	8	STR	14'-2"	76	H6	2	8	STR	3'-4"	18						
H6	2	8	STR	15'-1"	81	G7	2	8	STR	15'-2"	81	J1	37	5	7	6'-0"	232						
H7	2	8	STR	15'-7"	83	G8	2	8	STR	16'-2"	86	J2	66	7	7	6'-9"	911						
H8	2	8	STR	16'-2"	86	G9	2	8	STR	17'-3"	92	J3	84	8	7	7'-9"	1738						
H9	2	8	STR	16'-8"	89	G10	2	8	STR	18'-4"	98												
H10	2	8	STR	17'-3"	92	G11	2	8	STR	19'-4"	103	M1	148	5	1	6'-0"	926						
H11	2	8	STR	18'-2"	97	G12	2	8	STR	20'-5"	109	M100	12	5	4	11'-6"	144						
H12	2	8	STR	18'-10"	101	G13	2	8	STR	21'-6"	115	M101	22	5	2	6'-6"	149						
H13	4	8	STR	18'-11"	202	G14	2	8	STR	22'-6"	120	M102	22	5	3	8'-0"	184						
H14	2	8	STR	15'-5"	82	G15	2	8	STR	23'-7"	126												
H15	2	8	STR	17'-10"	95	G16	2	8	STR	24'-8"	132	K1	52	5	STR	23'-8"	1284						
H16	2	8	STR	17'-4"	93	G17	2	8	STR	25'-8"	137	K2	6	5	STR	11'-8"	73						
H17	2	8	STR	16'-9"	89	G18	14	8	STR	27'-0"	1009	K3	66	5	STR	27'-8"	1905						
H18	2	8	STR	16'-3"	87	G19	2	8	STR	21'-3"	113	K4	20	5	STR	9'-9"	203						
H19	2	8	STR	15'-9"	84	G20	2	8	STR	20'-3"	108	K5	20	5	STR	6'-6"	136						
H20	2	8	STR	15'-2"	81	G21	2	8	STR	19'-2"	102	K6	54	5	5	5'-0"	282						
H21	2	8	STR	14'-8"	78	G22	2	8	STR	18'-2"	97												
H22	2	8	STR	14'-2"	76	G23	2	8	STR	17'-1"	91	G1	72	5	STR	18'-9"	1408						
H23	2	8	STR	13'-7"	73	G24	2	8	STR	16'-0"	85	G2	26	5	STR	27'-8"	750						
H24	2	8	STR	13'-1"	70	G25	2	8	STR	15'-0"	80	G3	120	5	STR	20'-6"	2566						
H25	2	8	STR	12'-6"	67	G26	2	8	STR	19'-9"	105	G5	30	5	STR	8'-5"	263						
H26	2	8	STR	12'-0"	64	G27	2	8	STR	8'-3"	44												
H27	2	8	STR	11'-5"	61	G28	2	8	STR	9'-9"	52												
H28	2	8	STR	10'-11"	58																		
H29	2	8	STR	10'-5"	56																		
H30	2	8	STR	9'-10"	53																		
H31	2	8	STR	9'-4"	50																		
H32	2	8	STR	8'-9"	47																		
						TOTAL REINFORCING STEEL LBS. 37319						TOTAL REINFORCING STEEL LBS. 25648						TOTAL REINFORCING STEEL LBS. 6862					
						CLASS AA CONCRETE						CLASS AA CONCRETE						CLASS AA CONCRETE					
J1	38	6	7	6'-0"	342	POUR 1 (FOOTING) CY 94.3						POUR 1 (FOOTING) CY 65.7						POUR 1 (FOOTING) CY 20.4					
J2	93	7	7	6'-9"	1283	POUR 2 (WALL) CY 134.7						POUR 2 (WALL) CY 117						POUR 2 (WALL) CY 33.7					
J3	56	8	7	7'-9"	1159	TOTAL CY 229						TOTAL CY 182.7						TOTAL CY 54.1					
J4	56	10	7	10'-4"	2490																		

DATE: 11/27/2017
TIME: 2:56:06 PM

USER: \\USFAL3\F001\John.C.Morrison\Jobs\3W-5522_TriNity_Rd_Pkg\W5522\Structures\Cadd\A01_05_W5522_SMU_S23_RV.dgn

DRAWN BY : M. TOM DATE : 09/2017
CHECKED BY : C. MORRISON DATE : 09/2017
DESIGNED BY : M. TOM DATE : 09/2017

BAR TYPES



PROJECT NO. W-5522
WAKE COUNTY
STATION: 15+58.58 -L-
11+28.22 -Y1-
SHEET 1 OF 2

AECOM
AECOM TECHNICAL SERVICES, INC.
701 CORPORATE CENTER DRIVE, SUITE 475
RALEIGH, NC 27607
(919) 854-6200 www.aecom.com
AECOM License No. F-0342

11/8/2017

NORTH CAROLINA PROFESSIONAL SEAL
030474
ENGINEER
JOHN C. MORRISON

DocuSigned by:
John C. Morrison
A3FDE142C82F4A8

STATE OF NORTH CAROLINA
DEPARTMENT OF TRANSPORTATION
RALEIGH

RETAINING WALL
BILL OF MATERIAL

REVISIONS						SHEET NO.
NO.	BY:	DATE:	NO.	BY:	DATE:	S-23
1			3			TOTAL SHEETS
2			4			31

DOCUMENT NOT CONSIDERED FINAL UNLESS ALL SIGNATURES COMPLETED

