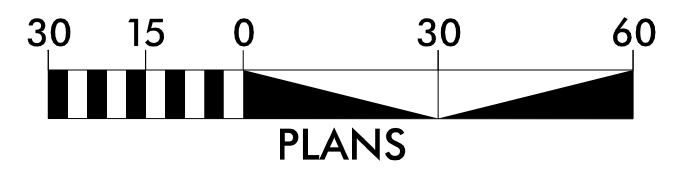
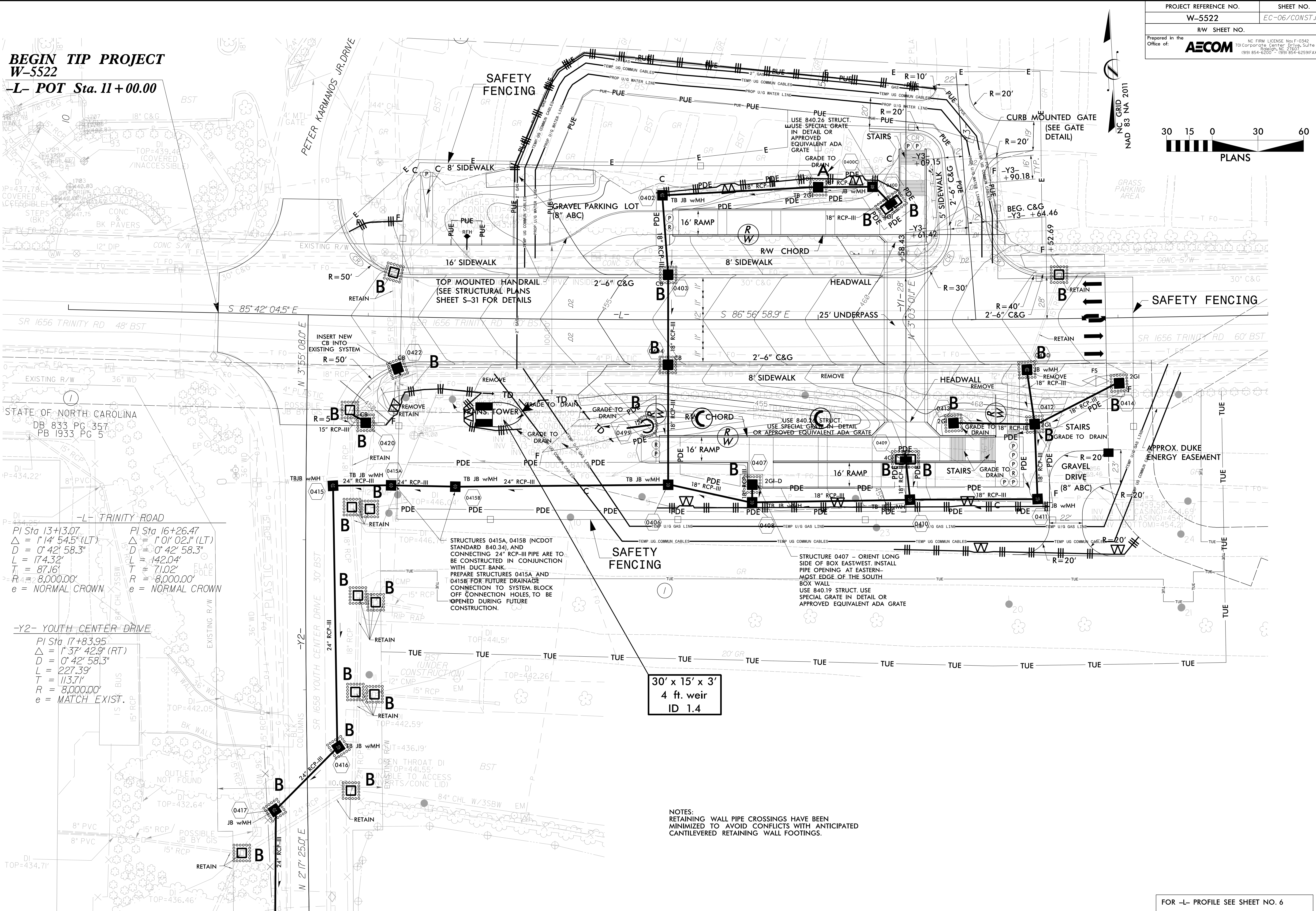


**BEGIN TIP PROJECT**  
**W-5522**  
**-L- POT Sta. 11+00.00**



PI Sta 13+13.07  
 $\Delta = 1' 14' 54.5''$  (LT)  
 $D = 0' 42' 58.3''$   
 $L = 174.32'$   
 $T = 87.16'$   
 $R = 8,000.00'$   
 $e = \text{NORMAL CROWN}$

PI Sta 16+26.47  
 $\Delta = 1' 01' 02.1''$  (LT)  
 $D = 0' 42' 58.3''$   
 $L = 142.04'$   
 $T = 71.02'$   
 $R = 8,000.00'$   
 $e = \text{NORMAL CROWN}$

**-Y2- YOUTH CENTER DRIVE**

PI Sta 17+83.95  
 $\Delta = 1' 37' 42.9''$  (RT)  
 $D = 0' 42' 58.3''$   
 $L = 227.39'$   
 $T = 113.71'$   
 $R = 8,000.00'$   
 $e = \text{MATCH EXIST.}$

**30' x 15' x 3'**  
**4 ft. weir**  
**ID 1.4**

**NOTES:**  
 RETAINING WALL PIPE CROSSINGS HAVE BEEN MINIMIZED TO AVOID CONFLICTS WITH ANTICIPATED CANTILEVERED RETAINING WALL FOOTINGS.

**MATCHLINE -Y2- STA.15+50.00 SEE SHEET EC-07**

FOR -L- PROFILE SEE SHEET NO. 6  
 FOR -Y1- PROFILE SEE SHEET NO. 6  
 FOR -Y3- PROFILE SEE SHEET NO. 6  
 FOR ROADWAY PLAN SEE SHEET 04