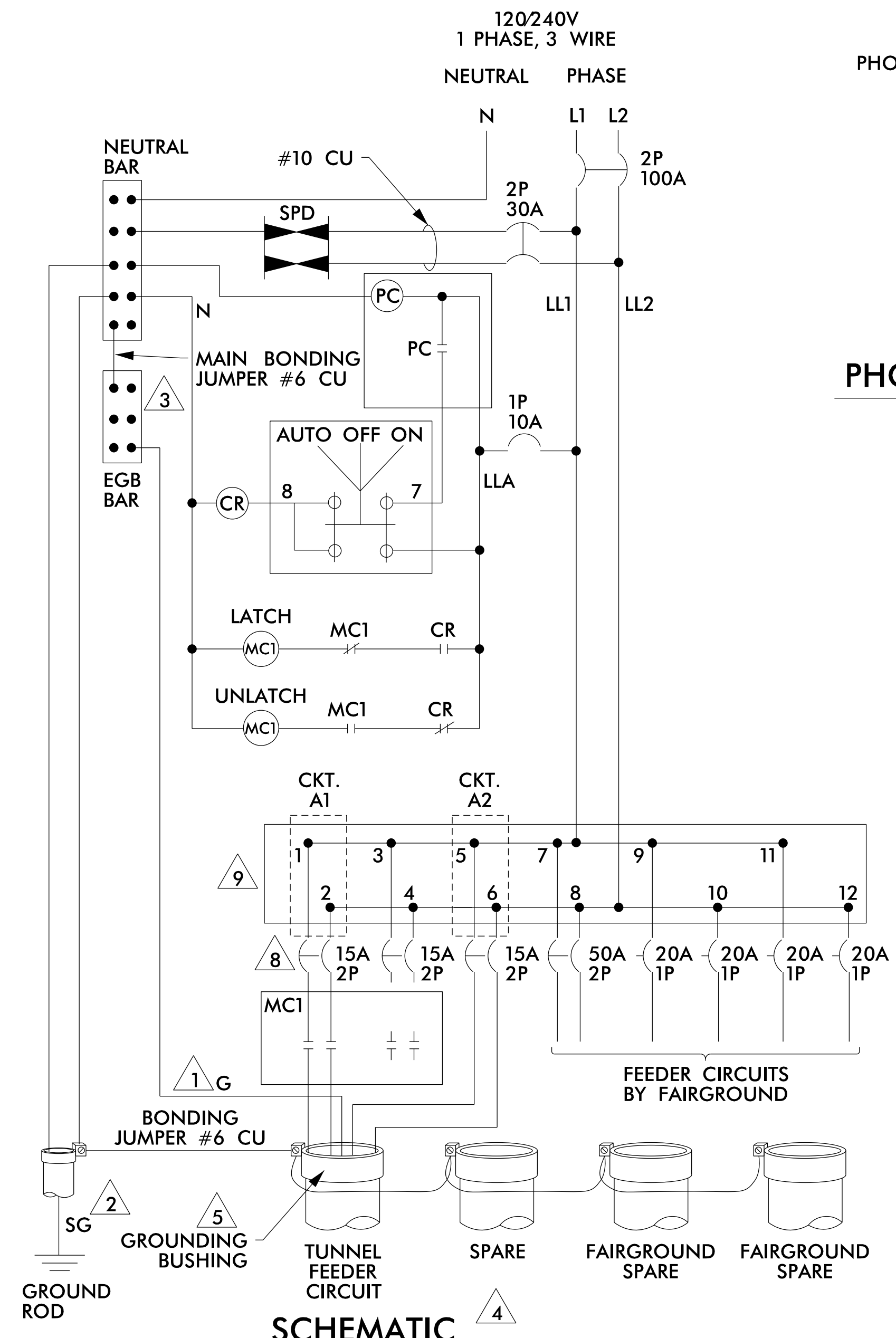
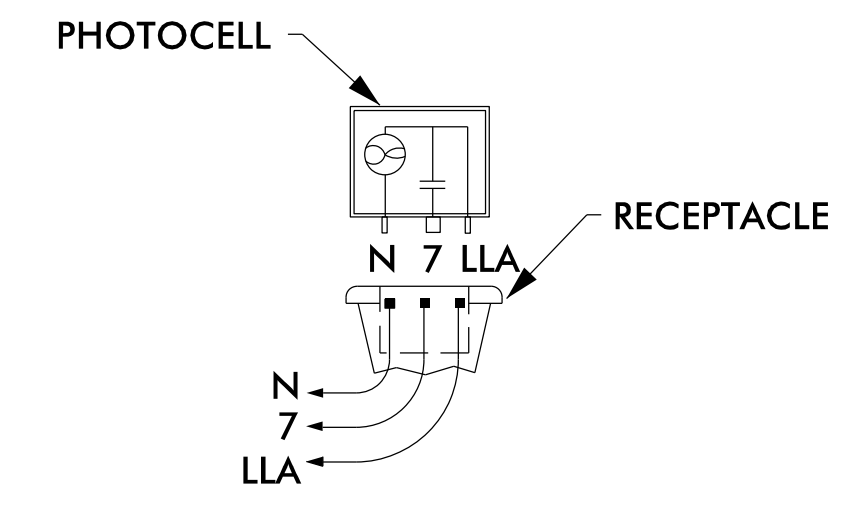


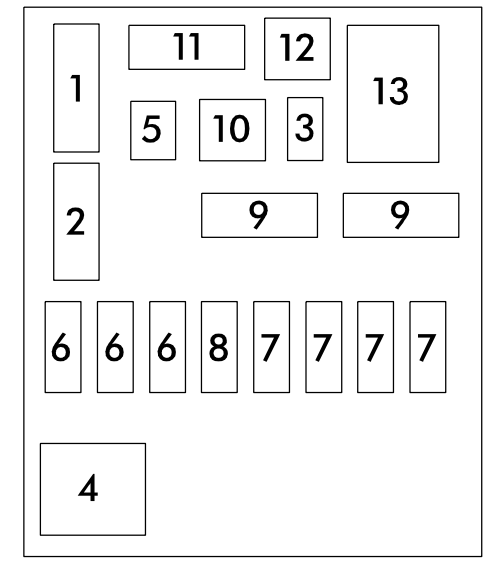
5/14/99



SCHEMATIC

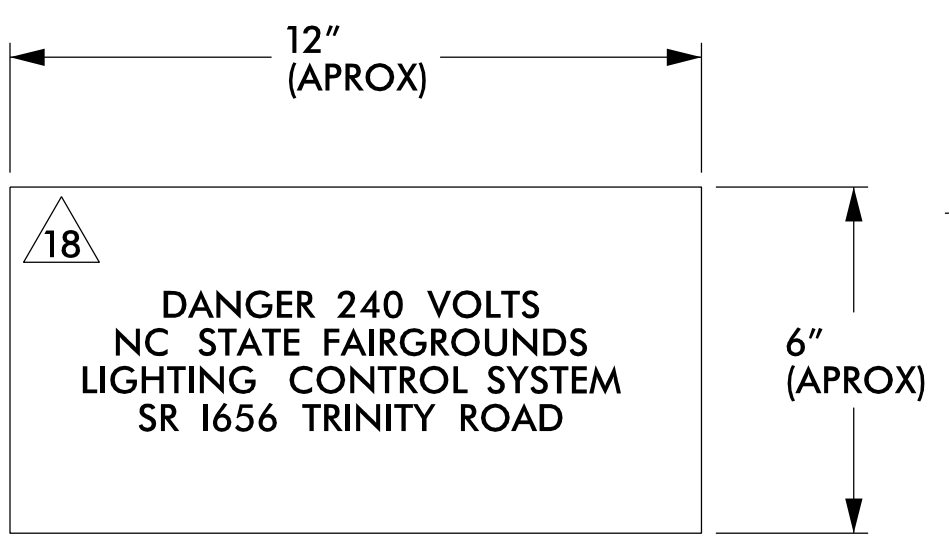


PHOTOCELL CONNECTIONS



INTERIOR PANEL

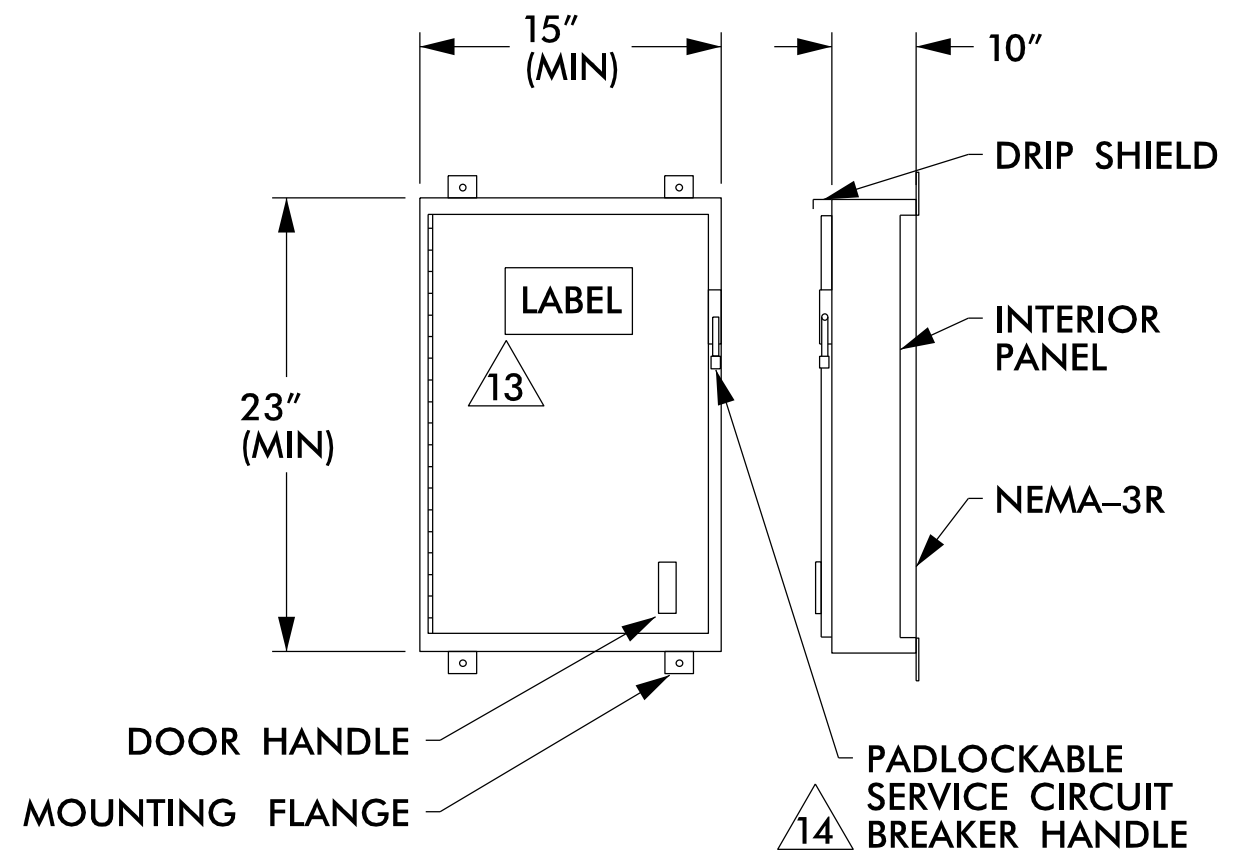
COMPONENT LAYOUT



CONTROL CENTER LABEL

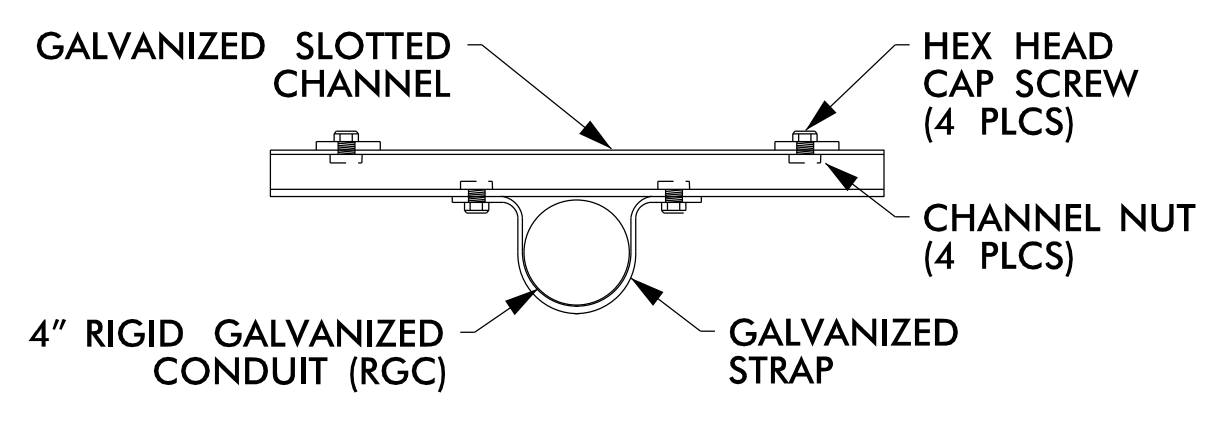
NOT TO SCALE

COMPONENT LIST			
#	QTY	DESCRIPTION	SPECIFICATIONS
1	1	NEUTRAL BAR	
2	1	EQUIPMENT GROUNDING BAR (EGB)	
3	1	CONTROL CIRCUIT BREAKER	1P, 120V, 10A
4	1	MECHANICALLY HELD CONTACTORS	4P, 240V, 30A W/120V COIL
5	1	CONTROL RELAY W/NC & NO CONTACT	120V, 10A, W/120V COIL
6	3	TUNNEL FEEDER CIRCUIT BREAKERS (INCLUDES 1 SPARE)	2P, 240V, 15A
7	4	FAIRGROUND FEEDER CIRCUIT BREAKERS	1P, 120V, 20A
8	1	FAIRGROUND FEEDER CIRCUIT BREAKER	2P, 240V, 50A
9	2	POWER DISTRIBUTION LUGS OR BLOCKS	
10	1	SELECTOR SWITCH (ON-OFF-AUTO)	120V, 10A
11	1	SURGE PROTECTION DEVICE (SPD)	SPD TYPE-1
12	1	SPD CIRCUIT BREAKER	2P, 240V, 30A
13	1	SERVICE CIRCUIT BREAKER	2P, 240V, 100A
		MOUNTING BRACKETS OR SCREW STUDS	



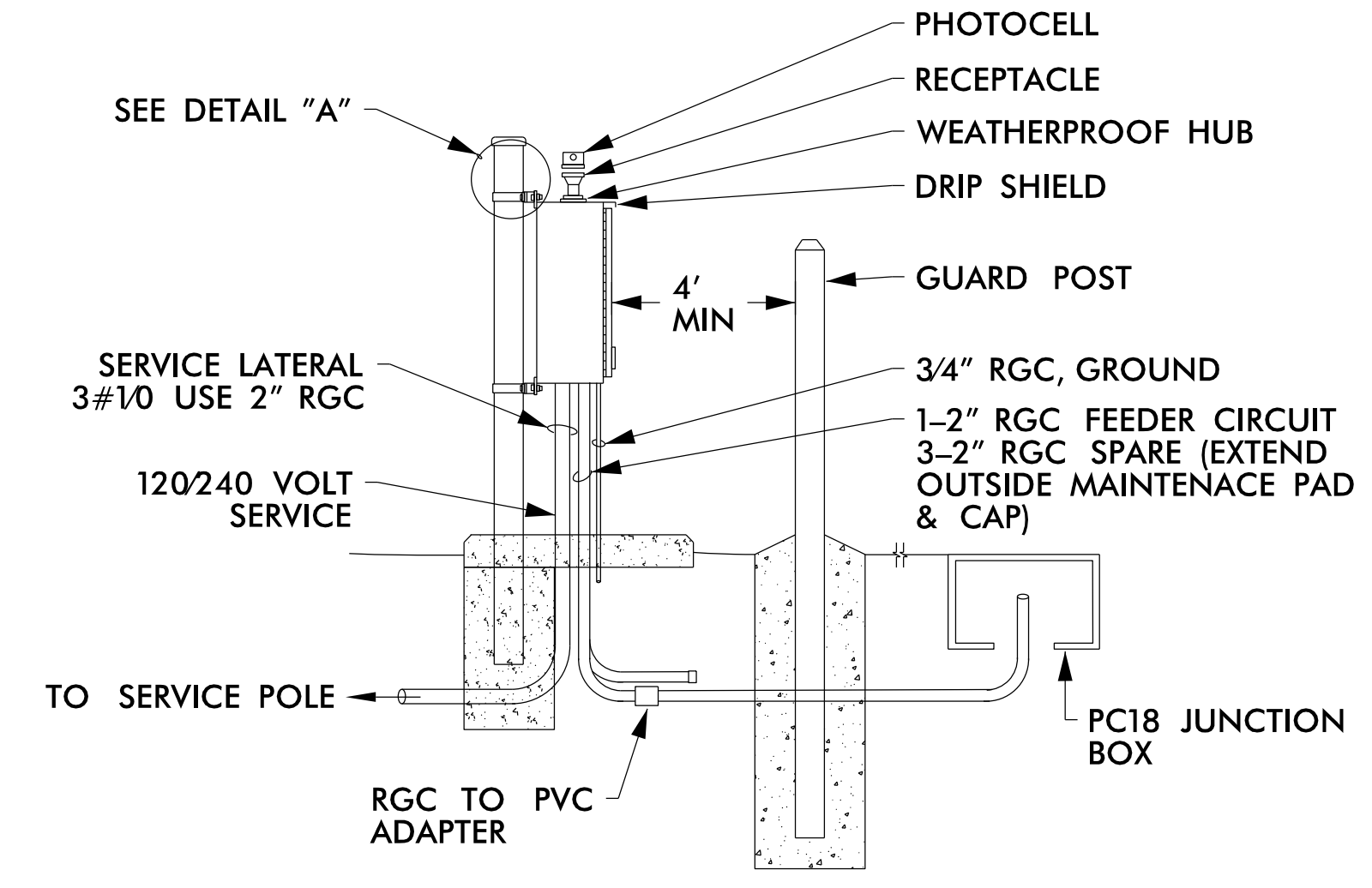
NEMA TYPE 3R STAINLESS STEEL ENCLOSURE

NOT TO SCALE



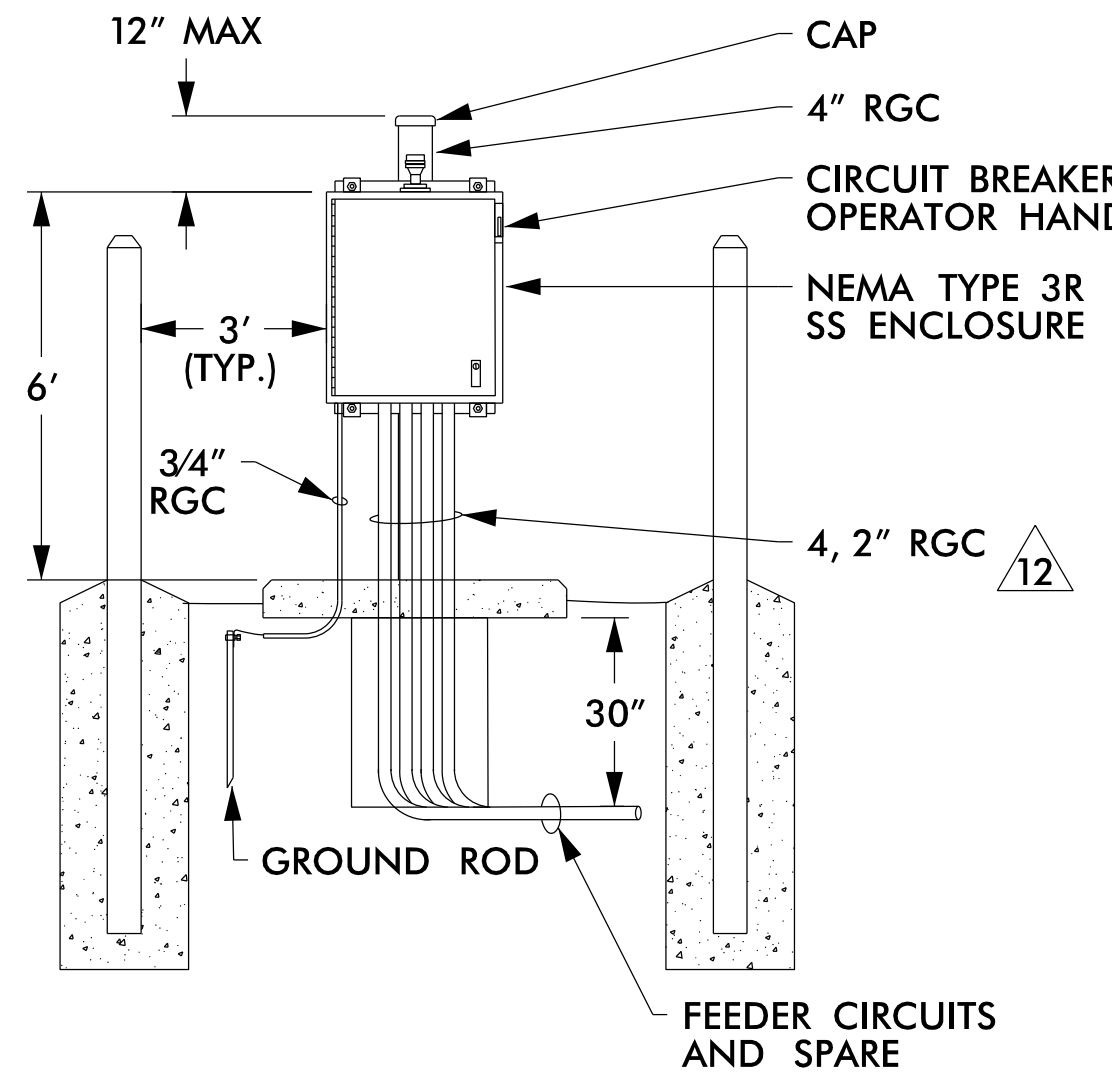
DETAIL "A"

NOT TO SCALE



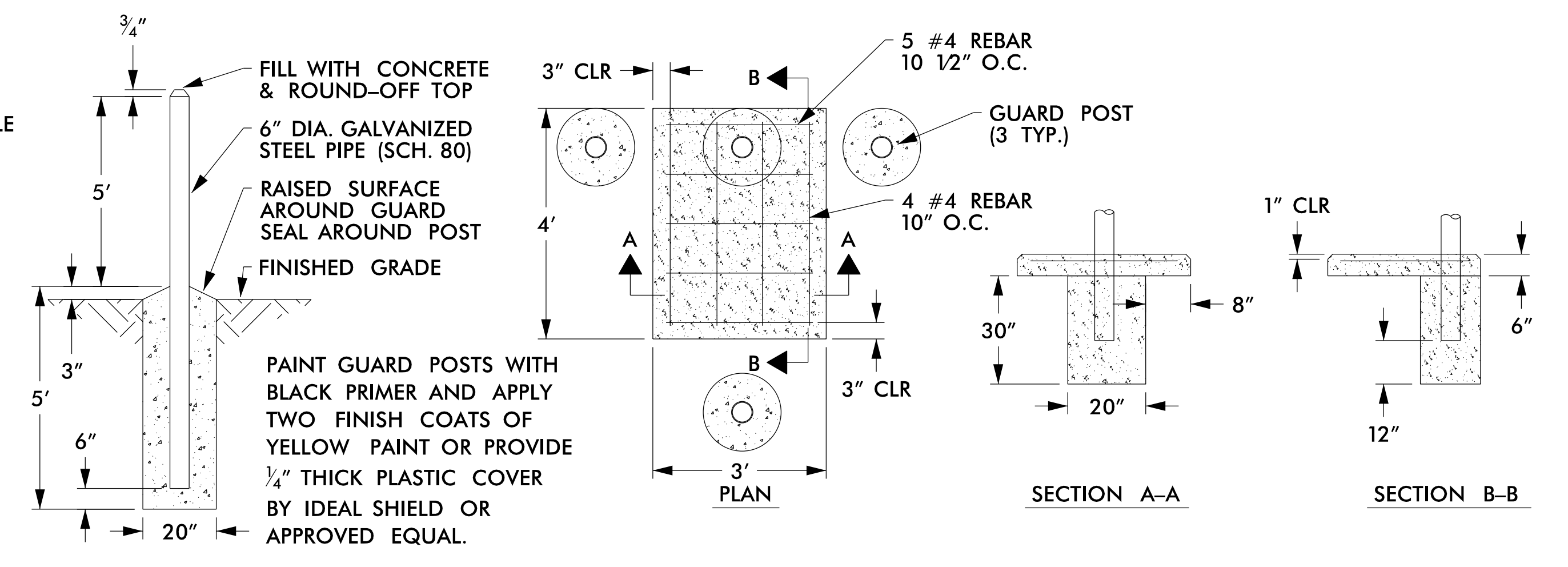
ASSEMBLY

NOT TO SCALE



GUARD POST

NOT TO SCALE



FOUNDATION

NOT TO SCALE

#

NOTES

- EQUIPMENT GROUNDS (G) SHALL BE SIZED ACCORDING TO CIRCUIT DESCRIPTION. (SEE PLAN)
- SYSTEM GROUND (SG) SHALL BE CONTINUOUS FROM THE NEUTRAL BAR TO THE GROUNDING ELECTRODE (GROUND ROD). SG CONDUCTOR SHALL BE #6 CU MIN.
- THE EQUIPMENT GROUNDING BAR (EGB) SHALL BE BONDED TO THE PANEL AND THE NEUTRAL BAR.
- FEEDER CIRCUITS NOT SHOWN ON THE PLANS SHALL NOT BE INSTALLED, BUT CONDUIT SHALL BE INSTALLED AND CAPPED.
- INSTALL A GROUNDING BUSHING ON EACH CONDUIT. CONNECT BONDING JUMPER AS REQUIRED BY NEC.
- PROVIDE MANUFACTURER SUPPLIED MOUNTING BRACKETS OR SCREW STUDS PERMANENTLY ATTACHED TO THE BACK PANEL FOR MOUNTING COMPONENTS.
- THE CONTROL SYSTEM MUST BE LABELED "SUITABLE FOR USE AS SERVICE EQUIPMENT." REFER TO NCDOT SPECIFICATION 1408-2 FOR OTHER REQUIREMENTS.
- PROVIDE SPACE FOR (4) ADDITIONAL 1P BREAKERS (NOT SHOWN).
- PROVIDE MULTI-TAP LOAD LUGS OR POWER DISTRIBUTION BLOCKS.
- CURRENT TRANSFORMER (T) CABINET AND METER MAY BE MOUNTED ON SERVICE POLE OR BACK OF CONTROL ENCLOSURE IN A LOCATION APPROVED BY THE ELECTRICAL UTILITY.
- INSTALL TYPE 1 SURGE PROTECTION DEVICE (SPD) ON THE LOAD SIDE OF THE SERVICE BREAKER.
- SEE PLANS FOR SIZE OF CONDUITS AND/OR ELECTRICAL DUCT.
- PERMANENTLY ATTACH A LABEL TO THE ENCLOSURE DOOR SHOWING THE WORK ORDER NUMBER, CONTROL SYSTEM LETTER DESIGNATION SHOWN IN THE LOAD SCHEDULE AT EACH CONTROL SYSTEM IN THE PLANS.
- PROVIDE DOOR CLOSING MECHANISM INTERLOCKED WITH CIRCUIT BREAKER HANDLE.
- STUB FEEDER CIRCUIT CONDUITS INTO JUNCTION BOX. CAP UNUSED CONDUITS. FEEDER CIRCUITS MUST BE MINIMUM 30" BELOW GRADE.
- SEE NCDOT SPECIFICATION SECTION 1407 FOR SERVICE POLE AND SERVICE LATERAL.
- SEE NCDOT SPECIFICATION SECTION 1411 FOR JUNCTION BOX INSTALLATION.
- PROVIDE SAMPLE CONTROL CENTER LABELS TO CITY FOR APPROVAL PRIOR TO ORDERING.
- PHOTO CELL SHALL BE FIELD LOCATED AND APPROVED PRIOR TO INSTALLATION.

PROJECT REFERENCE NO. W-5522	SHEET NO. L2
ELECTRICAL DESIGN ENGINEER	
10/23/2017	
Prepared in the Office of: AECOM <small>NC FIRM LICENSE No. F-0342 101 Corporate Center, Suite 414 Raleigh, NC 27607 (919) 854-8200 • (919) 854-4259(FAX)</small>	
DOCUMENT NOT CONSIDERED FINAL UNLESS ALL SIGNATURES COMPLETED	