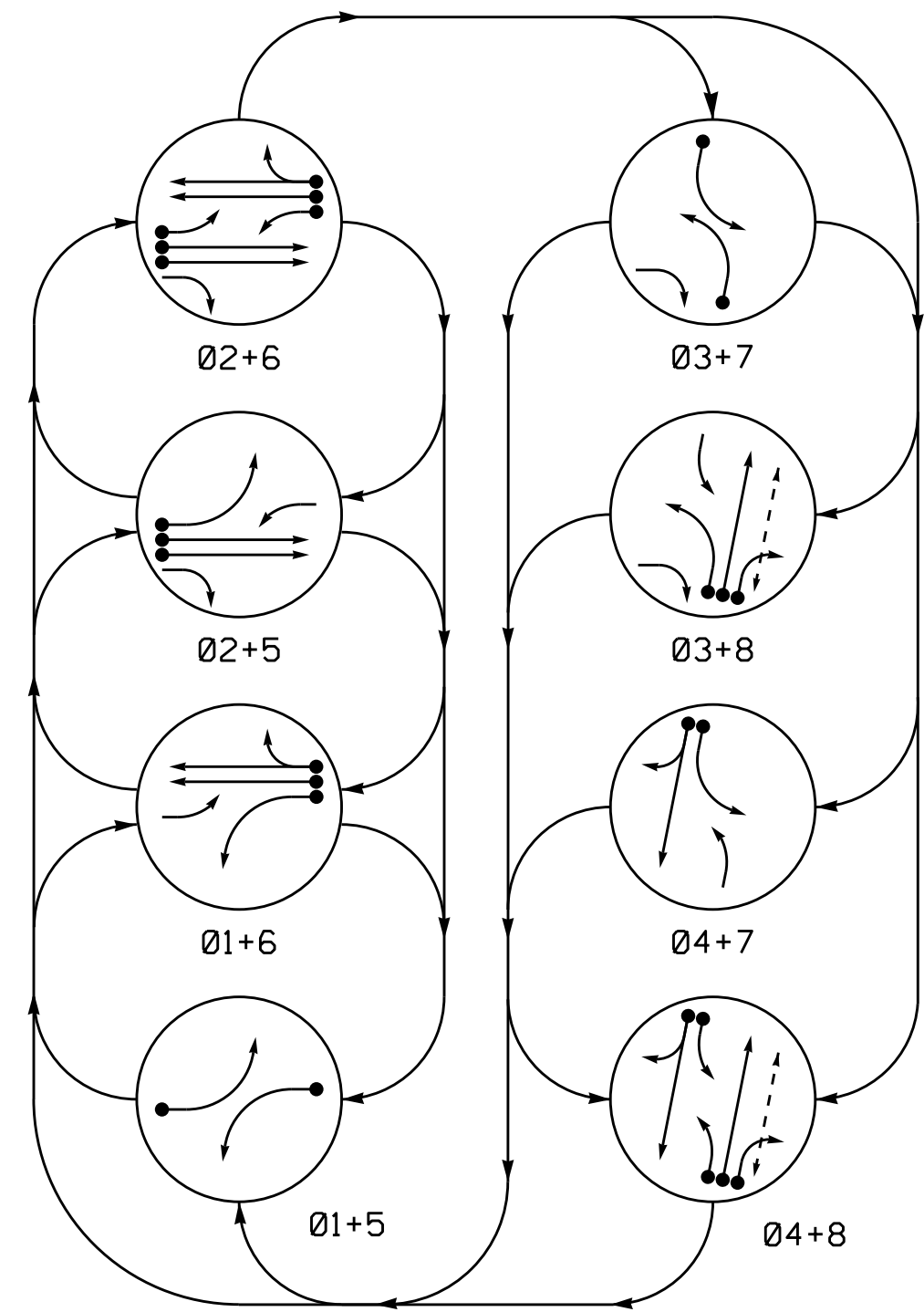


PHASING DIAGRAM



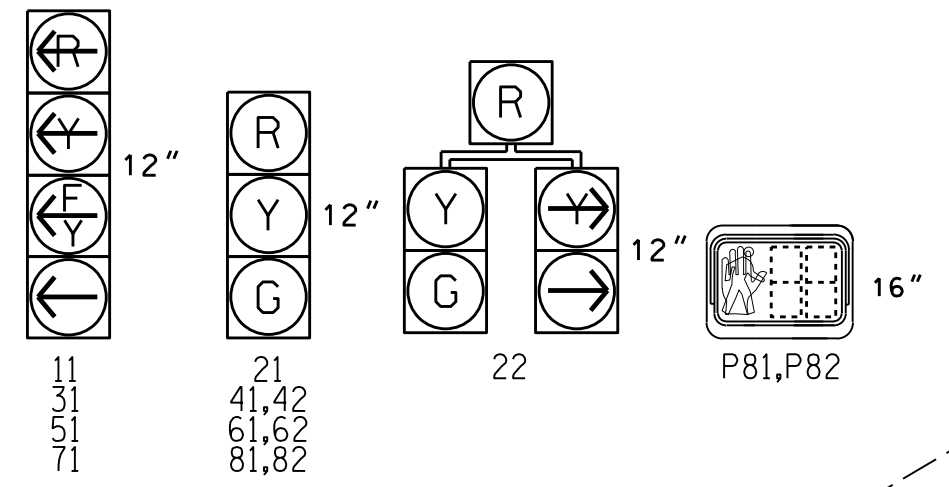
PHASING DIAGRAM DETECTION LEGEND

- DETECTED MOVEMENT
- UNDETECTED MOVEMENT (OVERLAP)
- UNSIGNALIZED MOVEMENT
- PEDESTRIAN MOVEMENT

SIGNAL FACE	PHASE							
	01+5	02+5	03+5	04+5	01+6	02+6	03+6	04+6
11	←	←	←	←	←	←	←	←
21	R	R	G	G	R	R	R	Y
22	R	R	G	G	R	R	R	Y
31	←	←	←	←	←	←	←	←
41,42	R	R	R	R	R	R	G	G
51	←	←	←	←	←	←	←	←
61,62	R	G	R	G	R	R	R	Y
71	←	←	←	←	←	←	←	←
81,82	R	R	R	R	R	G	R	G
P81,P82	DW	DW	DW	DW	DW	W	DW	W

SIGNAL FACE I.D.

All Heads L.E.D.



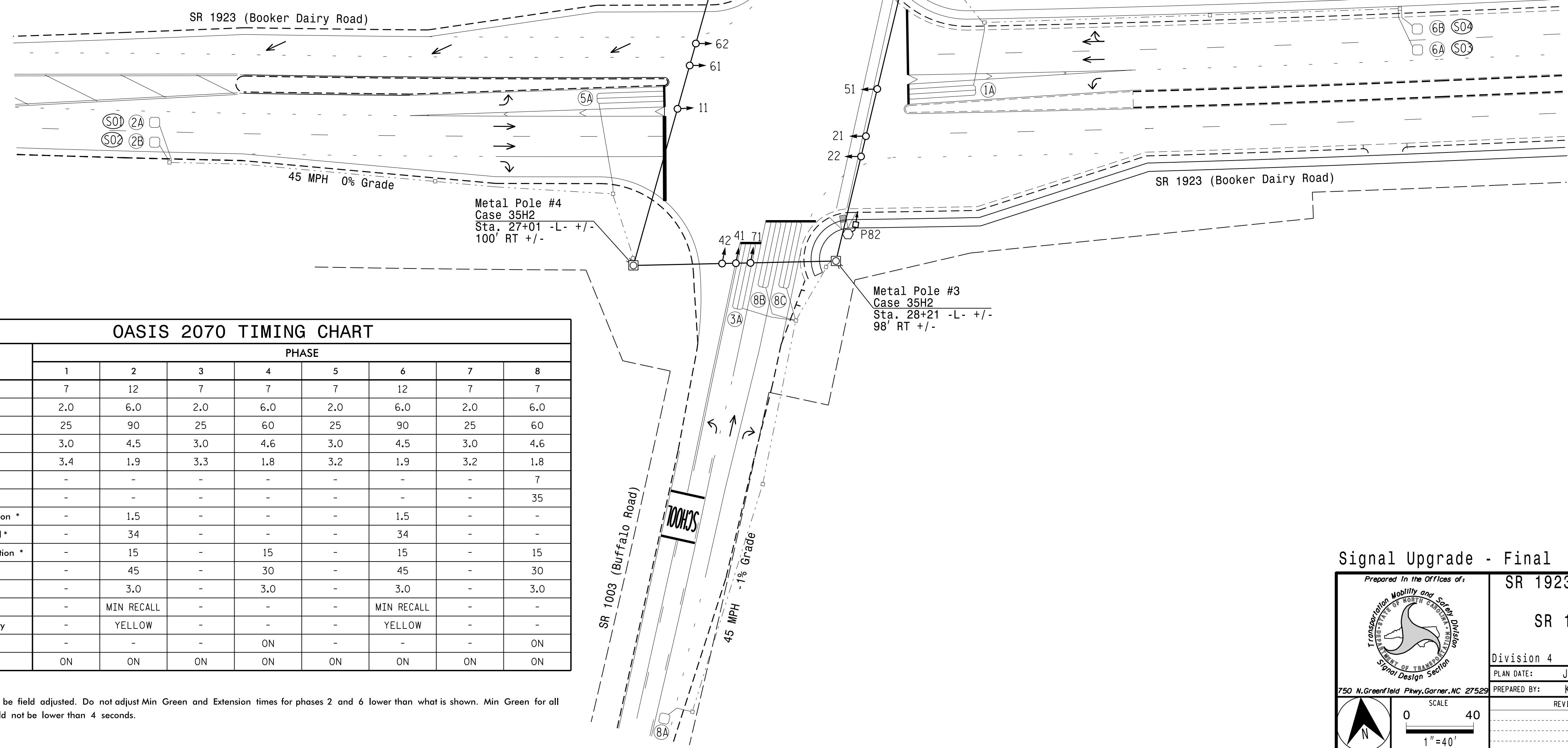
OASIS 2070 LOOP & DETECTOR INSTALLATION CHART

LOOP	SIZE (FT)	DISTANCE FROM STOPBAR (FT)	TURNS	NEW LOOP	DETECTOR PROGRAMMING				SYSTEM LOOP	NEW CARD	
					PHASE	CALLING	EXTENSION	FULL TIME DELAY			
1A	6X40	0	2-4-2	Y	1	Y	Y	-	15	-	Y
2A/S01	6X6	300	6	Y	2	Y	Y	-	-	-	Y
2B/S02	6X6	300	6	Y	2	Y	Y	-	-	-	Y
3A	6X40	0	2-4-2	Y	3	Y	Y	-	15	-	Y
4A	6X6	300	5	Y	4	-	Y	-	-	-	Y
4B	6X40	0	2-4-2	Y	4	Y	Y	2.0	5	-	Y
5A	6X40	0	2-4-2	Y	5	Y	Y	-	15	-	Y
6A/S03	6X6	300	4	Y	6	Y	Y	-	-	-	Y
6B/S04	6X6	300	4	Y	6	Y	Y	-	-	-	Y
7A	6X40	0	2-4-2	Y	7	Y	Y	-	15	-	Y
8A	6X6	300	6	Y	8	-	Y	-	-	-	Y
8B	6X40	0	2-4-2	Y	8	Y	Y	2.0	5	-	Y
8C	6X40	0	2-4-2	Y	8	Y	Y	-	15	-	Y

8 Phase Fully Actuated Booker Dairy Road CLS

NOTES

- Refer to "Roadway Standard Drawings NCDOT" dated January 2018 and "Standard Specifications for Roads and Structures" dated January 2018.
- Do not program signal for late night flashing operation unless otherwise directed by the Engineer.
- Phase 1 and/or phase 5 may be lagged.
- Phase 3 and/or phase 7 may be lagged.
- Set all detector units to presence mode.
- Omit "WALK" and flashing "DON'T WALK" with no pedestrian calls.
- Program pedestrian heads to countdown the flashing "Don't Walk" time only.
- Pedestrian pedestals are conceptual and shown for reference only. See sheets P1-P3 for pushbutton location details.
- Maximum times shown in timing chart are for free-run operation only. Coordinated signal system timing values supersede these values.
- Closed loop system data: Controller Asset #: 0444.



OASIS 2070 TIMING CHART

FEATURE	PHASE							
	1	2	3	4	5	6	7	8
Min Green 1 *	7	12	7	7	7	12	7	7
Extension 1 *	2.0	6.0	2.0	6.0	2.0	6.0	2.0	6.0
Max Green 1 *	25	90	25	60	25	90	25	60
Yellow Clearance	3.0	4.5	3.0	4.6	3.0	4.5	3.0	4.6
Red Clearance	3.4	1.9	3.3	1.8	3.2	1.9	3.2	1.8
Walk 1 *	-	-	-	-	-	-	-	7
Don't Walk 1	-	-	-	-	-	-	-	35
Seconds Per Actuation *	-	1.5	-	-	-	1.5	-	-
Max Variable Initial *	-	34	-	-	-	34	-	-
Time Before Reduction *	-	15	-	15	-	15	-	15
Time To Reduce *	-	45	-	30	-	45	-	30
Minimum Gap	-	3.0	-	3.0	-	3.0	-	3.0
Recall Mode	-	MIN RECALL	-	-	-	MIN RECALL	-	-
Vehicle Call Memory	-	YELLOW	-	-	-	YELLOW	-	-
Dual Entry	-	-	-	ON	-	-	-	ON
Simultaneous Gap	ON	ON	ON	ON	ON	ON	ON	ON

\* These values may be field adjusted. Do not adjust Min Green and Extension times for phases 2 and 6 lower than what is shown. Min Green for all other phases should not be lower than 4 seconds.

LEGEND

- | PROPOSED | EXISTING |
|----------|----------|
|          |          |
|          |          |
|          |          |
|          |          |
|          |          |
|          |          |
|          |          |
|          |          |
|          |          |
|          |          |
|          |          |
|          |          |
|          |          |
|          |          |
|          |          |
|          |          |

Signal Upgrade - Final

750 N. Greenfield Pkwy, Garner, NC 27529

SR 1923 (Booker Dairy Road)  
at  
SR 1003 (Buffalo Road)

Division 4 Johnston County Smithfield

PLAN DATE: June 2017 REVIEWED BY: JPG

PREPARED BY: KGP, Jr. REVIEWED BY:

DOCUMENT NOT CONSIDERED FINAL UNLESS ALL SIGNATURES COMPLETED

SEAL

DATE: 9/8/2017

SIG. INVENTORY NO. 04-0444

04-0444-2017\_11:40 R:\Projects\0444\Signal\040444.dwg, s:\g\_bdn\_20170808\_f\nci.dgn JGallaway