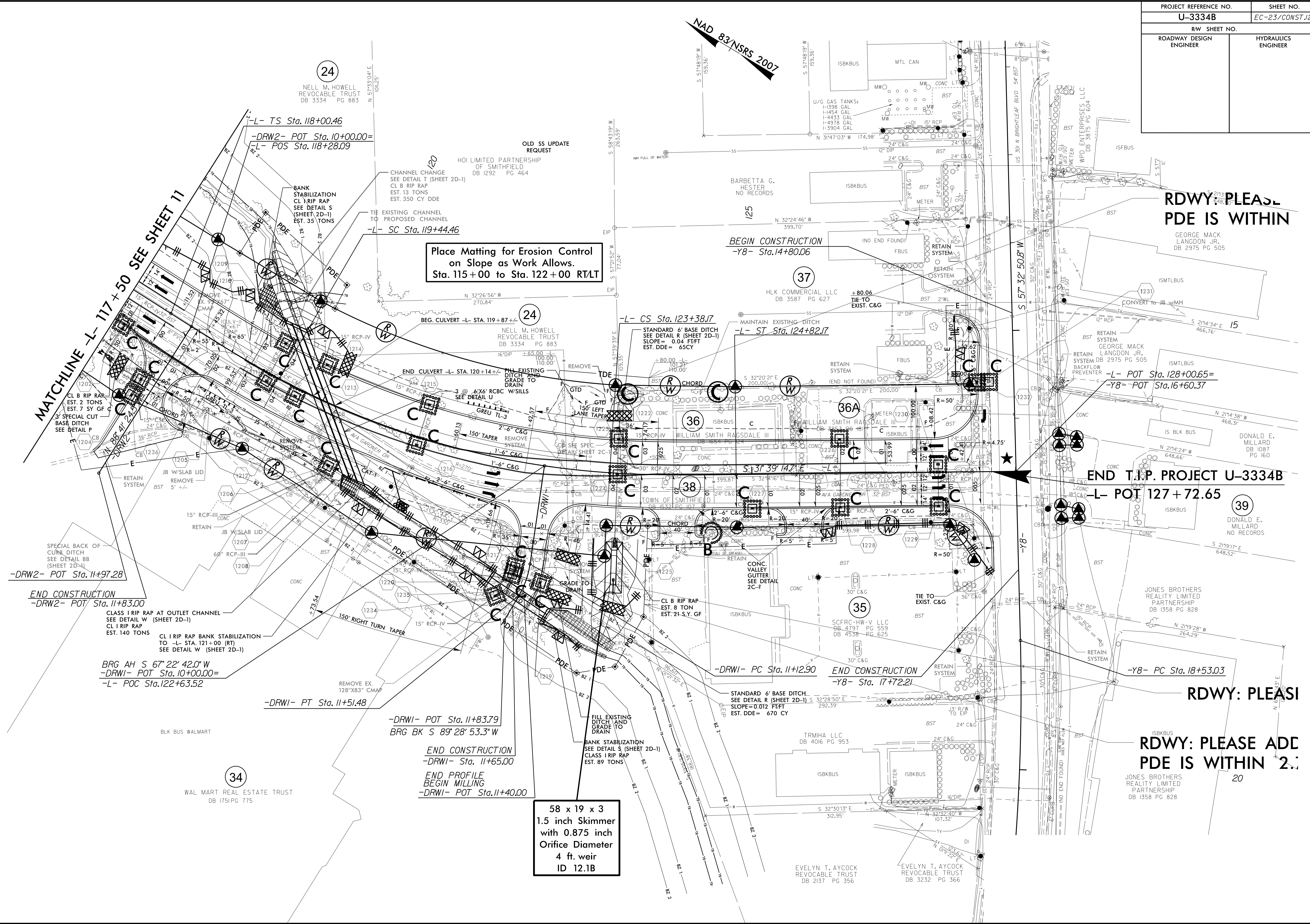


| | |
|-------------------------|---------------------|
| PROJECT REFERENCE NO. | SHEET NO. |
| U-3334B | EC-23/CONST.2 |
| RW SHEET NO. | |
| ROADWAY DESIGN ENGINEER | HYDRAULICS ENGINEER |

NAD 83/NSRS 2007



Place Matting for Erosion Control on Slope as Work Allows. Sta. 115+00 to Sta. 122+00 RT/LT

RDWY: PLEASE PDE IS WITHIN

END T.I.P. PROJECT U-3334B -L- POT 127+72.65

RDWY: PLEASE

RDWY: PLEASE ADD PDE IS WITHIN 2.0'

58 x 19 x 3
1.5 inch Skimmer
with 0.875 inch
Orifice Diameter
4 ft. weir
ID 12.1B

8/17/99
 23-SEP-2017 14:32
 D:\s199\U-3334B-EC.ps12.dgn
 R:\s199\U-3334B-EC.ps12.dgn
 R:\s199\U-3334B-EC.ps12.dgn