
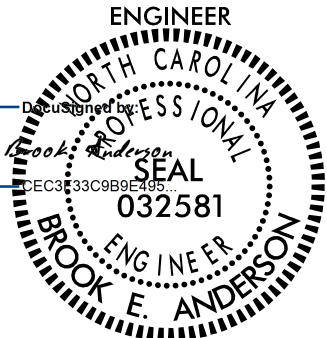


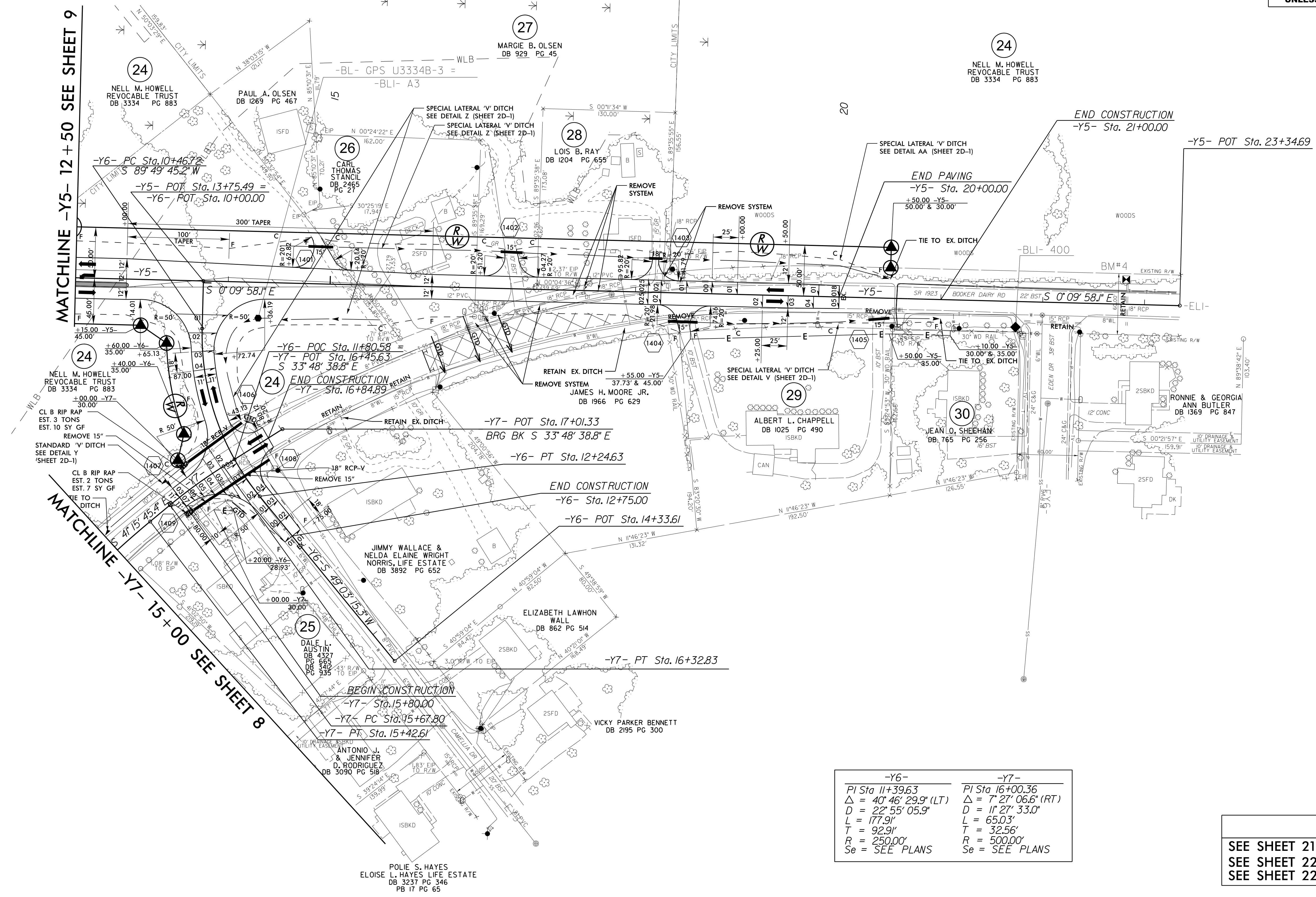
PROJECT REFERENCE NO. <b>U-3334B</b>	SHEET NO. <b>14</b>
RW SHEET NO.	
ROADWAY DESIGN ENGINEER 	HYDRAULICS ENGINEER 
12/5/2017	12/5/2017
<b>DOCUMENT NOT CONSIDERED FINAL UNLESS ALL SIGNATURES COMPLETED</b>	

NAD 83/NSRS 2007

REVISIONS

MATCHLINE -Y5- 12 + 50 SEE SHEET 9

MATCHLINE -Y7- 15 + 00 SEE SHEET 8



-Y6-	-Y7-
PI Sta 11+39.63	PI Sta 16+00.36
$\Delta = 40^{\circ} 46' 29.9"$ (LT)	$\Delta = 7^{\circ} 27' 06.6"$ (RT)
D = 22' 55' 05.9"	D = 11' 27' 33.0"
L = 177.91'	L = 65.03'
T = 92.91'	T = 32.56'
R = 250.00'	R = 500.00'
Se = SEE PLANS	Se = SEE PLANS

**NOTES:**  
 SEE SHEET 21 FOR -Y5- PROFILE.  
 SEE SHEET 22 FOR -Y6- PROFILE.  
 SEE SHEET 22 FOR -Y7- PROFILE.