

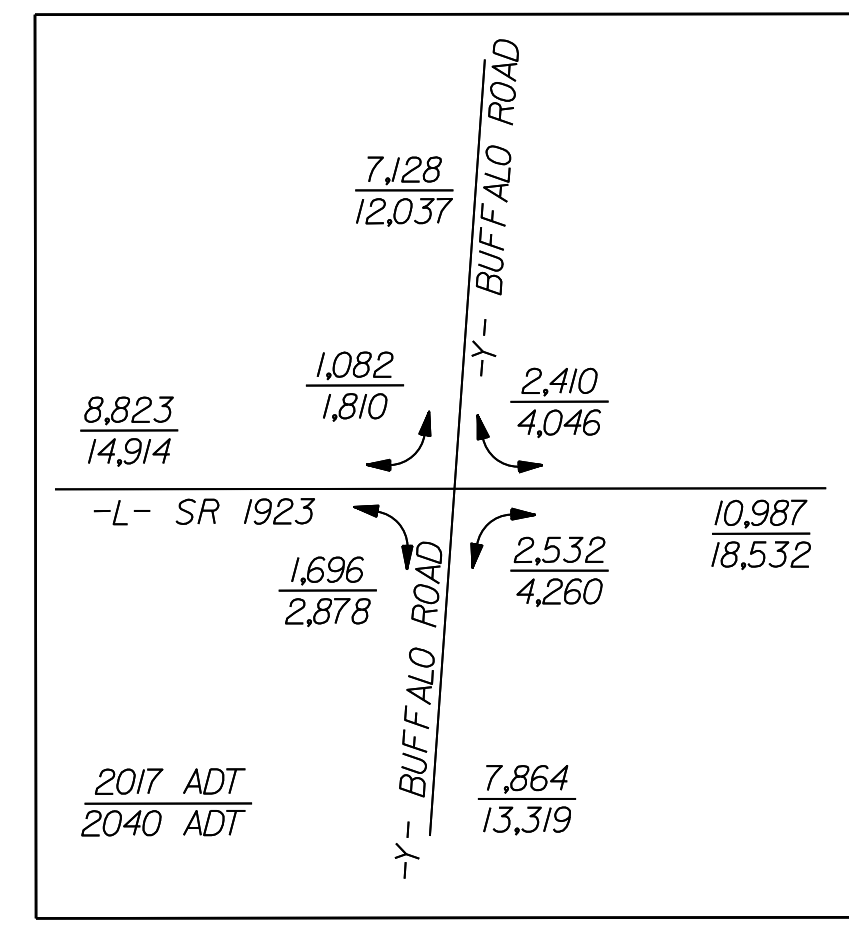
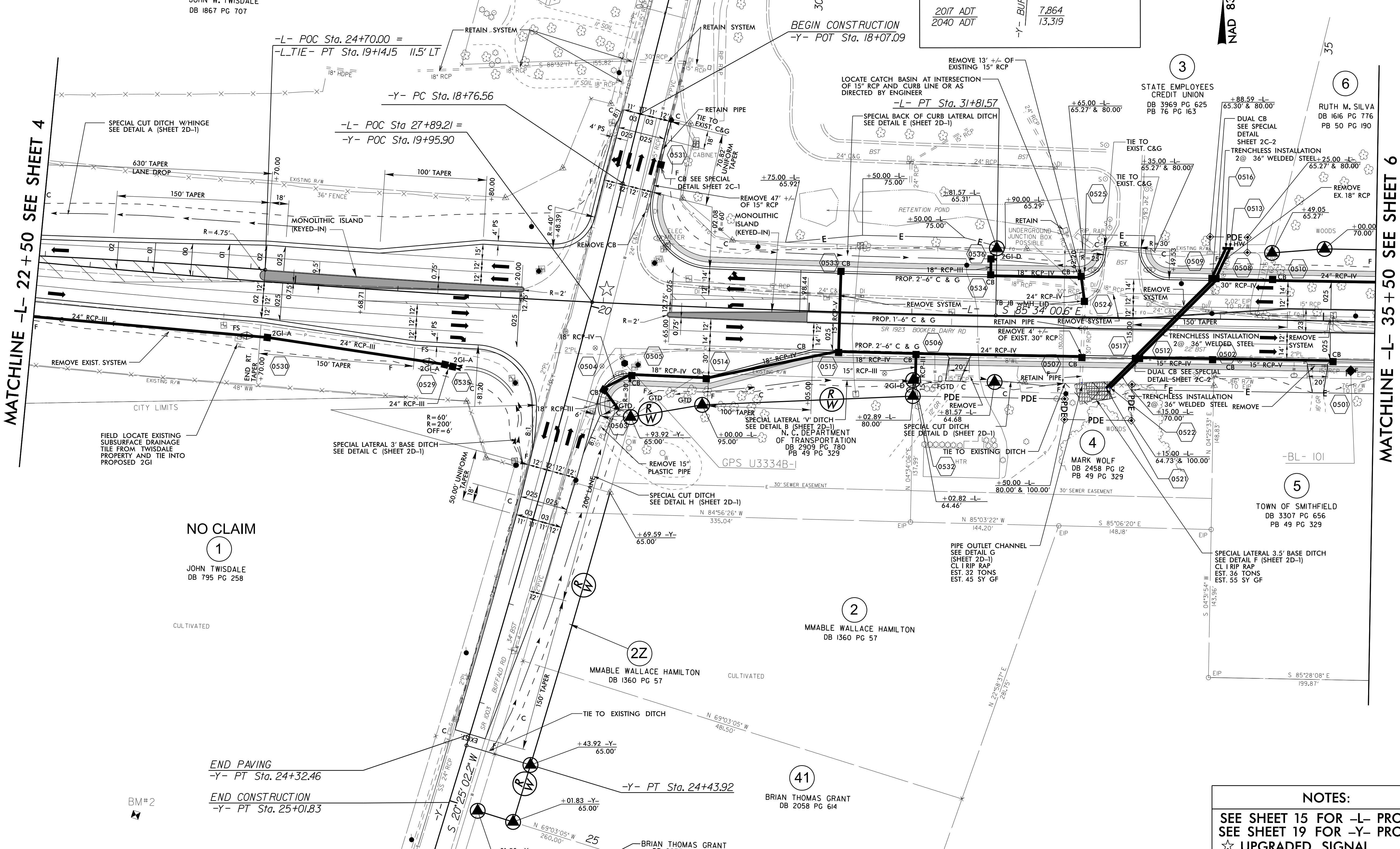
8/17/99

-L-TIE-	-L-TIE-	-L-	-Y-
PI Sta 13+24.14	PI Sta 17+81.02	PI Sta 25+21.18	PI Sta 21+60.30
$\Delta = 4' 56' 57.6" (LT)$	$\Delta = 2' 02' 03.4" (RT)$	$\Delta = 6' 18' 45.6" (LT)$	$\Delta = 2' 50' 12.5" (RT)$
$D = 0' 45' 50.2"$	$D = 0' 45' 50.2"$	$D = 0' 28' 38.9"$	$D = 0' 30' 00.0"$
$L = 647.87'$	$L = 266.28'$	$L = 1,322.12'$	$L = 567.36'$
$T = 324.14'$	$T = 133.16'$	$T = 661.73'$	$T = 283.74'$
$R = 7,500.00'$	$R = 7,500.00'$	$R = 12,000.00'$	$R = 11,459.13'$
$Se = N/A$	$Se = N/A$	$Se = NC$	$Se = NC$

Stantec
 Stantec Consulting Services Inc.
 801 Jones Franklin Road
 Suite 300
 Raleigh, NC 27606
 Tel: (919) 851-8866
 Fax: (919) 851-7024
 www.stantec.com
 License No. F-0672

PROJECT REFERENCE NO. U-3334B	SHEET NO. 5
RW SHEET NO.	
ROADWAY DESIGN ENGINEER <i>[Signature]</i> SEAL 022037	HYDRAULICS ENGINEER <i>[Signature]</i> SEAL 032581
1/9/2018	1/9/2018
DOCUMENT NOT CONSIDERED FINAL UNLESS ALL SIGNATURES COMPLETED	

NAD 83/NSRS 2007



REVISIONS

NO CLAIM
 1
 JOHN TWISDALE
 DB 795 PG 258

NOTES:
 SEE SHEET 15 FOR -L- PROFILE
 SEE SHEET 19 FOR -Y- PROFILE
 ☆ UPGRADED SIGNAL

1/9/2018
L:\Roadway\Proj\U3334B_rdy.psh_s5.dgn