

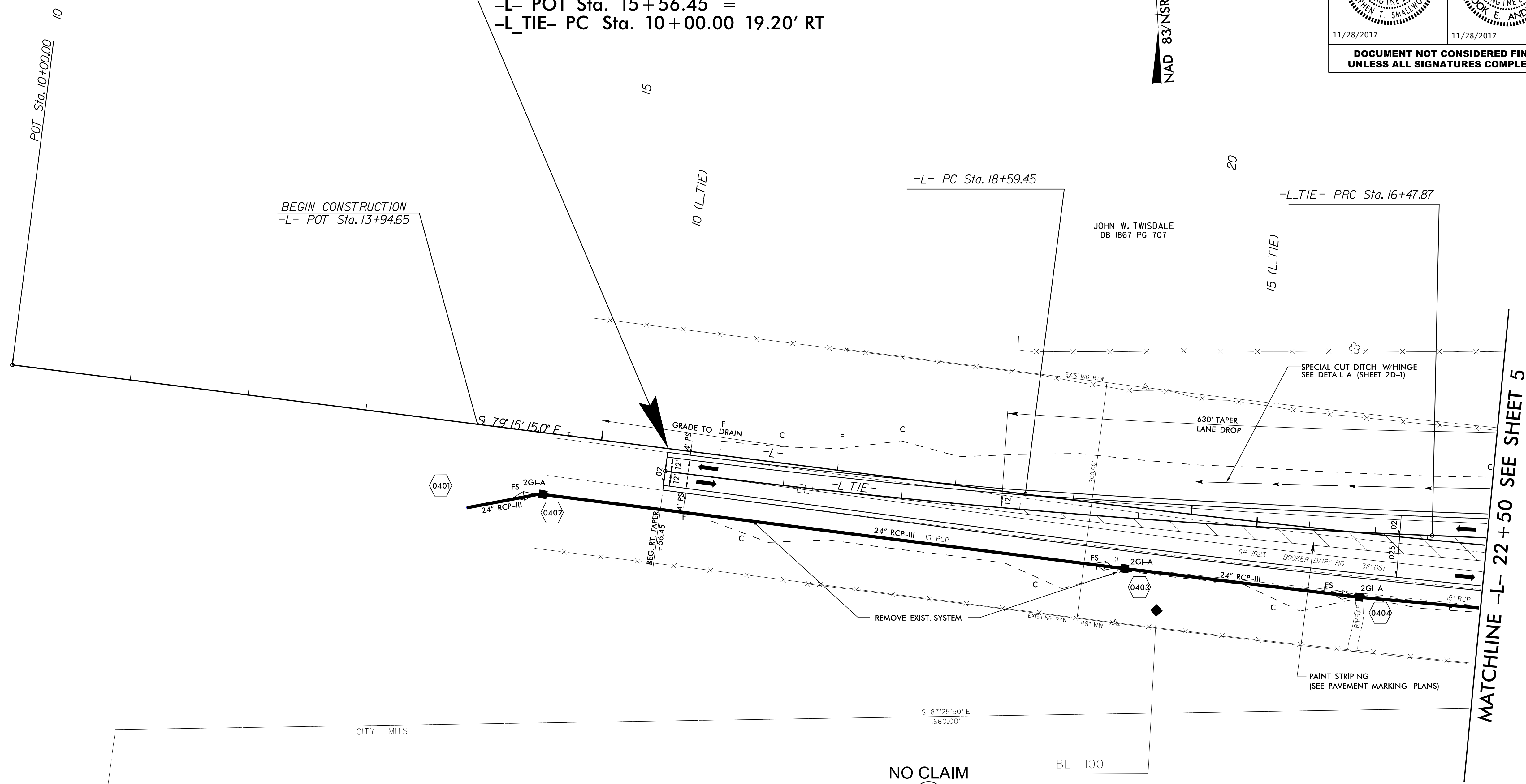
8/17/99

Stantec
 Stantec Consulting Services Inc.
 801 Jones Franklin Road
 Suite 300
 Raleigh, NC 27606
 Tel: (919) 851-8866
 Fax: (919) 851-7024
 www.stantec.com
 License No. F-0672

PROJECT REFERENCE NO. U-3334B	SHEET NO. 4
RW SHEET NO.	
ROADWAY DESIGN ENGINEER SEAL 022037 STEPHEN T. SMALLWOOD	HYDRAULICS ENGINEER SEAL 032581 BROOK E. ANDERSON
11/28/2017	11/28/2017
DOCUMENT NOT CONSIDERED FINAL UNLESS ALL SIGNATURES COMPLETED	

NAD 83/NSRS 2007

BEGIN T.I.P. PROJECT U-3334B
 -L- POT Sta. 15+56.45 =
 -L_TIE- PC Sta. 10+00.00 19.20' RT



REVISIONS

MATCHLINE -L- 22 + 50 SEE SHEET 5

NO CLAIM
 1
 JOHN TWISDALE
 DB 795 PG 258

-L-	-L_TIE-	-L_TIE-
PI Sta 25+21.8	PI Sta 13+24.4	PI Sta 17+81.02
$\Delta = 6' 18' 45.6''$ (LT)	$\Delta = 4' 56' 57.6''$ (LT)	$\Delta = 2' 02' 03.4''$ (RT)
$D = 0' 28' 38.9''$	$D = 0' 45' 50.2''$	$D = 0' 45' 50.2''$
$L = 1,322.12'$	$L = 647.87'$	$L = 266.28'$
$T = 661.73'$	$T = 324.14'$	$T = 133.16'$
$R = 12,000.00'$	$R = 7,500.00'$	$R = 7,500.00'$
Se = NC	Se = N/A	Se = N/A

NOTES:
 SEE SHEET 15 FOR -L- PROFILE

11/27/2017
 I:\Roadway\Proj\U3334B_rnd\j.psh_s4.dgn
 c:\p21\p21