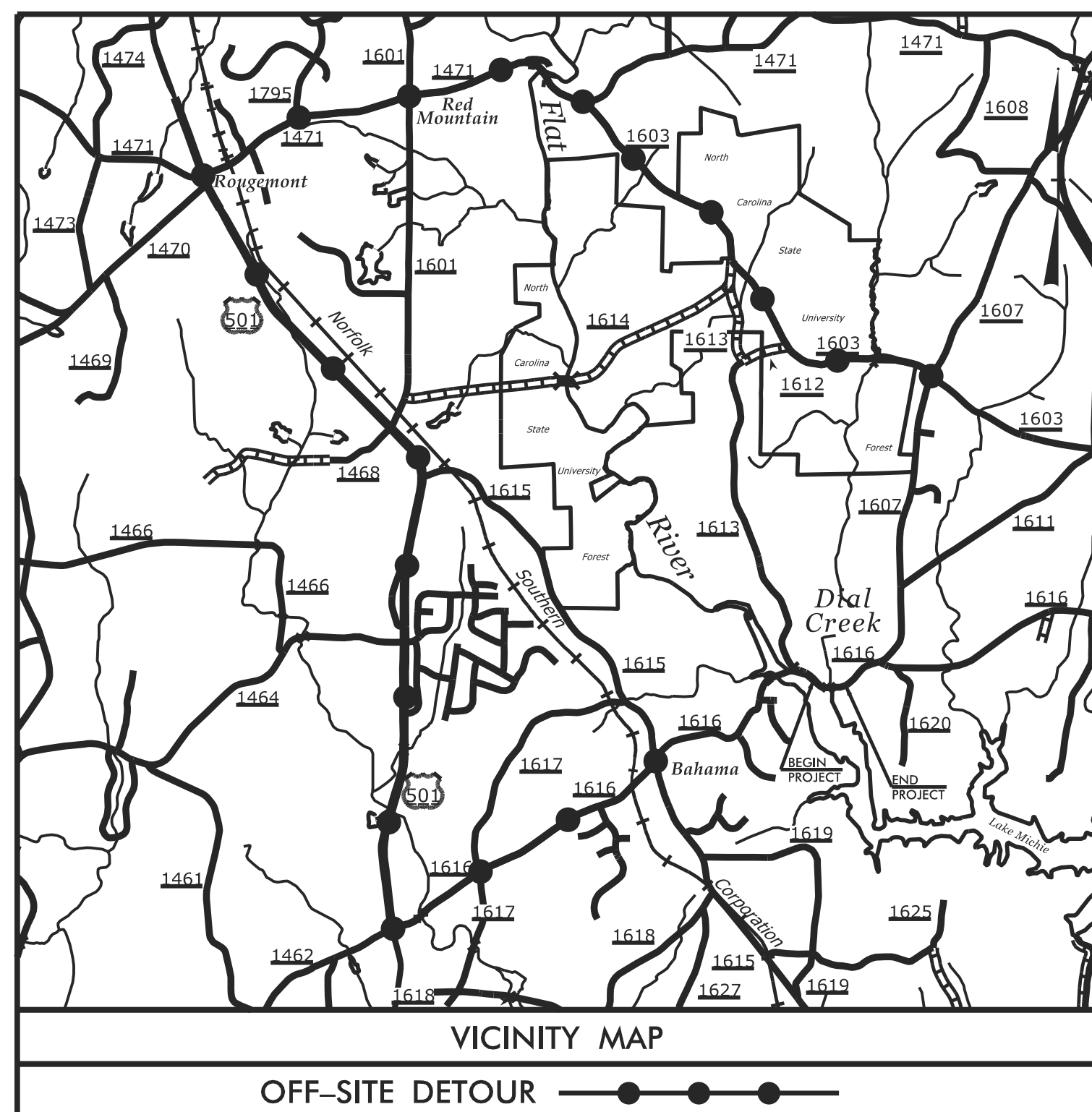


**This electronic collection of documents is provided  
for the convenience of the user  
and is Not a Certified Document –**

**The documents contained herein were originally issued  
and sealed by the individuals whose names and license  
numbers appear on each page, on the dates appearing  
with their signature on that page.**

**This file or an individual page  
shall not be considered a certified document.**

**T.I.P. PROJECT: B-4943**



See Sheet 1A For Index of Sheets  
See Sheet 1B For Conventional Symbols

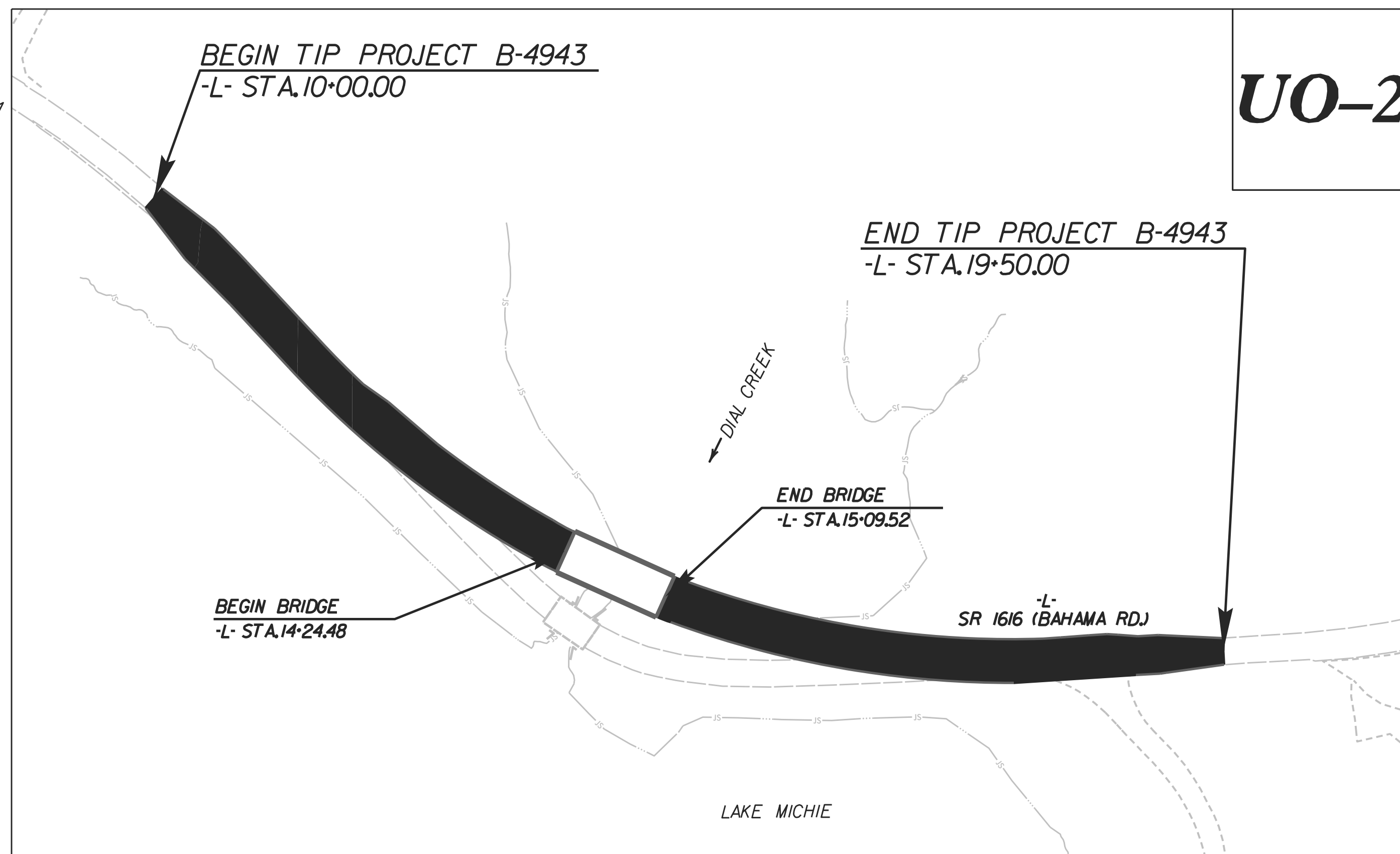
STATE OF NORTH CAROLINA  
DIVISION OF HIGHWAYS

**UTILITIES BY OTHERS PLANS  
DURHAM COUNTY**

**LOCATION: BRIDGE NO. 20 OVER DIAL CREEK  
ON SR 1616 (BAHAMA RD.)**

**TYPE OF WORK: UTILITY RELOCATION**

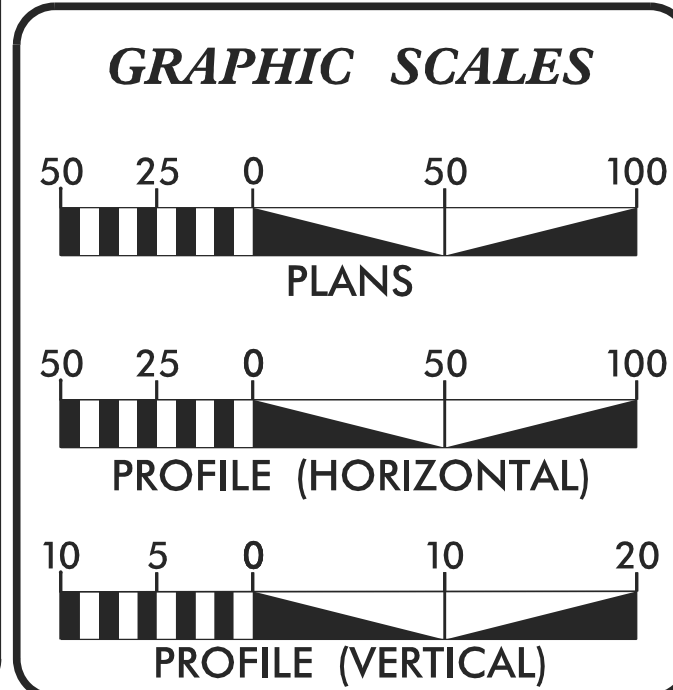
T.I.P. NO.	SHEET NO.
B-4943	UO-1



**UO-2**

**CONTRACT:**

CLEARING ON THIS PROJECT SHALL BE TO LIMITS ESTABLISHED USING METHOD III.  
THIS PROJECT IS NOT WITHIN ANY MUNICIPAL BOUNDARIES.



<b>INDEX OF SHEETS</b>	
SHEET NO.	DESCRIPTION
UO-1	TITLE SHEET
UO-2	UTILITIES BY OTHERS PLAN SHEET

<b>UTILITY OWNERS ON PROJECT</b>
(1) FRONTIER COMMUNICATIONS (TELECOMMUNICATIONS)

**Cardno**  
CARDNO (NC), INC.  
9800 SOUTHERN PINE BOULEVARD  
SUITE 1  
CHARLOTTE NC 28273  
PHONE (704) 927-9700  
FAX (704) 529-3272

**STEVE TREXLER** PROJECT UTILITY COORDINATOR

PREPARED IN THE OFFICE OF:  
**DIVISION OF HIGHWAYS  
UTILITIES UNIT**

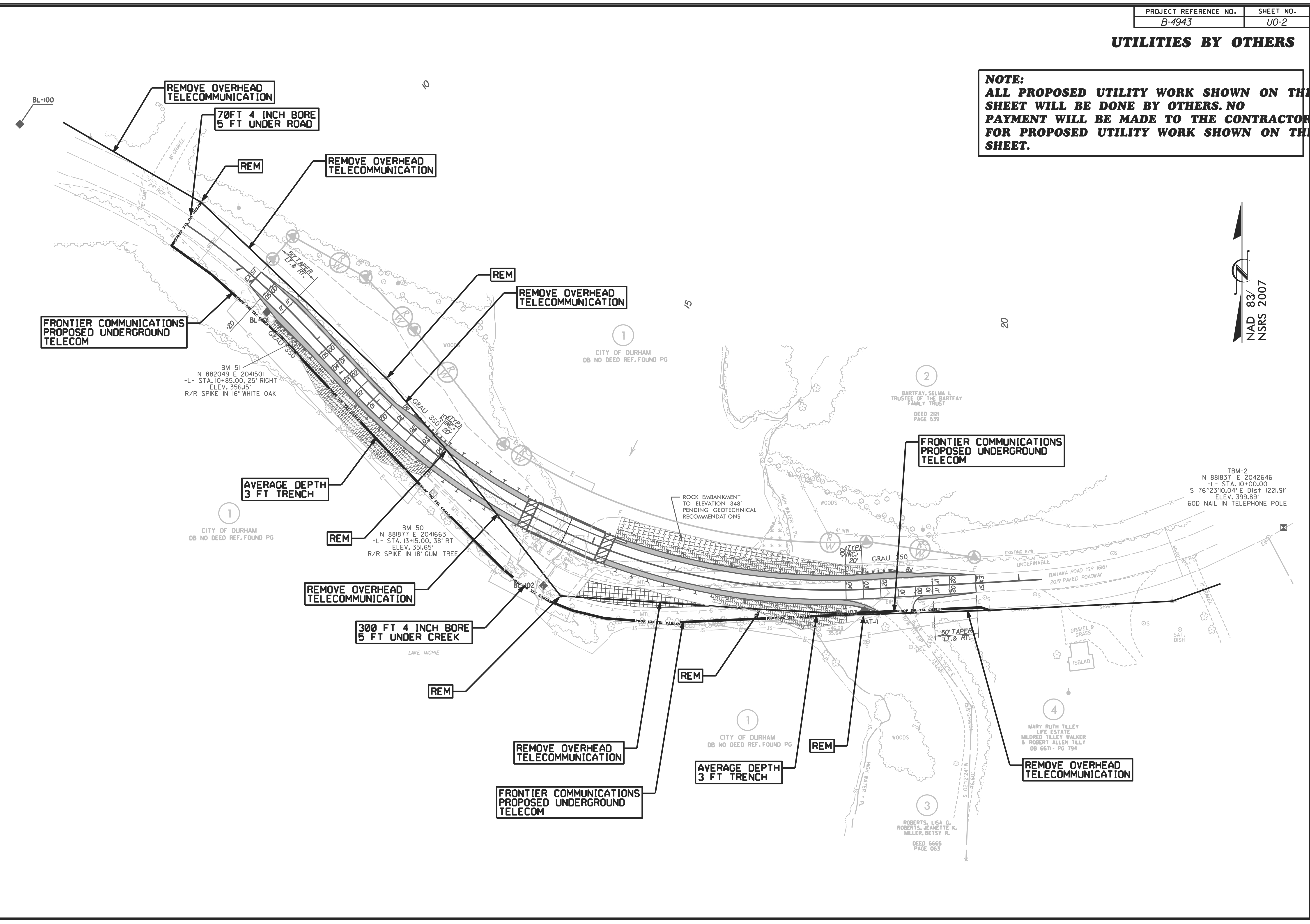
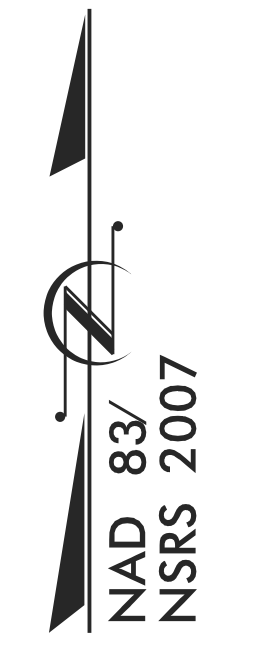
1555 MAIL SERVICES CENTER  
RALEIGH NC 27699-1555  
PHONE (919) 707-6690  
FAX (919) 250-4151

<b>DONNA JACKSON, PE</b>	CENTRAL REGION MANAGER
<b>DON PROPER</b>	UTILITIES PROJECT ENGINEER
<b>ED REAMS</b>	UTILITIES AREA COORDINATOR
<b>TANGA SAMPSON</b>	UTILITIES COORDINATOR

\$\$\$\$\$ SYSTEM \$\$\$\$\$\$ DGN \$\$\$\$\$\$ USERNAME \$\$\$\$\$\$

**UTILITIES BY OTHERS**

**NOTE:**  
**ALL PROPOSED UTILITY WORK SHOWN ON THIS SHEET WILL BE DONE BY OTHERS. NO PAYMENT WILL BE MADE TO THE CONTRACTOR FOR PROPOSED UTILITY WORK SHOWN ON THIS SHEET.**



8/17/99  
 00 01 02 03 04 05 06 07 08 09 10 11 12 13 14 15 16 17 18 19 20 21 22 23 24 25 26 27 28 29 30 31 32 33 34 35 36 37 38 39 40 41 42 43 44 45 46 47 48 49 50 51 52 53 54 55 56 57 58 59 60 61 62 63 64 65 66 67 68 69 70 71 72 73 74 75 76 77 78 79 80 81 82 83 84 85 86 87 88 89 90 91 92 93 94 95 96 97 98 99 00