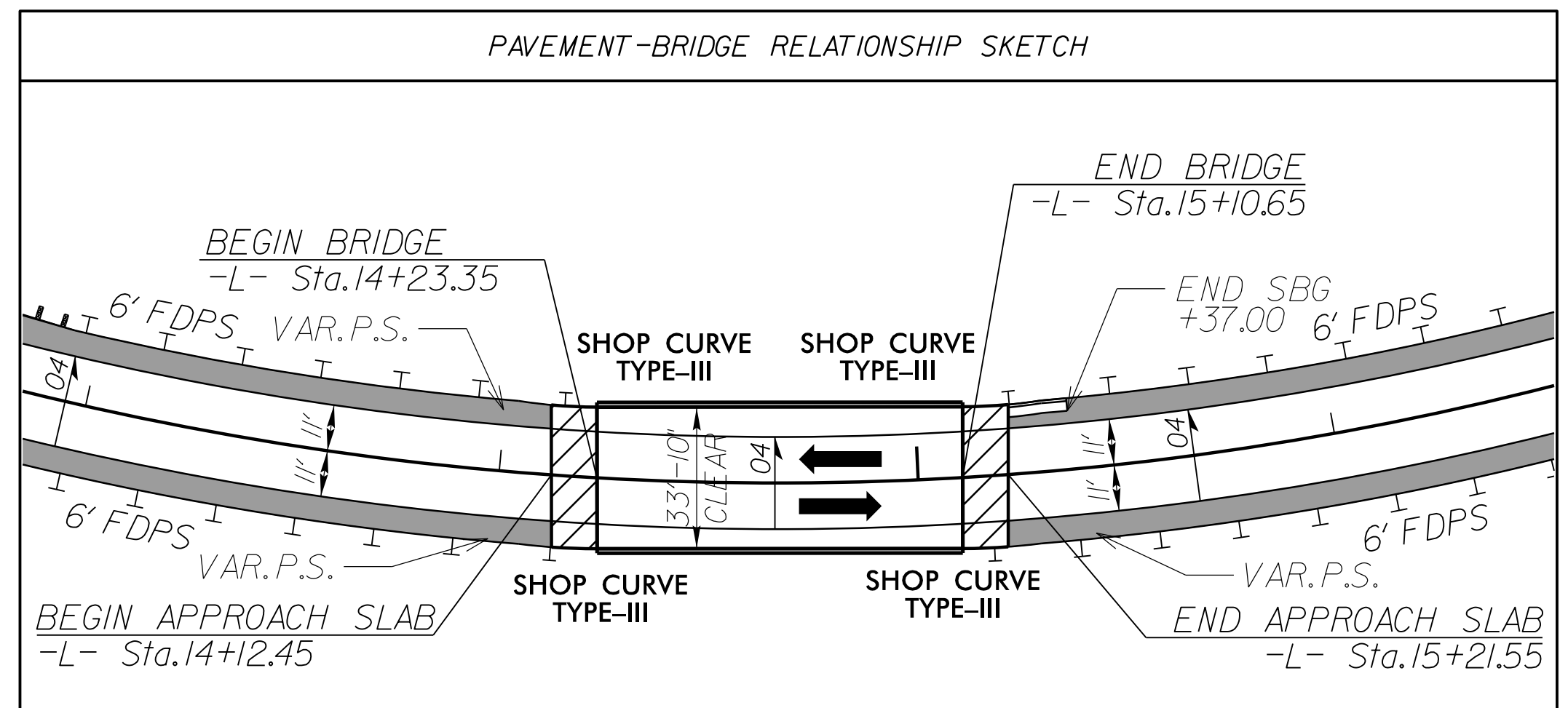
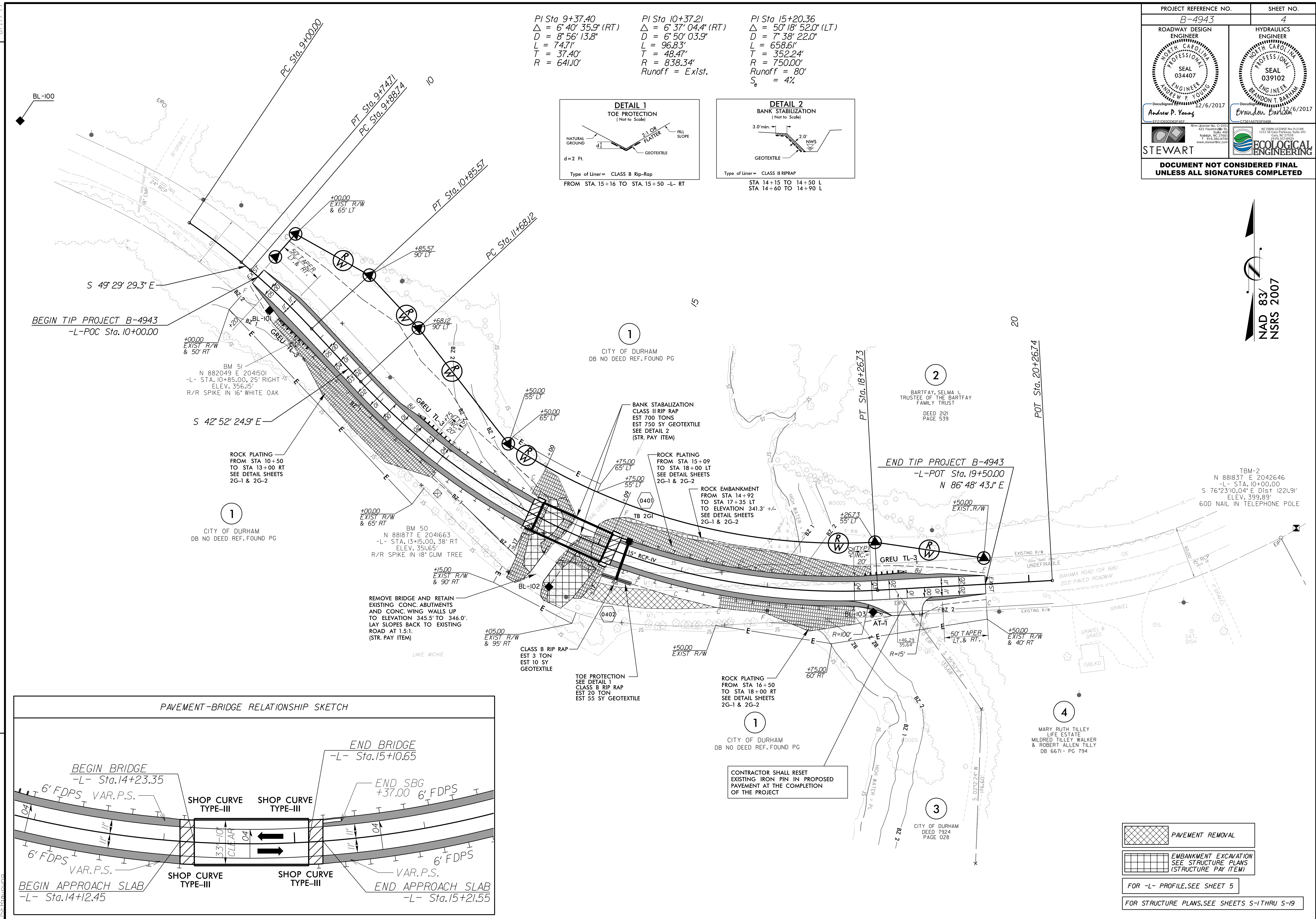
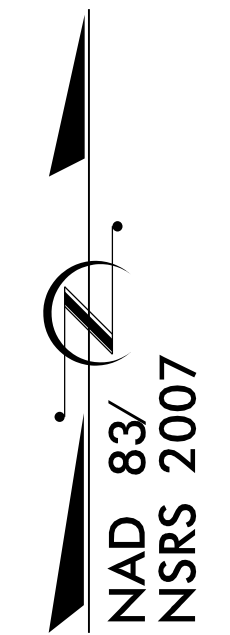
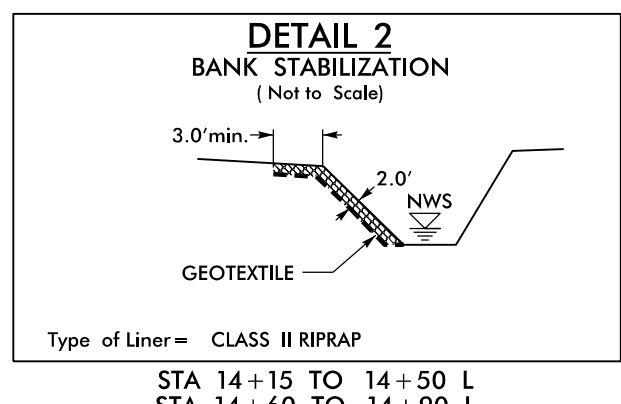
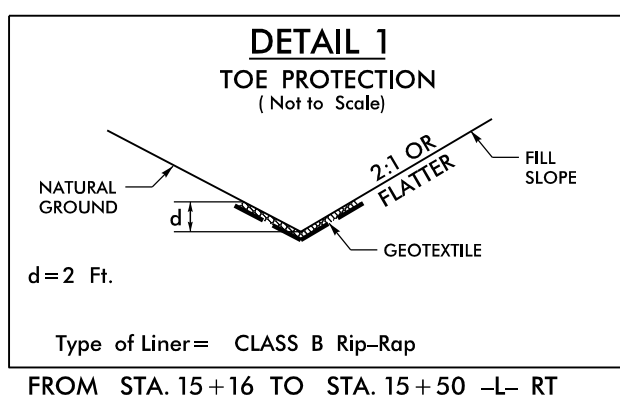


PROJECT REFERENCE NO. B-4943	SHEET NO. 4
ROADWAY DESIGN ENGINEER ANDREW P. YOUNG SEAL 034407 12/6/2017	HYDRAULICS ENGINEER BRANDON T. BASHAM SEAL 039102 12/6/2017
DOCUMENT NOT CONSIDERED FINAL UNLESS ALL SIGNATURES COMPLETED	

PI Sta 9+37.40 Δ = 6° 40' 35.9" (RT) D = 8' 56' 13.8" L = 74.71' T = 37.40' R = 641.0'
 PI Sta 10+37.21 Δ = 6° 37' 04.4" (RT) D = 6' 50' 03.9" L = 96.83' T = 48.47' R = 838.34' Runoff = Exist.
 PI Sta 15+20.36 Δ = 50° 18' 52.0" (LT) D = 7' 38' 22.0" L = 658.61' T = 352.24' R = 750.00' Runoff = 80' S_e = 4%



	PAVEMENT REMOVAL
	EMBANKMENT EXCAVATION SEE STRUCTURE PLANS (STRUCTURE PAY ITEM)
FOR -L- PROFILE, SEE SHEET 5	
FOR STRUCTURE PLANS, SEE SHEETS S-1 THRU S-19	

REVISIONS

12/6/2017 12:48:43 PM B:\4943_PDX_PSH04.dgn
 8/17/99