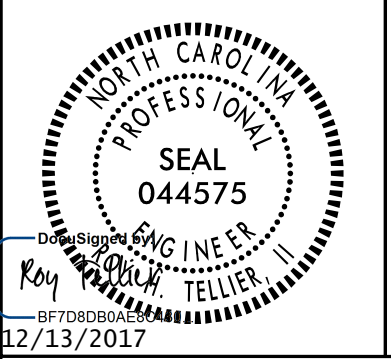
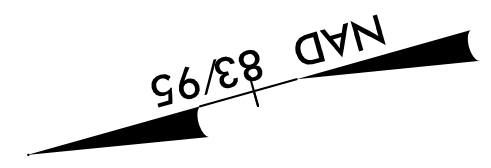
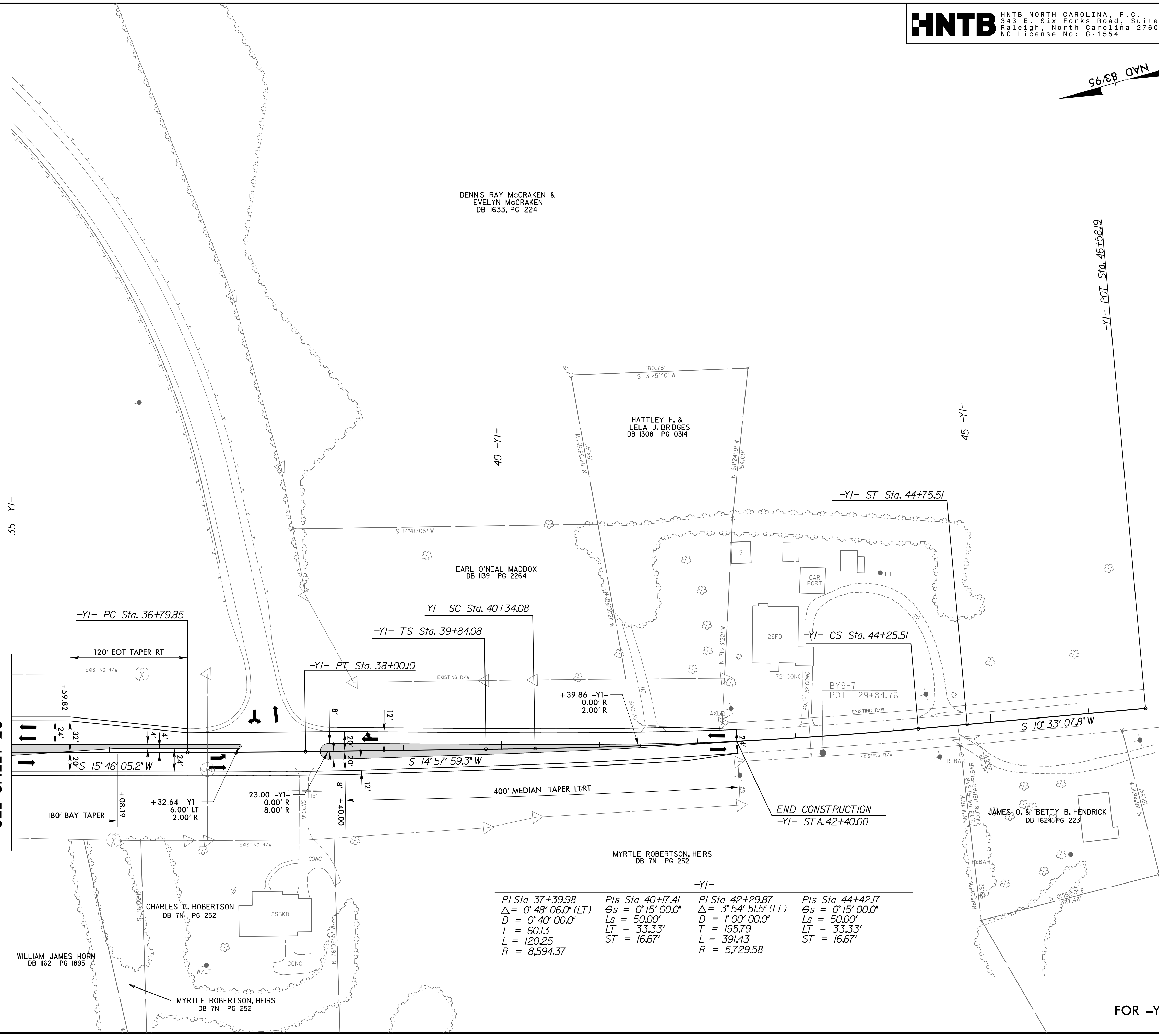


PROJECT REFERENCE NO. R-2707F	SHEET NO. 30
ROADWAY DESIGN ENGINEER	HYDRAULICS ENGINEER
	
DOCUMENT NOT CONSIDERED FINAL UNLESS ALL SIGNATURES COMPLETED	



REVISIONS

MATCH LINE -YI- STA 35+00
SEE SHEET 26



DENNIS RAY McCRAKEN &
EVELYN McCRAKEN
DB 1633, PG 224

HATTLEY H. &
LELA J. BRIDGES
DB 1308 PG 0314

EARL O'NEAL MADDOX
DB 1139 PG 2264

MYRTLE ROBERTSON, HEIRS
DB 7N PG 252

CHARLES C. ROBERTSON
DB 7N PG 252

WILLIAM JAMES HORN
DB 1162 PG 1895

JAMES O. & BETTY B. HENDRICK
DB 1624 PG 2231

JAMES O. & BETTY B. HENDRICK
DB 1277 PG 0954

-YI- PI Sta 37+39.98 $\Delta = 0^{\circ} 48' 06.0''$ (LT) $D = 0^{\circ} 40' 00.0''$ $T = 60.13$ $L = 120.25$ $R = 8,594.37$	-YI- PIs Sta 40+17.41 $\Theta_s = 0^{\circ} 15' 00.0''$ $L_s = 50.00'$ $LT = 33.33'$ $ST = 16.67'$	-YI- PI Sta 42+29.87 $\Delta = 3^{\circ} 54' 51.5''$ (LT) $D = 1^{\circ} 00' 00.0''$ $T = 195.79$ $L = 391.43$ $R = 5,729.58$	-YI- PIs Sta 44+42.17 $\Theta_s = 0^{\circ} 15' 00.0''$ $L_s = 50.00'$ $LT = 33.33'$ $ST = 16.67'$
--	---	---	---

FOR -YI- PROFILE, SEE SHEETS 50 & 51

8/17/99

08-DEC-2017 13:48
N:\Roadway\Projects\2707F_rdy_psh\30.dgn
HNTB