

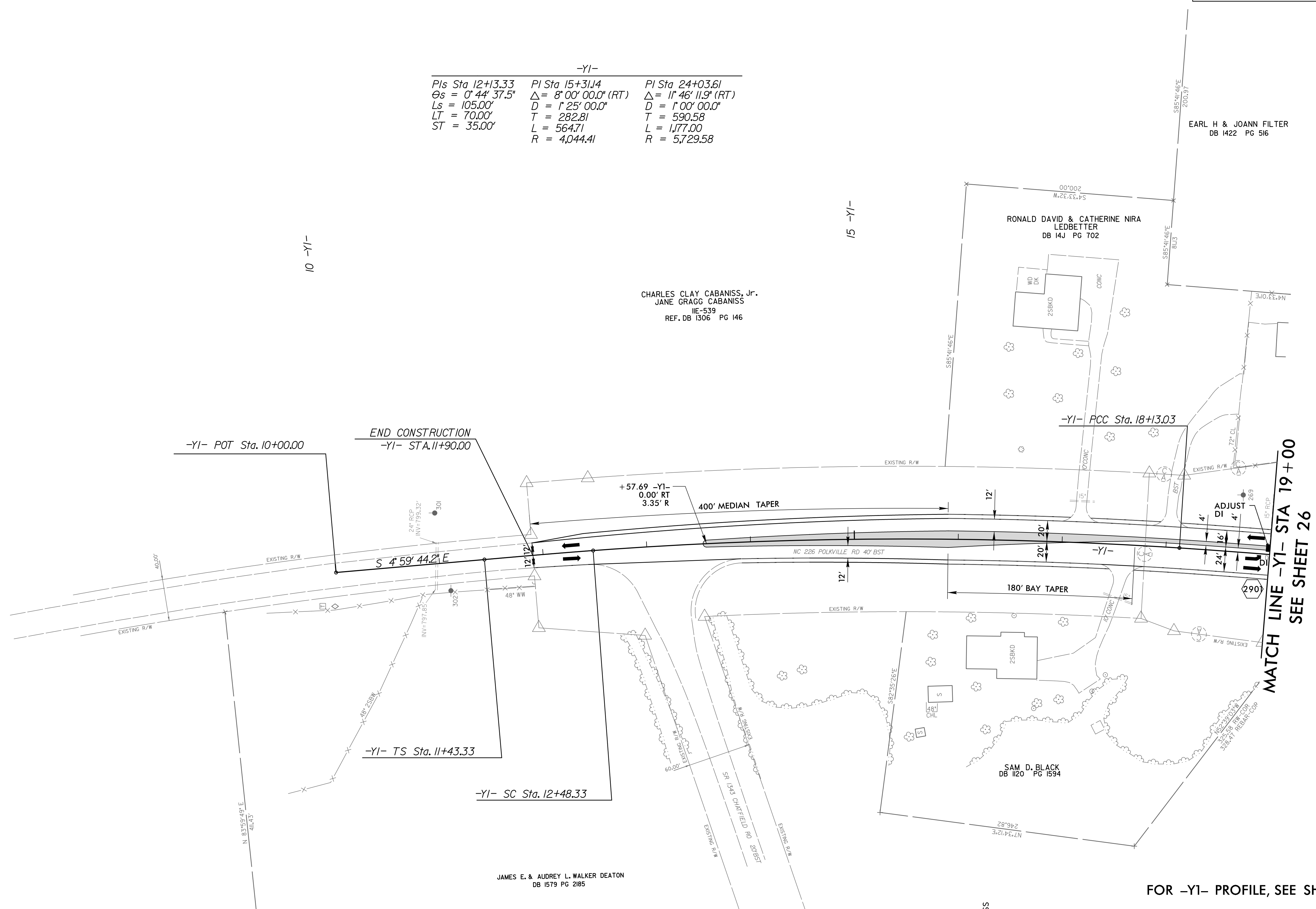
8/17/99

ROADWAY DESIGN ENGINEER	HYDRAULICS ENGINEER
<p>DOCUMENT NOT CONSIDERED FINAL UNLESS ALL SIGNATURES COMPLETED</p>	

NAD 83/95

-YI-		
PI Sta 12+13.33	PI Sta 15+31.14	PI Sta 24+03.61
$\Theta_s = 0^\circ 44' 37.5"$	$\Delta = 8^\circ 00' 00.0" (RT)$	$\Delta = 1^\circ 46' 11.9" (RT)$
$L_s = 105.00'$	$D = 1^\circ 25' 00.0"$	$D = 1^\circ 00' 00.0"$
$LT = 70.00'$	$T = 282.81$	$T = 590.58$
$ST = 35.00'$	$L = 564.71$	$L = 1,177.00$
	$R = 4,044.41$	$R = 5,729.58$

REVISIONS



08-DEC-2017 13:48
N:\oadway\Proj\R2707F_rdy_psh29.dgn
HNTB

JAMES E. & AUDREY L. WALKER DEATON
DB 1519 PG 2185

FOR -YI- PROFILE, SEE SHEET 50

MATCH LINE -YI- STA 19+00
SEE SHEET 26