

8/17/99

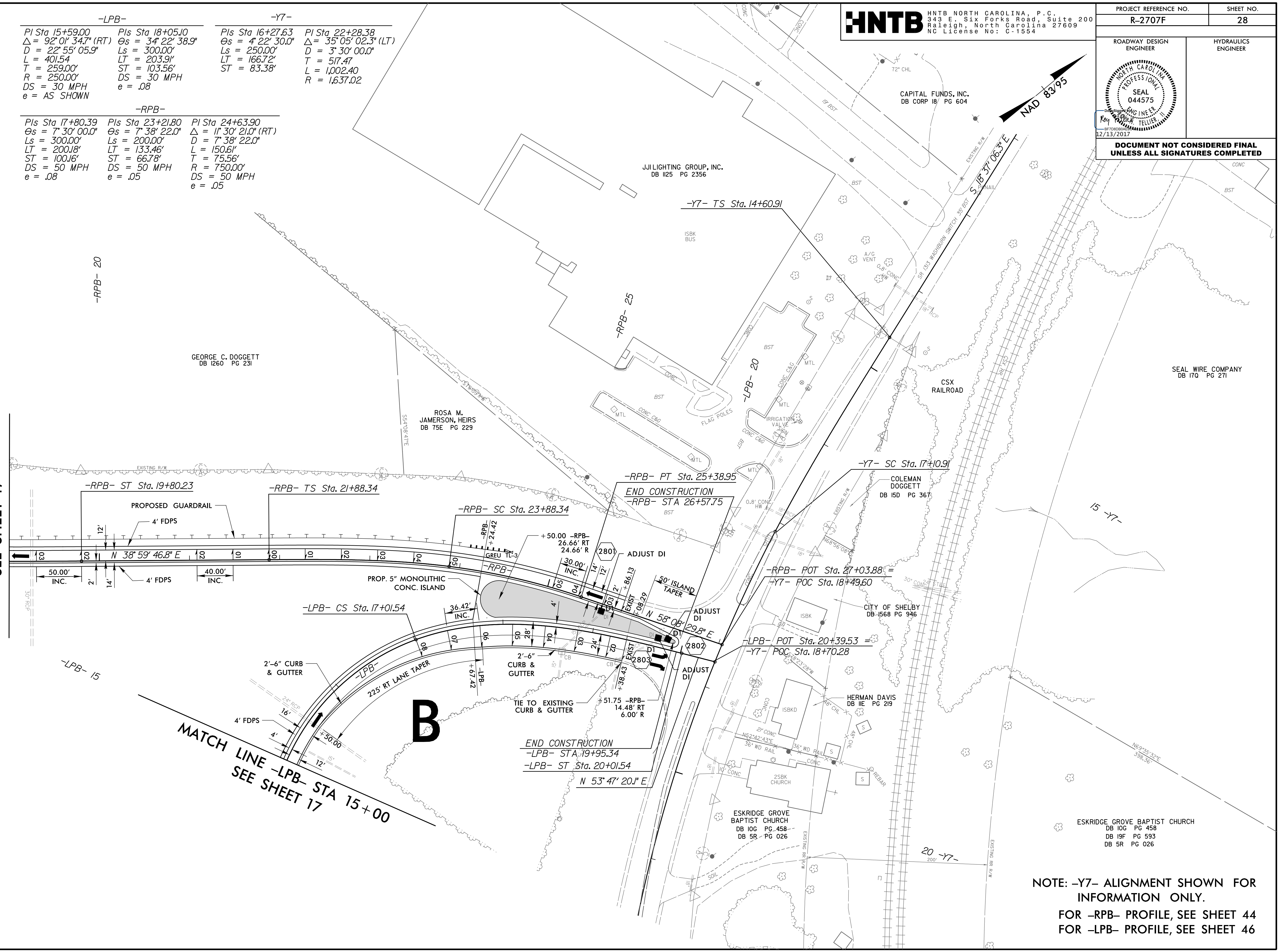
PROJECT REFERENCE NO. R-2707F	SHEET NO. 28
ROADWAY DESIGN ENGINEER	HYDRAULICS ENGINEER
DOCUMENT NOT CONSIDERED FINAL UNLESS ALL SIGNATURES COMPLETED	

-LPB-		-Y7-	
PI Sta 15+59.00 Δ = 92° 01' 34.7" (RT) D = 22° 55' 05.9" L = 401.54 T = 259.00' R = 250.00' DS = 30 MPH e = AS SHOWN	PIs Sta 18+05.10 Θs = 34° 22' 38.9" Ls = 300.00' LT = 203.91' ST = 103.56' DS = 30 MPH e = .08	PIs Sta 16+27.63 Θs = 4° 22' 30.0" Ls = 250.00' LT = 166.72' ST = 83.38'	PI Sta 22+28.38 Δ = 35° 05' 02.3" (LT) D = 3° 30' 00.0" T = 517.47 L = 1,002.40 R = 1,637.02
-RPB-			
PIs Sta 17+80.39 Θs = 7° 30' 00.0" Ls = 300.00' LT = 200.18' ST = 100.16' DS = 50 MPH e = .08	PIs Sta 23+21.80 Θs = 7° 38' 22.0" Ls = 200.00' LT = 133.46' ST = 66.78' DS = 50 MPH e = .05	PI Sta 24+63.90 Δ = 11° 30' 21.0" (RT) D = 7° 38' 22.0" L = 150.61' T = 75.56' R = 750.00' DS = 50 MPH e = .05	

REVISIONS

MATCH LINE -RPB- STA 19+00
SEE SHEET 17

MATCH LINE -LPB- STA 15+00
SEE SHEET 17



**NOTE: -Y7- ALIGNMENT SHOWN FOR
 INFORMATION ONLY.
 FOR -RPB- PROFILE, SEE SHEET 44
 FOR -LPB- PROFILE, SEE SHEET 46**

08-DEC-2017 13:48
 N:\Roadway\Projects\R2707F_rdy_psh28.dgn
 HNTB