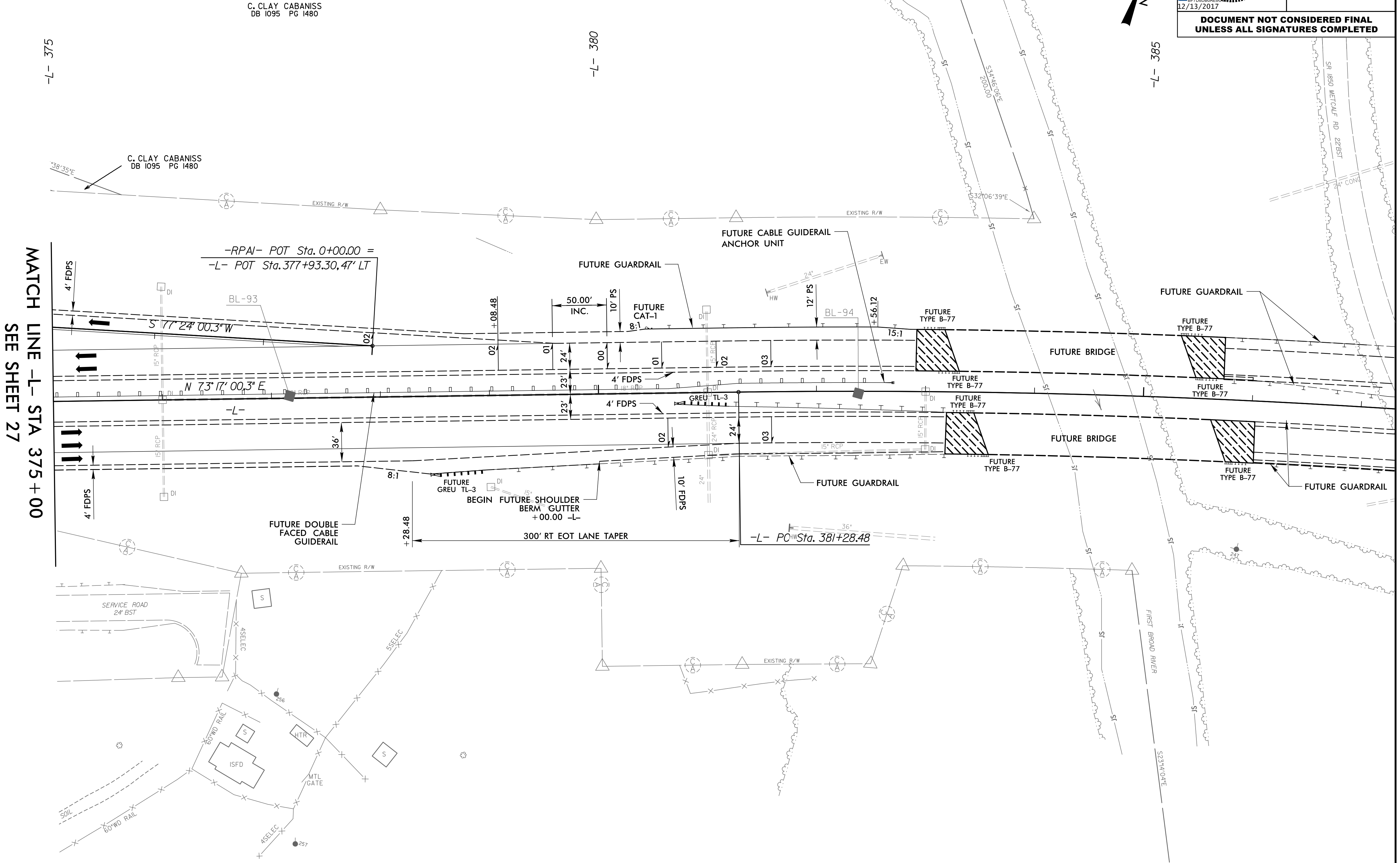
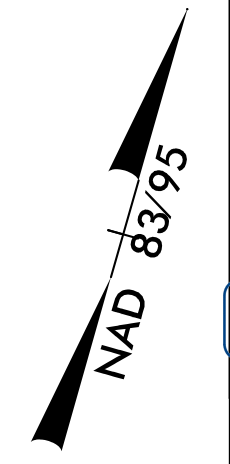


8/17/99

PROJECT REFERENCE NO. R-2707F	SHEET NO. 27
ROADWAY DESIGN ENGINEER	HYDRAULICS ENGINEER
DOCUMENT NOT CONSIDERED FINAL UNLESS ALL SIGNATURES COMPLETED	



MATCH LINE -L- STA 375 + 00
 SEE SHEET 27

REVISIONS

08-DEC-2017 13:48
 N:\Roadway\Projects\R2707F_rdy-psh27.dgn
 HNTB

-L-	-RPAI-	-RPDI-
PI Sta 387+19.11	PIs Sta 4+94.60	PIs Sta 1+60.04
$\Delta = 8^{\circ} 50' 30.4''$ (RT)	$\Theta_s = 3^{\circ} 46' 39.9''$	$\Theta_s = 3^{\circ} 46' 39.9''$
$D = 0^{\circ} 45' 00.0''$	$L_s = 240.00'$	$L_s = 240.00'$
$L = 1,178.90'$	$LT = 160.04'$	$LT = 160.04'$
$T = 590.62'$	$ST = 80.03'$	$ST = 80.03'$
$R = 7,639.44'$	$DS = 70$ MPH	$DS = 70$ MPH
$DS = 70$ MPH	$e = .08$	$e = .08$
$e = .03$		

CHARLES A. HORN
 DB 1162 PG 1697

FOR -L- PROFILE, SEE SHEET 42
 FOR -RPAI- PROFILE, SEE SHEET 47
 FOR -RPDI- PROFILE, SEE SHEET 49