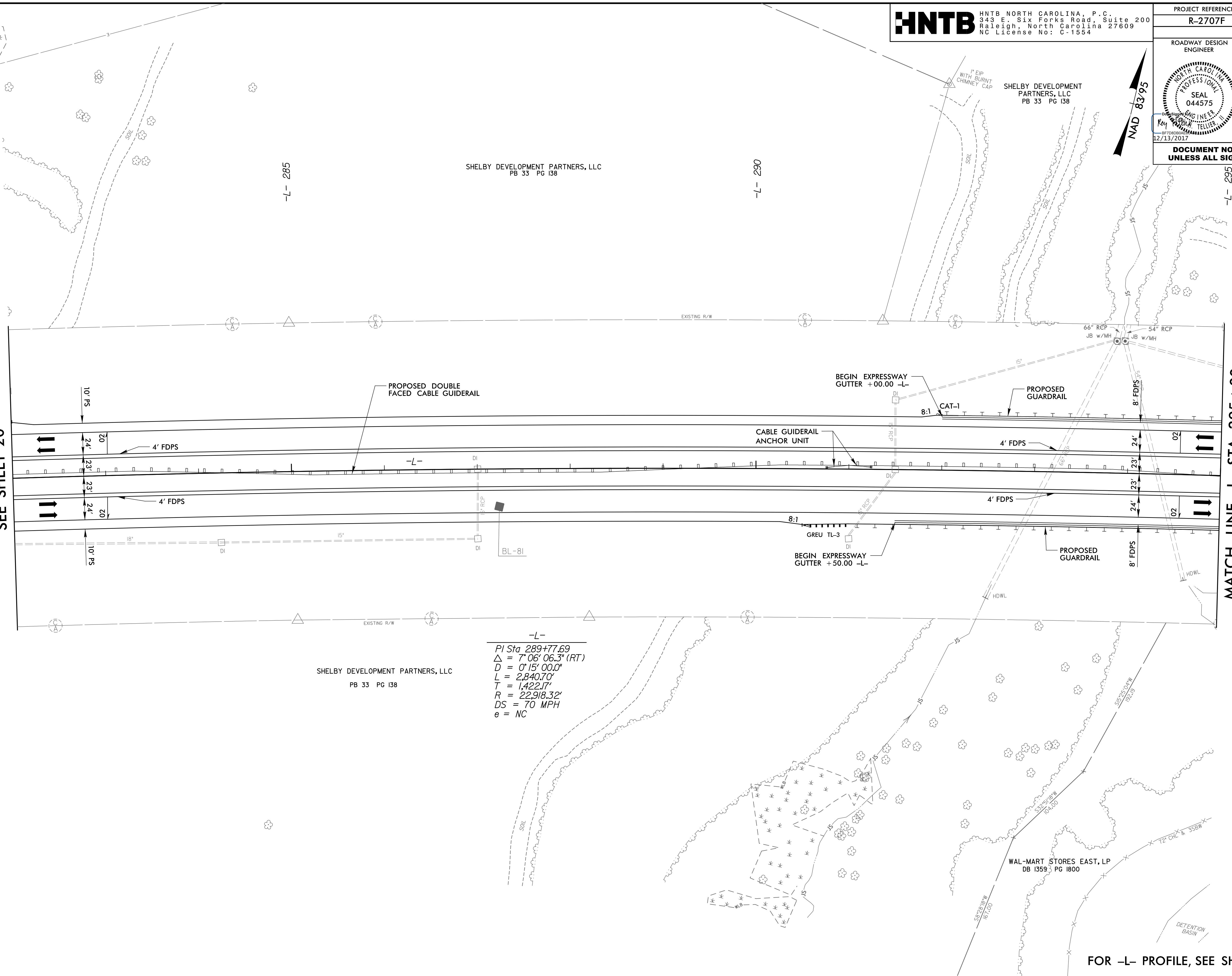


| | |
|-------------------------|---------------------|
| PROJECT REFERENCE NO. | SHEET NO. |
| R-2707F | 21 |
| ROADWAY DESIGN ENGINEER | HYDRAULICS ENGINEER |
| | |

**DOCUMENT NOT CONSIDERED FINAL
 UNLESS ALL SIGNATURES COMPLETED**

MATCH LINE -L- STA 282 + 00
SEE SHEET 20

MATCH LINE -L- STA 295 + 00
SEE SHEET 22



-L-
 PI Sta 289+77.69
 $\Delta = 7^{\circ} 06' 06.3''$ (RT)
 $D = 0^{\circ} 15' 00.0''$
 $L = 2,840.70'$
 $T = 1,422.17'$
 $R = 22,918.32'$
 $DS = 70$ MPH
 $e = NC$

SHELBY DEVELOPMENT PARTNERS, LLC
 PB 33 PG 138

WAL-MART STORES EAST, LP
 DB 1359 PG 1800

DETECTION BASIN

FOR -L- PROFILE, SEE SHEETS 38 & 39

REVISIONS

8/17/99

08-DEC-2017 13:48
 (P:\oadway\Proj\R2707F_rdy_psh21.dgn
 HNTB