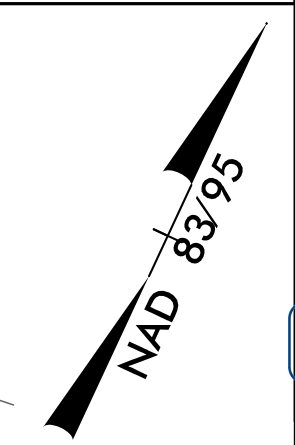


8/17/99

HNTB HNTB NORTH CAROLINA, P.C.
343 E. SIX FORKS ROAD, SUITE 200
RALEIGH, NORTH CAROLINA 27609
NC LICENSE NO: C-1554

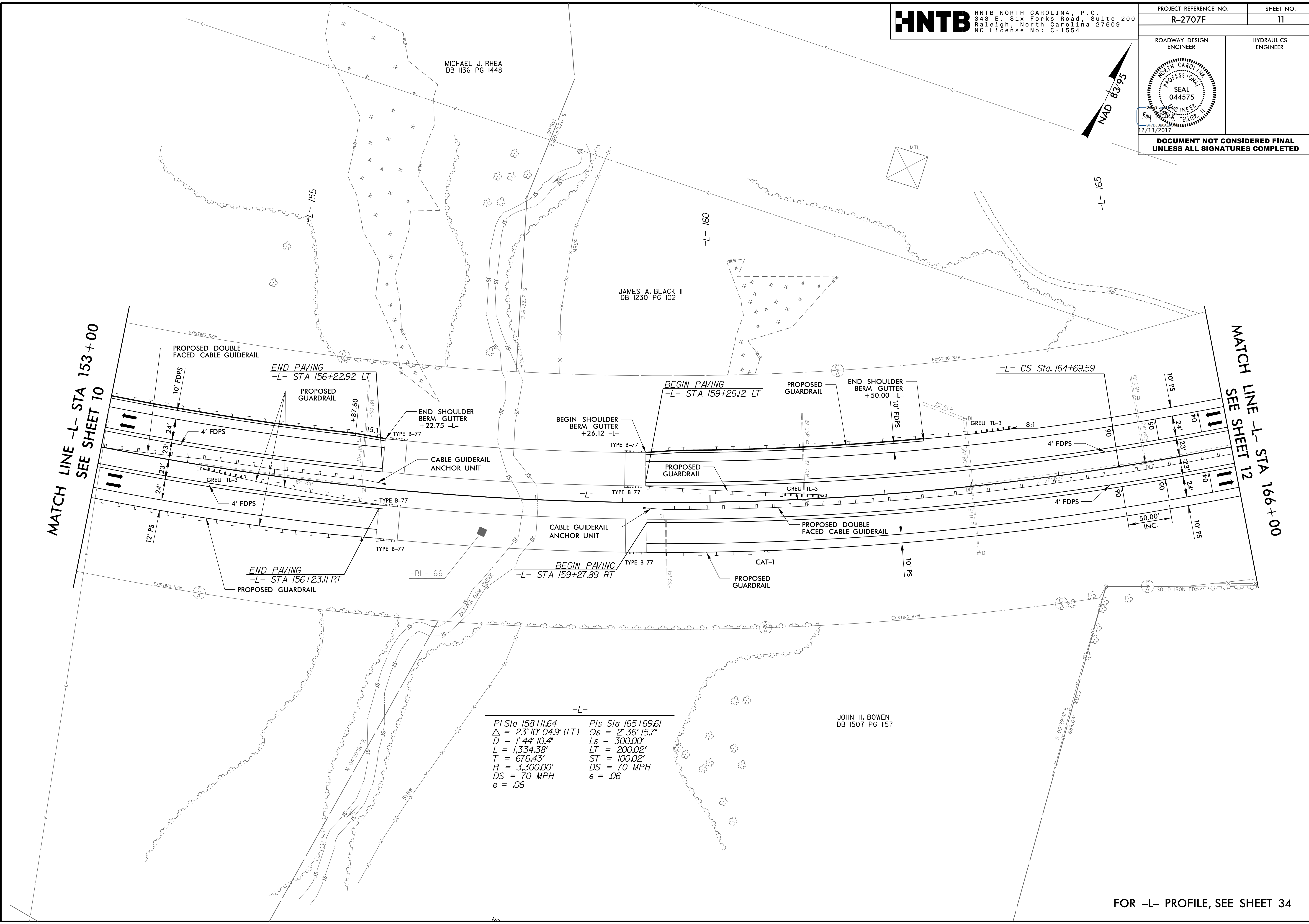
PROJECT REFERENCE NO. R-2707F	SHEET NO. 11
ROADWAY DESIGN ENGINEER	HYDRAULICS ENGINEER
DOCUMENT NOT CONSIDERED FINAL UNLESS ALL SIGNATURES COMPLETED	



REVISIONS

MATCH LINE -L- STA 153+00
SEE SHEET 10

MATCH LINE -L- STA 166+00
SEE SHEET 12



MICHAEL J. RHEA
DB 1136 PG 1448

JAMES A. BLACK II
DB 1230 PG 102

JOHN H. BOWEN
DB 1507 PG 1157

-L-

PI Sta 158+11.64	PIs Sta 165+69.61
$\Delta = 23^{\circ} 10' 04.9''$ (LT)	$\Theta_s = 2^{\circ} 36' 15.7''$
$D = 1^{\circ} 44' 10.4''$	$L_s = 300.00'$
$L = 1,334.38'$	$LT = 200.02'$
$T = 676.43'$	$ST = 100.02'$
$R = 3,300.00'$	$DS = 70$ MPH
$DS = 70$ MPH	$e = .06$
$e = .06$	

08-DEC-2017 13:48
\\p01adway\p01\proj\R2707F_rdy_psh11.dgn
HNTB

FOR -L- PROFILE, SEE SHEET 34