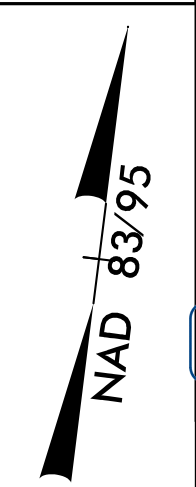


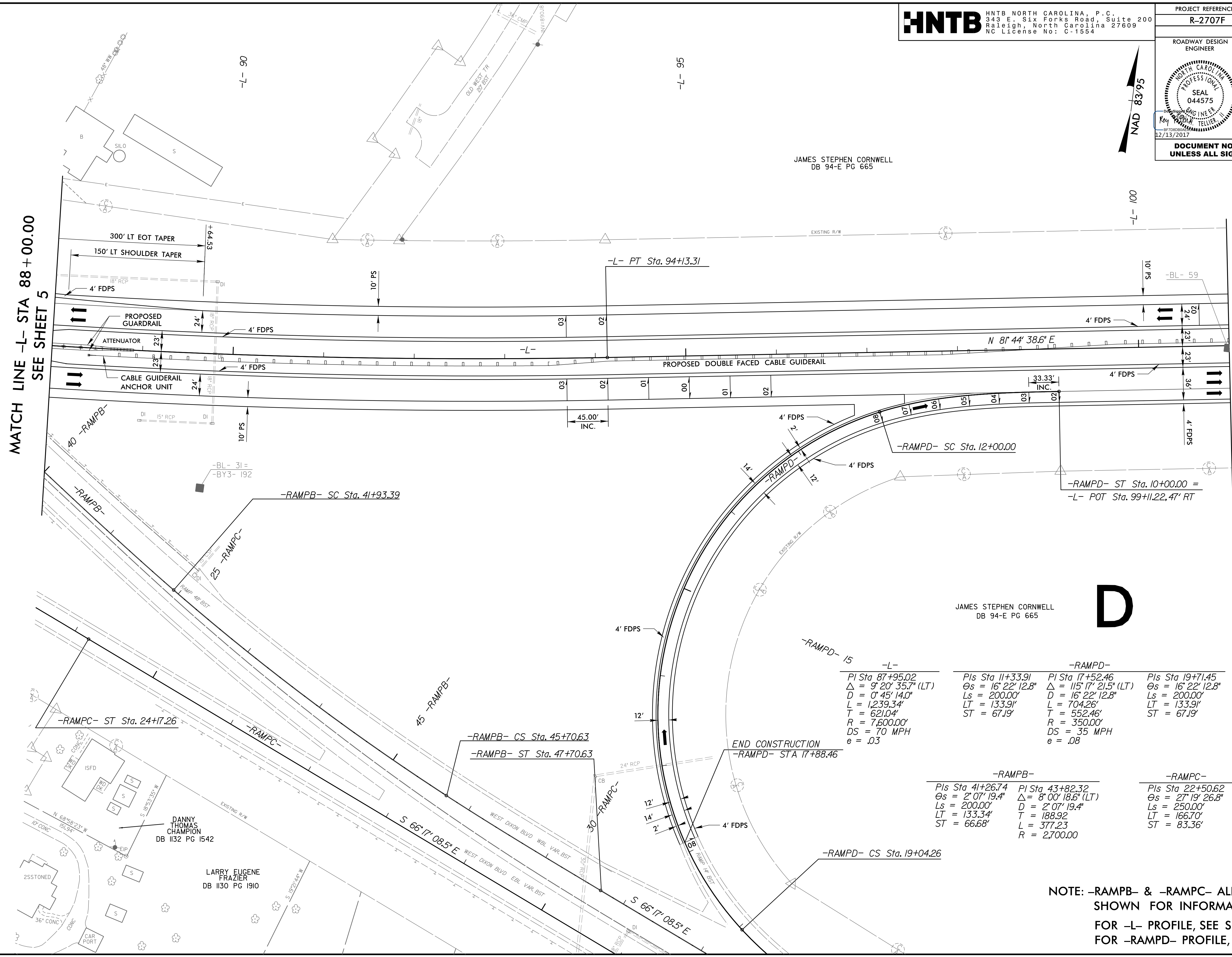
JAMES STEPHEN CORNWELL
DB 94-E PG 665



MATCH LINE -L- STA 88+00.00
SEE SHEET 5

MATCH LINE -L- STA 101+00
SEE SHEET 7

REVISIONS



JAMES STEPHEN CORNWELL
DB 94-E PG 665

D

<p>-L-</p> <p>PI Sta 87+95.02 $\Delta = 9' 20' 35.7''$ (LT) $D = 0' 45' 14.0''$ $L = 1,239.34'$ $T = 621.04'$ $R = 7,600.00'$ $DS = 70$ MPH $e = .03$</p>	<p>-RAMPD-</p> <p>PIs Sta 11+33.91 $\Theta_s = 16' 22' 12.8''$ $L_s = 200.00'$ $LT = 133.91'$ $ST = 67.19'$</p>	<p>-RAMPD-</p> <p>PI Sta 17+52.46 $\Delta = 115' 17' 21.5''$ (LT) $D = 16' 22' 12.8''$ $L = 704.26'$ $T = 552.46'$ $R = 350.00'$ $DS = 35$ MPH $e = .08$</p>	<p>-RAMPD-</p> <p>PIs Sta 19+71.45 $\Theta_s = 16' 22' 12.8''$ $L_s = 200.00'$ $LT = 133.91'$ $ST = 67.19'$</p>
<p>-RAMPB-</p> <p>PIs Sta 41+26.74 $\Theta_s = 2' 07' 19.4''$ $L_s = 200.00'$ $LT = 133.34'$ $ST = 66.68'$</p>	<p>-RAMPB-</p> <p>PI Sta 43+82.32 $\Delta = 8' 00' 18.6''$ (LT) $D = 2' 07' 19.4''$ $T = 188.92'$ $L = 377.23'$ $R = 2,700.00$</p>	<p>-RAMPB-</p> <p>PIs Sta 22+50.62 $\Theta_s = 27' 19' 26.8''$ $L_s = 250.00'$ $LT = 166.70'$ $ST = 83.36'$</p>	

NOTE: -RAMPB- & -RAMPD- ALIGNMENTS SHOWN FOR INFORMATION ONLY.
 FOR -L- PROFILE, SEE SHEETS 31 & 32
 FOR -RAMPD- PROFILE, SEE SHEET 43

08-DEC-2017 13:48
 (Roadway) (P=0) R2707F_rdy_psh6.dgn
 HNTB

DANNY THOMAS CHAMPION
 DB 1132 PG 1542

LARRY EUGENE FRAZIER
 DB 1130 PG 1910