

PROJECT REFERENCE NO. R-2707F	SHEET NO. 4
ROADWAY DESIGN ENGINEER	HYDRAULICS ENGINEER
DOCUMENT NOT CONSIDERED FINAL UNLESS ALL SIGNATURES COMPLETED	

BEGIN TIP PROJECT R-2707F
-L- POT STA. 66+60.00
BEGIN CONSTRUCTION
BEGIN PAVING WBL

JAMES STEPHEN CORNWELL
 DB 94-E PG 665

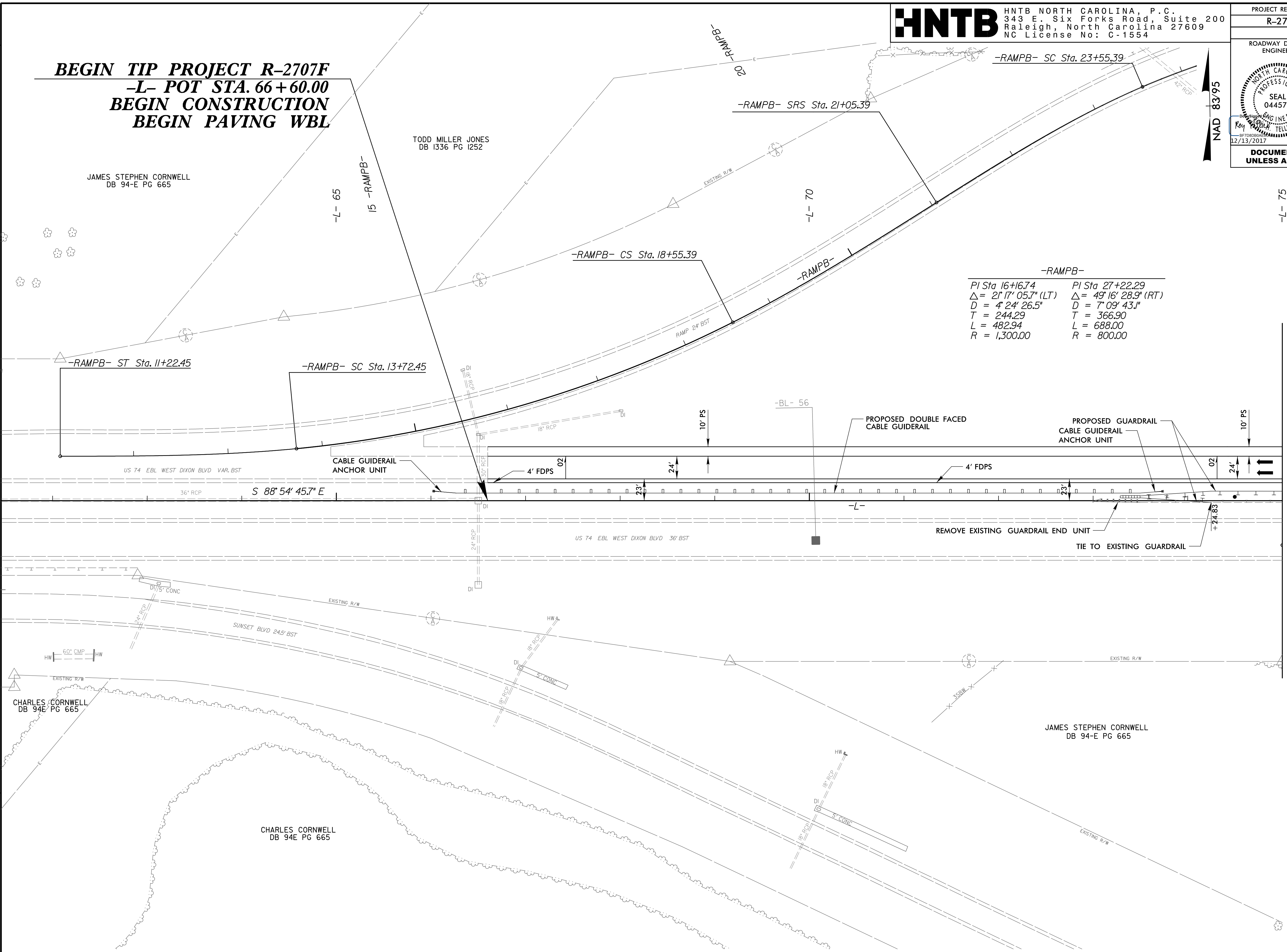
TODD MILLER JONES
 DB 1336 PG 1252

NAD 83/95

-RAMPB-	
PI Sta 16+16.74	PI Sta 27+22.29
$\Delta = 21^{\circ} 17' 05.7''$ (LT)	$\Delta = 49^{\circ} 16' 28.9''$ (RT)
$D = 4^{\circ} 24' 26.5''$	$D = 7^{\circ} 09' 43.1''$
$T = 244.29$	$T = 366.90$
$L = 482.94$	$L = 688.00$
$R = 1,300.00$	$R = 800.00$

REVISIONS

MATCH LINE -L- STA 75+00.00
SEE SHEET 5



NOTE: -RAMPB- ALIGNMENT SHOWN FOR INFORMATION ONLY.

FOR -L- PROFILE, SEE SHEET 31

08-DEC-2017 13:41
 (\\gadmway\p\proj\R2707F_rdy_psh4.dgn
 HNTB