

### AS-BUILT REPAIR QUANTITY TABLE

REPAIRS TO BEAMS	QUANTITIES					
	ESTIMATE			ACTUAL		
	LBS.	LBS.	LBS.	LBS.	LBS.	LBS.
BEAM PLATED REPAIR	SPAN A	SPAN B	SPAN C	SPAN A	SPAN B	SPAN C
BEAM 1	500	500	500			
BEAM 8	500	500	500			

**NOTES:**  
 REPAIR LOCATIONS AND ESTIMATED QUANTITIES ARE GIVEN WITH THE BEST INFORMATION AVAILABLE. IF ADDITIONAL REPAIRS NOT SHOWN ON THE DRAWINGS ARE DEEMED NECESSARY BY THE ENGINEER, THE ENGINEER WILL NOTE ON THE DRAWINGS THE APPROXIMATE LOCATIONS AND DESCRIPTION OF THE REPAIRS AND ADJUST THE ACTUAL QUANTITIES ENTERED INTO THE AS-BUILT REPAIR QUANTITY TABLE.

\* FINAL REPAIR QUANTITIES WILL BE DETERMINED AFTER THE STONE VENEER IS REMOVED. QUANTITIES SHOWN IN TABLE ARE TOKEN PAY ITEMS FOR PRICING PURPOSES IN CASE DAMAGED AREAS ARE ENCOUNTERED.

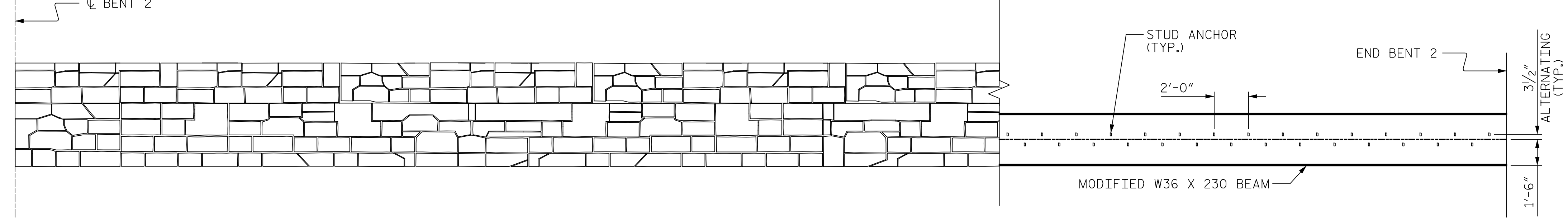
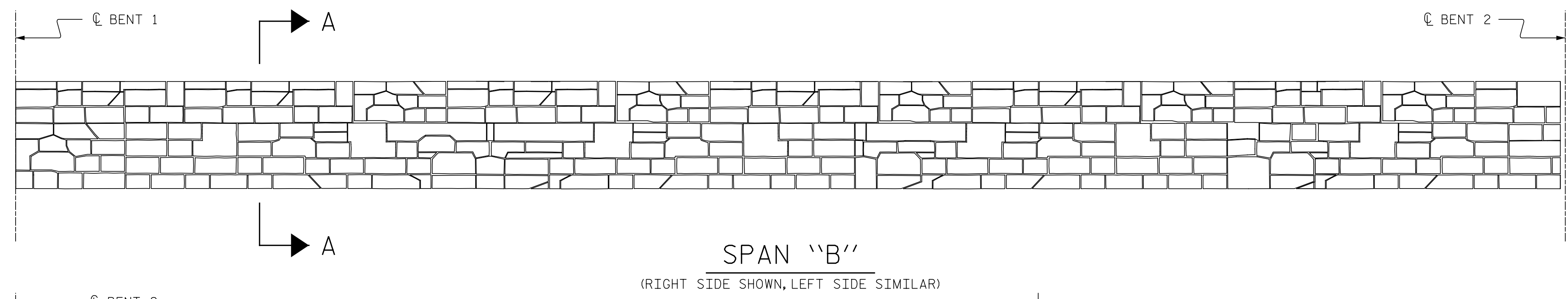
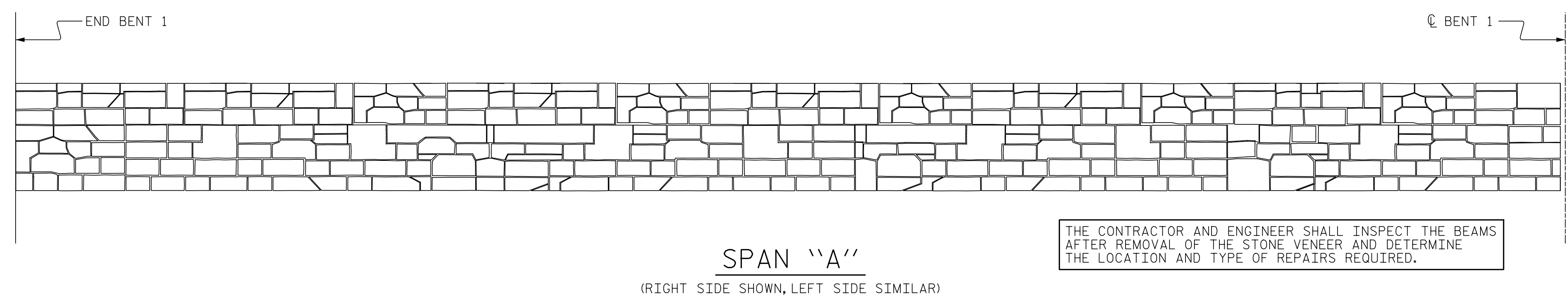
COMPLETE BEAM REPAIRS, BEARING REPLACEMENTS, LMC-VES OVERLAY, SHOTCRETE REPAIRS AND REPAINTING OF STRUCTURE PRIOR TO RE-INSTALLING VENEER.

FOR INSTALLATION OF VENEER ON OUTSIDE EDGE OF DECK AND PARAPET, SEE STONE VENEER BENT DETAILS

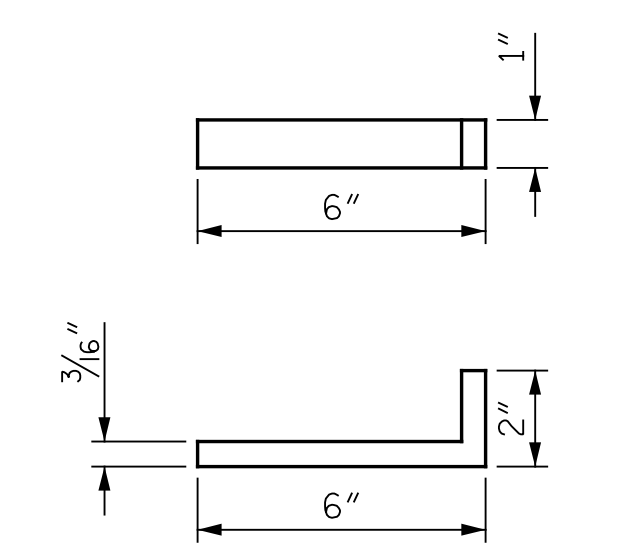
FOR ANCHORED STONE VENEER, SEE SPECIAL PROVISIONS.

FOR PAINTING EXISTING STRUCTURE, SEE SPECIAL PROVISIONS.

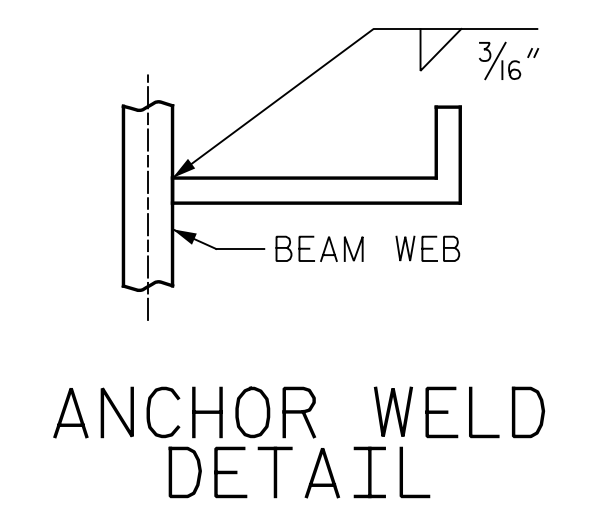
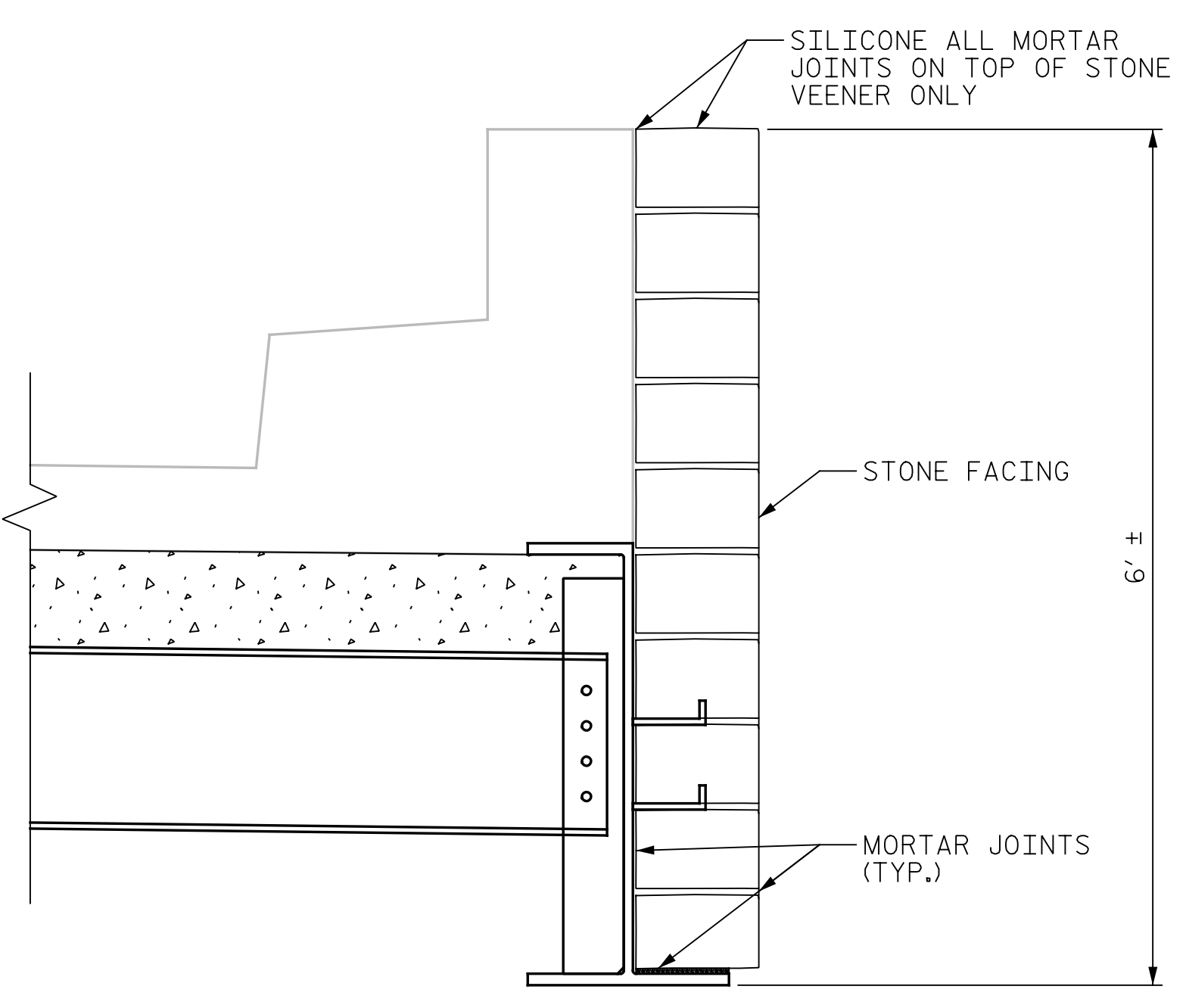
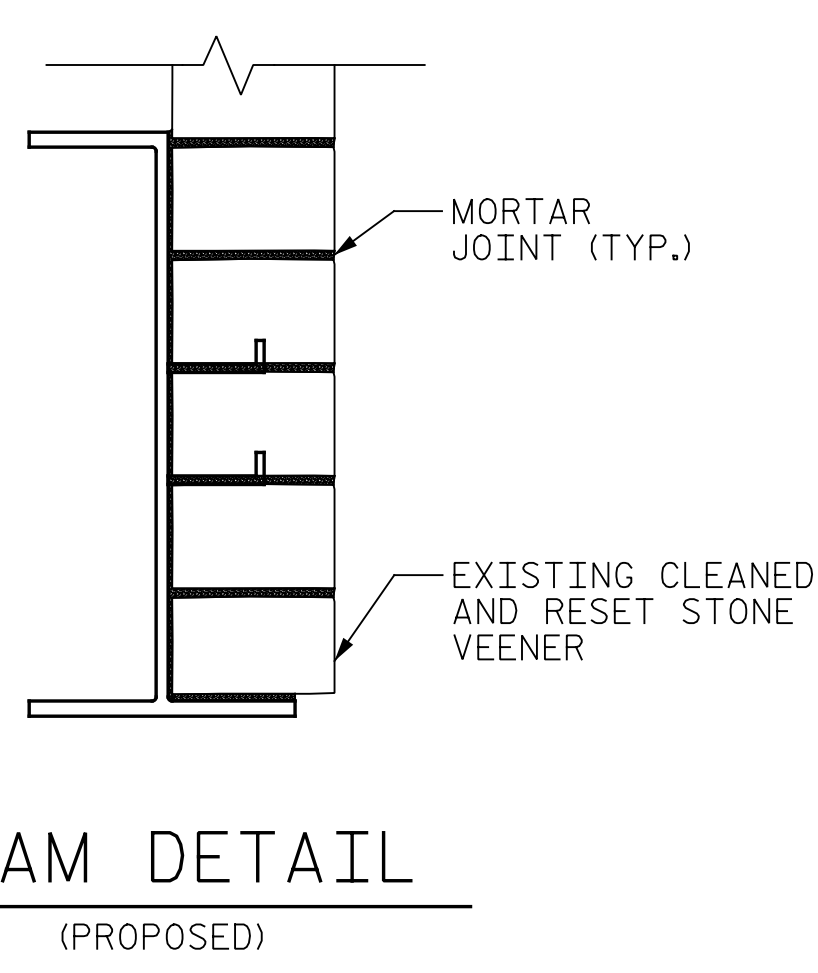
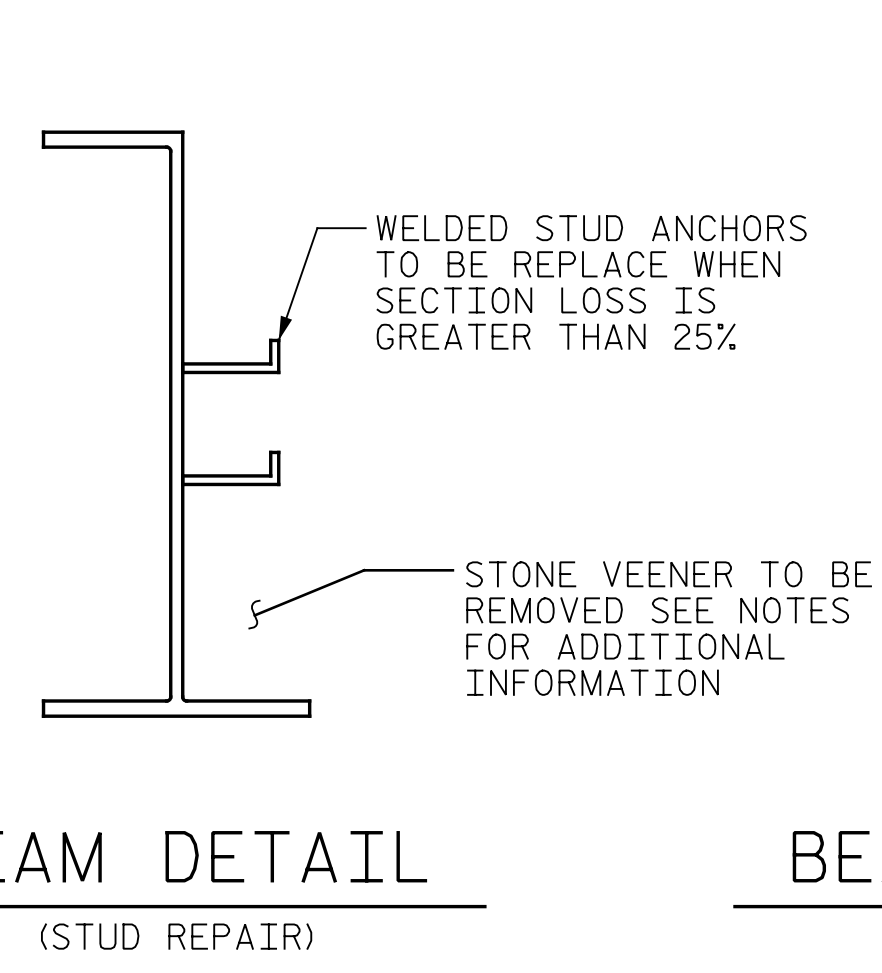
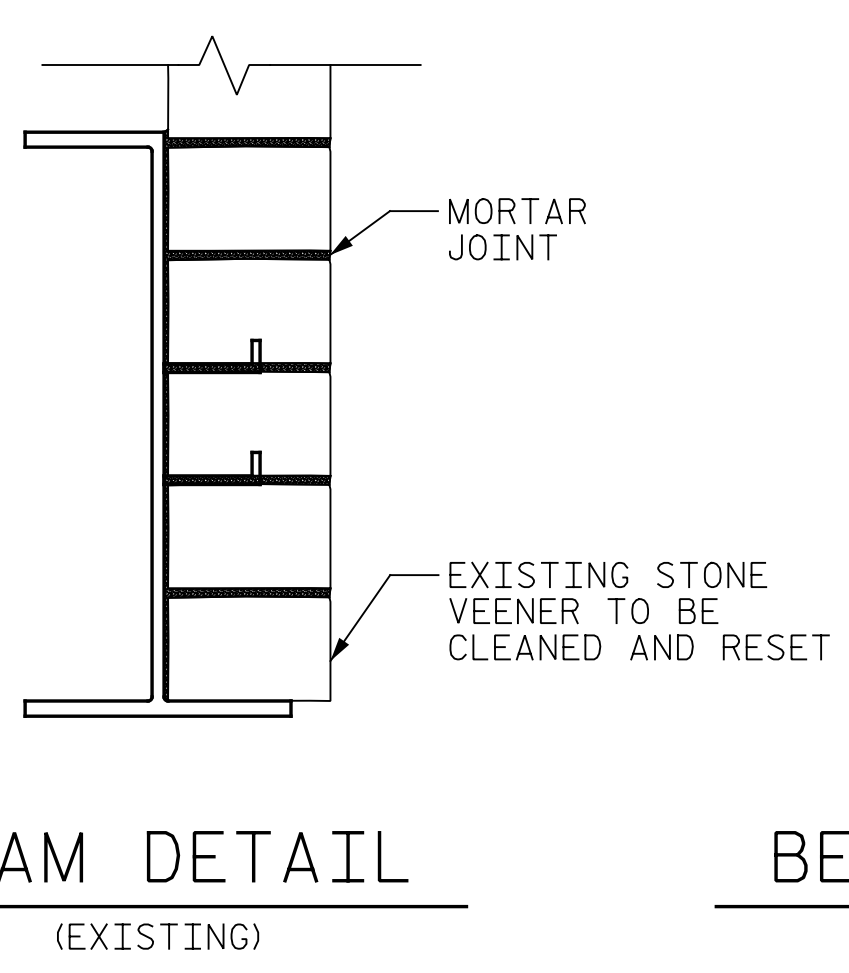
FOR BEAM REPAIRS, SEE SPECIAL PROVISIONS.



QUANTITY TABLE	
ANCHORED VENEER	SF
LEFT SIDE	1512
RIGHT SIDE	1512



STUD ANCHOR



PROJECT NO. I-5889A  
BUNCOMBE COUNTY  
 PROJECT NO. 378



STATE OF NORTH CAROLINA  
 DEPARTMENT OF TRANSPORTATION  
 RALEIGH

## STONE VENEER BEAM DETAILS

DRAWN BY : M.A.LEE DATE : 10/2017  
 CHECKED BY : R.NELSON DATE : 10/2017

PLANS PREPARED BY:  
**Gannett Fleming**  
 Excellence Delivered As Promised

2610 Wycliff Road  
 Suite 102  
 Raleigh, NC 27607-3073  
 (919) 420-7660  
 NC Lic. No. F-0270

DOCUMENT NOT CONSIDERED  
 FINAL UNLESS ALL  
 SIGNATURES COMPLETED

REVISIONS						SHEET NO.
NO.	BY:	DATE:	NO.	BY:	DATE:	S-200
1			3			TOTAL SHEETS
2			4			208